

1035 ROBERTSON ST.
FORT COLLINS, CO 80524



Building Size

2,162 SF

*Includes garden level
approx.*

Lease Rate

\$11.00 / SF NNN

NNN Rate

\$5.61 / SF

utilities not included

PROFESSIONAL MEDICAL OFFICE BUILDING LOCATED IN A DEDICATED MEDICAL OFFICE PARK

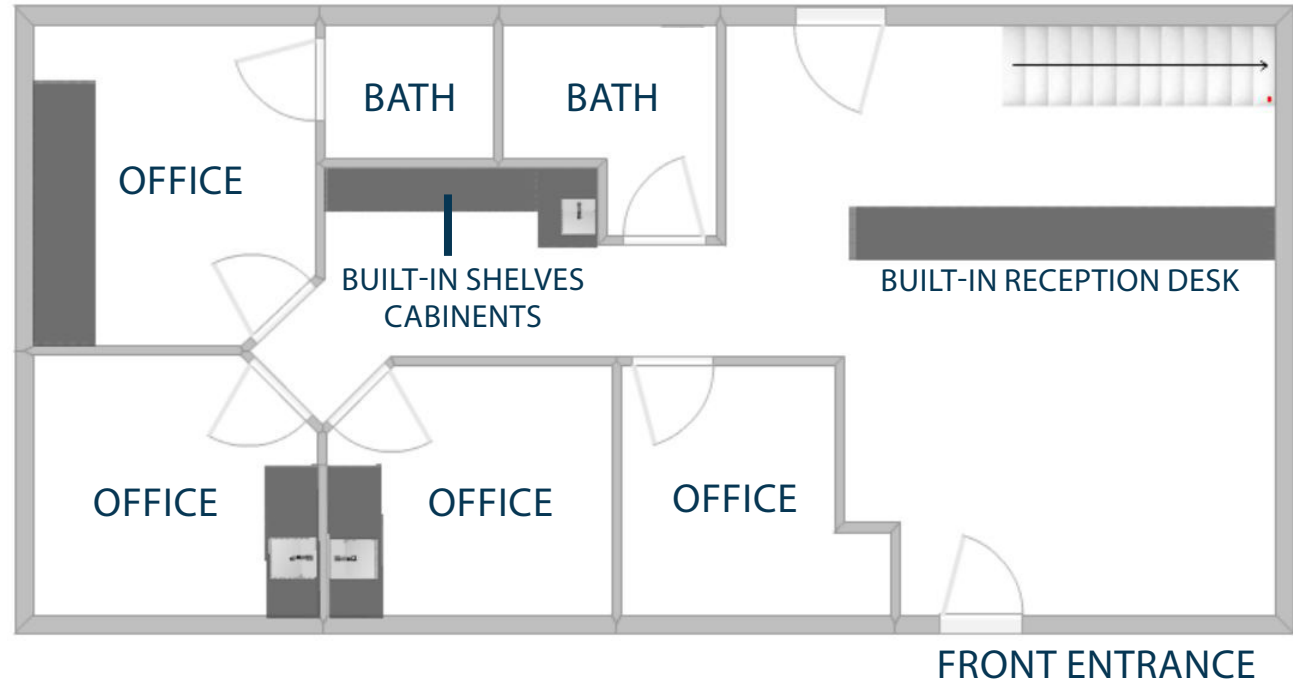
- Stand-alone Medical Office with Mature Landscaping
- Conveniently Located Next to Poudre Valley Hospital and The Women's' Clinic of Northern Colorado
- Fully Finished Garden Level Space with Dedicated Entrance
- Building Signage Available per Association Guidelines
- Plumbed Exams Rooms



Property Photos



FLOOR PLAN - FIRST FLOOR



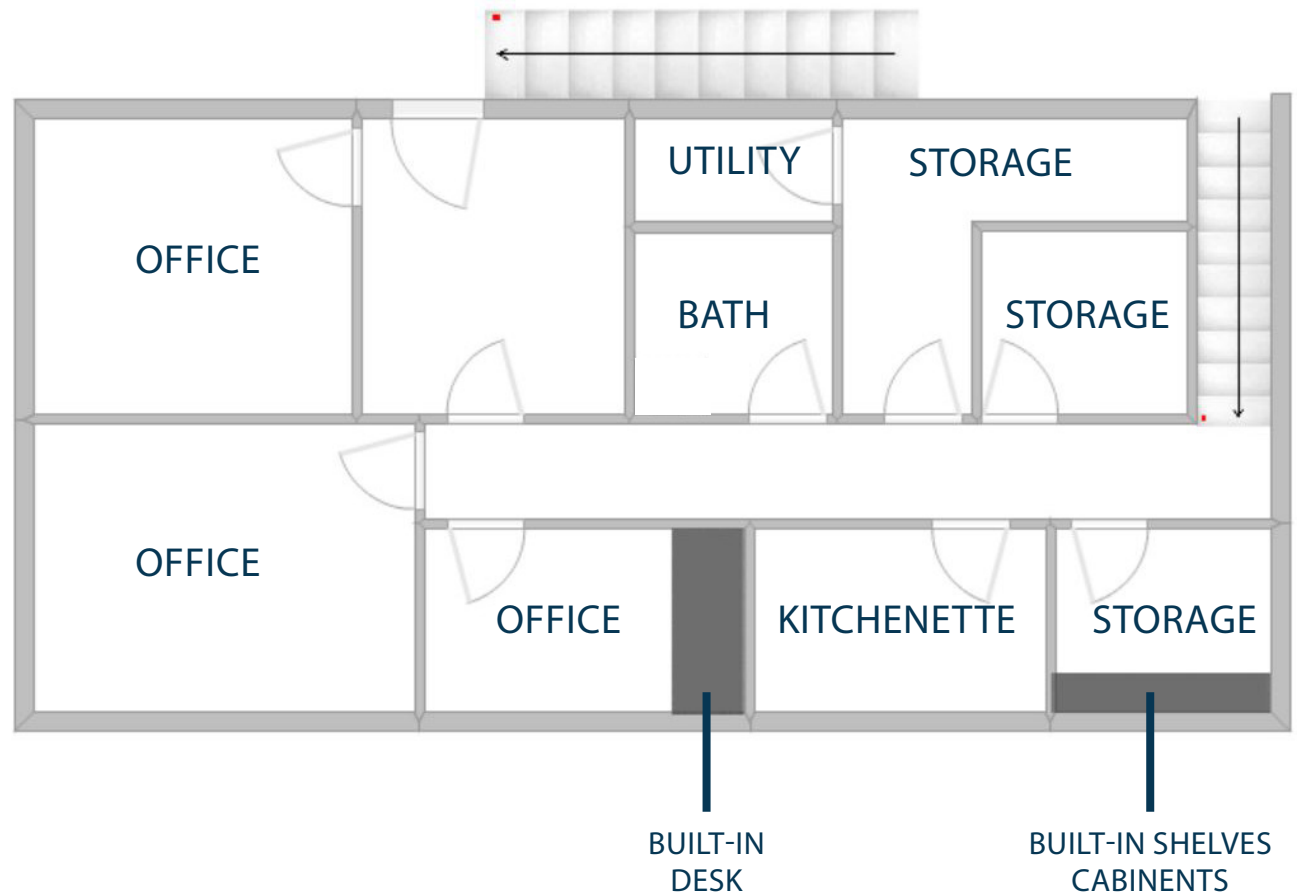
**All square footage measurements are approximate and contingent upon final demising plan/measure*



Property Photos



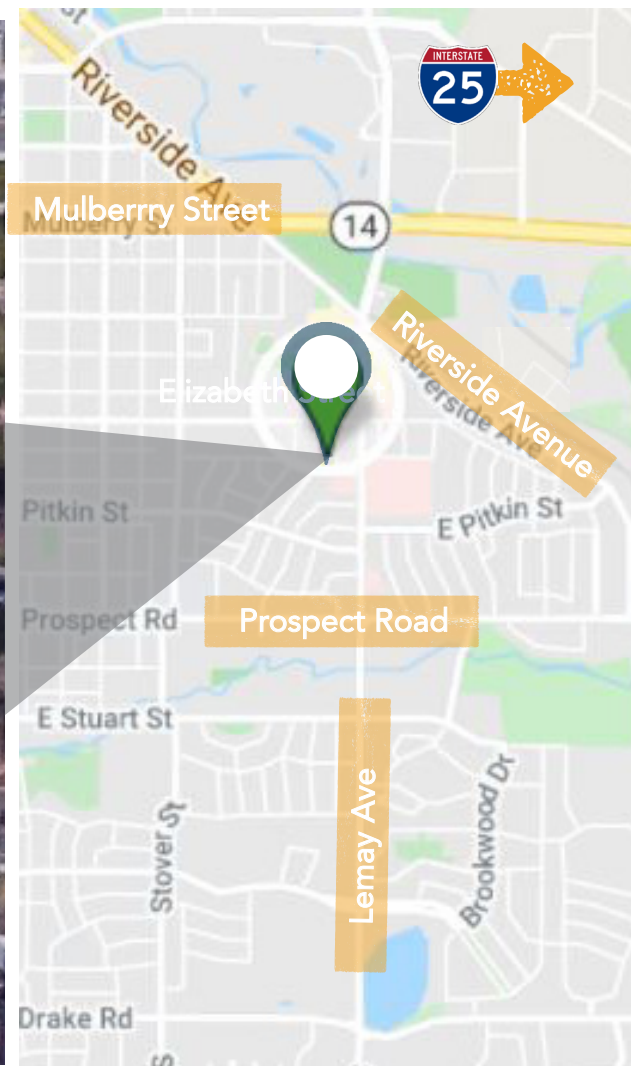
FLOOR PLAN - GARDEN LEVEL



**All square footage measurements are approximate and contingent upon final demising plan/measure*

1035 ROBERTSON STREET

AREA MAPS



Information contained herein is not guaranteed. Potential land purchasers and tenants are advised to verify all information. Price, terms and information are subject to change.

CONTACT: Nick Norton • 970-213-3116 • nnorton@waypointRE.com

CONTACT: Jake Arnold • 970-294-5331 • jarnold@waypointRE.com

