

Unit 1

2,496 SF

Main Level: 1,827 SF

Upper Level: 669 SF

Sale Price

\$435,000.00

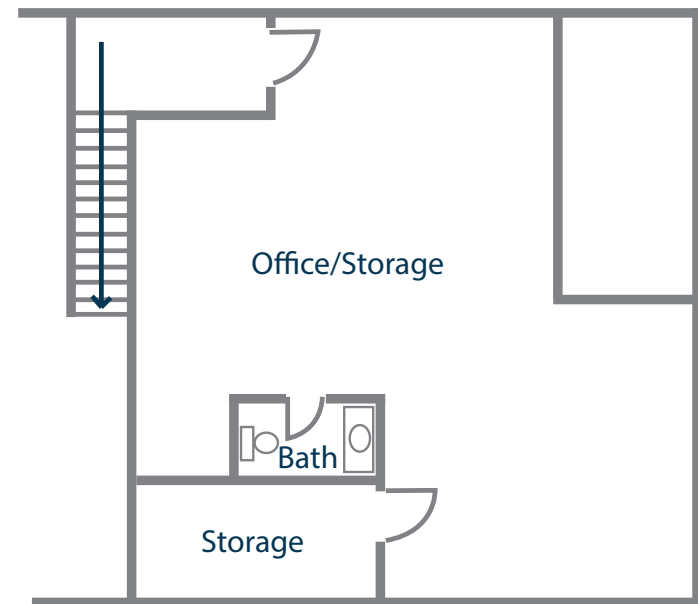
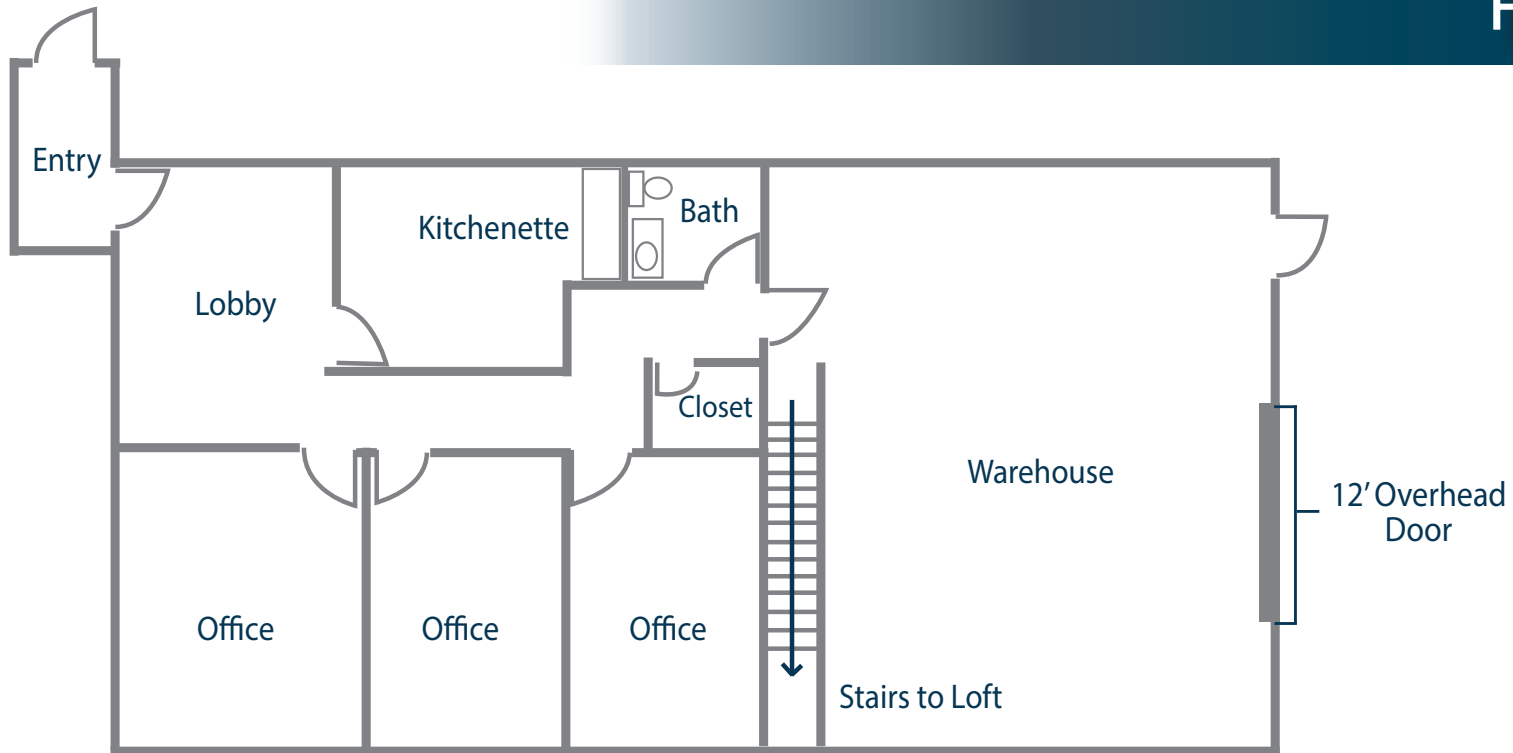
1305 DUFF DRIVE
UNIT #1
FORT COLLINS, CO 80524

NICELY FINISHED INDUSTRIAL / FLEX SPACE NEAR OLD TOWN FORT COLLINS

- Regional location with quick access to Interstate 25 and downtown on Mulberry Corridor
- Unit includes reception area, multiple offices, kitchenette, private restrooms, and secure storage
- Industrial warehouse with 12' overhead door, 14' clear height, and 3-phase power
- Monument and building signage available
- Designated parking



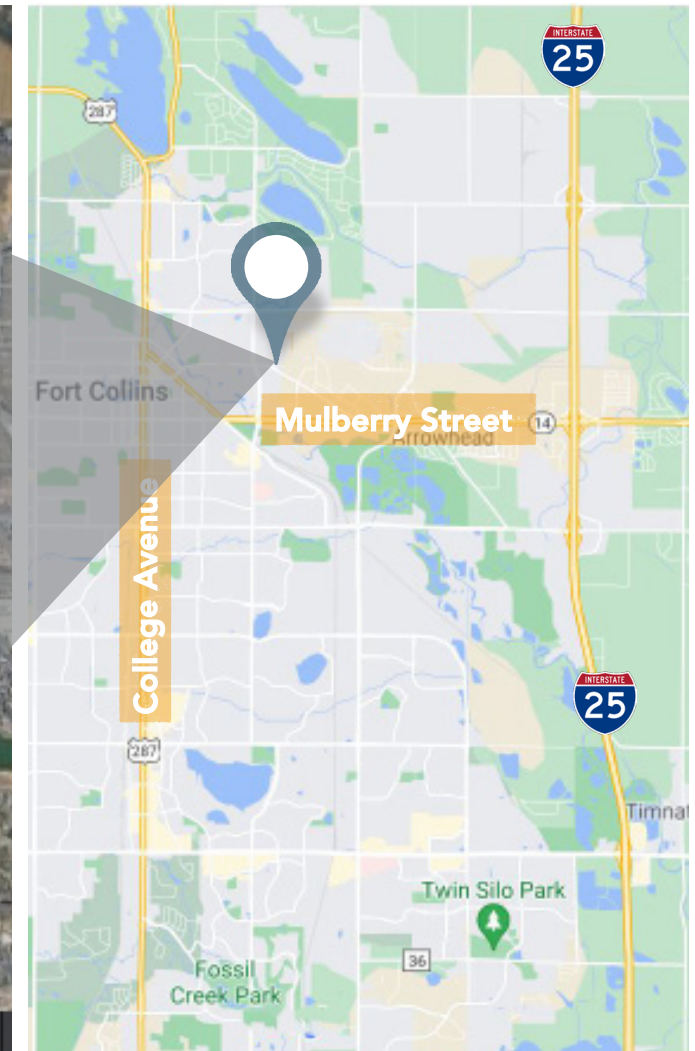
FLOORPLAN



PROPERTY PHOTOS



AREA MAPS



Information contained herein is not guaranteed. Potential land purchasers and tenants are advised to verify all information. Price, terms and information are subject to change.

CONTACT: David Katz, CCIM • 970-481-5808 • dkatz@waypointRE.com

