

702 4TH AVE
GREELEY, CO 80631

INDUSTRIAL
WAREHOUSE WITH
DESIGNATED YARD

6 OVERHEAD DOORS

FULLY DRIVE-THRU



Space Available:

3,296 SF

Modified Gross Lease:

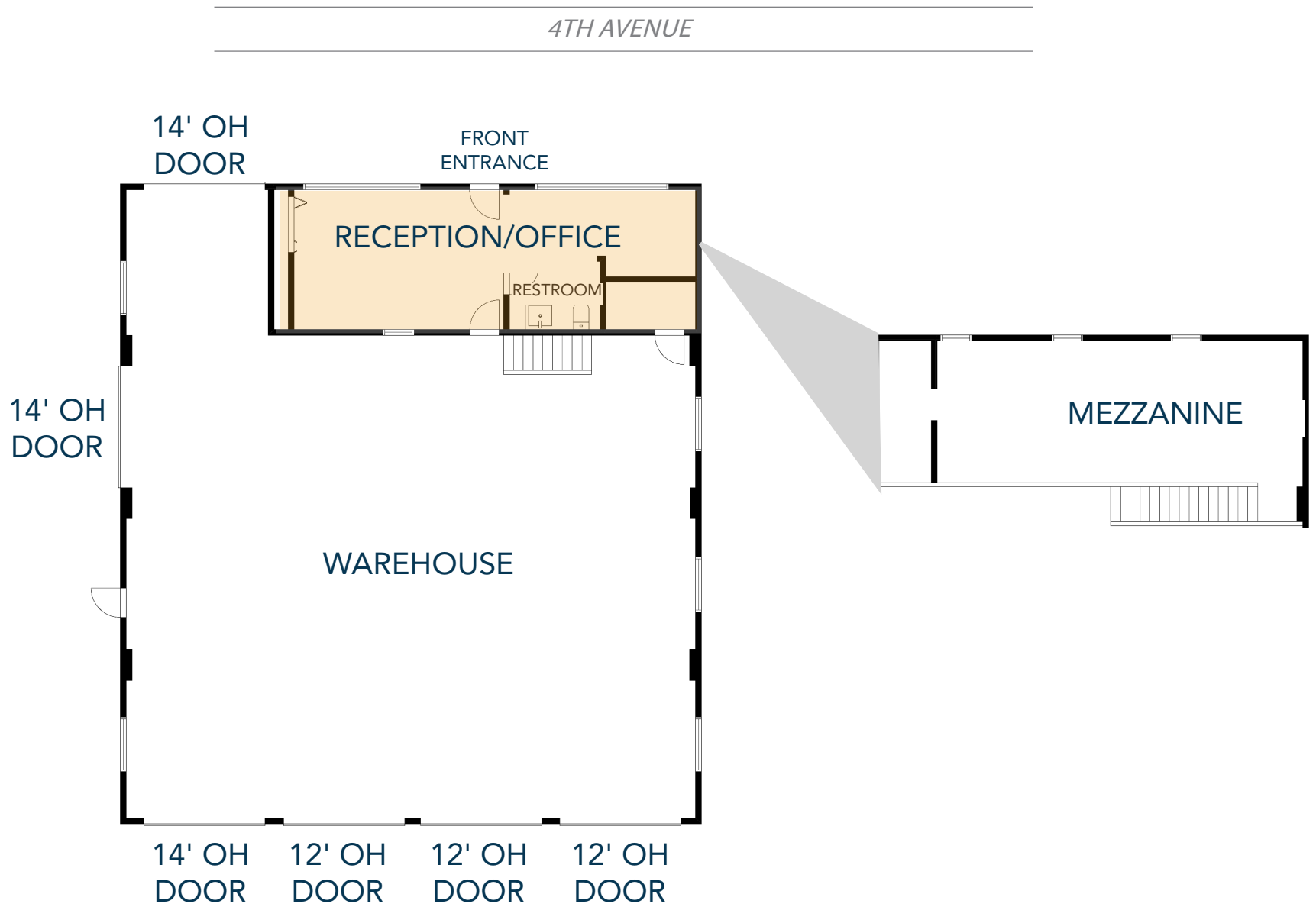
\$15.00/SF

INDUSTRIAL WAREHOUSE WITH YARD FOR LEASE IN CENTRAL GREELEY

- Warehouse space with office/reception area, private restroom, mezzanine, three 14' overhead doors, three 12' overhead doors, and secure yard
- Fully drive-through
- 3-phase power: 240v 200amp electric
- 0.65-acre yard



FLOORPLAN



702 4TH AVE PHOTOS



SITE PLAN



waypoint
REAL ESTATE

LOCAL MAP



REGIONAL MAP



CONTACT: Brian Smerud, CCIM • 970-415-0538 • bsmerud@waypointRE.com
Erik Caffee • 970-218-4284 • ecaffee@waypointRE.com

BRIAN SMERUD, CCIM / ERIK CAFFEE
125 S Howes St., Suite 500, Fort Collins, CO 80521 • 970-632-5050 • www.waypointRE.com