



WHEELER
Properties

3109 35TH AVENUE
LOTS 3, 5, 6
GREELEY, CO 80634

Available Lots

Sale Details

Lot 3 **22,353 SF**

Lot 3 **\$134,208** (\$6.00 / SF)

Lot 5 **37,432 SF**

Lot 5 **\$224,592** (\$6.00 / SF)

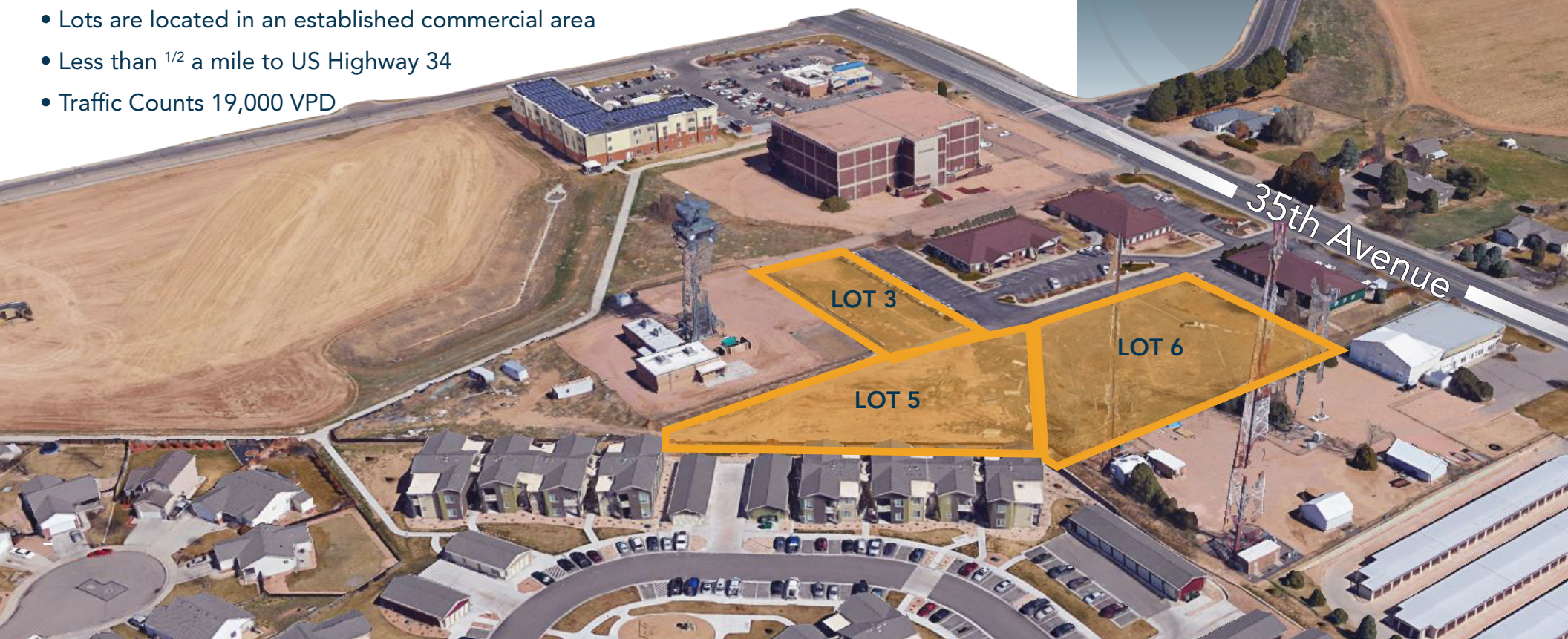
Lot 6 **37,277 SF**

Lot 6 **\$223,664** (\$6.00 / SF)

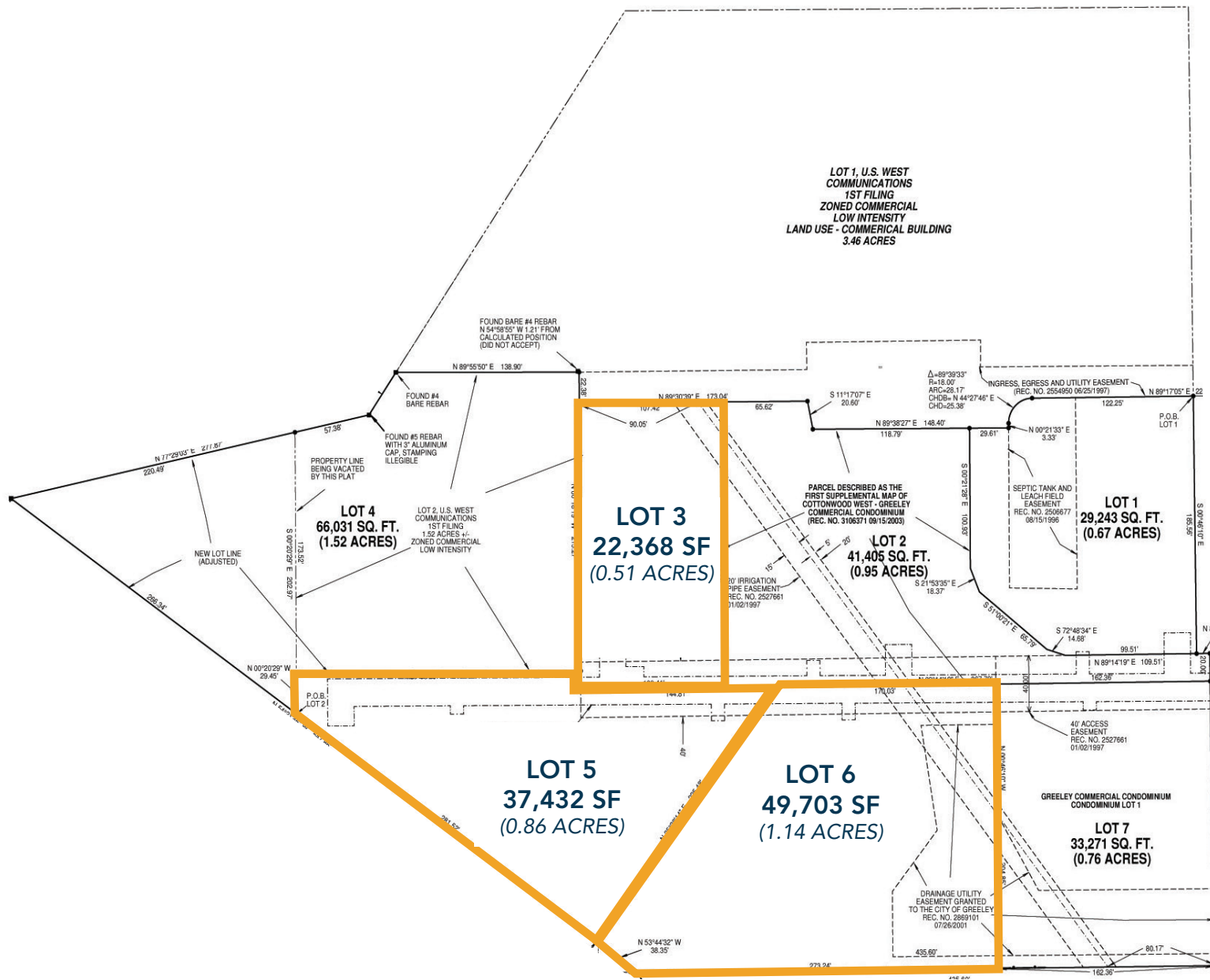
Information contained herein is not guaranteed. Potential land purchasers and tenants are advised to verify all information. Price, terms and information are subject to change.

CENTRALLY LOCATED COMMERCIAL ZONED LAND FOR SALE IN GREELEY COLORADO

- Nearby busy retail includes: Centerplace, Elk Lakes Shopping Center, Westlake Shopping Center and Greeley Commons Shopping Center
- Lots are located in an established commercial area
- Less than 1/2 a mile to US Highway 34
- Traffic Counts 19,000 VPD



PLAT MAP



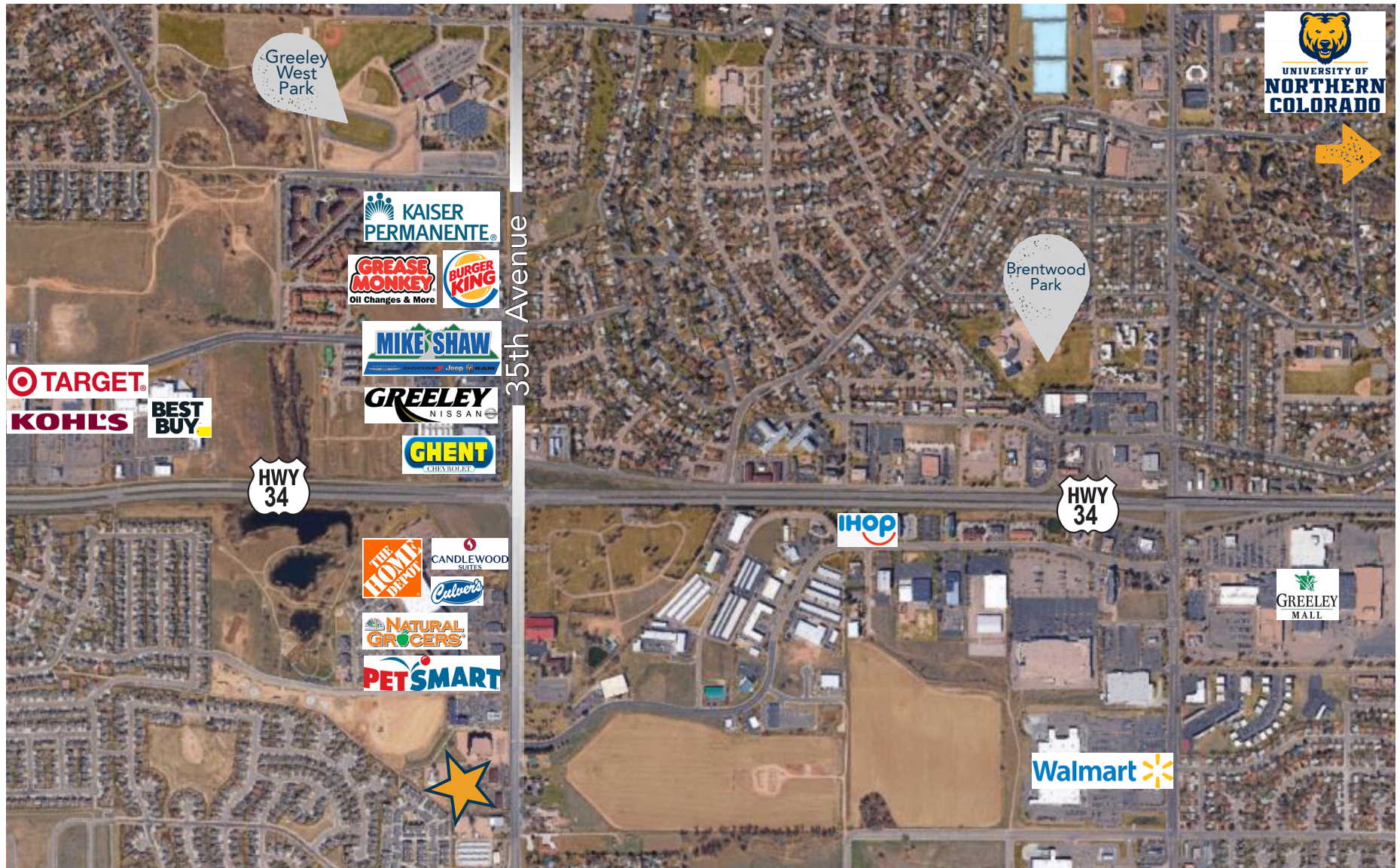
waypoint
REAL ESTATE

WHEELER
Properties

125 S Howes Street Suite 500, Fort Collins, CO 80521 • 970-632-5050 • www.waypointRE.com

BRAIN SMERUD, CCIM / RON RANDEL, CCIM

REGIONAL MAP



CONTACT: Brian Smerud, CCIM • 970-415-0538 • bsmerud@waypointRE.com

Ron Randel, CCIM • 970-590-6222 • Ron@wheelerpropertiesinc.com