

2038 VERMONT DRIVE FORT COLLINS, CO 80525

PREFERRED USES:

- CHIROPRACTOR
- FUNCTIONAL MEDICINE
- ACUPUNCTURE



Available

Suite 3

Lease Rate

\$1,600 / mo. gross

Dimensions
(approx.)

12'8" x 22'

MODERN OFFICE SPACE WITH KITCHENETTE AVAILABLE FOR LEASE

- Professionally finished second floor single office with sink and kitchenette, elevator access, and modern, shared reception area
- Located on Timberline Corridor with easy access to various restaurants and retailers
- Abundance of on-site parking

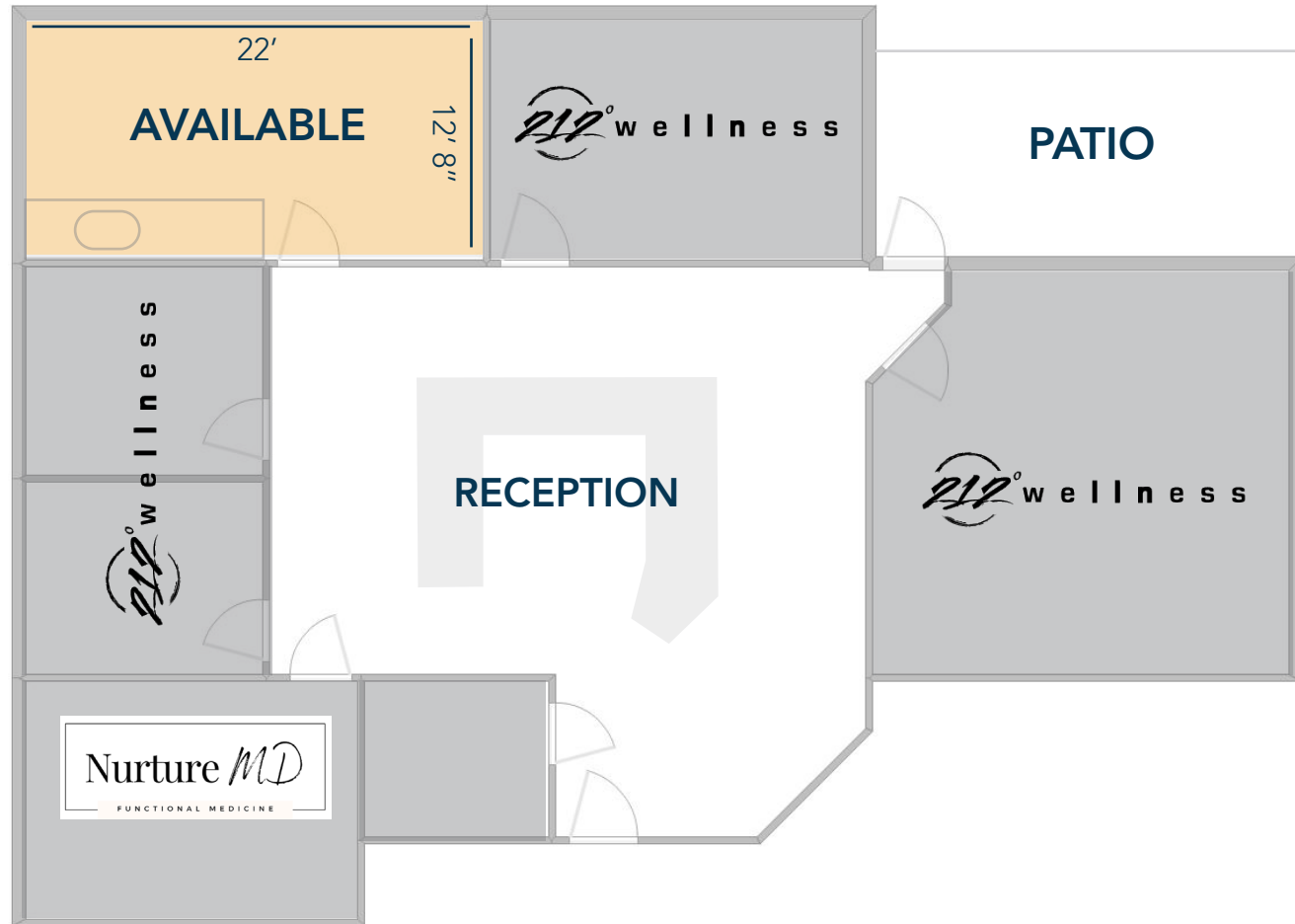
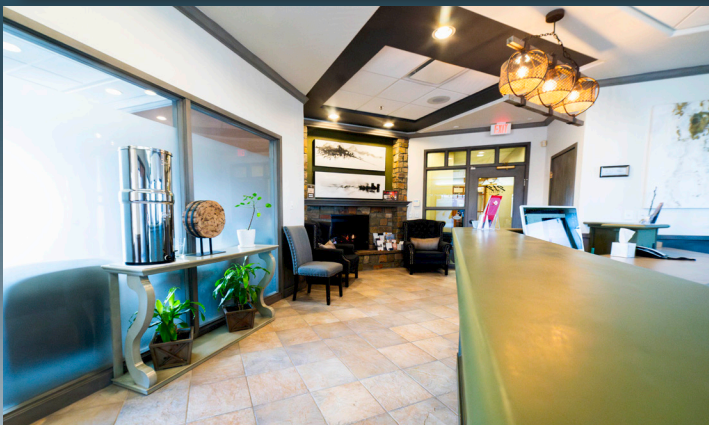


UNIT 3 PHOTOS

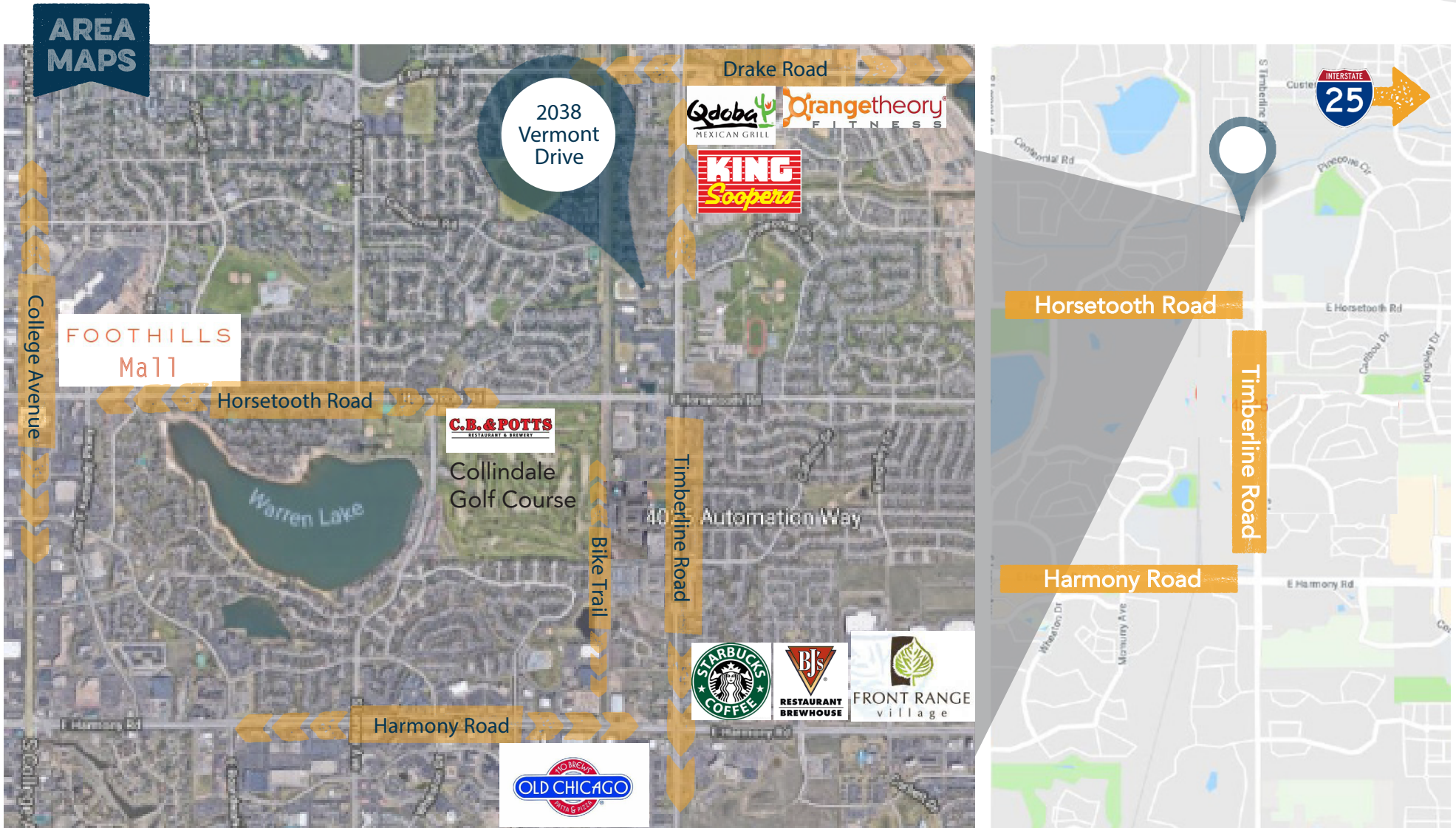


Reception Photos

FLOOR PLAN



2038 VERMONT DRIVE



Information contained herein is not guaranteed. Potential land purchasers and tenants are advised to verify all information. Price, terms and information are subject to change.



CONTACT: Nick Norton, CCIM • 970-213-3116 • nnorton@waypointRE.com
Jake Arnold • 970-294-5331 • jarnold@waypointRE.com

NICK NORTON, CCIM / JAKE ARNOLD
125 S Howes Street Suite 500, Fort Collins, CO 80521 • 970-632-5050 • www.waypointRE.com