



waypoint
REAL ESTATE

1019 39TH AVENUE
GREELEY, CO 80634

Available Space

Suite H/I/J/K 1,295 SF

Suite M Private Single Office

Lease Rates

Suite H/I/J/K \$14.83 / SF Gross
\$1,600.00 / Mo

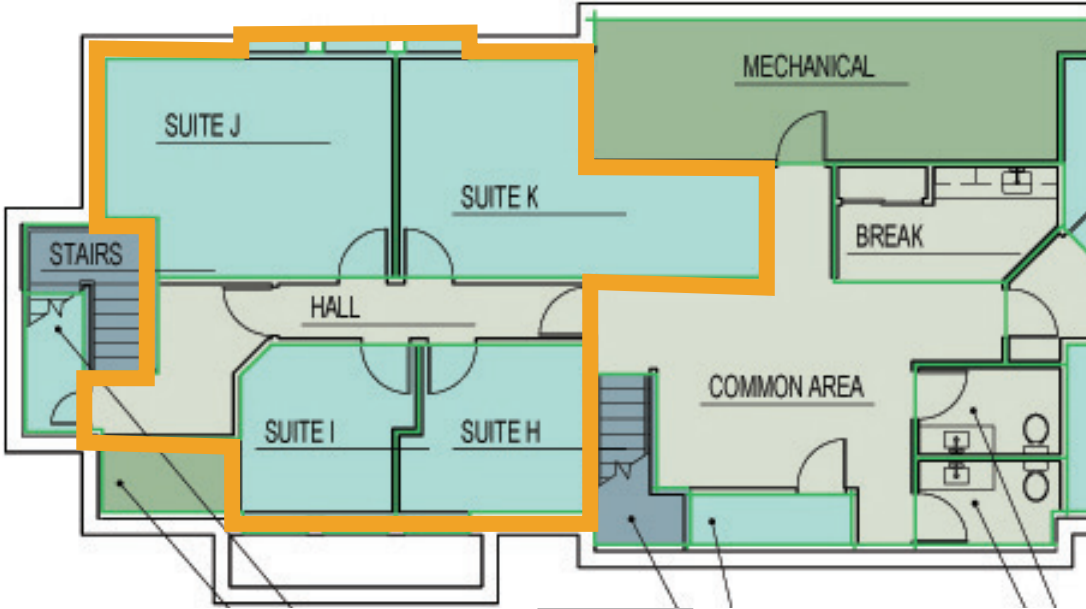
Suite M \$495 / month

LOCATED IN THE TOMMY C'S BUSINESS PARK IN CENTRAL GREELEY

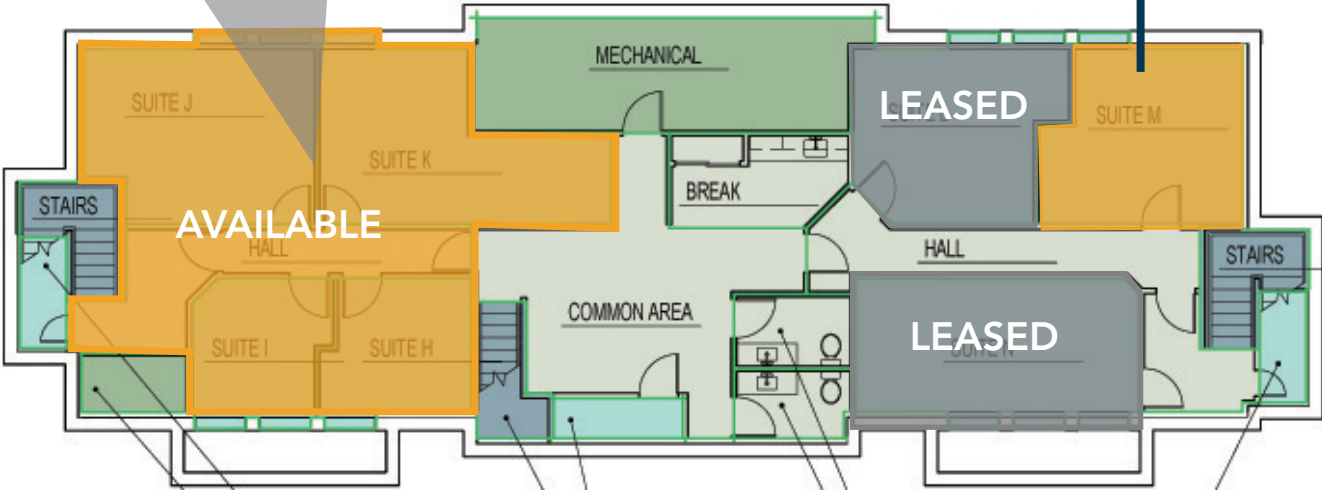
- Executive Office Space located in a Professional Business Park in West Greeley
- Located just South of Business Highway 34
- Common Area/Break Room on each level
- Zoned Commercial Low
- Gross Leases, Tenant pays data



FLOOR PLAN - SUITE H/I/J/K



SINGLE OFFICE AVAILABLE



PROPERTY PHOTOS



AREA MAP

