



Lot Size

89,759 SF (2.06 acres)

Sale Price

\$1,100,000 (\$12.25/SF)

*DEVELOPMENT READY, FULLY ENTITLED MULTIFAMILY LAND - DOWNTOWN WINDSOR, CO*

- Current Entitlement Approvals: 3 Buildings with a total of 48 Units
- Adjacent to Windsor Lake and Downtown Windsor
- Located at 'Main and Main'
- At Intersection of Highway 257 and Highway 392

# GRASSLANDS PARK WINDSOR, CO 80550

SALE OR JOINT VENTURE /  
LAND CONTRIBUTION  
AVAILABLE

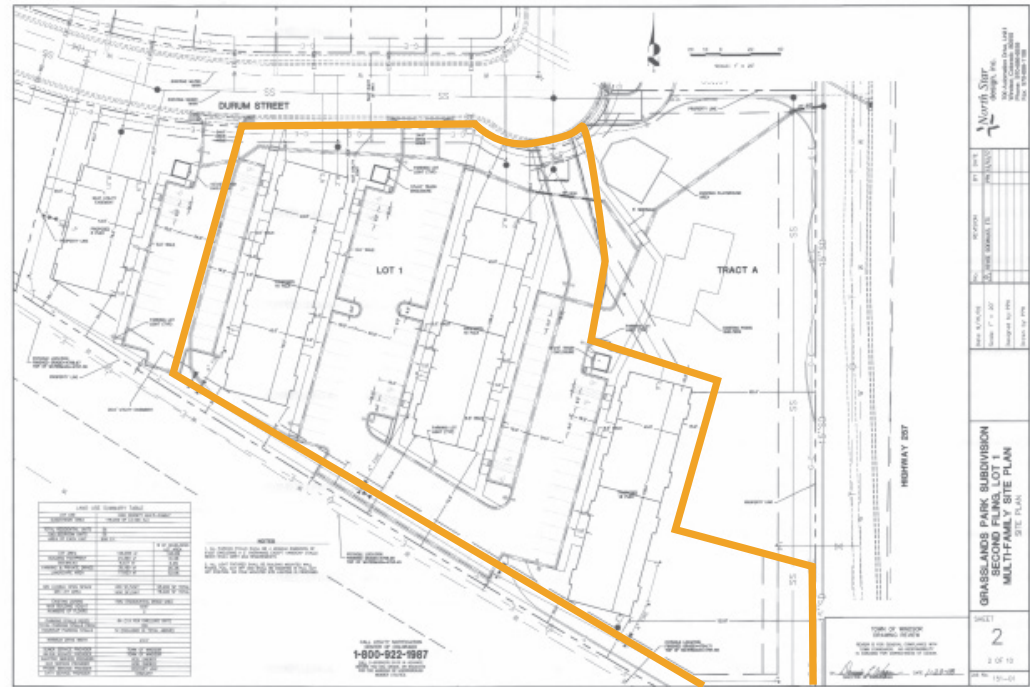


Information contained herein is not guaranteed. Potential land purchasers and tenants are advised to verify all information. Price, terms and information are subject to change.



# PROPERTY ELEVATIONS & SITE PLAN

3 Buildings | 48 Units



Multi-family  
Development  
Ready

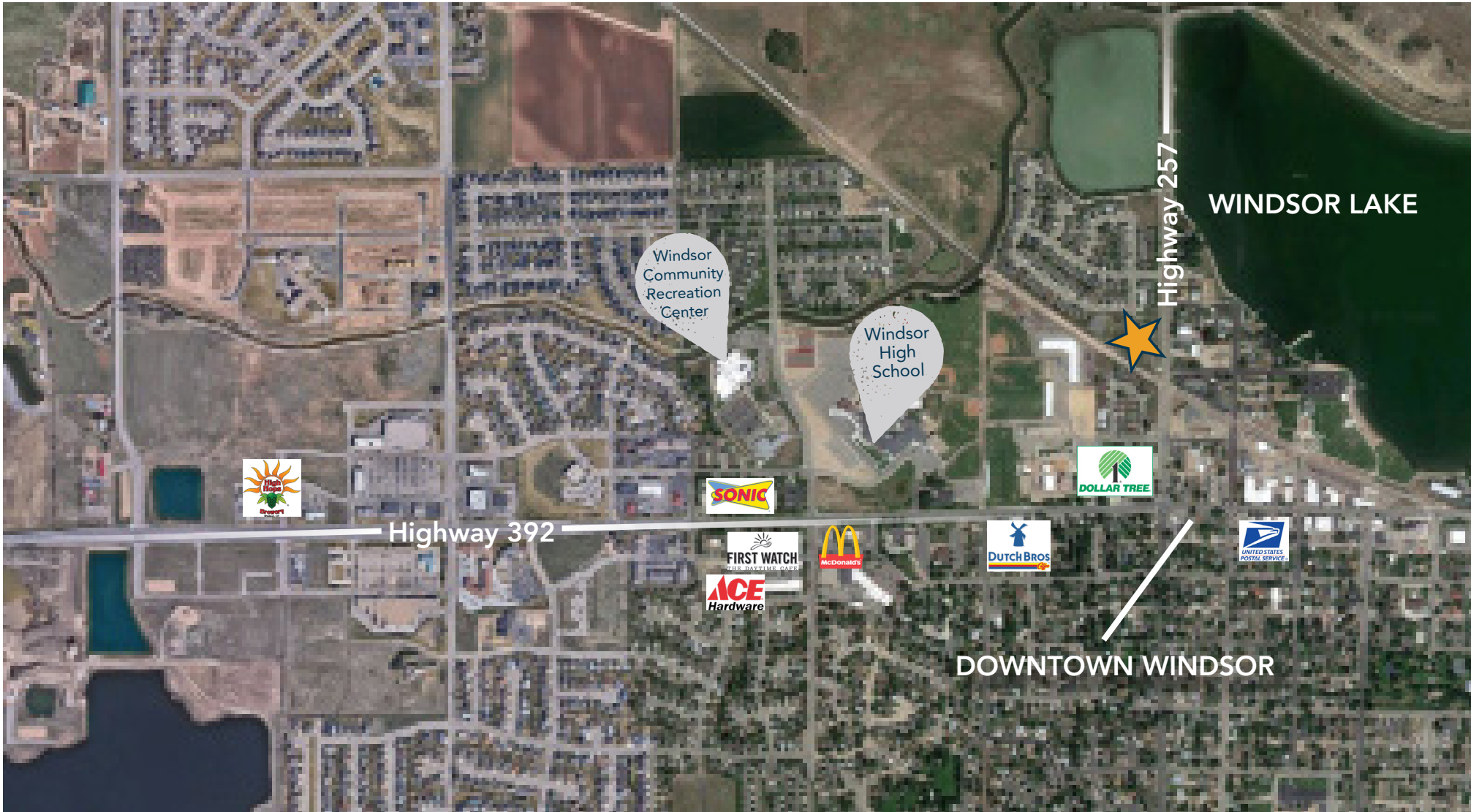


# PROPERTY PHOTOS





# REGIONAL MAP



**CONTACT:** Josh Guernsey • 970-218-2331 • [jguernsey@waypointRE.com](mailto:jguernsey@waypointRE.com)  
David Katz, CCIM • 970-481-5808 • [jguernsey@waypointRE.com](mailto:jguernsey@waypointRE.com)

JOSH GUERNSEY / DAVID KATZ, CCIM  
125 S Howes Street Suite 500, Fort Collins, CO 80521 • 970-632-5050 • [www.waypointRE.com](http://www.waypointRE.com)