

Space Available:
1,736 SF

Sale Price:
\$620,000
(\$357.14/SF)

DISTINCTIVE 1940S DUPLEX IN CENTRALLY LOCATED IN DESIRABLE OLD PROSPECT NEIGHBORHOOD

- 1,064 SF main level with 2 bedrooms and 1 bath; 672 SF garden level with 2 bedrooms and 1 bath
- Many charming features throughout include archways, cove ceilings, egress windows, exposed dark wood trim, spacious rooms, plus newer roof, gutters & furnace.
- Set on a 5,545 SF lot with 1-car garage, flagstone patio, outdoor home bar, mature landscaping, and raised beds
- Just minutes to CSU, the lively Laurel Street District, and Old Town
- Main level is available for owner occupant

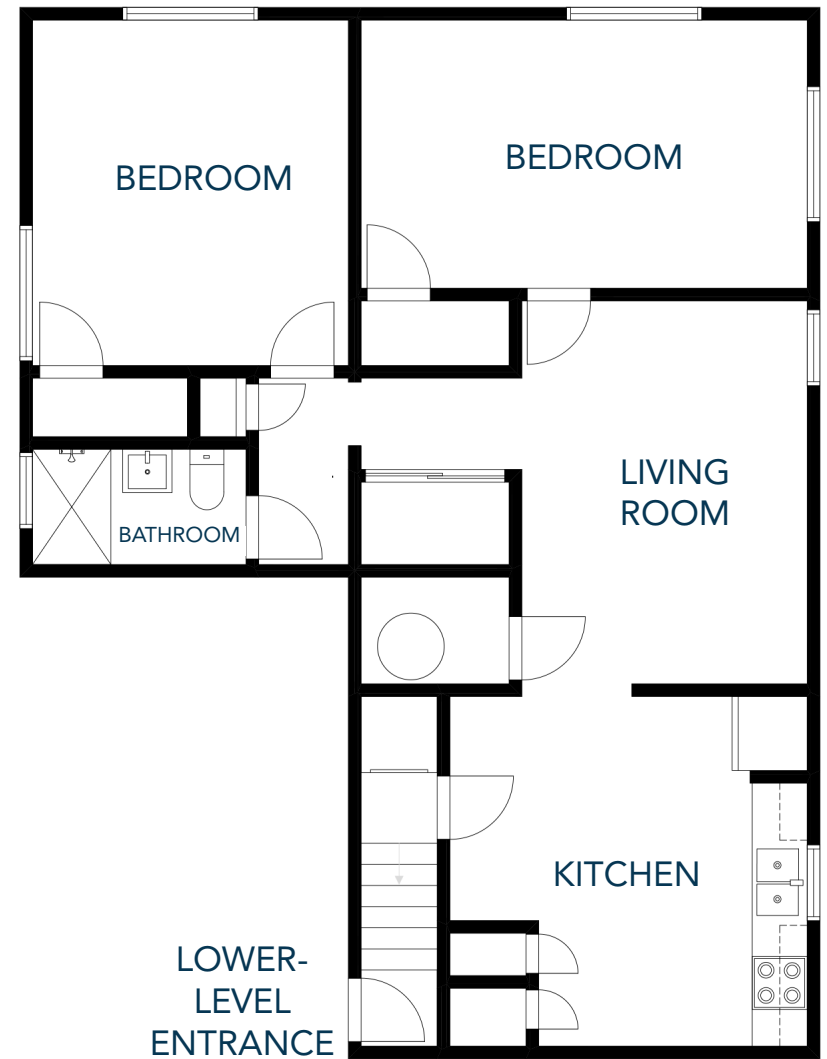


1618 PETERSON PLACE — FLOORPLAN

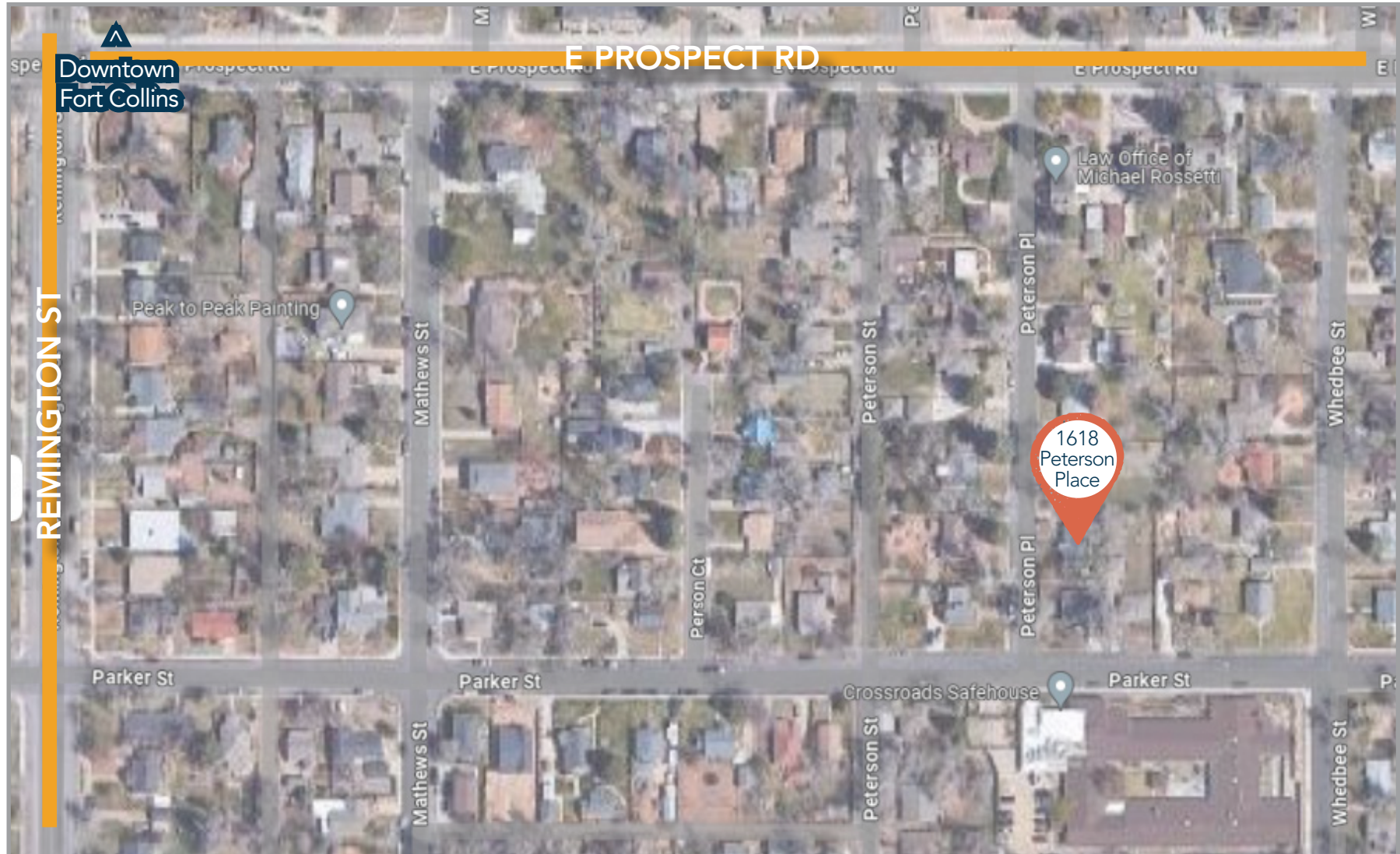
MAIN LEVEL: 1,064 SF



LOWER LEVEL: 672 SF



Area Map



CONTACT: Nick Norton, CCIM • 970-213-3116 • nnorton@waypointRE.com
Jake Arnold • 970-294-5331 • jarnold@waypointRE.com



125 S. Howes St. Suite 500, Fort Collins, CO 80524 • 970-632-5050 • www.waypointRE.com

The information contained in this offering has been obtained from sources believed to be reliable; however, the accuracy cannot be guaranteed. All potential buyers and/or tenants are hereby advised to perform their own due diligence and independently verify all of the information set forth herein.