

2720 COUNCIL TREE AVENUE

FRONT RANGE VILLAGE
FORT COLLINS, CO 80525



Suite 160: 1,314 SF

Lease Rate: \$21.00 / SF NNN

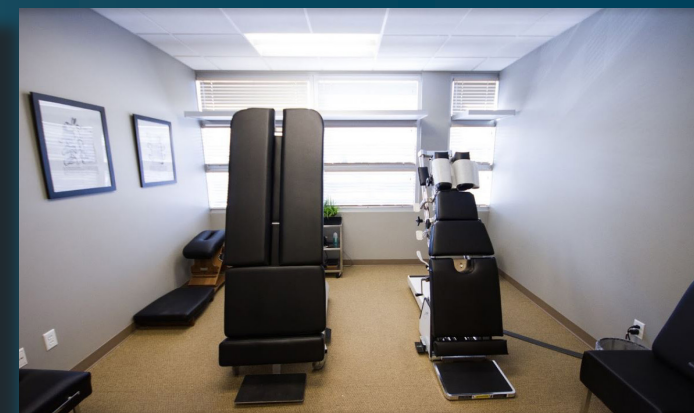
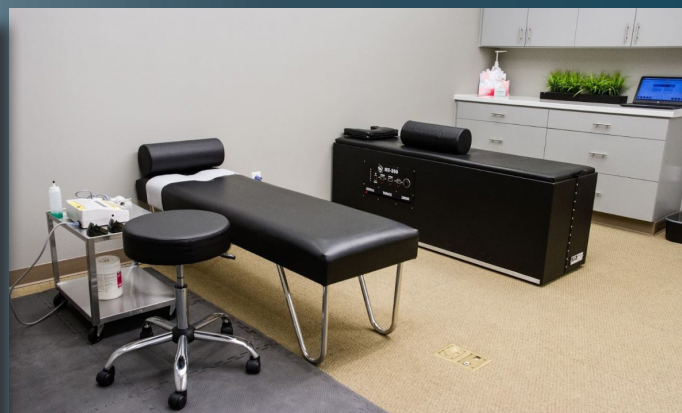
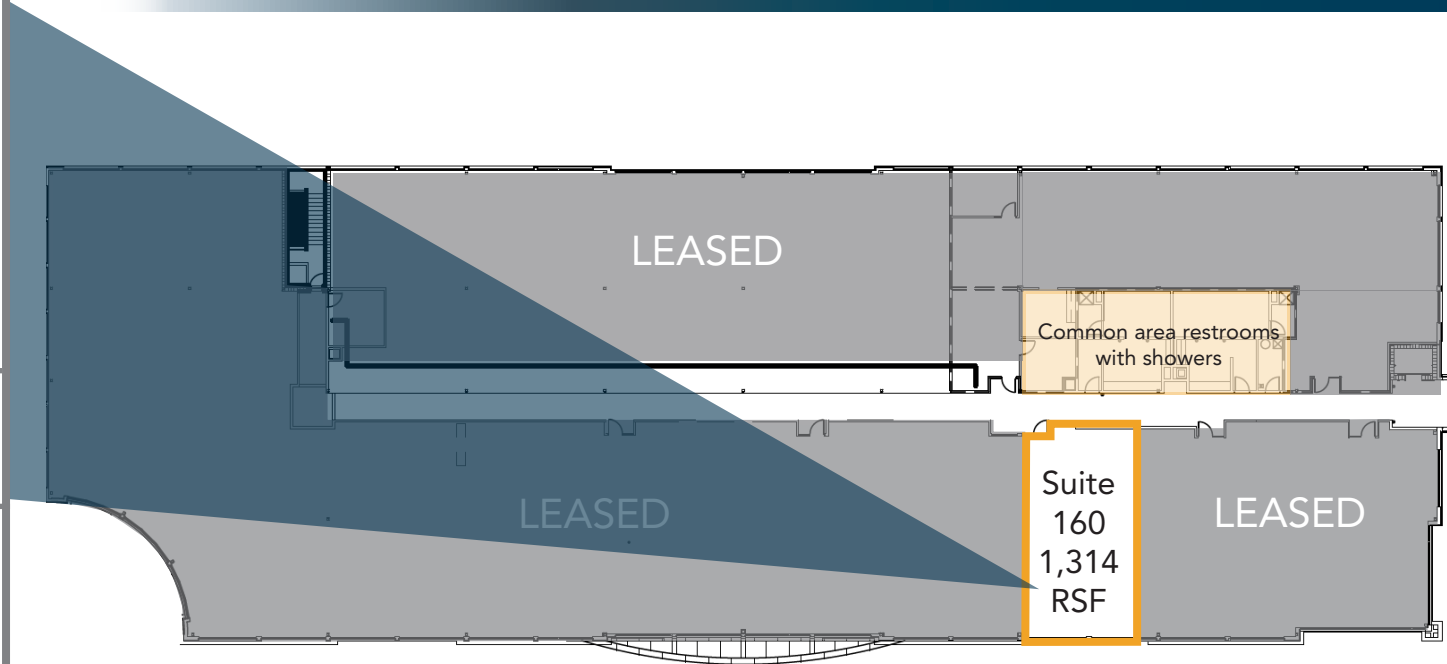
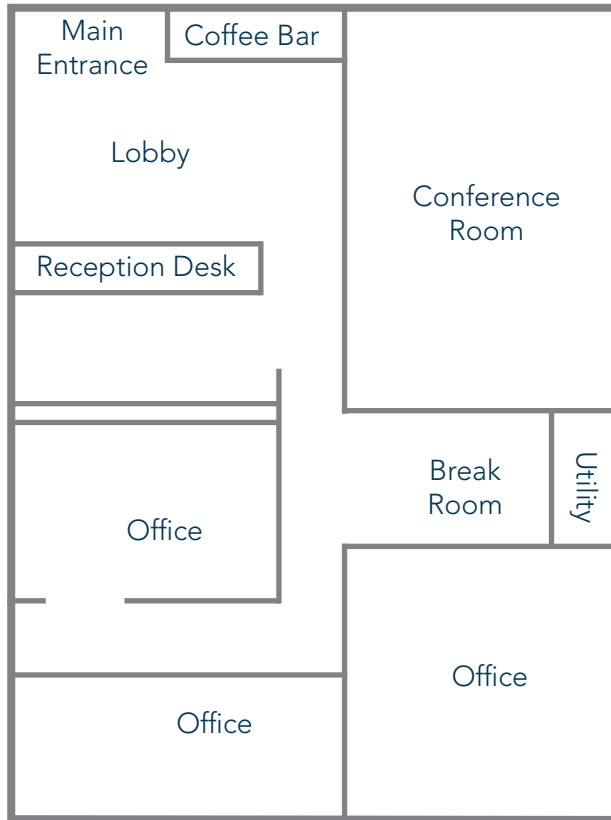
NNN Rate: \$11.25 / SF (trash included)

ENJOY THE BENEFITS OF A TRUE MIXED-USE DEVELOPMENT

- Turn Key / Move-in ready with an excellent professional presentation
- Close proximity to I-25 offers easy regional access
- Convenient, high energy & creative environment
- Surrounded by some of the best retail shopping and restaurants in Northern Colorado
- Green building with LEED features



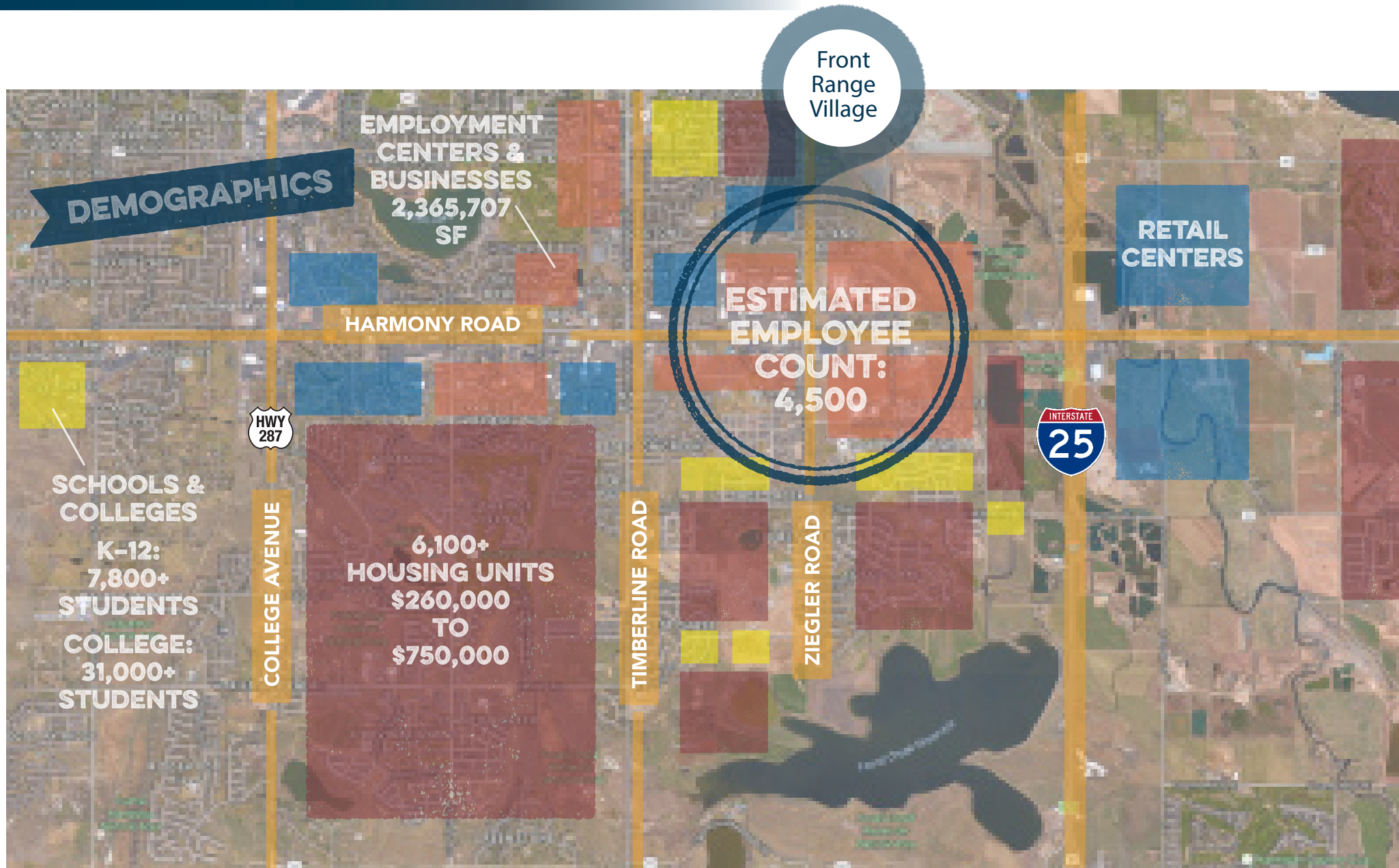
FLOOR PLAN



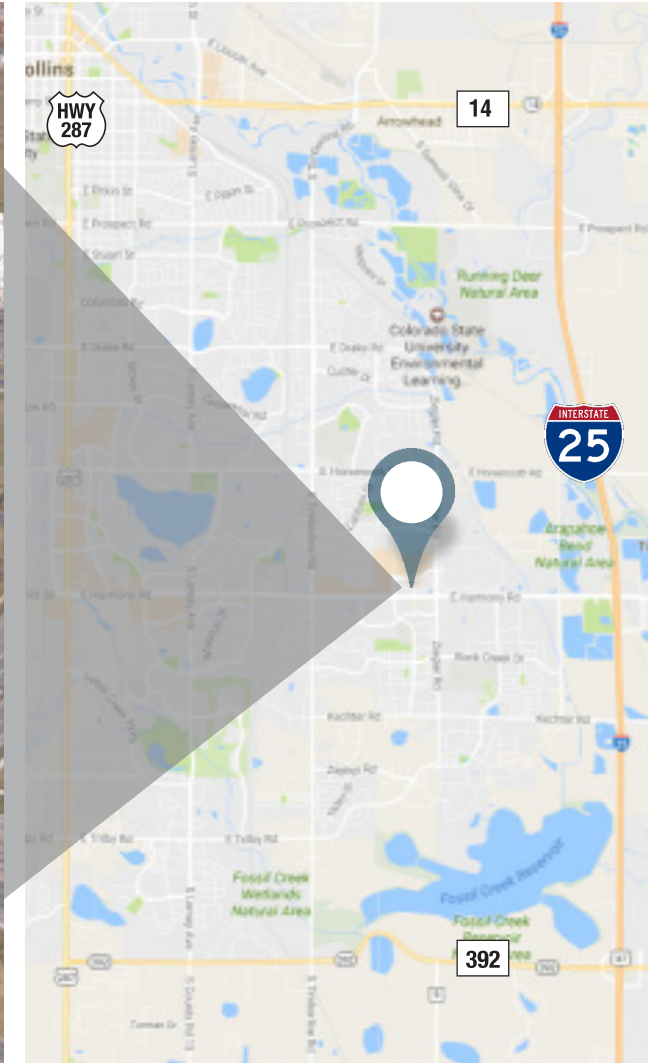
Information contained herein is not guaranteed. Potential land purchasers and tenants are advised to verify all information. Price, terms and information are subject to change.

125 S Howes Street, Suite 500, Fort Collins, CO 80521 • 970-632-5050 • www.waypointRE.com

GREG ROEDER



2720 COUNCIL TREE AVENUE



Information contained herein is not guaranteed. Potential land purchasers and tenants are advised to verify all information. Price, terms and information are subject to change.



CONTACT: Greg Roeder • 970-213-2095 • groeder@waypointRE.com

GREG ROEDER
125 S Howes Street, Suite 500, Fort Collins, CO 80521 • 970-632-5050 • www.waypointRE.com