

953 1ST STREET
BERTHOUD, 80513



Space Available: **1,800 SF** (approx.)

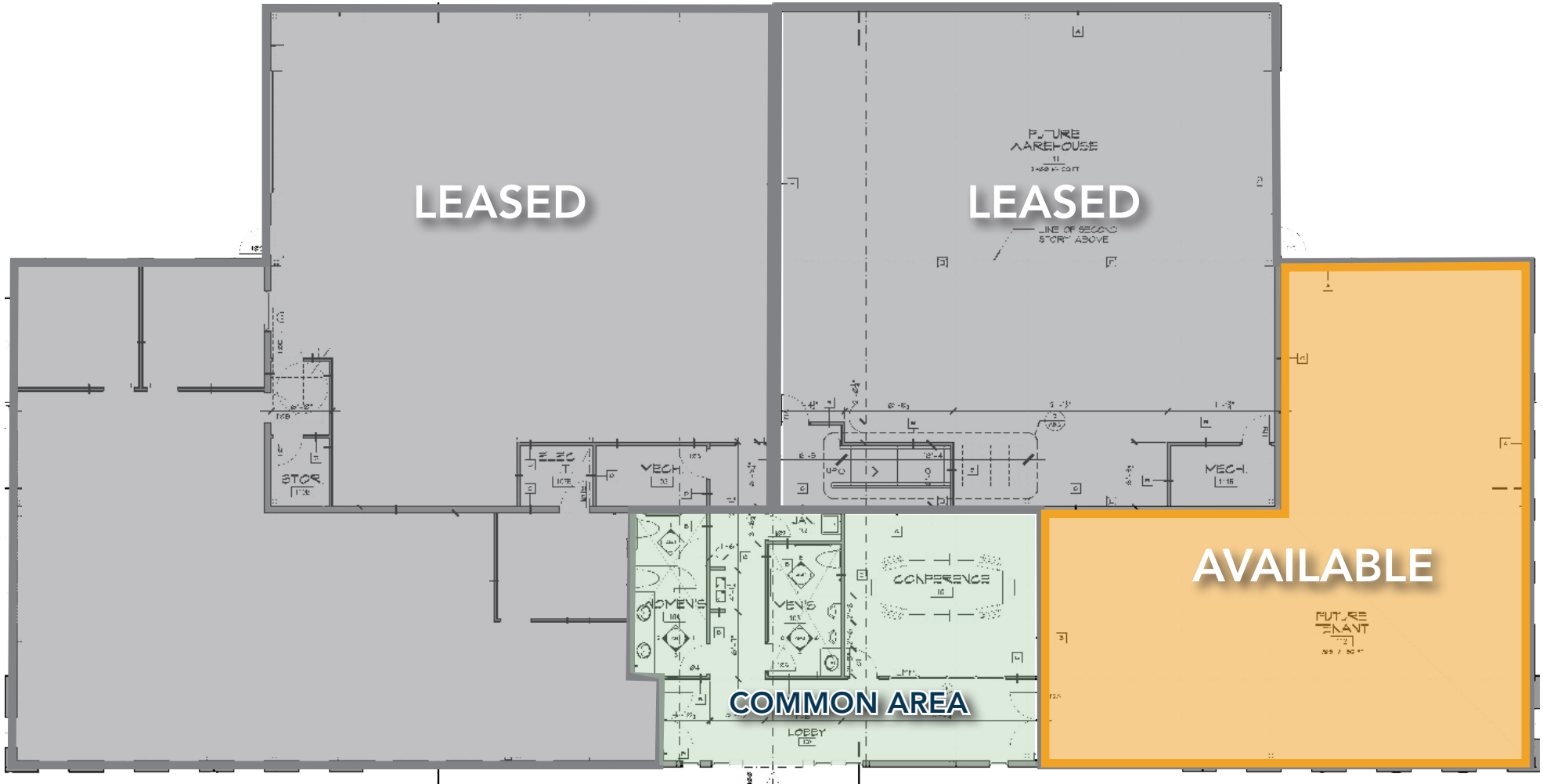
Sublease Rate: **\$2,800/mo. gross**
(utilities included)

SPACIOUS OFFICE UNIT FOR SUBLEASE IN NEW BUILD

- Lease ends December 31, 2024
- Open plan office suite with access to shared conference room, restrooms and significant yard space
- Building signage available
- Centrally located in Berthoud with easy access to US-287 & CO-56



FLOOR PLAN



CONTACT: David Katz, CCIM • 970-481-5808 • dkatz@waypointRE.com
Jack Chunko • 970-213-5063 • jchunko@waypointRE.com