

MacLean Dixie.

Built on a solid foundation.

MacLean Dixie is part of MacLean-Fogg, a diversified international manufacturing company. A result of the acquisition and merger of Joslyn and Dixie, two prominent soil anchor manufacturers, MacLean Dixie is now one of the leading suppliers of steel deep foundation systems for use in residential, commercial and marine applications. Our comprehensive product line for residential and commercial applications includes engineered solutions for tension, compression, and structural stabilization in many different soils.

Quality that is second to none.

Why do installers and engineers across the nation choose MacLean Dixie products time and time again? Perhaps it is because our quality standards and rigorous testing procedures ensure that our products are second to none.

Materials meet strict ASTM standards.

We can verify the chemical composition of every lot of steel back to the original mill that produced it. So we know that the chemistry, physical and dimensional properties are in accordance to ASTM and our stringent standards.

State-of-the-art fabrication.

With one of the largest manufacturing facilities in the industry, we're equipped to turn products around faster, more efficiently and most cost effectively.

Visit www.MacLeanDixie.com for more information and technical support.



Building Solid Foundations



11411 Addison Avenue
Franklin Park, IL 60131
Phone: 847.455.0014 Fax: 847.455.0029

Tiebacks



Building a solid foundation

The solution you can depend on



Building Solid Foundations



MacLean Dixie HFS™ Tiebacks

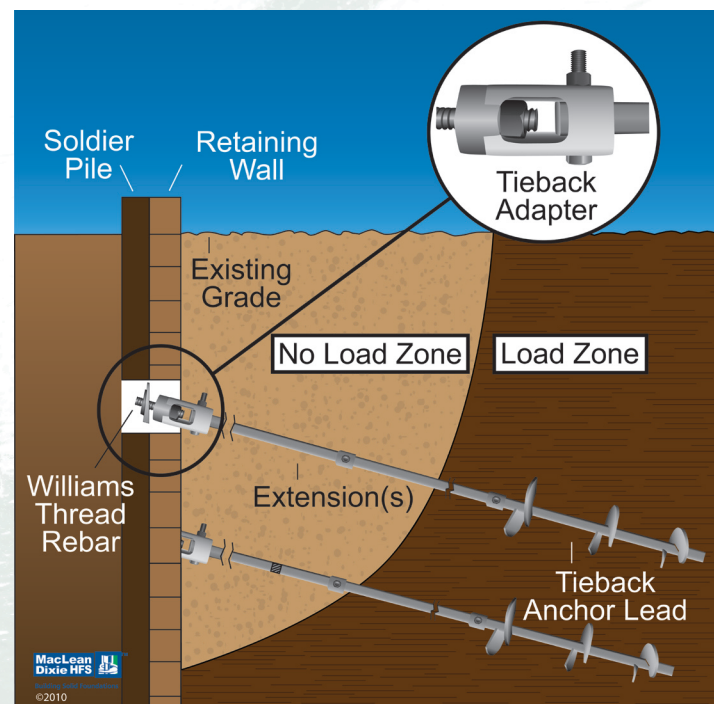
MacLean Dixie offers a broad range of steel helical screw anchors for tieback applications. We offer many time proven solutions with experience in anchoring since the 1920's. Tieback systems can be used for supporting the walls of an excavation as well as support for sea walls. It is important that the product and installation meets stringent requirements to ensure the quality and workmanship of the manufactured product and that installation is performed by qualified and certified technicians to ensure the tieback anchors will perform as expected.



Typical installation of helical tieback anchors to support walls during excavation.

Installation

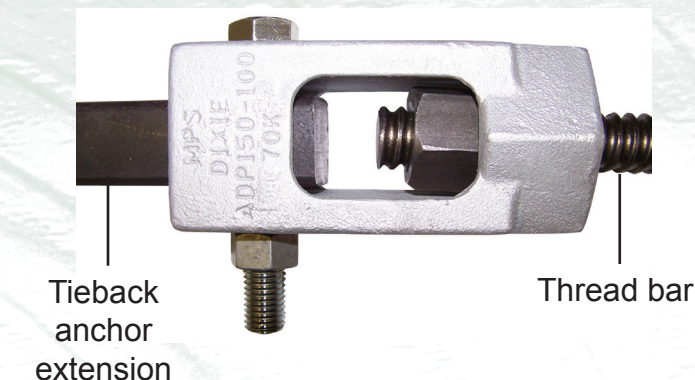
A Round Corner Square Shaft (RCS) lead is rotated into the soil load zone by a hydraulic drive head. Extensions are added as necessary to embed the helices past the no-load zone and into competent soil. A calibrated torque monitor is used to measure the installing torque to confirm the helical anchor is installed to the required load.



Helical tiebacks can be installed quickly to any embedment depth

Tieback Adapters

Tieback adapters are easy-to-install adapters that are bolted to the last extension. A thread bar is field cut to length and connected to the opposite side of the adapter. Nuts are added and tensioned to complete the installation.



Load Capacity

Available in three ultimate load capacities:

- 1-1/2" RCS to 70,000 lbs.
- 1-3/4" RCS to 100,000 lbs.
- 2" RCS to 150,000 lbs.

Quality Testing

MacLean Dixie has qualified products to meet the IBC (International Building Codes) ICC-ES AC308 Acceptance Criteria for Helical Foundation Systems and Devices (ESR 3032). This should be an important criterion when selecting the supplier to protect your investment for years to come.

Find out more at
www.MacLeanDixie.com

Visit our website for more information and technical specifications on all of our products.

Features and Benefits:

- Load can be applied immediately after installation - no waiting for grout to cure
- Installs in any weather
- Installs with most equipment with a hydraulic drive head
- Continuous torque monitoring assures each tieback anchor will meet the load requirement
- Reduces construction time
- Suitable for permanent or temporary applications
- No spoils to remove
- Removable
- Contributes to green environment
- Available standard hot dip galvanized ASTM A123 or black (not coated)