



WAKARUSA COACH CO.

BECAUSE QUALITY MATTERS

COMMERCIAL-GRADE MOTORCOACH SHELLS

**DESIGNED SPECIFICALLY FOR THE MOBILE
MEDICAL AND SPECIALTY VEHICLE INDUSTRY.**



WAKARUSA COACH CO.

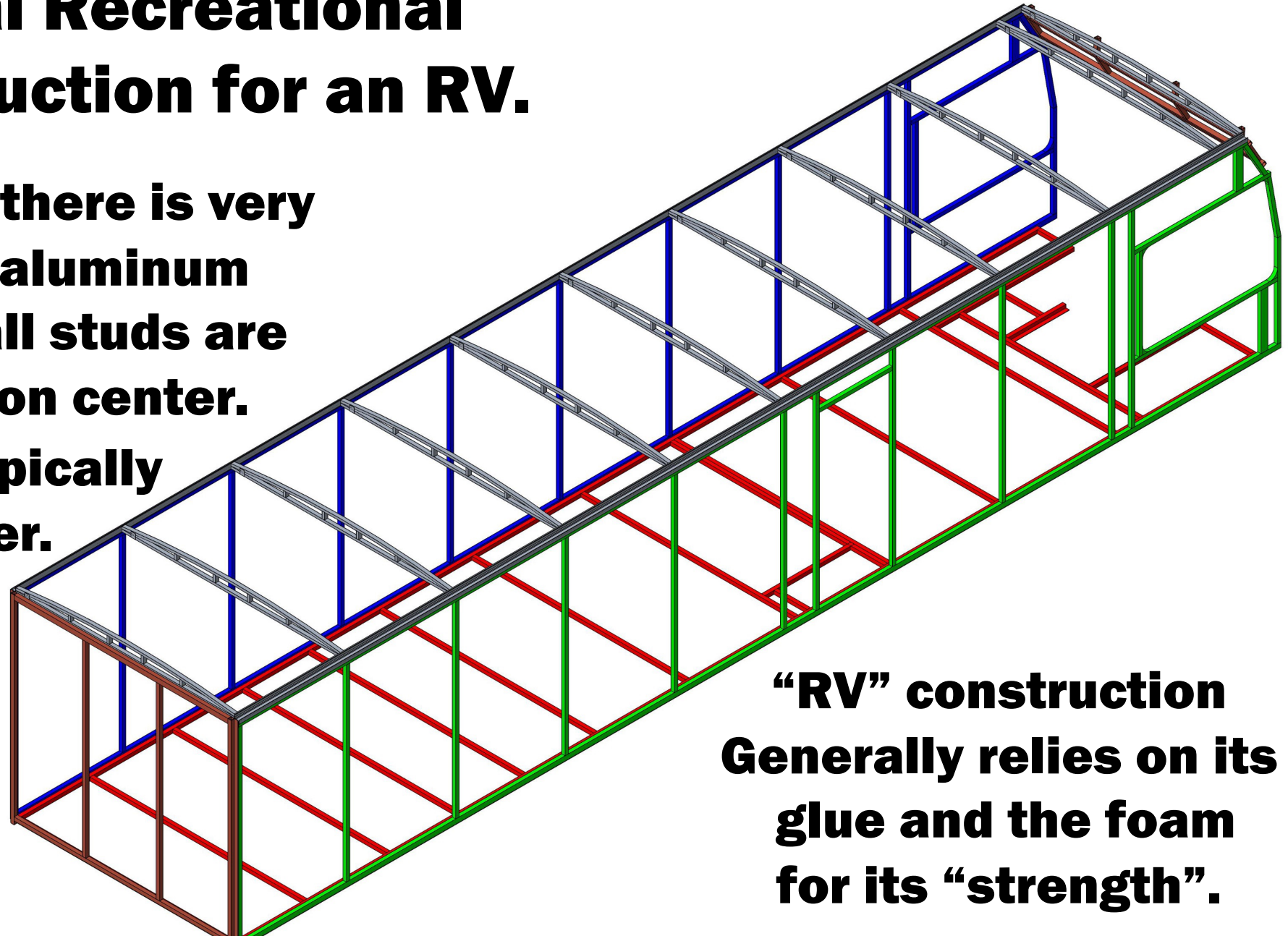


This is typical Recreational Vehicle Construction for an RV.

In most instances, there is very minimal tubular aluminum structure. Sidewall studs are typically only 4' on center.

Roof Trusses are typically only 4' on center.

Window openings are not typically framed with aluminum.

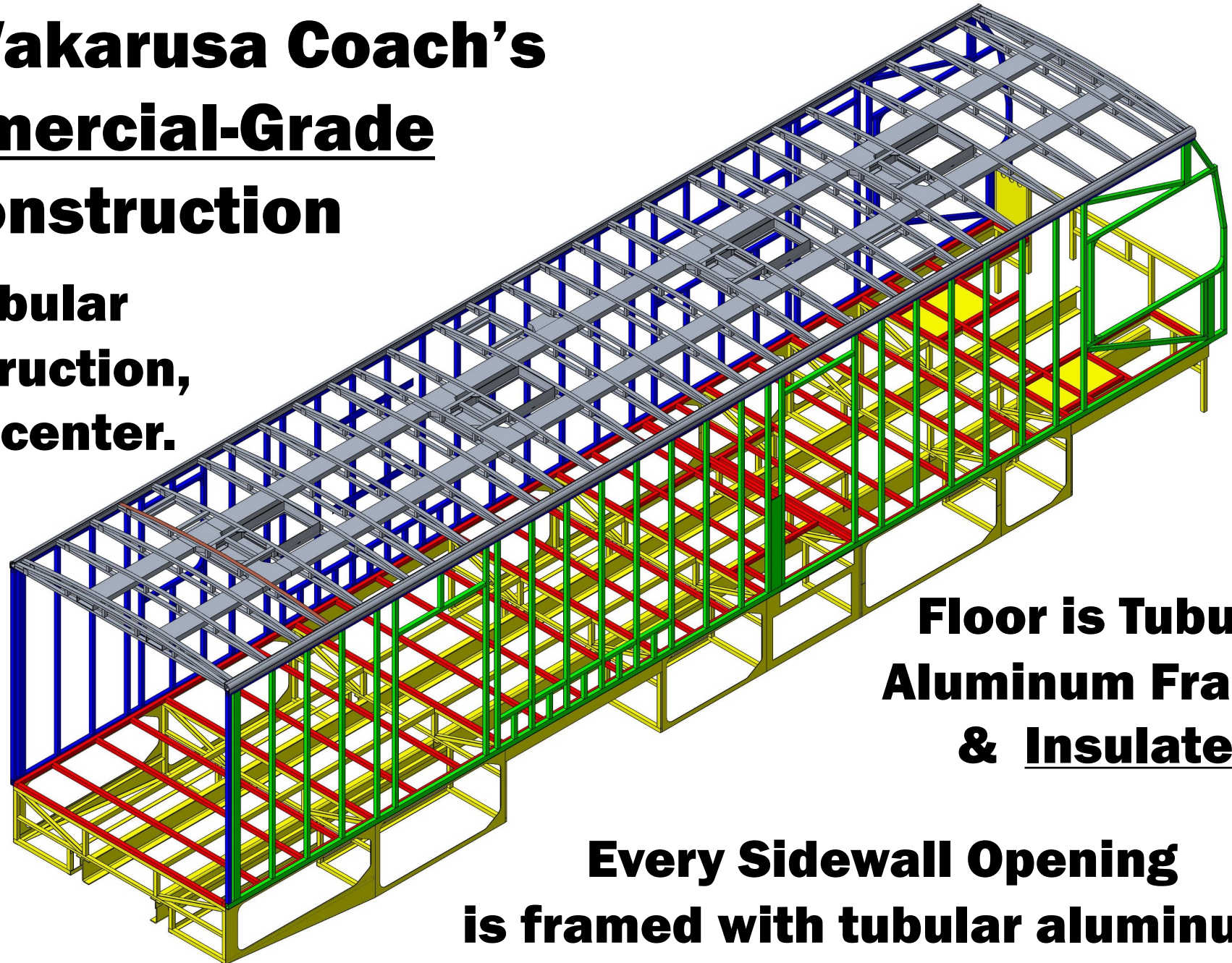


“RV” construction Generally relies on its glue and the foam for its “strength”.

This is Wakarusa Coach's Commercial-Grade Construction

**3" and 1.5" Tubular
Aluminum Construction,
w/Studs 16" on center.**

**Roof Trusses
are 16"
on center.**



**Floor is Tubular
Aluminum Framed
& Insulated**

**Every Sidewall Opening
is framed with tubular aluminum.**

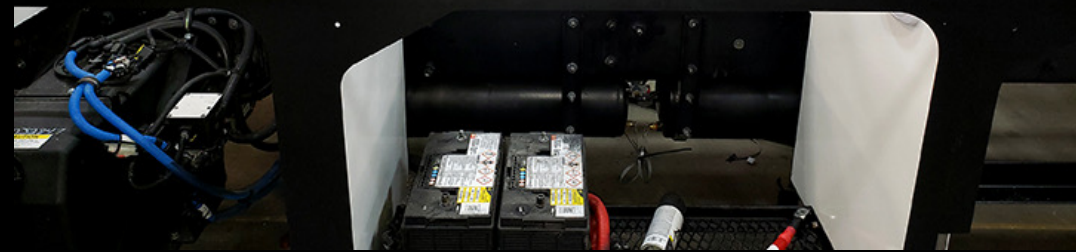


WAKARUSA COACH CO.

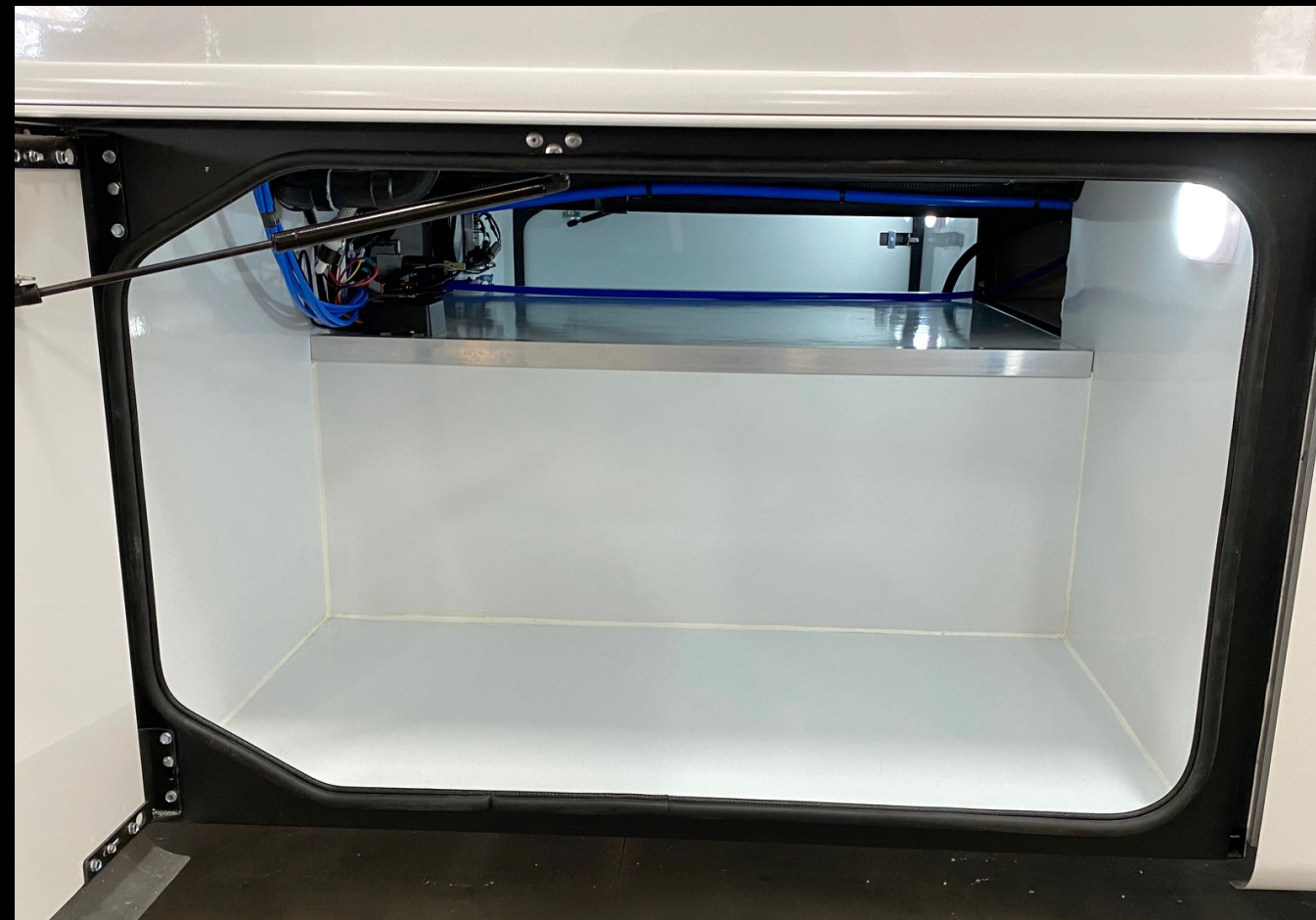


WAKARUSA COACH CO.

Featuring the Strongest Sub-Floor Support System in the Industry.



**Laminated and Insulated
Storage Compartments**



**Resulting in Larger, Cleaner,
Pass-Through Storage Areas**



**Strong Tubular Aluminum
Constructed & Insulated Floor
w/Nearly Seamless Decking**



WAKARUSA COACH CO.

Strong Tubular Aluminum Constructed Sidewalls – Look at All that Strength!



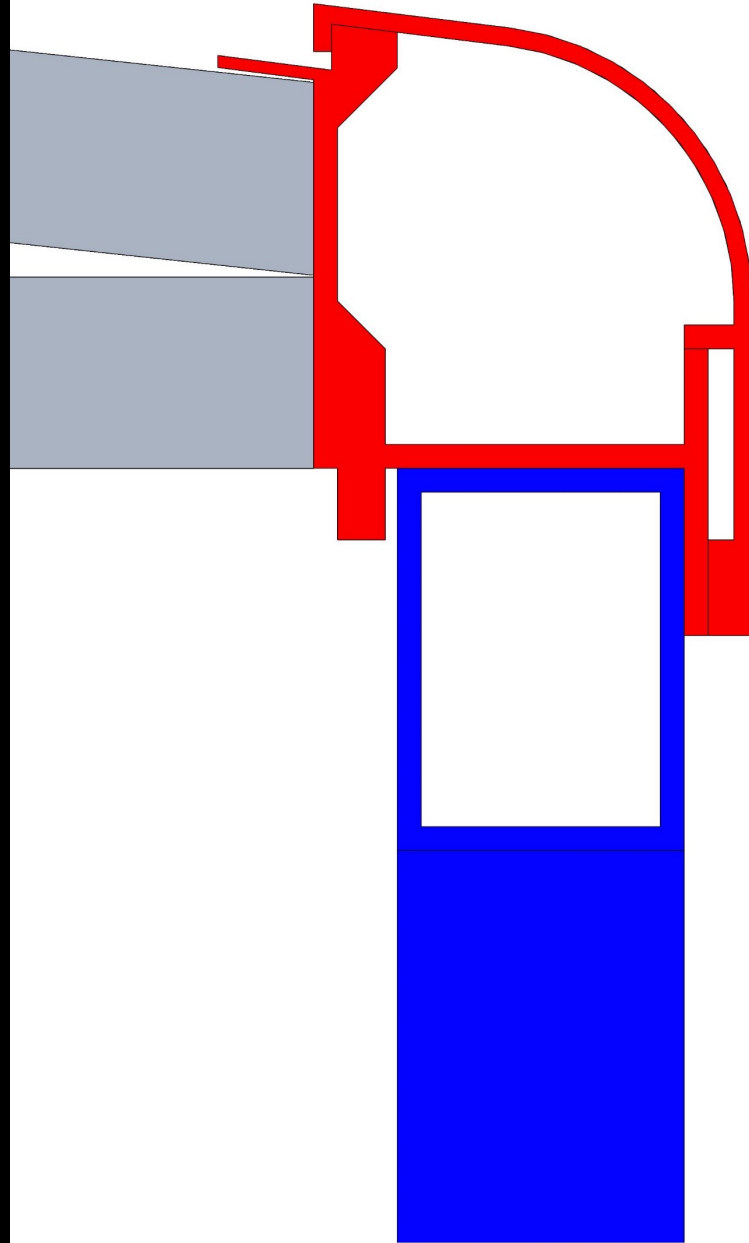
**Strong Tubular Aluminum Constructed
Roof with Trusses Every 16"!**



**Look at the Strength of Just a
Single WCC Roof Truss!**



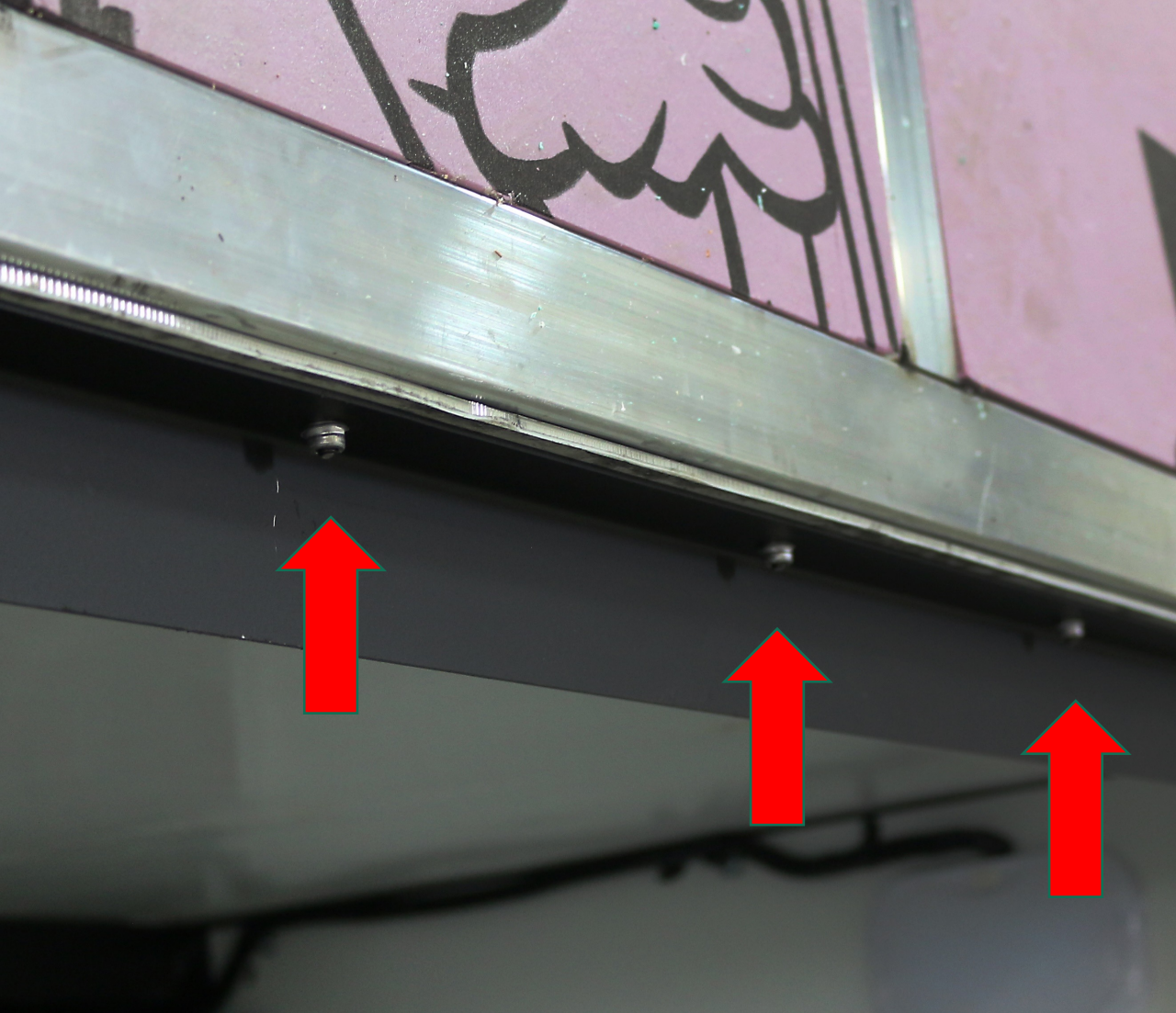
WAKARUSA COACH CO.



**WCC's Exclusive
Roof to Sidewall
Transition System
Provides
Maximum
Strength,
Space for Wire
Runs, and
Accommodates
Easy Water
Run-Off.**



**We are the Only Company to Utilize
Huck Fasteners to Secure the Roof
Structure to the Walls**



As Well As Using Huck Fasteners to Secure the Sidewalls to the Floor



**The Strongest
Smoothest
Walls in the
Industry!**



**1/4" Thick Crane Composite
Fiberglass Wall – No Luan Wood!**



WAKARUSA COACH CO.

**COMMERCIAL-GRADE
MOTORCOACH SHELLS**

Vs. the Industry “Standard”...



**Typical
Consumer Grade
RV steps**

**WCC's
Heavy Duty
Commercial
Grade
Step
System**



**Worthy of Supporting
Thousands of Patients.**





**Typical RV
Quality Door**

**Heavy Duty
Commercial
Grade
Door**

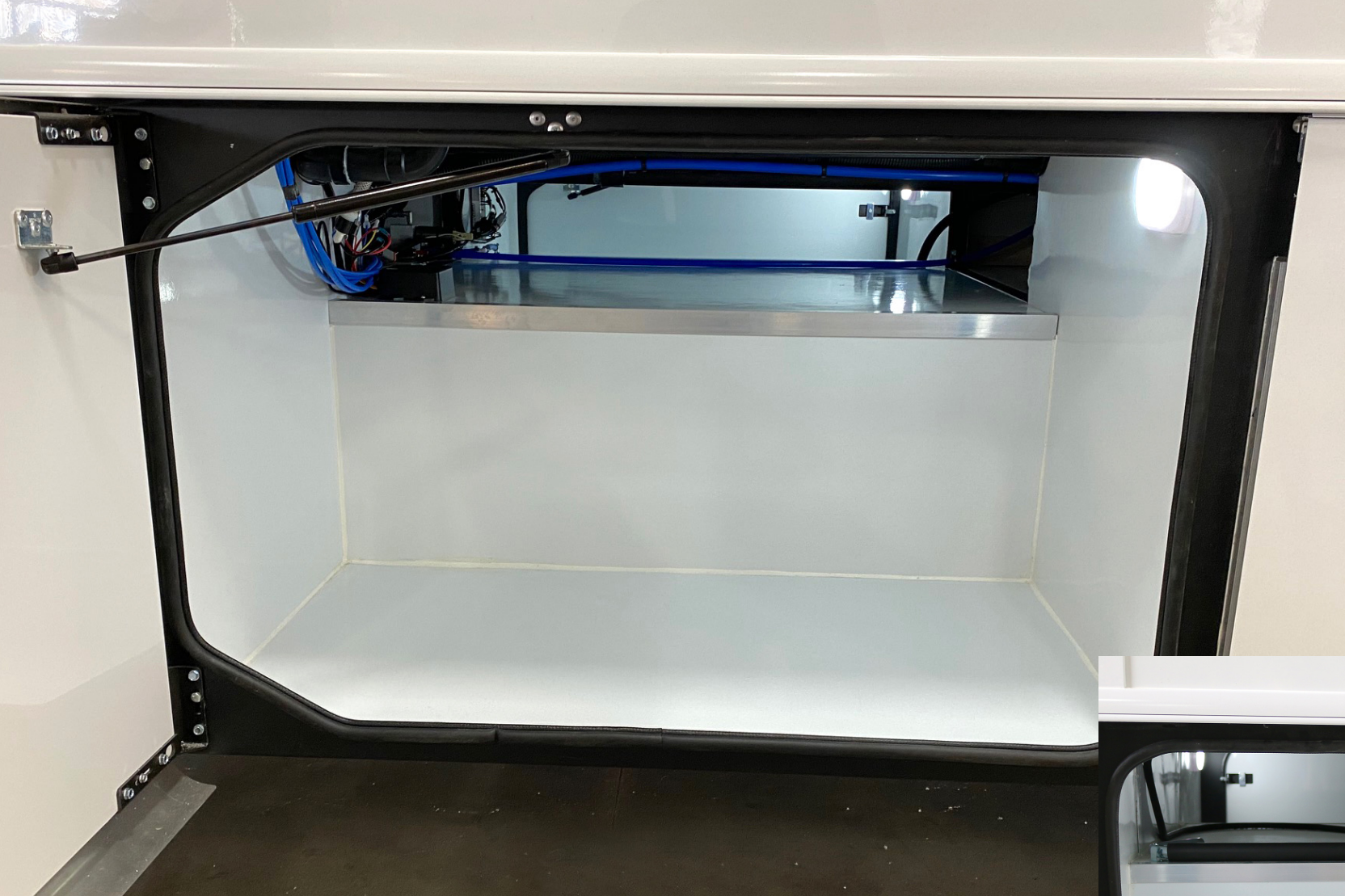


WAKARUSA COACH CO.





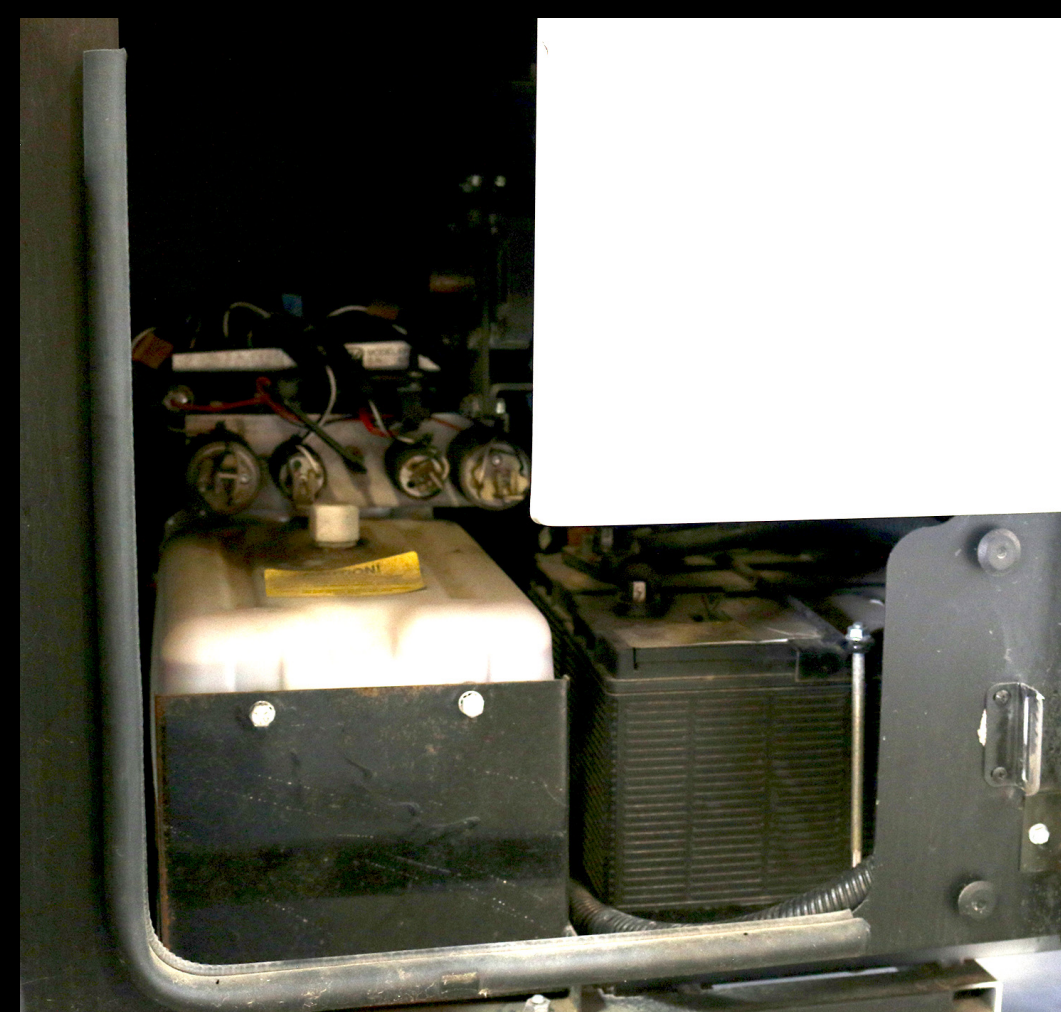
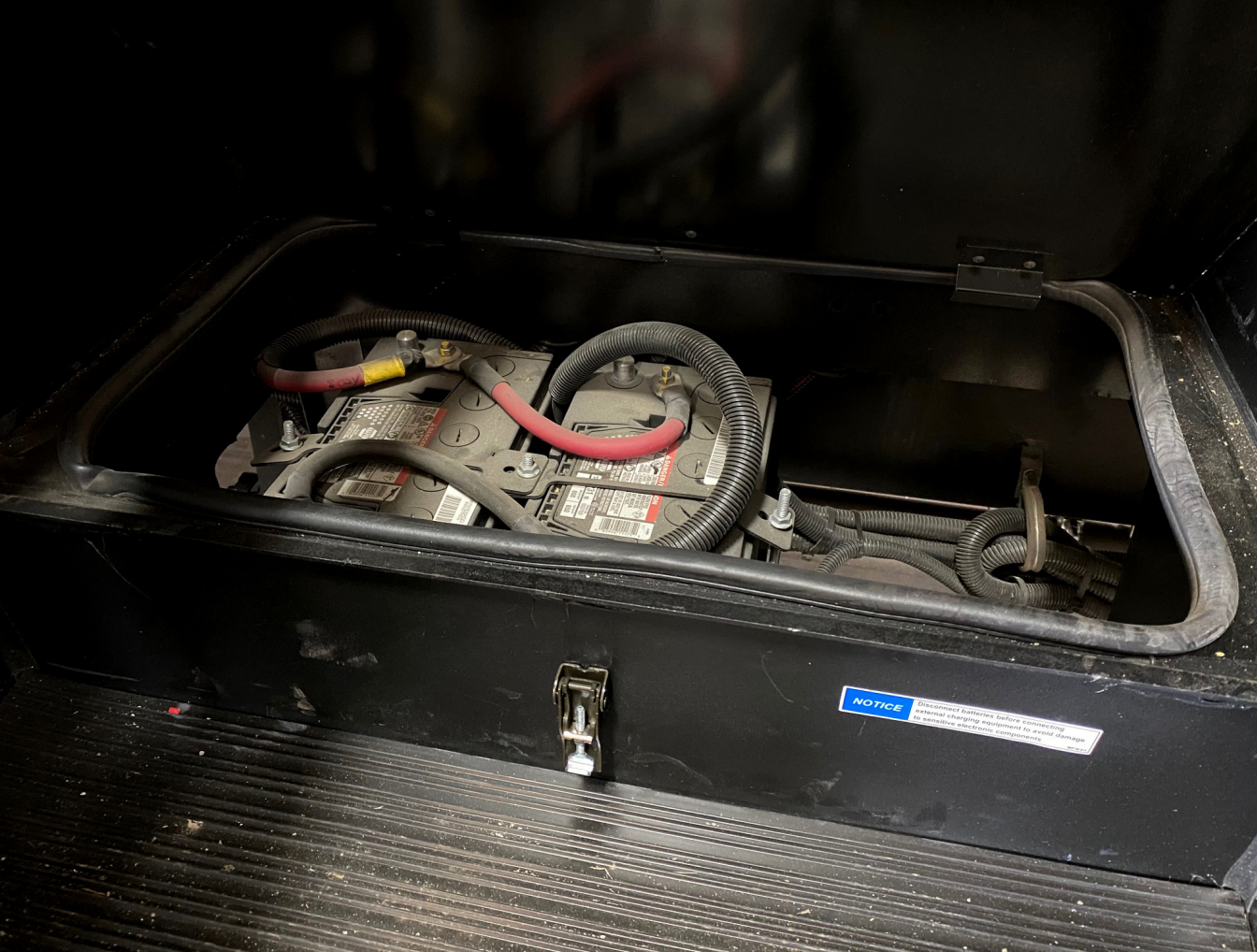
**Typical Smaller,
Metal Box Storage
Compartments with
No Insulation**



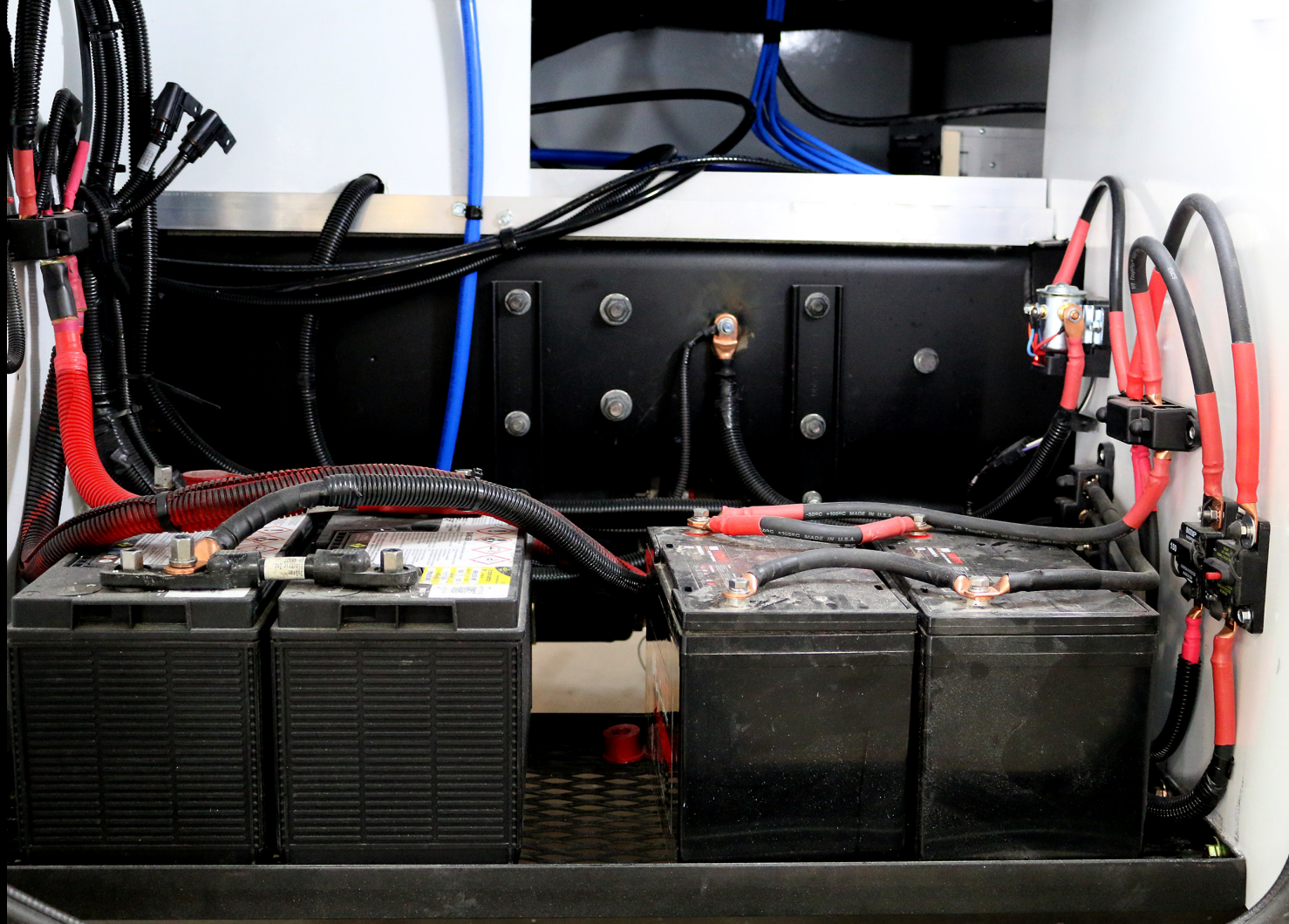
**Vs. Large, Clean,
Insulated,
And Well-Lit
Storage
Compartments**



WAKARUSA COACH CO.



Typical RV Construction Places Some Batteries Under the Entry Step, Some in the Underbelly – Making it More Difficult to Access and Service



**Vs. Easy to Access,
Well Organized,
Clean, and Insulated
Battery
Compartment –
Housing ALL the
Coach's Batteries**



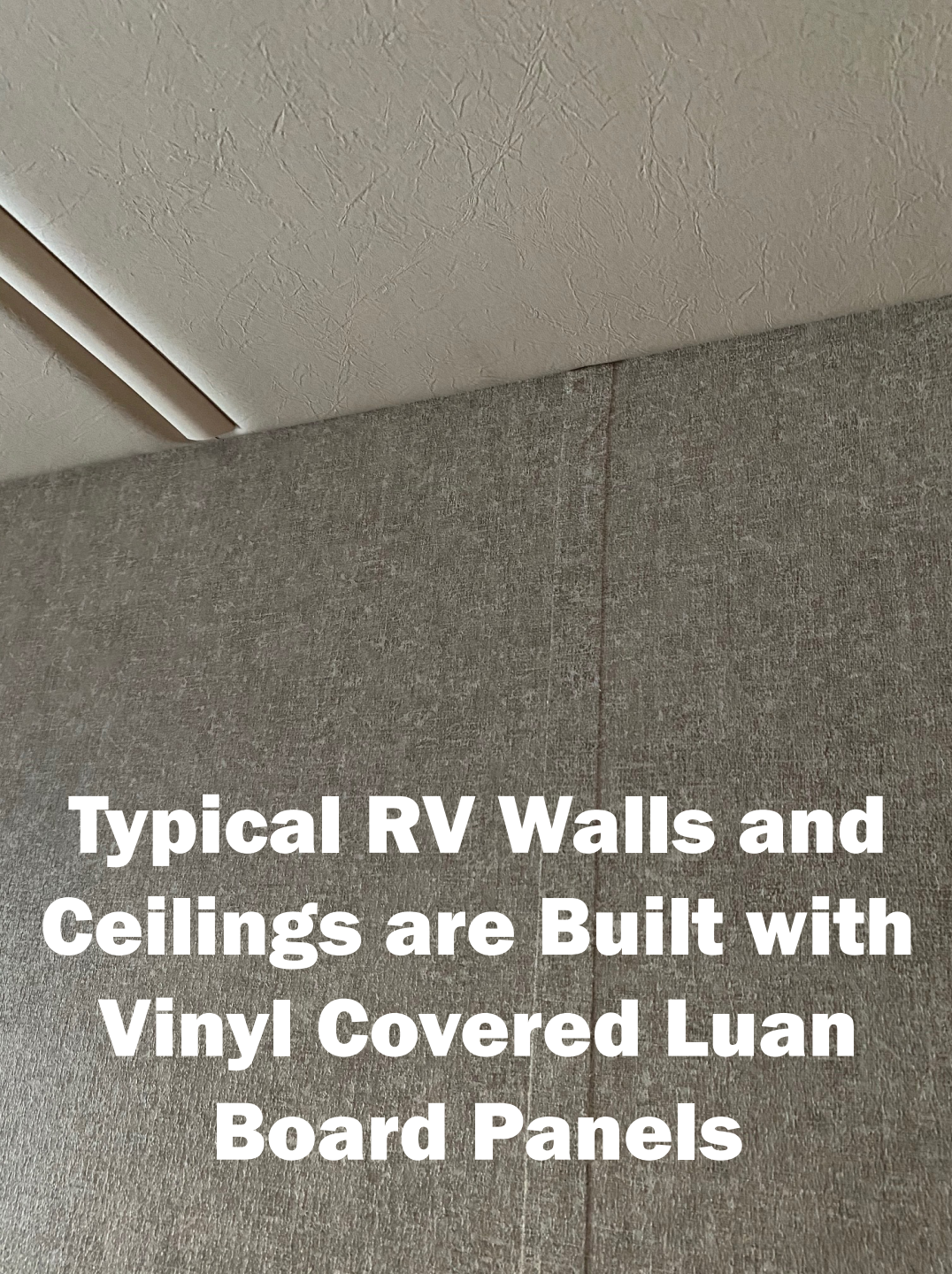
WAKARUSA COACH CO.



**True One-Piece,
Full Fiberglass
Front Cap Design
with Windshield
Embedded into the
Cap Design,
Supported by Steel
Structure**



WAKARUSA COACH CO.



**Typical RV Walls and
Ceilings are Built with
Vinyl Covered Luan
Board Panels**



**With Seams Every 4' on the
Walls and Ceiling**



**Vs. Only One Seam on the Ceiling and
Seamless Fiberglass Interior Walls.**



WAKARUSA COACH CO.

**Sound Deadening
Thermal Foil
Insulation Around
Every Generator
is Standard**



**Heavy Duty HWH
Jacks are Standard**

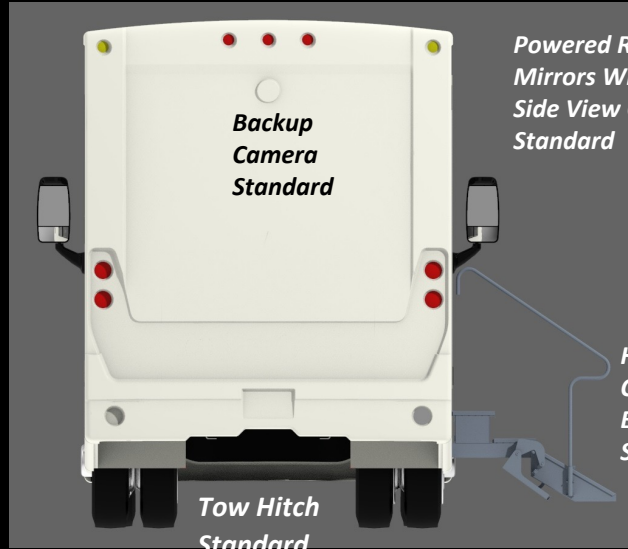


**Radiused Edges on the Interior
– No Hard Corners**





COMMERCIAL-GRADE MOTORCOACH SHELLS

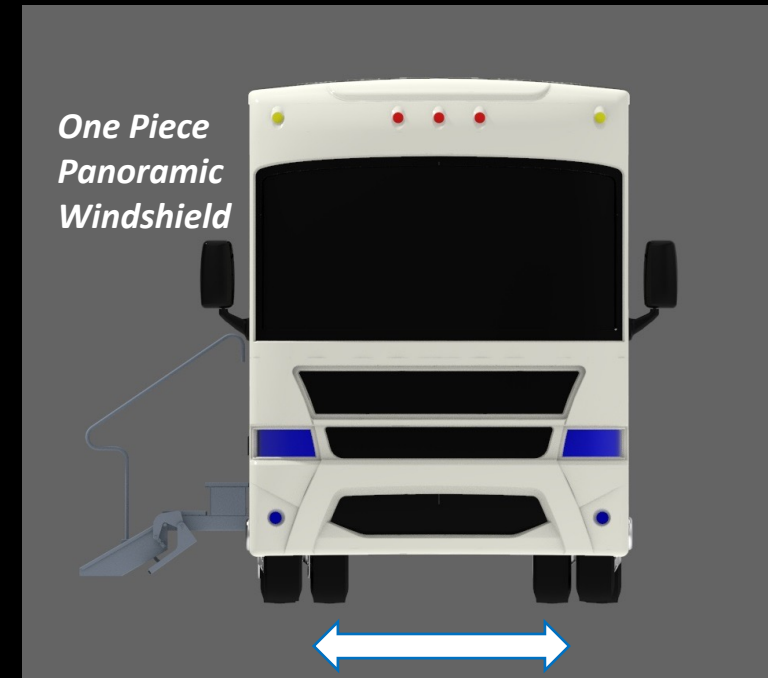


Powered Remote
Mirrors With
Side View Cameras
Standard

Backup
Camera
Standard

Tow Hitch
Standard

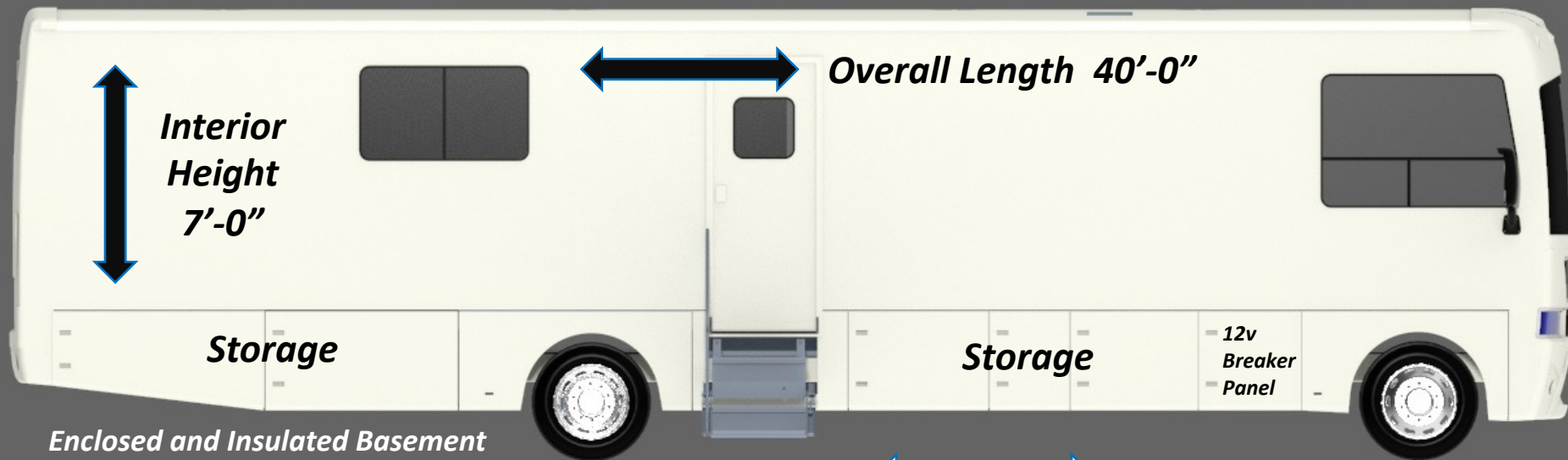
Heavy Duty
Commercial
Entry Steps
Standard



One Piece
Panoramic
Windshield

Overall Body Width 8'-6"

Wakarusa Coach Company reserves the right to modify the features without notice. Features may vary depending on options and/or floor plan chosen.



Interior
Height
7'-0"

Overall Length 40'-0"

Storage

Storage

12v
Breaker
Panel

Enclosed and Insulated Basement

Overall
Height
W/O
AC Units
11'-8"

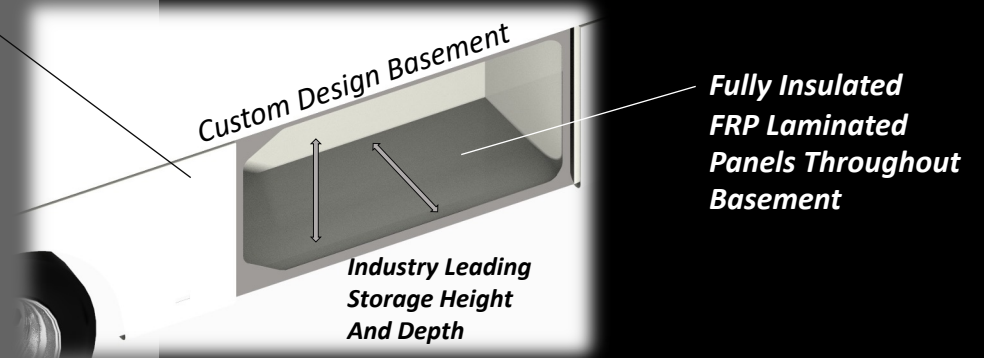
254" Wheelbase

COMMERCIAL-GRADE MOTORCOACH SHELLS

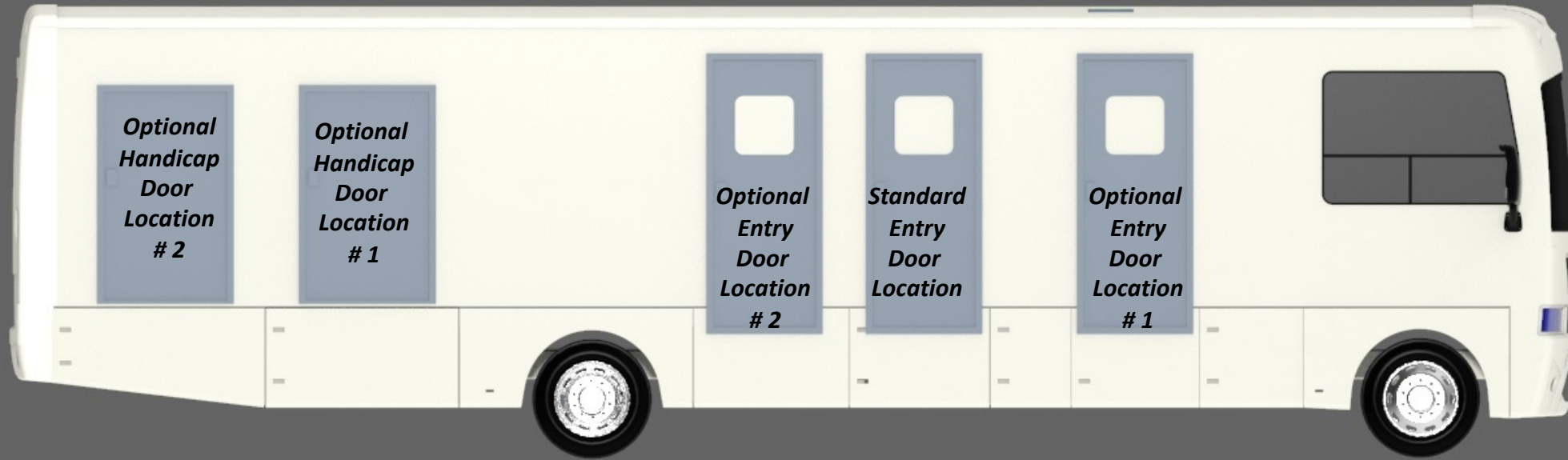


FEATURES & OPTIONS

- Smooth Finish Seamless Interior Sidewalls
- Seamless Floor Covering , Loncoin II Flecks With Coin Embossed Surface
- Padded Vinyl Ceiling – Mostly Seamless With One Center Joint
- Roof AC 's and Vent Fans
- Hospital Grade HEPA Style AC Filters, Offset to Reduce Ambient Interior Noise Level
- Roof Mounted AC with Ducted Venting Throughout With Adjustable Vents
- Dimmable LED Lighting
- Heated Basement
- LED Scene Lights



NUMEROUS ENTRY DOOR LOCATION OPTIONS



NUMEROUS SLIDE ROOM OPTIONS



Dual Seals
Outer and Inner

Up to Four Slide Rooms
With any Combination

Room Lengths Widths
Range From 5' - 12'

Custom Slide Room Sizes Available

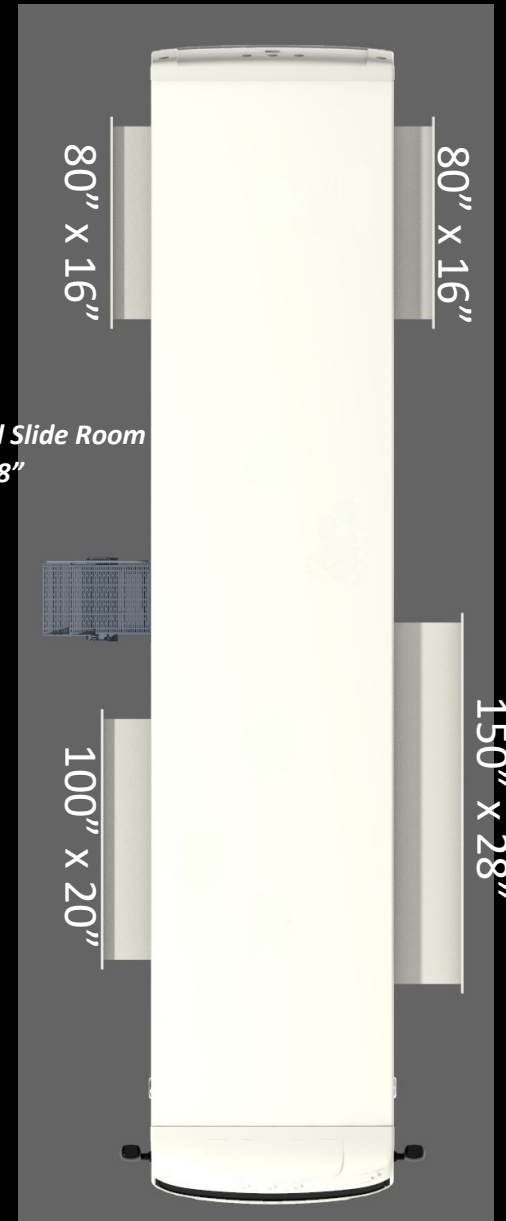
Optional
Door
Location
#2

Room Stroke
Range From
12" - 30"

Custom Designed
Catch Pan To
Channel Water
Outside

HWH Hydraulic
Room Slide
Mechanisms

Standard Slide Room Sizes (Overall Width X Stroke Length)



80" X 16"

80" X 16"

Standard Slide Room
Height 78"

100" X 20"

150" X 28"





WAKARUSA COACH CO.

VEHICLE SPECIFICATIONS

Overall Dimensions

Weight Ratings

Length:	40'	26,000 lbs.
Wheelbase:	254"	Gross Vehicle Weight Ratings: / 27,500 lbs
Height with A/C:	12-6"	Gross Combined Weight Rating: 30,000 lbs.
Width:	102"	Gross Front Axle Weight Rating: 10,000 lbs.
Interior Height:	84"	Gross Rear Axle Weight Rating: 17,500 lbs.
Interior Width:	96"	



Chassis: Freightliner, MC Front Engine - FRED

Engine: Cummins ISB 6.7-340 340 HP @ 2800 RPM

Transmission: Allison 2200 MH Automatic Transmission With Park Pawl

Front Suspension: Hendrickson Airtek 10,000# **Front Air Suspension**

Rear Suspension: Airliner 18,000# **Rear Air Suspension**

Brake System: **Air Brake Package**

Fuel Tank: 80 Gallon/303 Liter Rectangular Steel Fuel Tank

DEF Tank: 10 Gallon, LH Frame MTD

Front Wheels: 22.5x8.25 10-Hub Pilot Aluminum Disc Front Wheels

Front Tires: Goodyear G670 Rv Mrt 255/70r22.5

Rear Wheels: 22.5x8.25 Aluminum Outside, Accuride Accu-Lite 50487 Steel Inside

Rear Tires: Goodyear G670 Rv Mrt 255/70r22.5

Batteries: (2) 1300 CCA Chassis Batteries



WAKARUSA COACH CO.

BECAUSE QUALITY MATTERS

For Additional Information Please Contact:

Rodney Lung

(574) 304-9455

rod@wakarusacoach.com