

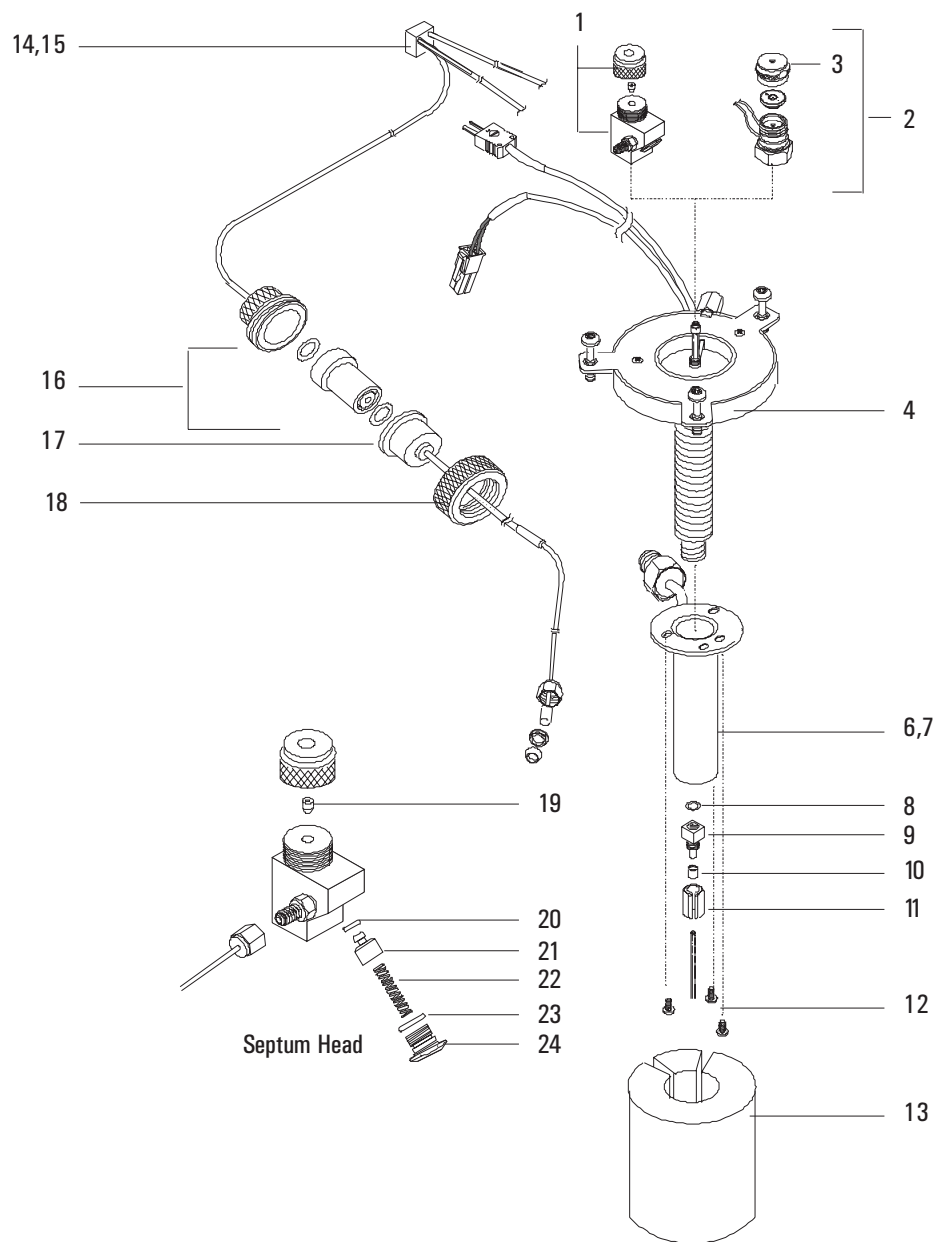
## Programmed Temperature Vaporization Inlet

Description	HP Part No.	Qty.
1. Septumless Head	G2617-60507	1
2. Septum Head*	G2618-80500	1
3. Septum Nut*	18740-60835	1
4. PTV Inlet Assy	G2617-60506	1
5. PTV Cryo Insulator (not shown)	G2617-60510	1
6. PTV LCO <sub>2</sub> Cooling jacket	G2617-60508	1
7. PTV LN <sub>2</sub> Cooling jacket	G2619-60501	1
8. Silver Seal (5/pk)	5182-9763	1
9. Graphpack Inlet Adapter		1
0.2 mm Column ID	5182-9754	
0.25–0.33 mm Column ID	5182-9761	
0.53 mm Column ID	5182-9762	
10. Ferrules for Graphpack Inlet		1
0.2 mm Column ID (10/pk)	5182-9756	
0.25 mm Column ID (10/pk)	5182-9768	
0.32 mm Column ID (10/pk)	5182-9769	
0.53 mm Column ID (10/pk)	5182-9770	
11. Split Nut for Inlet Adapters	5062-3525	1
12. Screws, M3 x 0.5 x 3 mm		3
13. PTV Insulation Block	G2617-20510	1
14. PTV Septumless Gang Weldment	G2617-80500	1
15. PTV Septum Gang FTG Weldment	G2618-80500	1
16. Replacement Filter Kit	G1544-80530	1
17. PTV Front Tap Assy	G2617-80520	1
18. Tap Nut	G1544-20650	1
19. Teflon Ferrule (needle seal)	5182-9748	1
20. Kalrez Seal**	5182-9759	1
21. Valve Body**	5182-9757	1
22. Pressure Spring**	5182-9758	1
23. Viton Seal	5182-9775	1
24. Sealing Element	5182-9760	1

\*See the Consumables Catalog for Merlin assemblies

\*\*Service kit, HP Part No. 5182-9747, consists of items 20, 21, and 22.

---

**Programmed Temperature Vaporization Inlet**


**Figure 1310-11 Exploded diagram of the programmed temperature vaporization inlet**