

Valve Box Assembly

Description	HP Part No.	Qty.
1. Screw, M4 x 8 mm, Torx T20, chromeplated	0515-2711	6
2. Valve Box Cover	G1580-00030	1
3. Valve Box Insulation, Top	G1580-00050	1
4. Insulation Retainer Plate	G1580-00040	1
5. Hex Nut, Insulation Plate	0535-0025	2
6. Screw, M3 x 30 mm, Torx T10, Chromeplated htr (blk)	0515-2525	4
7. Heater Block	G1580-20520	2
8. Standoff, Valve Box	G1580-20500	2
9. Valve Box Bottom Plate	G1580-00010	1
10. Screw, M3 x 8 mm, Torx T10, Chromeplated	0515-2726	2
11. Heater/Sensor Harness Cable Clamp	1400-0015	2
12. Heater/Sensor Assembly	G1580-61140	2
13. Cable-Tie Strap (not shown)	1400-0249	4

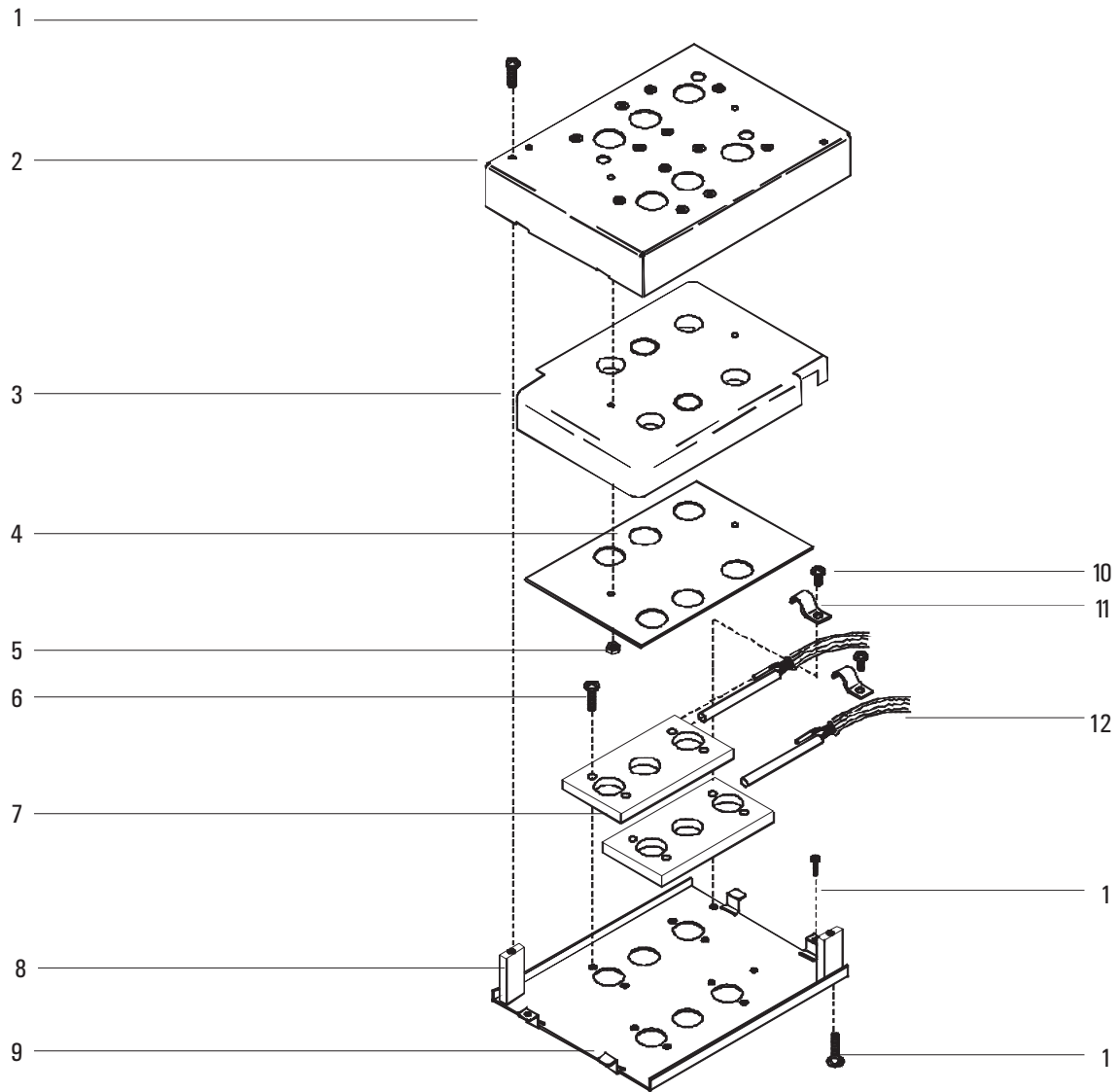


Figure 1350-1 Valve Box Assembly