

Item	Description	HP Part No.	Qty.
1	Screw, Machine, M4 x 0.7 x 6	0515- 0915	2
2	EPC Flow Bracket	19245- 00070	1
3	Nut, Hex with Lock Washer	0535- 0043	4
4	Screw, Thread Cutting	0624- 0665	1
5	Plug 1/8- inch	19361- 20770	1
6	Nut, Hex, 5/16	2950- 0203	1
7	EPC Sensor Board	19245- 60020	1
8	Screw, Machine M3 x 0.5 x 8	0515- 0912	2
9	M8 Swagelok Plastic Cap, 1/8- inch	05890- 40230	2
10	O- ring	0905- 1174	6
11	PCOC Purge Restrictor Assembly	19245- 80530	1
12	Vent Torque Plate	19244- 00030	1
13	O- ring, 0.239 id	0905- 1014	2
14	PPIP High Pressure Restrictor (red/blue)	19243- 60560	1
15	Screw, Machine, M4 x 0.7 x 12	0515- 0909	4
16	Valve Transducer Brazement	19245- 80540	1
17	Fitting Housing	19245- 20750	1
18	Screw, Machine, M4 x 0.7 x 8	0515- 0910	5
19	Sealing Plate	19245- 00140	1
20	PCOC Proportional Control Valve	19245- 60540	1
21	FID Air Restrictor (brown)	19231- 60610	1
22	PCOC Inlet Brazement	19245- 80580	1
23	Inlet Bypass Clamp	19245- 20890	1
24	Interface Cable	19245- 60700	1
25	PCOC Purge Regulator	19245- 60530	1

Figure 6. PCOC Electronic Pressure Control (Sheet 1 of 2).

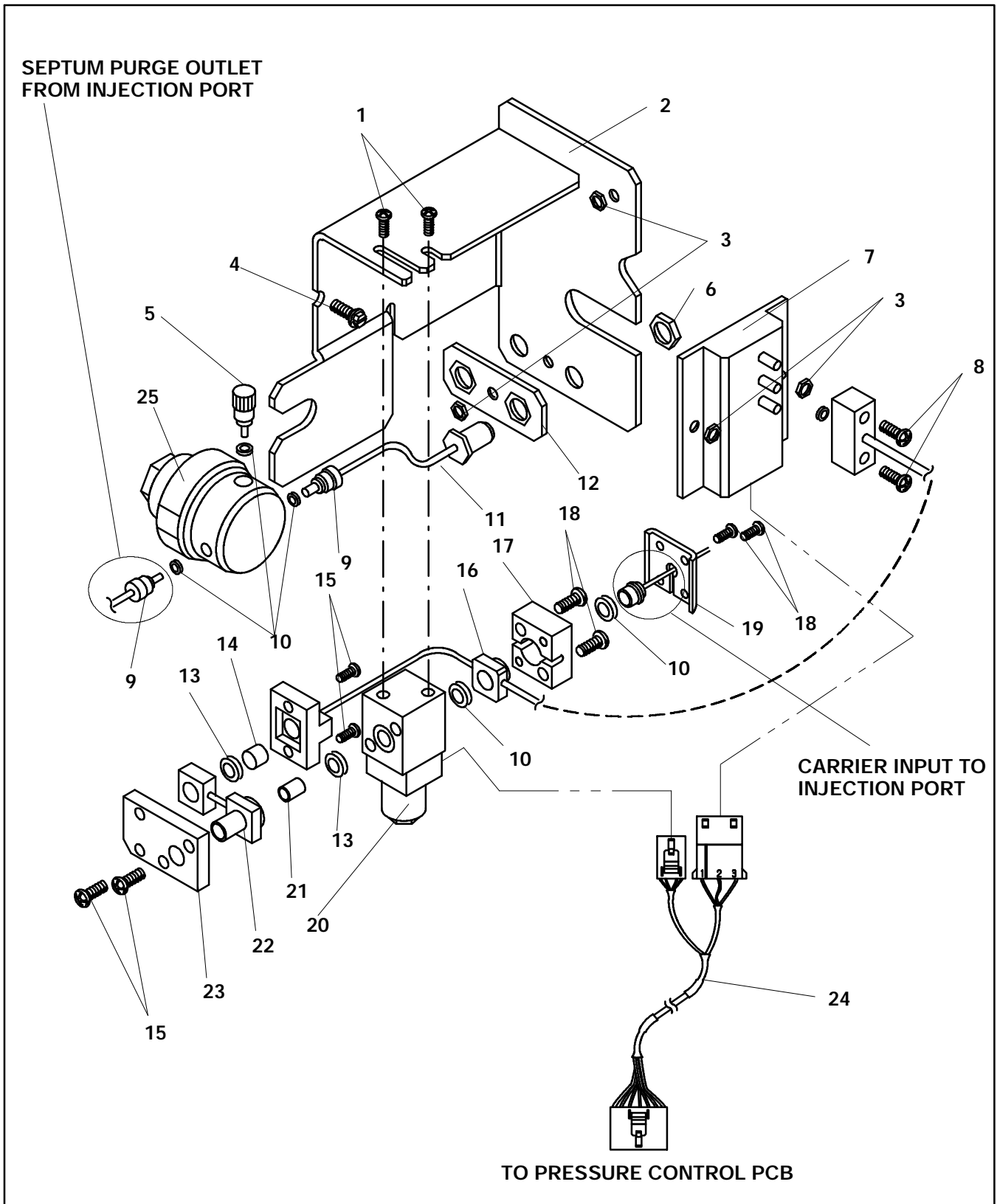


Figure 6. PCOC Electronic Pressure Control (Sheet 2 of 2).