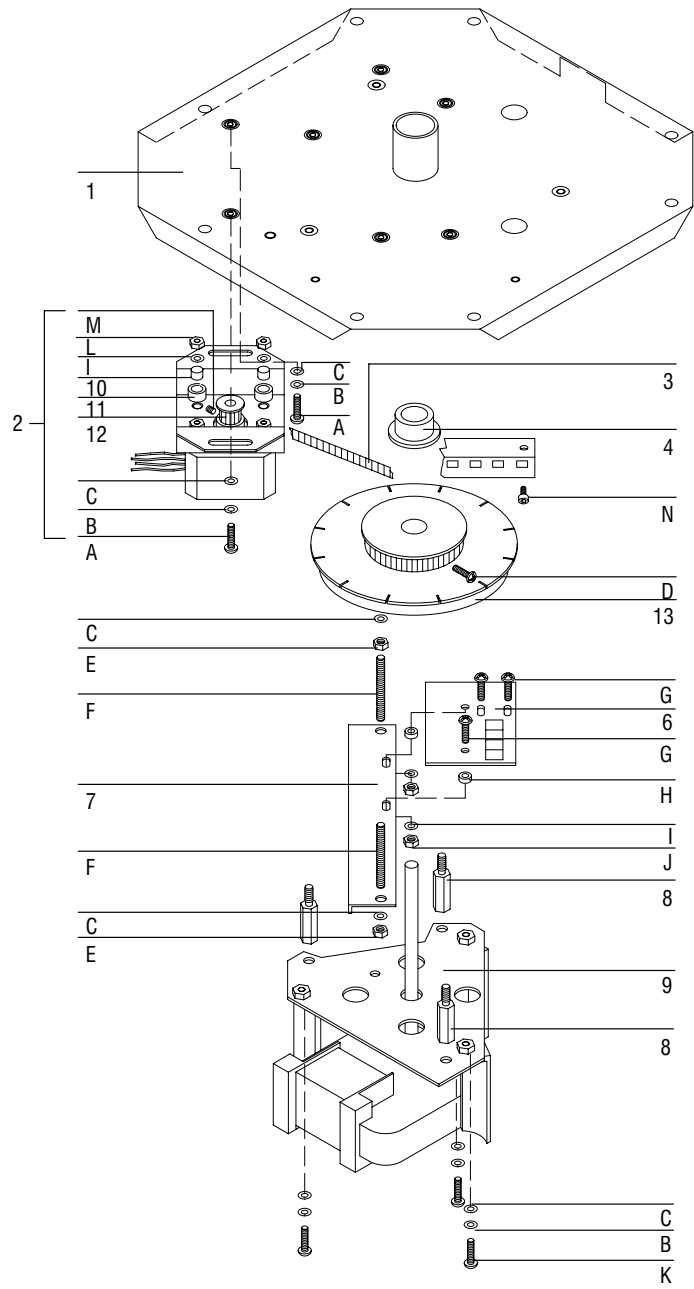


---

## 7694 Carousel Bottom Subassemblies

	<b>Description</b>	<b>HP Part No.</b>	<b>Qty</b>
1	Plate, carousel	301 -1 28-HSP	1
2	Carousel motor assembly	425-025-HSP	1
3	Belt, carousel motor	301 -008-HSP	1
4	Bush, lower carousel	301 -048-HSP	1
5	Wheel, encoder	641 -0090060-HSP	1
6	PCB ID-optical encoder	41 5-305-HSP	1
7	Plate, encoder	301 -1 25-HSP	1
8	Spacer, blower	301 -046-HSP	1
9	Fan motor assembly	425-220-HSP	1
1 0	Spacer, stepper	301 -097-HSP	2
1 1	Standoff, rubber	300-596-HSP	1
1 2	Wheel, motor carousel	301 -051 -HSP	1
1 3	Disk, identification	641 -0090060-HSP	1
<b>Associated screws, washers, and nuts</b>			
A	Screw, M4 X 1 2 pan head	051 5-0909	2
B	Washer, toothed D4	21 90-0640	5
C	Washer, flat D4	3050-0893	7
D	Screw, M4 X 1 2 socket head cap	300-828-HSP	1
E	Nut, M40535-0006	2	
F	Rod, Threaded M4 X 45	301 -1 06-HSP	2
G	Screw, M3 X 1 0 pan head	051 5-0925	3
H	Spacer, D7 X D3 X 2.5 PVC	300-41 5-HSP	2
I	Washer, flat D3	3050-0891	2
J	Nut, M30535-0004	2	
K	Screw, M4 X 1 6 pan head	051 5-0983	3
L	Nut, M3 lock	0535-0031	2
M	Setscrew, M3 X 6	051 5-0863	1
N	Screw, socket head M3 X 1 6	051 5-1 424	1

---



**Figure 6-9.** Exploding the Bottom of the Carousel