

Volatiles Interface

Description	HP Part No.	Qty.
1. VI Top cover	G2319-00020	1
2. Top insulation	G2319-20580	1
3. Screw, M4 x 12	1390-1023	4
4. Clamping plate	G2319-20540	1
5. Volatiles Interface	G2319-60505	1
NS Ferrule, 1/16-inch, (10/pk)	0100-1333	
NS Blanking nut 1/16-inch SS	01080-83202	
NS Male nut, 1/16-inch	0100-0929	
6. VI Heater/Sensor assy	G2319-60503	1
7. Heater block	G2319-60504	1
8. VI insulation htr block	G2319-20530	1
9. Pneumatic gang fitting assy	G2319-60501	1
Contains:		
Gen. make-up restrictor	19243-60540	1
O-ring	0905-1014	1
torx screw	1390-1024	2
Replacement filter kit	G1544-80530	—
or		
10. Filter trap assy (not shown)	G2319-80530	1
11. RP Filter	G1544-80530	2/pk
12. Nut, male 1/16 in. swage	0100-0829	3
13. Vol. front trap assy	G2319-80530	1
14. Trap Nut	G1544-20650	1

*Also refer to the *Analytical Columns and Supplies Catalog*.

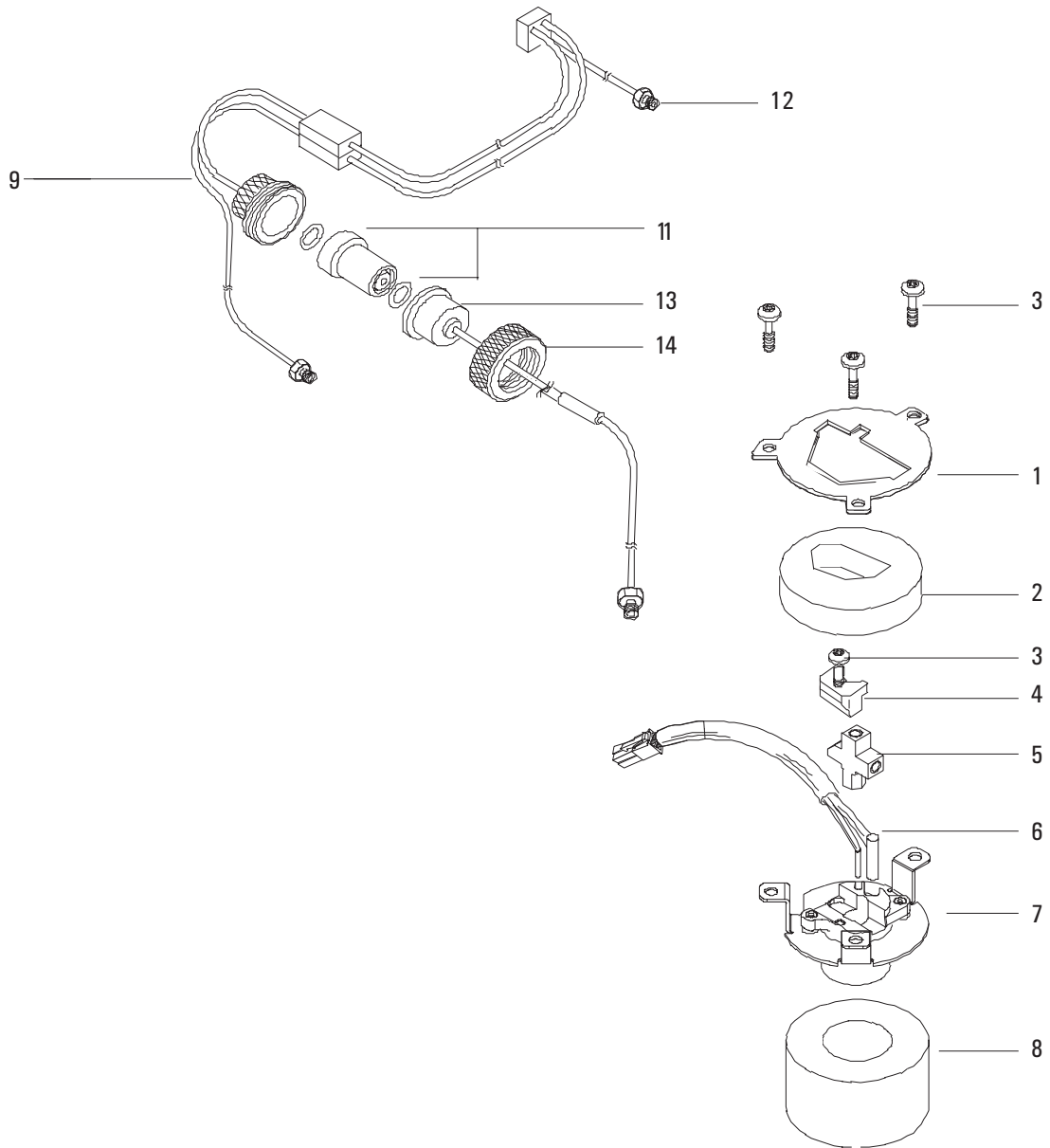


Figure 1310-15 PTV manifold assembly 0-100 psig