

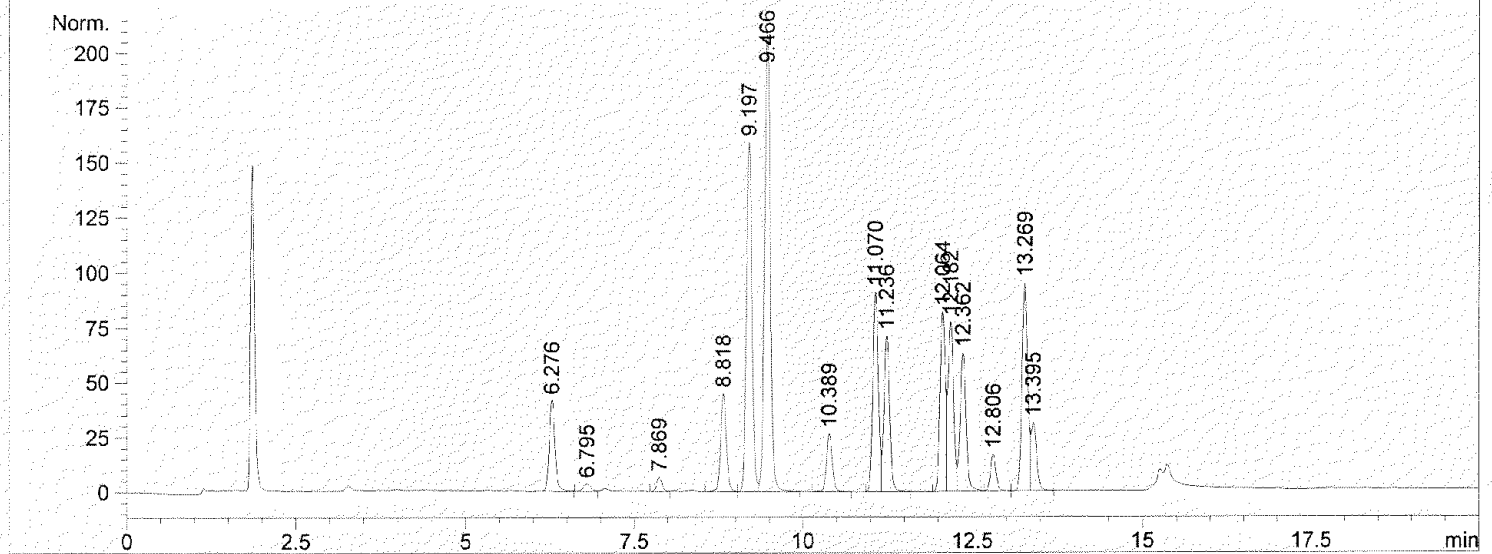
```

=====
Injection Date   : 5/25/2007 8:02:39 PM          Seq. Line   :    2
Sample Name     : pah mix                        Location    : Vial 11
Acq. Operator  :                               Inj         :    1
Acq. Instrument : Instrument 1                  Inj Volume  : 50 µl
Acq. Method    : C:\HPCHEM\1\METHODS\AIR.M
Last changed   : 5/25/2007 7:18:20 PM
Analysis Method : C:\HPCHEM\1\METHODS\1050QUAT.M
Last changed   : 5/25/2007 2:09:08 PM by M. FAUGHT
                (modified after loading)

```

Test Method for Quality Labs 1050 Quat. pump

VWD1 A, Wavelength=254 nm (G:\BIOMED\011-0201.D)



=====
Area Percent Report
=====

```

Sorted By       :      Signal
Multiplier     :      1.0000
Dilution       :      1.0000
Use Multiplier & Dilution Factor with ISTDs

```

Signal 1: VWD1 A, Wavelength=254 nm

Peak #	RetTime [min]	Type	Width [min]	Area [mAU*s]	Height [mAU]	Area %
1	6.276	BB	0.0898	245.14917	41.56837	4.1579
2	6.795	BV	0.1308	29.26901	3.49083	0.4964
3	7.869	VV	0.0892	37.64564	6.53424	0.6385
4	8.818	VV	0.0903	261.52209	44.67698	4.4356
5	9.197	VV	0.0889	911.77698	159.01923	15.4645
6	9.466	VB	0.0902	1222.69934	209.07370	20.7380
7	10.389	VB	0.0925	159.05797	26.32212	2.6978
8	11.070	BV	0.0877	512.06244	90.88782	8.6850
9	11.236	VB	0.0892	415.75000	71.10822	7.0515
10	12.064	BV	0.0847	453.59564	81.72905	7.6934
11	12.182	VV	0.0853	440.00140	77.42130	7.4628
12	12.362	VV	0.0929	383.00455	63.02319	6.4961
13	12.806	VV	0.0878	94.56906	16.51880	1.6040
14	13.269	VV	0.0906	556.86310	94.73257	9.4449
15	13.395	VB	0.0833	172.95746	30.92311	2.9335

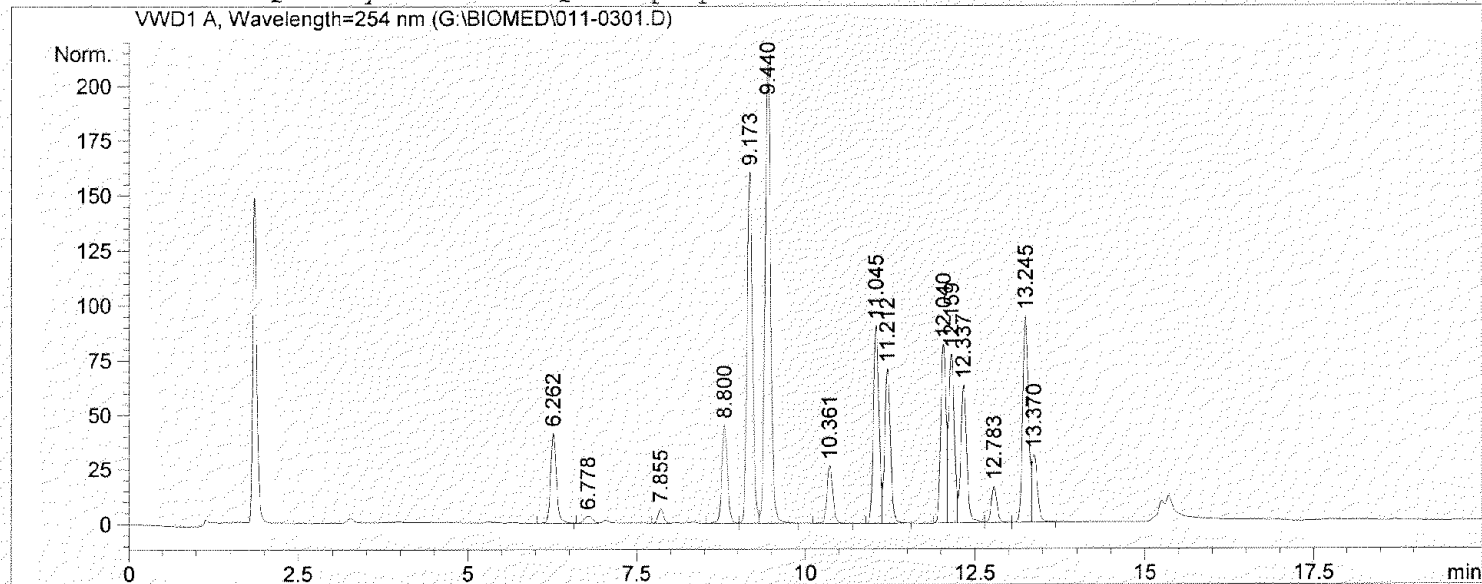
Totals : 5895.92385 1017.02952

Results obtained with enhanced integrator!

```

=====
Injection Date   : 5/25/2007 8:28:37 PM      Seq. Line   :    3
Sample Name     : pah mix                    Location    : Vial 11
Acq. Operator   :                          Inj         :    1
Acq. Instrument : Instrument 1                Inj Volume  : 50 µl
Acq. Method     : C:\HPCHEM\1\METHODS\AIR.M
Last changed    : 5/25/2007 7:18:20 PM
Analysis Method : C:\HPCHEM\1\METHODS\1050QUAT.M
Last changed    : 5/25/2007 2:09:08 PM by M. FAUGHT
                  (modified after loading)
Test Method for Quality Labs 1050 Quat. pump
=====

```



```

=====
                          Area Percent Report
=====

```

```

Sorted By           :      Signal
Multiplier          :      1.0000
Dilution            :      1.0000
Use Multiplier & Dilution Factor with ISTDs

```

Signal 1: WVD1 A, Wavelength=254 nm

Peak #	RetTime [min]	Type	Width [min]	Area [mAU*s]	Height [mAU]	Area %
1	6.262	BB	0.0907	244.96051	41.62813	4.1633
2	6.778	BV	0.1434	30.12883	3.30284	0.5121
3	7.855	VV	0.0895	37.88599	6.54671	0.6439
4	8.800	VV	0.0885	261.82739	45.27578	4.4499
5	9.173	VV	0.0872	909.82904	160.30458	15.4631
6	9.440	VB	0.0898	1218.24390	209.53534	20.7048
7	10.361	VP	0.0936	158.93840	26.26373	2.7013
8	11.045	PV	0.0880	510.85056	90.30553	8.6822
9	11.212	VB	0.0896	414.95569	70.59709	7.0524
10	12.040	BV	0.0846	452.86200	81.75910	7.6967
11	12.159	VV	0.0862	438.79071	77.36868	7.4575
12	12.337	VV	0.0928	381.93082	62.93256	6.4912
13	12.783	VP	0.0877	94.29626	16.48287	1.6026
14	13.245	VV	0.0899	556.72052	94.24776	9.4618
15	13.370	VB	0.0840	171.63789	30.80775	2.9171

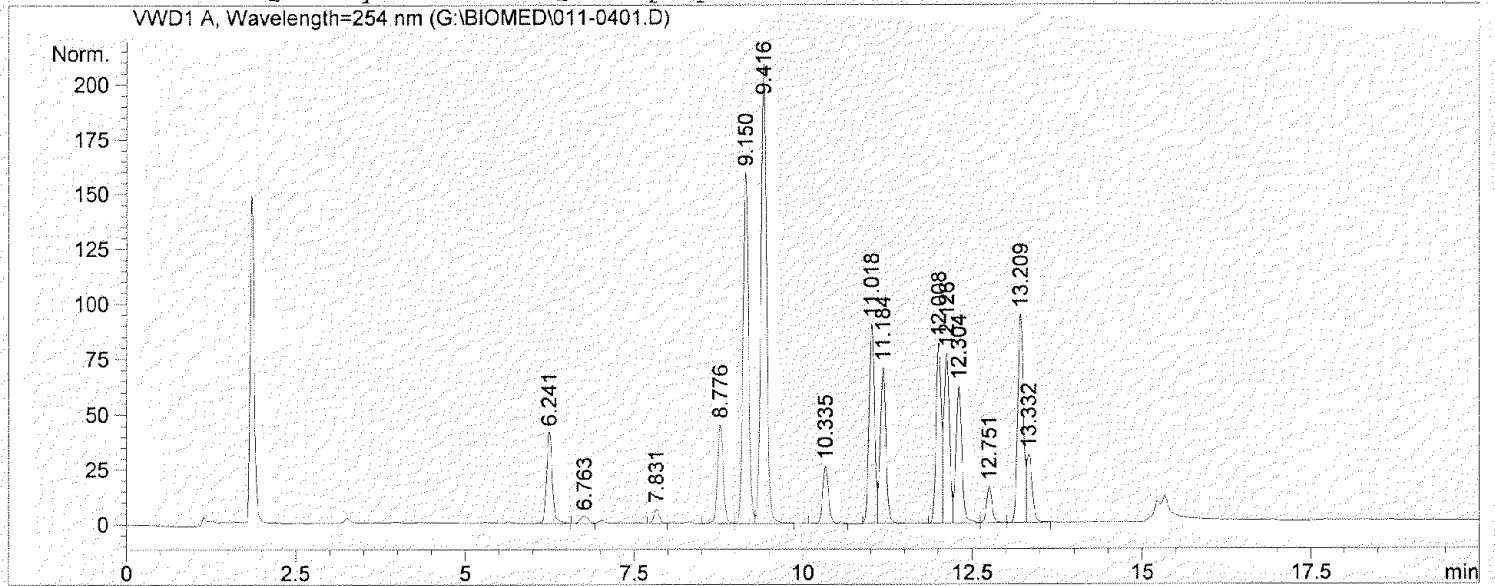
Totals : 5883.85851 1017.35844

Results obtained with enhanced integrator!

```

=====
Injection Date   : 5/25/2007 8:54:34 PM      Seq. Line   :    4
Sample Name     : pah mix                    Location    : Vial 11
Acq. Operator  :                            Inj         :    1
Acq. Instrument : Instrument 1               Inj Volume  : 50 µl
Acq. Method    : C:\HPCHEM\1\METHODS\AIR.M
Last changed   : 5/25/2007 7:18:20 PM
Analysis Method : C:\HPCHEM\1\METHODS\1050QUAT.M
Last changed   : 5/25/2007 2:09:08 PM by M. FAUGHT
                (modified after loading)
Test Method for Quality Labs 1050 Quat. pump
=====

```



```

=====
                          Area Percent Report
=====

```

```

Sorted By           :      Signal
Multiplier          :      1.0000
Dilution            :      1.0000
Use Multiplier & Dilution Factor with ISTDs

```

Signal 1: VWD1 A, Wavelength=254 nm

Peak #	RetTime [min]	Type	Width [min]	Area [mAU*s]	Height [mAU]	Area %
1	6.241	BB	0.0893	244.61465	41.75765	4.1727
2	6.763	BV	0.1464	30.97913	3.33537	0.5285
3	7.831	VV	0.0885	37.77689	6.53078	0.6444
4	8.776	VV	0.0896	261.53470	45.11869	4.4613
5	9.150	VV	0.0882	906.48749	159.65343	15.4631
6	9.416	VB	0.0897	1213.22314	208.97346	20.6955
7	10.335	VB	0.0926	158.60402	26.21289	2.7055
8	11.018	BV	0.0866	509.30191	90.51275	8.6878
9	11.184	VB	0.0902	413.27261	70.73765	7.0497
10	12.008	BV	0.0833	451.31995	81.86633	7.6987
11	12.126	VV	0.0851	436.57266	77.08603	7.4472
12	12.304	VV	0.0930	379.25739	62.33569	6.4695
13	12.751	VP	0.0877	94.07906	16.46035	1.6048
14	13.209	VV	0.0905	554.43878	94.44932	9.4578
15	13.332	VB	0.0833	170.78914	30.99302	2.9134

Totals : 5862.25153 1016.02340

Results obtained with enhanced integrator!

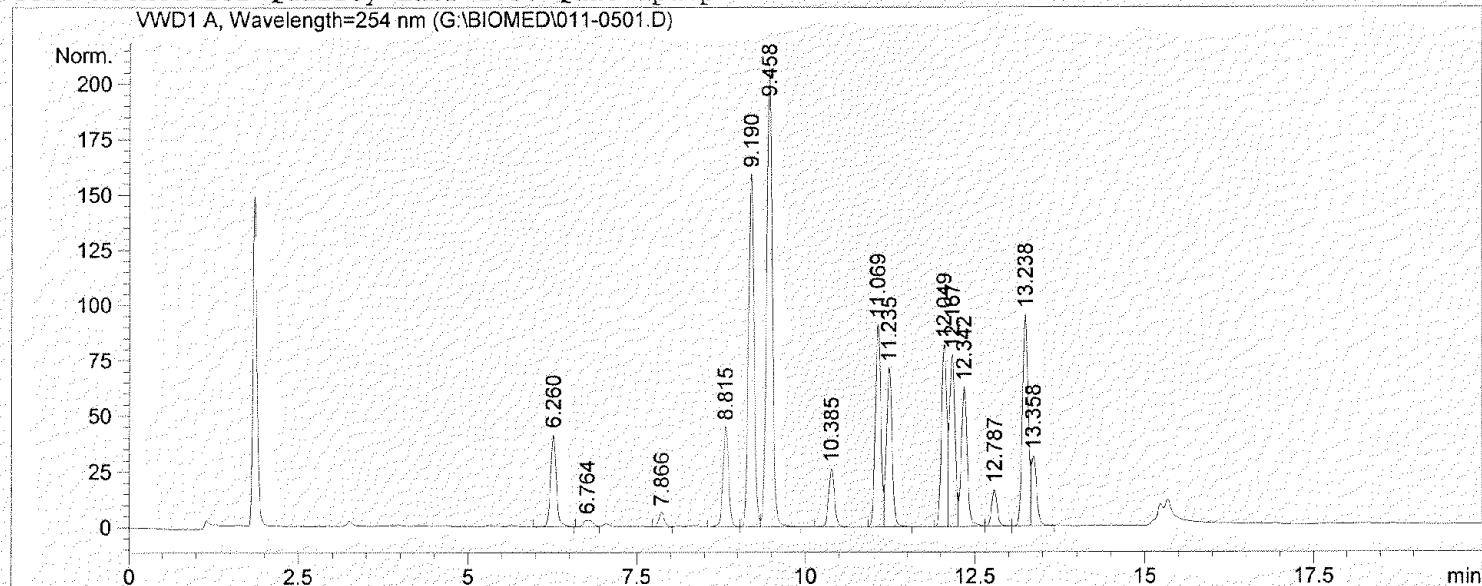
```

=====
Injection Date   : 5/25/2007 9:20:31 PM      Seq. Line   :    5
Sample Name     : pah mix                    Location    : Vial 11
Acq. Operator   :                          Inj         :    1
Acq. Instrument : Instrument 1                Inj Volume  : 50 µl
Acq. Method     : C:\HPCHEM\1\METHODS\AIR.M
Last changed    : 5/25/2007 7:18:20 PM
Analysis Method : C:\HPCHEM\1\METHODS\1050QUAT.M
Last changed    : 5/25/2007 2:09:08 PM by M. FAUGHT
                  (modified after loading)

```

Test Method for Quality Labs 1050 Quat. pump

VWD1 A, Wavelength=254 nm (G:\BIOMED\011-0501.D)



=====
Area Percent Report
=====

```

Sorted By       :      Signal
Multiplier     :      1.0000
Dilution       :      1.0000
Use Multiplier & Dilution Factor with ISTDs

```

Signal 1: VWD1 A, Wavelength=254 nm

Peak #	RetTime [min]	Type	Width [min]	Area [mAU*s]	Height [mAU]	Area %
1	6.260	VB	0.0899	244.74814	41.44663	4.1745
2	6.764	BV	0.1372	30.82042	2.99050	0.5257
3	7.866	VV	0.0898	38.26694	6.58837	0.6527
4	8.815	VV	0.0897	261.13492	44.98597	4.4540
5	9.190	VV	0.0874	907.53162	159.55301	15.4793
6	9.458	VB	0.0900	1212.18896	207.91745	20.6756
7	10.385	VP	0.0937	158.25748	26.12255	2.6993
8	11.069	BV	0.0873	509.81140	91.11488	8.6956
9	11.235	VB	0.0895	413.69711	71.46873	7.0562
10	12.049	BV	0.0841	451.78049	82.17265	7.7058
11	12.167	VV	0.0858	436.86438	77.49501	7.4513
12	12.342	VV	0.0923	378.31531	62.75549	6.4527
13	12.787	VP	0.0869	93.64910	16.58283	1.5973
14	13.238	VV	0.0890	555.94653	95.42845	9.4825
15	13.358	VB	0.0811	169.87808	31.42476	2.8975

Totals : 5862.89088 1018.04728

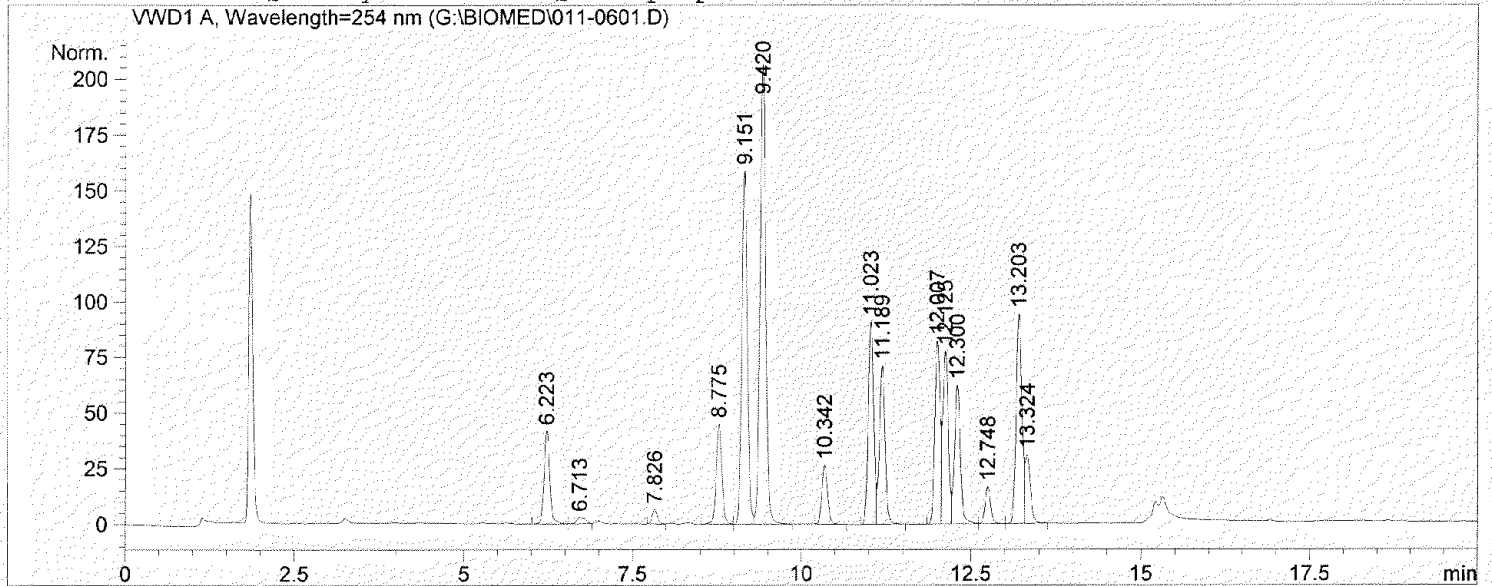
Results obtained with enhanced integrator!
=====

```

=====
Injection Date   : 5/25/2007 9:46:28 PM      Seq. Line   :    6
Sample Name     : pah mix                    Location    : Vial 11
Acq. Operator  :                            Inj         :    1
Acq. Instrument : Instrument 1                Inj Volume  : 50 µl
Acq. Method    : C:\HPCHEM\1\METHODS\AIR.M
Last changed   : 5/25/2007 7:18:20 PM
Analysis Method : C:\HPCHEM\1\METHODS\1050QUAT.M
Last changed   : 5/25/2007 2:09:08 PM by M. FAUGHT
                  (modified after loading)

```

Test Method for Quality Labs 1050 Quat. pump



=====
Area Percent Report
=====

```

Sorted By       :      Signal
Multiplier     :      1.0000
Dilution       :      1.0000
Use Multiplier & Dilution Factor with ISTDs

```

Signal 1: VWD1 A, Wavelength=254 nm

Peak #	RetTime [min]	Type	Width [min]	Area [mAU*s]	Height [mAU]	Area %
1	6.223	BB	0.0889	243.48903	41.83971	4.1575
2	6.713	BV	0.1367	28.54020	2.85359	0.4873
3	7.826	BV	0.0881	36.40295	6.42226	0.6216
4	8.775	VV	0.0898	261.68463	45.04971	4.4682
5	9.151	VV	0.0887	907.47498	158.74696	15.4950
6	9.420	VB	0.0914	1211.90857	206.84200	20.6931
7	10.342	VP	0.0917	157.52872	26.38296	2.6898
8	11.023	PV	0.0874	510.32864	90.97308	8.7138
9	11.189	VB	0.0889	413.73157	71.08368	7.0644
10	12.007	BV	0.0831	451.86200	82.27191	7.7155
11	12.125	VV	0.0857	436.81720	77.53026	7.4586
12	12.300	VV	0.0926	377.43134	62.32964	6.4446
13	12.748	VP	0.0874	94.05516	16.52661	1.6060
14	13.203	VV	0.0910	556.51630	94.14865	9.5024
15	13.324	VB	0.0815	168.80179	31.02063	2.8823

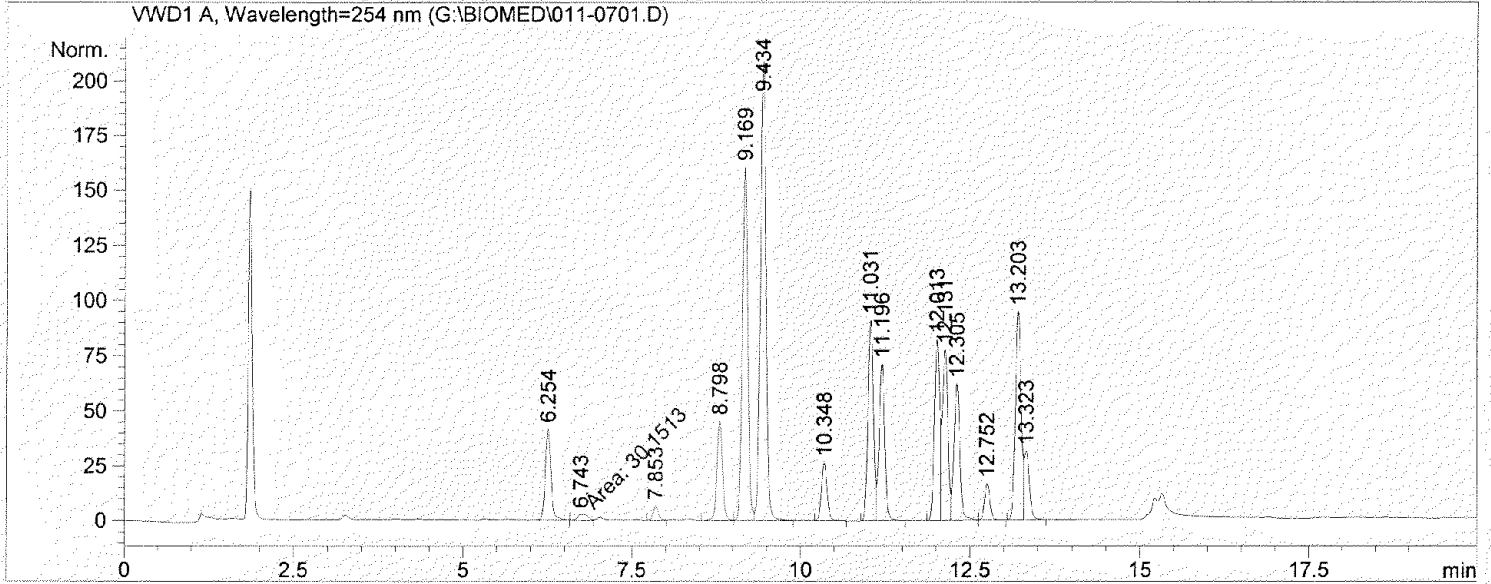
Totals : 5856.57306 1014.02165

Results obtained with enhanced integrator!

=====

```

=====
Injection Date   : 5/25/2007 10:12:25 PM      Seq. Line   :    7
Sample Name     : pah mix                    Location    : Vial 11
Acq. Operator   :                          Inj       :    1
Acq. Instrument : Instrument 1                Inj Volume  : 50 µl
Acq. Method     : C:\HPCHEM\1\METHODS\AIR.M
Last changed    : 5/25/2007 7:18:20 PM
Analysis Method : C:\HPCHEM\1\METHODS\1050QUAT.M
Last changed    : 5/25/2007 2:09:08 PM by M. FAUGHT
                  (modified after loading)
Test Method for Quality Labs 1050 Quat. pump
    
```



Area Percent Report

```

Sorted By      :      Signal
Multiplier     :      1.0000
Dilution       :      1.0000
Use Multiplier & Dilution Factor with ISTDs
    
```

Signal 1: VWD1 A, Wavelength=254 nm

Peak #	RetTime [min]	Type	Width [min]	Area [mAU*s]	Height [mAU]	Area %
1	6.254	BV	0.0891	244.37845	41.88599	4.1754
2	6.743	MM	0.1750	30.15129	2.87118	0.5152
3	7.853	VV	0.0879	37.66322	6.56737	0.6435
4	8.798	VV	0.0882	261.48834	45.37354	4.4677
5	9.169	VV	0.0878	906.99078	160.79745	15.4965
6	9.434	VB	0.0895	1209.82813	209.04254	20.6706
7	10.348	VB	0.0917	157.54111	26.37860	2.6917
8	11.031	BV	0.0863	509.81079	91.13064	8.7104
9	11.196	VB	0.0887	413.31842	71.23206	7.0618
10	12.013	BV	0.0841	451.40784	82.21030	7.7126
11	12.131	VV	0.0857	436.57010	77.55582	7.4591
12	12.305	VV	0.0924	375.39569	62.19689	6.4139
13	12.752	VP	0.0881	93.89523	16.56894	1.6043
14	13.203	BV	0.0906	556.25885	94.66303	9.5040
15	13.323	VB	0.0806	168.18523	31.35162	2.8735

Totals : 5852.88347 1019.82597

Results obtained with enhanced integrator!