

Plastic covers

Description	HP Part No.	Qty.
1. Automated Liquid Sampler Tray Bracket (optional)	18597-60875	1
2. Injection Port Fan Cover	G1530-40200	1
3. Injection Port Top Cover	G1530-40070	1
4. Pneumatics Cover	G1530-40040	1
5. Detector Top Cover*	G1530-40130	1
6. Electronics Top Cover*	G1530-40125	1
7. Left Side Cover	G1530-40050	1
8. Screw, M4 x 12 mm, Torx, F10	1390-1023	10
9. Electronics Side Cover	G1530-40115	1
10. 3-inch Hole Plug	6960-0162	2
11. 1-inch Hole Plug	6960-0163	2
12. 1 1/2-inch Hole Plug	6960-0164	1
13. Circular Plug Label	G1530-90870	4
14. Oval Plug Label	G1530-90880	2
15. Injector Mounting Post (not shown)	07673-21140	1

* Note: If your GC uses a metal hinge for the Detector Top Cover, you must replace item 5 and 6 together. Order kit number G1530-67075. For more information, see *Replacing the Detector Top Cover*.

See also Figure 1320-14 for ordering covers for GCs with 1 (or 2) flame photometric detector(s).

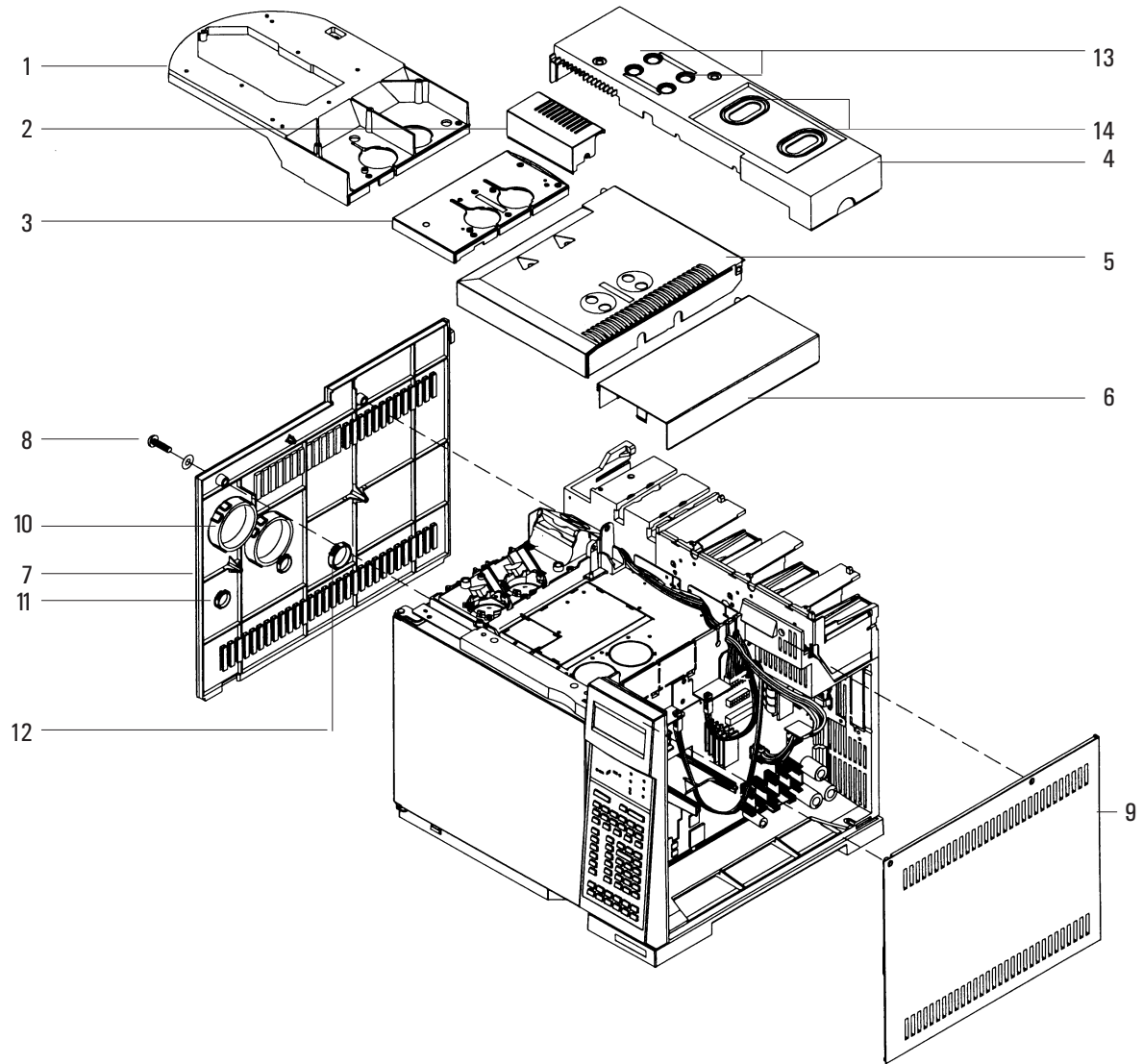


Figure 1330-2 Exploded diagram of the plastic exterior components.