



AGPROprofessionals
DEVELOPERS OF AGRICULTURE

Highway 34 Commercial Lots



\$1,570,965

Comments: Commercial property annexed in the Town of Kersey. Property has frontage on Hwy 34 and the UP Rail line that border the south boundary. 56.8 acres +/-

Legal: Lot B of Recorded Exemption No. 0963-22-2-RE2634, according to the map recorded February 2, 2000 at Reception No. 2747687, being a part of Section 22, Township 5 North, Range 64 West of the 6th P.M. Now known as Commercial lots 1 thru 20, and Out lots N and O, Kohler Farm P.U.D.

Taxes: \$917.06/2022

Water: Town of Kersey taps will be needed

All oil, gas and mineral rights are excluded



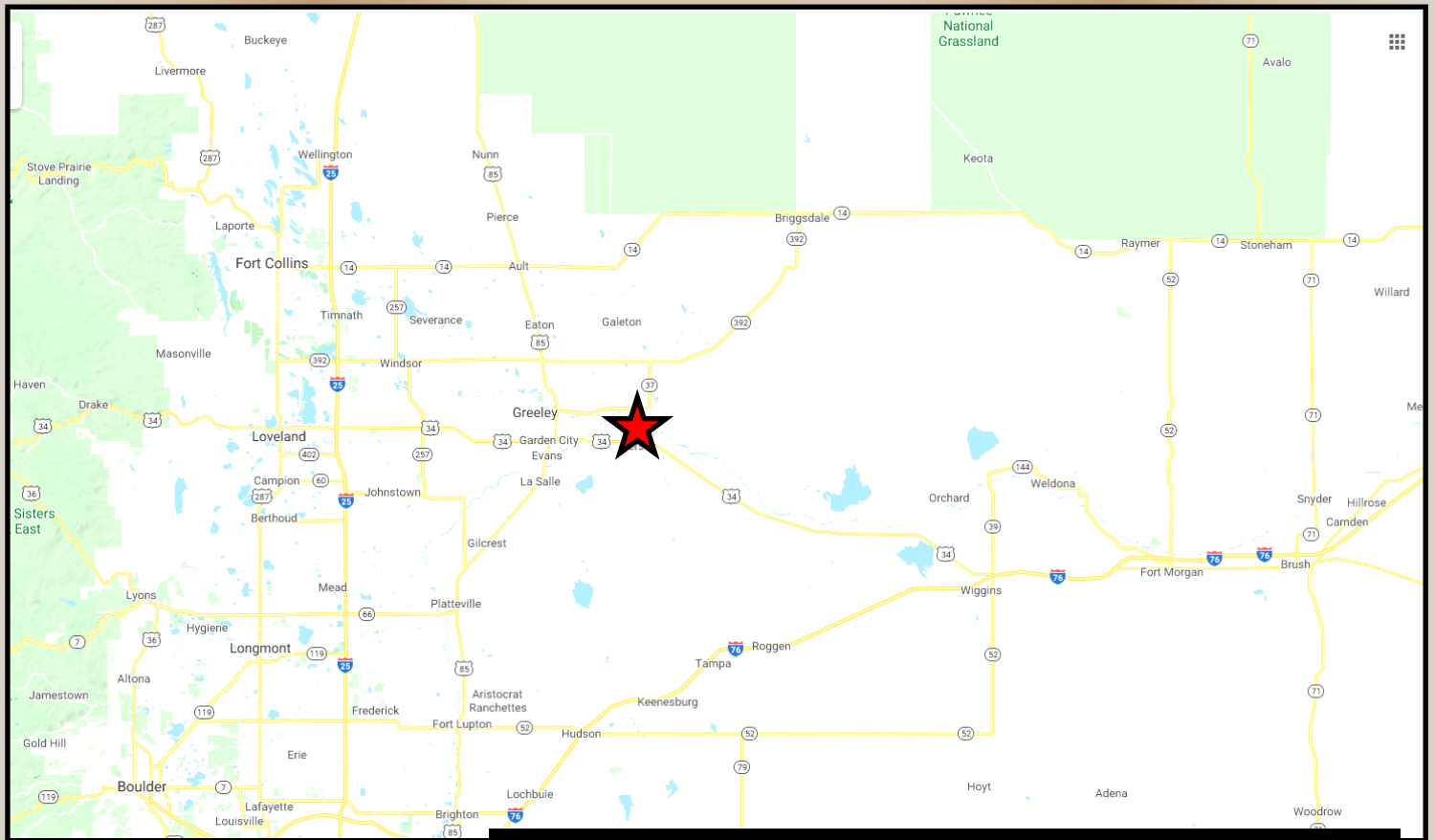
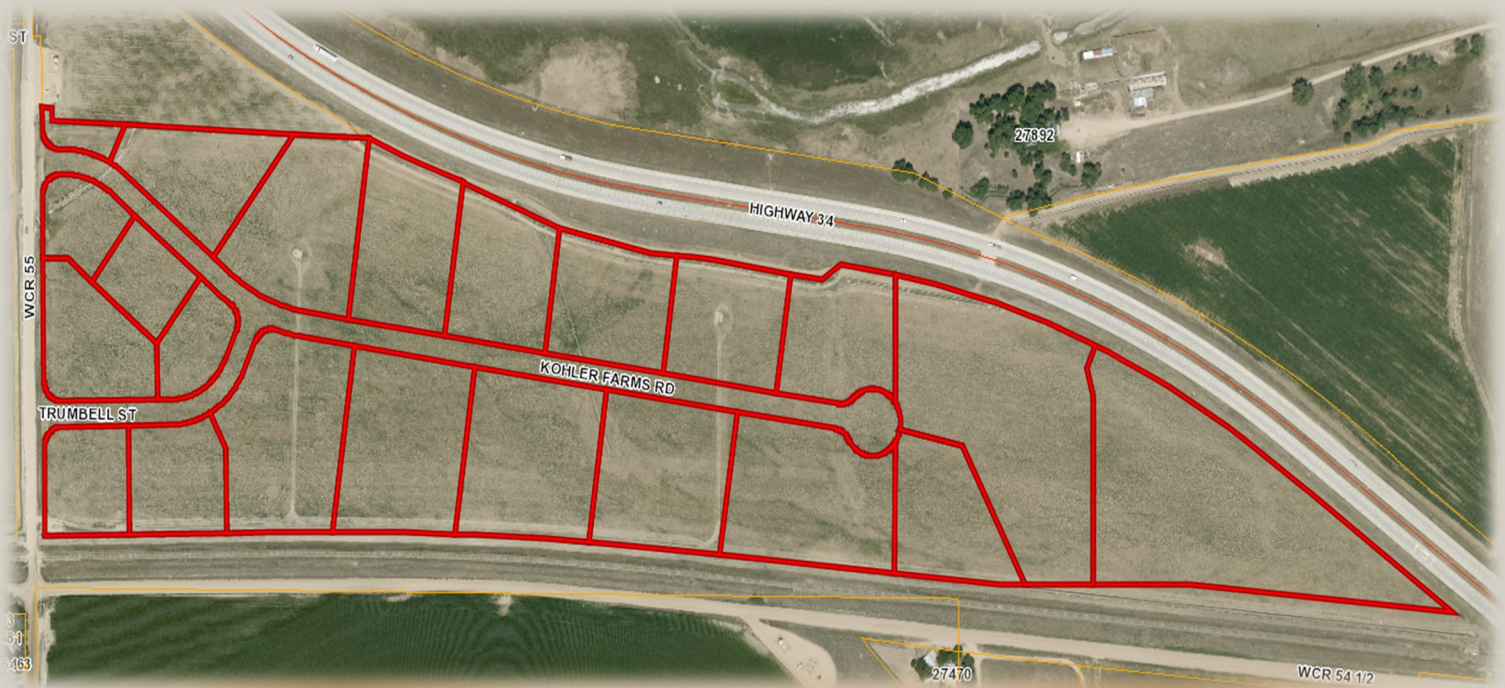
**RYAN
HOSTETLER**

Accredited Land Consultant

AGPROS.COM

3050 67th Avenue, Greeley, CO

303.883.7080 Ryan@Agpros.com



From Hwy 34 east of Greeley, south on 9th Street in Kersey to County Road 55 (Kohler Farms Road)



AGPROprofessionals
DEVELOPERS OF AGRICULTURE



AGPROprofessionals
DEVELOPERS OF AGRICULTURE