

OPEN YOUTH, 4-H, GRANGE and Youth Group Projects

NO ENTRY FEE

NO PREMIUMS - RIBBONS ONLY

JUDGING: Danish, open to the public

!!PLEASE SEE DEPARTMENTAL RULES FOR IMPORTANT ENTRY GUIDELINES!!

GENERAL RULES:

1. All state and local rules apply.
2. Each entry in this department must be made by or produced by the exhibitor
3. Exhibitors are eligible to compete/exhibit through December 31st of the year in which they turn 19 years of age.
4. Open Youth, enter according to grade in school on January 1, 2024, 4-H and Grange should enter according to their organizational guidelines.
5. "Any other" classes are to be used only when a specific class is not offered

OPEN YOUTH GENERAL RULES:

1. Open Youth is an *unaffiliated* designation which is for individuals **not** participating in 4-H/Grange or FFA, or Skills/USA
2. Open to youth at least 3 years of age by January 1, 2024
3. Enter according to grade in school on January 1, 2024
4. Exhibitors are eligible to compete/exhibit through December 31st of the year in which they turn 19 years of age
5. Exhibitors are limited to entries in one level: Beginner, Junior or Senior or by grade level
6. Each entry in these divisions shall have been made by or produced by the exhibitor
7. All entries will be judged by the *Danish* system

"Any other" classes are to be used only when the specific class is not offered



UNIVERSITY OF CALIFORNIA
Agriculture and Natural Resources

4-H GENERAL RULES:

1. All 4-H members must be enrolled in the 4-H project in which they enter
2. 4-H Members must meet 4-H eligibility rules for age and meeting requirements
3. The county 4-H advisor will check all 4-H enrollment lists for eligibility
4. 4-H Division is open to youth who were at least 9 years of age on 12/31/2023
5. 4-H exhibitors are limited to entries in one level: Junior, Intermediate or Senior

GRANGE GENERAL RULES:



1. All Grange youth members must be in good standing
2. Grange Division is open to youth at least 5 years of age or in Kindergarten by January 1, 2024
3. Exhibitors are eligible to compete/exhibit through December 31st of the year they turn 19 years of age
4. Grange members must meet Grange eligibility rules for age and meeting requirements
5. Grange exhibitors are limited to entries in one level, Primary, Junior or Senior



**Competitive Skills Signature Page
4-H AND GRANGE**

I certify that this exhibitor will represent and is enrolled in a bona fide Grange, Independent, 4-H Club, or FFA chapter of which I am an official Agent, Instructor or Advisor for this exhibitor. Exhibitors will/or have conducted approved projects under my guidance and supervision. I further certify that this Exhibitor has met the criteria and is eligible, and in accordance with the rules and regulations of the organization which I represent.

Please print the following:

Advisor/Leader: _____

Exhibitor: _____

Address: _____

_____ Phone _____

Exhibitor Signature: _____

Advisor Signature: _____

Club/Chapter: FFA or SKILLS/USA 4-H: Grange: _____

P.O. Box, 199 East Hazel Street, Gridley, CA 95948 530-846-3626

OPEN YOUTH, 4-H, GRANGE FARM AND GARDEN:

2024 IMPORTANT ENTRY DATES

YOUTH FARM AND GARDEN			
DIVISION	ENTRIES CLOSE	DIVISION	ENTRY RECEIVING
N		N	
ALL	12 midnight/SUNDAY AUG 18 online	ALL	8AM-54PM/WEDS AUG 21 Butte Hall
		DIVISION	ENTRY JUDGING
		N	
		ALL	9:00AM/THURS AUG 22 Butte Hall

!! PLEASE SEE DEPARTMENTAL RULES FOR ENTRY GUIDELINES!!

DIVISION 500 – FRUITS AND POD VEGETABLES

CLASS:

1. Fruits and Pod vegetables, any, specify – Open Youth Grades K-5
2. Fruits and Pod vegetables, any, specify – Open Youth Grades 6-8
3. Fruits and Pod vegetables, any, specify – Open Youth Grades 9-12
4. *Fruits and Pod vegetables, any, specify- 4-H Ages 9-10*
5. *Fruits and Pod vegetables, any, specify- 4-H Ages 11-13*
6. *Fruits and Pod vegetables, any, specify- 4-H Ages 14-19*
7. Fruits and Pod vegetables, any, specify – Grange Ages 5-8
8. Fruits and Pod vegetables, any, specify – Grange Ages 9-13
9. Fruits and Pod vegetables, any, specify – Grange Ages 14-19

DIVISION 501 – ROOT, BULB OR TUBER

CLASS:

1. Any root, bulb or tuber, specify – Open Youth Grades K-5
2. Any root, bulb or tuber, specify – Open Youth Grades 6-8
3. Any root, bulb or tuber, specify – Open Youth Grades 9-12
4. *Any root, bulb or tuber, specify – 4-H Ages 9-10*
5. *Any root, bulb or tuber, specify – 4-H Ages 11-13*
6. *Any root, bulb or tuber, specify – 4-H Ages 14-19*
7. Any root, bulb or tuber, specify – Grange Ages 5-8
8. Any root, bulb or tuber, specify – Grange Ages 9-13
9. Any root, bulb or tuber, specify – Grange Ages 14-19

DIVISION 502 – VINE CROPS

CLASS:

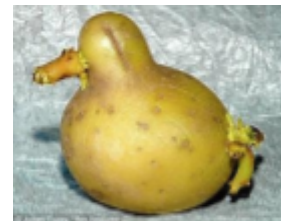
1. Any vine crop, specify – Open Youth Grades K-5
2. Any vine crop, specify – Open Youth Grades 6-8
3. Any vine crop, specify – Open Youth Grades 9-12
4. *Any vine crop, specify – 4-H Ages 9-10*
5. *Any vine crop, specify – 4-H Ages 11-13*
6. *Any vine crop, specify – 4-H Ages 14-19*
7. Any vine crop, specify – Grange Ages 5-8
8. Any vine crop, specify – Grange Ages 9-13
9. Any vine crop, specify – Grange Ages 14-19



DIVISION 503 – NATURE’S UNIQUE: Open to those Farm/Garden products that are not market size or types which are unusual in size, show or color (those which departs from the standard)

CLASS:

1. Unusual size, specify variety – Open Youth Grades K-5
2. Unusual size, specify variety – Open Youth Grades 6-8
3. Unusual size, specify variety – Open Youth Grades 9-12
4. *Unusual size, specify variety – 4-H Ages 9-10*
5. *Unusual size, specify variety – 4-H Ages 11-13*
6. *Unusual size, specify variety – 4-H Ages 14-19*
7. Unusual size, specify variety – Grange Ages 5-8
8. Unusual size, specify variety – Grange Ages 9-13
9. Unusual size, specify variety – Grange Ages 14-19
10. Unique or unusual shape, specify variety – Open Youth Grades K-5
11. Unique or unusual shape, specify variety – Open Youth Grades 6-8
12. Unique or unusual shape, specify variety – Open Youth Grades 9-12
13. *Unique or unusual shape, specify variety – 4-H Ages 5-8*
14. *Unique or unusual shape, specify variety – 4-H Ages 9-13*
15. *Unique or unusual shape, specify variety – 4-H Ages 14-19*
16. Unique or unusual shape, specify variety – Grange Ages 5-8
17. Unique or unusual shape, specify variety – Grange Ages 9-13
18. Unique or unusual shape, specify variety – Grange Age 14-19



DIVISION 504 – MIXED CHOICE BASKET:

1. Basket must include list all Farm and Garden produce used on a card.
2. Include a combination of at least 3 (three) different varieties chosen divisions and classes, attractively arranged in a suitable container
3. The container must be provided by the exhibitor and enhance the display
4. Number of specimens per variety is dependent on the size of the display
5. Judging will be based on total appearance, color, texture, quality of specimen suitability of container and attractiveness of arrangement
6. Maximum size is 16" x 32"

CLASS:

1. Any mixed basket, specify – Open Youth Grades K-5
2. Any mixed basket, specify – Open Youth Grades 6-8
3. Any mixed basket, specify – Open Youth Grades 9-12
4. *Any mixed basket, specify – 4-H Ages 9-10*
5. *Any mixed basket, specify – 4-H Ages 11-13*
6. *Any mixed basket, specify – 4-H Ages 14-19*
7. Any mixed basket, specify – Grange Ages 5-8
8. Any mixed basket, specify – Grange Ages 9-13
9. Any mixed basket, specify – Grange Ages 14-19

DIVISION 505 - YOUTH GROUP FARM AND GARDEN, ANY VEGGIE

CLASS:

1. Any veggie, specify - Open Youth Grades K-5
2. Any veggie, specify - Open Youth Grades 6-8
3. Any veggie, specify - Open Youth Grades 9-12
4. Any veggie, specify - 4H Ages 9-10
5. Any veggie, specify - 4H Ages 11-13
6. Any veggie, specify - 4H Ages 14-19
7. Any veggie, specify - Grange Ages 5-8
8. Any veggie, specify - Grange Ages 9-13
9. Any veggie, specify - Grange Ages 14-19

YOUTH FARM AND GARDEN RULES

1. Farm & Garden (agriculture and horticulture) products **must** be produced by **the exhibitor**.
2. Enter exact number of fruits, vegetables, etc., as specified in the listing.
3. Variety of products must be adequately and correctly labeled.
4. If product is specified in bunches, bunches **must** be tied.
5. “Any other” classes are for varieties that are not listed anywhere else. Please state variety when entering under description.
6. Specimen must be free of insects, or they will be disqualified.
7. Specimen should be free of bruises and be uniform in size.
8. Exhibits showing features which detract from the commercial value of any produce are undesirable and should be avoided. Equal maturity at the state of ripeness as that required by Sec. 42513 of the California Agriculture Code in order to be considered for a premium award.
9. Sec. 42513: Mature: Having reached the state of ripeness, which insures the completion of the ripening process to a degree which will ensure palatability, after the removal of product from the tree, plant or vine.
10. Sec. 42515 Overripe: Having an advanced state or a maturity which causes the product to be undesirable for human consumption in a fresh state.
11. Exception to size and quality can be entered in Division 113 – Nature’s Unique.
12. *Entries that spoil during the Fair will be removed.*
13. Management will not be responsible for the return of the exhibits.

OPEN YOUTH, 4-H, GRANGE FLORICULTURE 2024 IMPORTANT ENTRY DATES

YOUTH FLORICULTURE			
DIVISION	ENTRIES CLOSE	DIVISIO	ENTRY RECEIVING
510-512	12 midnight/SUNDAY AUG 11 online	N 510-512	8AM-12PM & 4-7PM/Tues 8/20 8AM-12PM & 4-7PM/Wed 8/21 Butte Hall
513-514	12 midnight/ SUNDAY AUG 18 online	N 513-514	8AM-12PM & 4-7PM/Wed 8/21 7-9AM/THURS AUG 22 Butte Hall
		DIVISIO N ALL	ENTRY JUDGING 11:00AM/THURS AUG 22 Butte Hall

!!PLEASE SEE DEPARTMENTAL RULES FOR ENTRY GUIDELINES!!

DIVISION 510 – CONTAINER GARDENS includes: Bonsai, flowering, foliage, hanging, cactus/succulents, herbs, combination gardens and theme gardens

CLASS:

1. Any container garden, specify – Open Youth Grades K-5
2. Any container garden, specify – Open Youth Grades 6-8
3. Any container garden, specify – Open Youth Grades 9-12
4. *Any container garden, specify – 4-H, Ages 9-10*
5. *Any container garden, specify – 4-H, Ages 11-13*
6. *Any container garden, specify – 4-H, Ages 14-19*
7. Any container garden, specify – Grange, Ages 5-8
8. Any container garden, specify – Grange, Ages 9-13
9. Any container garden, specify – Grange, Ages 14-19

DIVISION 511 – FLORAL DESIGN includes: Arrangements, designs and wall decorations

CLASS:

1. Any floral design, specify – Open Youth Grades K-5
2. Any floral design, specify – Open Youth Grades 6-8
3. Any floral design, specify – Open Youth Grades 9-12

4. Any floral design, specify – 4-H, Ages 9-10
5. Any floral design, specify – 4-H, Ages 11-13
6. Any floral design, specify – 4-H, Ages 14-19
7. Any floral design, specify – Grange, Ages 5-8
8. Any floral design, specify – Grange, Ages 9-13
9. Any floral design, specify – Grange, Ages 14-19

DIVISION 512 – CACTUS AND SUCCULENTS: A single specimen per container

CLASS:

1. Any cactus or succulent, specify – Open Youth Grades K-5
2. Any cactus or succulent, specify – Open Youth Grades 6-8
3. Any cactus or succulent, specify – Open Youth Grades 9-12
4. Any cactus or succulent, specify – 4-H, Ages 9-10
5. Any cactus or succulent, specify – 4-H, Ages 11-13
6. Any cactus or succulent, specify – 4-H, Ages 14-19
7. Any cactus or succulent, specify – Grange, Ages 5-8
8. Any cactus or succulent, specify – Grange, Ages 9-13
9. Any cactus or succulent, specify – Grange, Ages 14-19



DIVISION 513 – FRESH CUT FLOWERS: Dahlia's and roses = 1 stem, Annuals, bi-annuals and perennials = 3 stems

CLASS:

1. Any fresh cut flower, specify – Open Youth Grades K-5
2. Any fresh cut flower, specify – Open Youth Grades 6-8
3. Any fresh cut flower, specify – Open Youth Grades 9-12
4. Any fresh cut flower, specify – 4-H, Ages 9-10
5. Any fresh cut flower, specify – 4-H, Ages 11-13
6. Any fresh cut flower, specify – 4-H, Ages 14-19
7. Any fresh cut flower, specify – Grange, Ages 5-8
8. Any fresh cut flower, specify – Grange, Ages 9-13
9. Any fresh cut flower, specify – Grange, Ages 14-19



DIVISION 514 – FRESH CUT FLOWERS -BUCKET OR BASKET: Container must be provided by exhibitor and compliment the display

CLASS:

1. Any bucket or basket of fresh cut flower, specify – Open Youth Grades K-5
2. Any bucket or basket of fresh cut flowers, specify – Open Youth Grades 6-8
3. Any bucket or basket of fresh cut flowers, specify – Open Youth Grades 9-12
4. *Any bucket or basket of fresh cut flowers, specify – 4-H, Ages 9-10*
5. *Any bucket or basket of fresh cut flowers, specify – 4-H, Ages 11-13*
6. *Any bucket or basket of fresh cut flowers, specify – 4-H, Ages 14-19*
7. Any bucket or basket of fresh cut flower, specify – Grange, Ages 5-8
8. Any bucket or basket of fresh cut flowers, specify – Grange, Ages 9-13
9. Any bucket or basket of fresh cut flowers, specify – Grange, Ages 14-19

DIVISION 515 - YOUTH GROUP FRESH CUT, ANY VARIETY

CLASS:

1. Any fresh cut flower, specify - Open Youth Grades K-5
2. Any fresh cut flower, specify - Open Youth Grades 6-8
3. Any fresh cut flower, specify - Open Youth Grades 9-12
4. Any fresh cut flower, specify - 4H Ages 9-10
5. Any fresh cut flower, specify - 4H Ages 11-13
6. Any fresh cut flower, specify - 4H Ages 14-19
7. Any fresh cut flower, specify - Grange Ages 5-8
8. Any fresh cut flower, specify - Grange Ages 9-13
9. Any fresh cut flower, specify - Grange Ages 14-19

YOUTH FLORICULTURE RULES

1. Entries must have been designed and grown by the exhibitor with the current Fair year, September 2023 to August 2024
2. Floral arrangement plant material need not be grown by the designer
3. Competition is open to all amateur gardeners in Butte, Colusa, Glenn, Sutter or Yuba counties
4. Containers for fresh cut flowers and foliage specimens will be supplied by the Fair
5. Containers owned by exhibitors must be marked with a durable label with his/her name and phone number. Exhibitor must furnish an acceptable saucer for safe watering (except in the cactus and succulent divisions)

6. *ALL entries must be MOVABLE by all staff and volunteers.* Staff/volunteers will take every care possible when moving/handling exhibit. Management will not be responsible for loss or breakage
7. No artificial or treated fresh plant material is permitted in exhibits except as specified
8. The following factors will be considered in judging in each class wherever applicable: perfection of bloom, perfection of foliage, size, length of stem, condition and color
9. Exhibitors are responsible for maintaining their fresh cut flower and foliage exhibit in show-ready condition while on view
10. Those unsuitable for display will be removed
11. Freshening/maintenance may be done by prior arrangement with Staff or Volunteer Supervisor
12. No silk flowers allowed

OPEN YOUTH, 4-H, GRANGE CLOTHING/TEXTILES & QUILTS 2024 IMPORTANT ENTRY DATES

YOUTH TEXTILES/CLOTHING/QUILTS									
DIVISIO N	ENTRIES CLOSE	DIVISIO N	ENTRY RECEIVING						
ALL	12 midnight/SUNDAY AUG 4 online	ALL	9:00AM-4300PM/SAT AUG 10 Expo Hall						
			<table style="margin-left: auto; margin-right: auto;"> <tr> <td style="padding: 5px;">Clothing & Textiles</td> <td style="padding: 5px;">DIVISIO N 520-522 & 525</td> <td style="padding: 5px;">ENTRY JUDGING NOON/MON AUG 12 Expo Hall</td> </tr> <tr> <td style="padding: 5px;">Quilts</td> <td style="padding: 5px;">523-524</td> <td style="padding: 5px;">1:00PM/TUES AUG 13 Expo Hall</td> </tr> </table>	Clothing & Textiles	DIVISIO N 520-522 & 525	ENTRY JUDGING NOON/MON AUG 12 Expo Hall	Quilts	523-524	1:00PM/TUES AUG 13 Expo Hall
Clothing & Textiles	DIVISIO N 520-522 & 525	ENTRY JUDGING NOON/MON AUG 12 Expo Hall							
Quilts	523-524	1:00PM/TUES AUG 13 Expo Hall							

!!PLEASE SEE DEPARTMENTAL RULES FOR ENTRY GUIDELINES!!

DIVISION 520 – SEWN CLOTHING

CLASS:

1. Any sewn clothing, specify – Open Youth Grades K-5
2. Any sewn clothing, specify – Open Youth Grades 6-8
3. Any sewn clothing, specify – Open Youth Grades 9-12
4. *Any sewn clothing, specify – 4-H, Ages 9-10*
5. *Any sewn clothing, specify – 4-H Ages 11-13*
6. *Any sewn clothing, specify – 4-H Ages 14-19*
7. Any sewn clothing, specify – Grange Ages 5-8
8. Any sewn clothing, specify – Grange Ages 9-13
9. Any sewn clothing, specify – Grange Ages 14-19

DIVISION 521 – KNITTING

CLASS:

1. Any knitted item, specify – Open Youth Grades K-5
2. Any knitted item, specify – Open Youth Grades 6-8
3. Any knitted item, specify – Open Youth Grades 9-12
4. *Any knitted item, specify – 4-H, Ages 9-10*
5. *Any knitted item, specify – 4-H, Ages 11-13*
6. *Any knitted item, specify – 4-H, Ages 14-19*
7. Any knitted item, specify – Grange, Ages 5-8
8. Any knitted item, specify – Grange, Ages 9-13
9. Any knitted item, specify – Grange, Ages 14-19



DIVISION 522 – CROCHET

CLASS:

1. Any crocheted item, specify – Open Youth Grades K-5
2. Any crocheted item, specify – Open Youth Grades 6-8
3. Any crocheted item, specify – Open Youth Grades 9-12
4. *Any crocheted item, specify – 4-H, Ages 9-10*
5. *Any crocheted item, specify – 4-H, Ages 11-13*
6. *Any crocheted item, specify – 4-H, Ages 14-19*
7. Any crocheted item, specify – Grange, Ages 5-8
8. Any crocheted item, specify – Grange, Ages 9-13
9. Any crocheted item, specify – Grange, Ages 14-19

DIVISION 523 – MACHINE SEWN QUILTS

CLASS:

1. Any machine quilt, specify – Open Youth Grades K-5
2. Any machine quilt, specify – Open Youth Grades 6-8
3. Any machine quilt, specify – Open Youth Grades 9-12
4. *Any machine quilt, specify – 4-H, Ages 9-10*
5. *Any machine quilt, specify – 4-H, Ages 11-13*
6. *Any machine quilt, specify – 4-H, Ages 14-19*
7. Any machine quilt, specify – Grange, Ages 5-8
8. Any machine quilt, specify – Grange, Ages 9-13
9. Any machine quilt, specify – Grange, Ages 14-19



DIVISION 524 – HAND SEWN QUILTS

CLASS:

1. Any hand sewn quilt, specify – Open Youth Grades K-5
2. Any hand sewn quilt, specify – Open Youth Grades 6-8
3. Any hand sewn quilt, specify – Open Youth Grades 9-12
4. *Any hand sewn quilt, specify – 4-H, Ages 9-10*
5. *Any hand sewn quilt, specify – 4-H, Ages 11-13*
6. *Any hand sewn quilt, specify – 4-H, Ages 14-19*
7. Any hand sewn quilt, specify – Grange, Ages 5-8
8. Any hand sewn quilt, specify – Grange, Ages 9-13

9. Any hand sewn quilt, specify – Grange, Ages 14-19

DIVISION 525 – ANY OTHER SEWN ITEM (Hand or machine)

CLASS:

1. Any other sewn item, specify – Open Youth Grades K-5
2. Any other sewn item, specify – Open Youth Grades 6-8
3. Any other sewn item, specify – Open Youth Grades 9-12
4. *Any other sewn item, specify – 4-H, Ages 9-10*
5. *Any other sewn item, specify – 4-H, Ages 11-13*
6. *Any other sewn item, specify – 4-H, Ages 14-19*
7. Any other sewn item, specify – Grange, Ages 5-8
8. Any other sewn item, specify – Grange, Ages 9-13
9. Any other sewn item, specify – Grange, Ages 14-19

YOUTH CLOTHING, TEXTILES AND QUILTS RULES

1. All entries in this department must be made by the exhibitor from *start to finish* unless otherwise specified
2. Exhibits must not have been shown in any previous Butte County Fair year
3. All small pieces should be enclosed in a zip lock bag. Sets should be pinned or tacked together
4. Two or more entries entered in the same CLASS, must be different in material, pattern and style
5. If a special dye method or antique material was use, please nor it in the online entry
6. Articles must be clean and pressed. Judges will not consider items that are stained, soiled or show signs of wear for judging or display
7. The Fair will provide and attach ID tags at the time of entry receiving
8. “Any other” class is for items that so not fit into an existing class
9. 4” sleeve REQUIRED on all quilts over 48” x 70”
10. 4” sleeve RECOMMENDED on all quilts under 48” x 70”

OPEN YOUTH, 4-H, GRANGE PRESERVED FOODS

2024 IMPORTANT ENTRY DATES

YOUTH PRESERVED FOODS			
DIVISION	ENTRIES CLOSE	DIVISION	ENTRY RECEIVING
N		N	
ALL	12 midnight/SUNDAY AUG 4	ALL	9:00AM-3:00PM/SAT AUG 10
	online		Expo Hall
		DIVISION	ENTRY JUDGING
		N	
		ALL	9:00AM/TUES AUG 13
			Expo Hall

!!PLEASE SEE DEPARTMENTAL RULES FOR ENTRY GUIDELINES!!

DIVISION 530 – CANNED FRUIT

CLASS:



1. Any fruit, specify – Open Youth Grades K-5
2. Any fruit, specify – Open Youth Grades 6-8
3. Any fruit, specify – Open Youth Grades 9-12
4. *Any fruit, specify – 4-H, Ages 9-10*
5. *Any fruit, specify – 4-H, Ages 11-13*
6. *Any fruit, specify – 4-H, Ages 14-19*
7. Any fruit, specify – Grange, Ages 5-8
8. Any fruit, specify – Grange, Ages 9-13
9. Any fruit, specify – Grange, Ages 14-19

DIVISION 531 – CANNED VEGETABLES

CLASS:

1. Any vegetable, specify – Open Youth Grades K-5
2. Any vegetable, specify – Open Youth Grades 6-8
3. Any vegetable, specify – Open Youth Grades 9-12
4. *Any vegetable, specify – 4-H, Ages 9-10*
5. *Any vegetable, specify – 4-H, Ages 11-13*
6. *Any vegetable, specify – 4-H, Ages 14-19*
7. Any vegetable, specify – Grange, Ages 5-8
8. Any vegetable, specify – Grange, Ages 9-13
9. Any vegetable, specify – Grange, Ages 14-19



DIVISION 532 – DRIED FRUITS OR VEGETABLES**CLASS:**

1. Any dried fruit or vegetable, specify – Open Youth Grade K-5
2. Any dried fruit or vegetable, specify – Open Youth Grade 6-8
3. Any dried fruit or vegetable, specify – Open Youth Grade 9-12
4. *Any dried fruit or vegetable, specify – 4-H, Ages 9-10*
5. *Any dried fruit or vegetable, specify – 4-H, Ages 11-13*
6. *Any dried fruit or vegetable, specify – 4-H, Ages 14-19*
7. Any dried fruit or vegetable, specify – Grange, Ages 5-8
8. Any dried fruit or vegetable, specify – Grange, Ages 9-13
9. Any dried fruit or vegetable, specify – Grange, Ages 14-19

YOUTH PRESERVED FOODS RULES

1. This department is for amateur canners. You do not qualify as amateur competitor if you are selling or planning to sell or place your small batch products for sale.
HOWEVER, If you do not qualify as an amateur, you can register your entries into Division 373, Cottage Industry Preserved Foods, and follow all the rules listed below and specifics in the Department Guide.
2. All entries in this department must be home prepared and canned or packaged by the exhibitor **after August 2023**
3. All canning must be in glass jars designed specifically for canning purposes
4. All canning must be in sealed jars using either hot water bath (high acid or sugar) or pressure canning (low or non-acid foods, vegetables, meats or fish)
5. **NO steam-canned or open kettle allowed**
6. **No Paraffin seals**
7. All rings must be new and slightly loosened before putting entry on exhibit
8. All low or non-acid fruits such as figs or low acid tomatoes must have lemon juice added, as directed by the USDA Guide to Home Canning
9. All exhibits will be tasted during judging
10. Two identical jars must be entered. One for tasting and one for display. The Judge will decide which of the two jars will be opened for tasting
11. Jars/bags (for dried items) must be labeled on the **side or bottom**, NOT on the lid, prior to arrival at the Fair
12. The label needs the following information:

- a.** Name of product
- b.** Process of canning (wbc or pc)
- c.** Date canned
- d.** Do not include the exhibitors name on the jars, an ID tag will be provided to you by the Fair at the time you drop your items off
- e.** All jars must be a minimum of ½ pint or 1 pint as directed in the division/class
- f.** Open jars must be picked up by end of day on day of judging. Due to health/safety concerns, jars will not be saved beyond that time

OPEN YOUTH, 4-H, GRANGE BAKING AND CONFECTIONS 2024 IMPORTANT ENTRY DATES

YOUTH BAKING AND CONFECTIONS					
DIVISION	ENTRIES CLOSE	DIVISION	ENTRY RECEIVING	DIVISION	ENTRY JUDGING
ALL	12 midnight/SUNDAY AUG 18 online	ALL	9AM-NOON/WEDS AUG 21 Expo Hall	ALL	1PM/WEDS AUG 22 Expo Hall

!!PLEASE SEE DEPARTMENTAL RULES FOR IMPORTANT ENTRY GUIDELINES!!

**YOU MUST INCLUDE AN INGREDIENT LIST FOR ALL ENTRIES IN THIS DEPARTMENT,
AS ALL ITEMS WILL BE TASTED**

DIVISION 540 – COOKIES (Four cookies)

CLASS:

1. Any cookie, specify - Open Youth Grade K-5
2. Any cookie, specify - Open Youth Grade 6-8
3. Any cookie, specify - Open Youth Grade 9-12
4. Any cookie, specify - 4-H, Ages 9-10
5. Any cookie, specify - 4-H, Ages 11-13
6. Any cookie, specify - 4-H, Ages 14-19
7. Any cookie, specify – Grange, Ages 5-8
8. Any cookie, specify – Grange, Ages 9-13
9. Any cookie, specify – Grange, Ages 14-19



DIVISION 541 – CAKES (1/2 cake plus one slice)

CLASS:

1. Any cake, specify - Open Youth Grade K-5
2. Any cake, specify - Open Youth Grade 6-8
3. Any cake, specify - Open Youth Grade 9-12
4. Any cake, specify - 4-H, Ages 9-10
5. Any cake, specify - 4-H, Ages 11-13
6. Any cake, specify - 4-H, Ages 14-19
7. Any cake, specify – Grange, Ages 5-8
8. Any cake, specify – Grange, Ages 9-13
9. Any cake, specify – Grange, Ages 14-19



DIVISION 542- PIES (One (1) whole pie, maximum OR 2 pastries)

CLASS:

1. Any pie, specify - Open Youth Grade K-5
2. Any pie, specify - Open Youth Grade 6-8
3. Any pie, specify - Open Youth Grade 9-12
4. *Any pie, specify - 4-H, Ages 9-10*
5. *Any pie, specify - 4-H, Ages 11-13*
6. *Any pie, specify - 4-H, Ages 14-19*
7. Any pie, specify – Grange, Ages 5-8
8. Any pie, specify – Grange, Ages 9-13
9. Any pie, specify – Grange, Ages 14-19



DIVISION 543- CONFECTIONS (Three pieces)

CLASS:

1. Any confection, specify - Open Youth Grade K-5
2. Any confection, specify - Open Youth Grade 6-8
3. Any confection, specify - Open Youth Grade 9-12
4. *Any confection, specify - 4-H, Ages 9-10*
5. *Any confection, specify - 4-H, Ages 11-13*
6. *Any confection, specify - 4-H, Ages 14-19*
7. Any confection, specify – Grange, Ages 5-8
8. Any confection, specify – Grange, Ages 9-13
9. Any confection, specify – Grange, Ages 14-19



DIVISION 544 – FAIR RECIPE CRANBERRY LEMON BARS (8X8 PAN)

CLASS:

1. Fair recipe, specify - Open Youth Grade K-5
2. Fair recipe, specify - Open Youth Grade 6-8
3. Fair recipe, specify - Open Youth Grade 9-12
4. *Fair recipe, specify - 4-H, Ages 9-10*
5. *Fair recipe, specify - 4-H, Ages 11-13*
6. *Fair recipe, specify - 4-H, Ages 14-19*
7. Fair recipe, specify – Grange, Ages 5-8
8. Fair recipe, specify – Grange, Ages 9-13
9. Fair recipe, specify – Grange, Ages 14-19

RULES:

1. Exhibitor must follow the recipe provided
2. Oven temperatures may vary, and baking times can differ from oven to oven. Please adjust accordingly
3. Only one entry into this contest, per entrant

RECIPE:

Ingredients

Crust:

- ½ cup unsalted butter, melted
- 3 tablespoons white sugar
- 1 teaspoon almond extract
- ½ teaspoon salt
- 1 cup all-purpose flour

Cranberry Layer:

- 6 ounces fresh or frozen cranberries
- ¼ cup white sugar
- 2 tablespoons water
- 1 ½ tablespoons lemon zest

Lemon Layer:

- 2 large eggs
- ¾ cup white sugar
- 1/3 cup freshly-squeezed lemon juice

- 1/3 cup all-purpose flour
- 1 tablespoon lemon zest
- confectioners sugar, as needed

Directions

1. Preheat the oven to 350 degrees F (180 degrees C). Grease an 8x8-inch pan or line with parchment paper on the bottom, leaving a little overhang to easily remove bars.
2. Stir melted butter, 3 tablespoons sugar, almond extract and salt together in a bowl. Add flour, and mix until well incorporated. Press dough mixture into the prepared pan in an even layer.
3. Bake in the preheated oven until edges start to turn a light brown, 15-20 minutes. Remove from the oven, and set aside.
4. Meanwhile, combine cranberries, ¼ cup sugar, water, and 1 ½ tablespoons lemon zest in a small saucepan. Cook over medium heat, stirring often. Once cranberries start to pop, mash down with the back of a spoon, until cranberries break down into a smooth consistency, 9-12 minutes. Set aside.
5. Whisk eggs, ¾ cup sugar, lemon juice, flour, and 1 tablespoon lemon zest in a bowl until well combined.
6. To assemble, spread the cranberry mixture evenly over the crust, and pour the lemon layer mixture over the cranberry layer.
7. Return to the oven and bake until filling is set, 20-25 minutes.
8. Cool completely in the pan, and run a knife around the pan edges. Cut into squares and dust with confectioners sugar.

Nutrition Facts

Calories 169
 total fat 6g
 saturated fat 4g
 cholesterol 39mg
 sodium 78mg
 total
 carbohydrate 26g
 dietary fiber 1g
 total sugars 17g
 protein 2g
 vitamin c 3mg
 calcium 10mg
 iron 1mg
 potassium 38mg

Prep Time: 20 mins Cook Time: 45 mins

Total Time: 1 hour and 5 mins Servings: 8

DIVISION 545- BREAD ½ loaf plus one slice, unless otherwise specified. No mini loaves.

CLASS:

10. Any quick Bread, no yeast, specify
11. Any bread, yeast, specify

DIVISION 546- BROWNIES (Four brownies, 3 display, one tasting)

CLASS:

1. Any confection, specify - Open Youth Grade K-5
2. Any confection, specify - Open Youth Grade 6-8
3. Any confection, specify - Open Youth Grade 9-12
4. *Any confection, specify - 4-H, Ages 9-10*
5. *Any confection, specify - 4-H, Ages 11-13*
6. *Any confection, specify - 4-H, Ages 14-19*
7. Any confection, specify – Grange, Ages 5-8
8. Any confection, specify – Grange, Ages 9-13
9. Any confection, specify – Grange, Ages 14-19

YOUTH BAKING AND CONFECTIONS RULES

1. All entries in this department must be home prepared by the exhibitor. **No package mixes.**
2. Wrapping instructions:
 - a. Bread – zip lock bag. Cut end toward bottom, unopen end of bag. No plate or cardboard
 - b. Biscuits, rolls, cookies and confections – on a small plate in a zip lock bag
 - c. Loaf, Pound or Layer cakes – on a cardboard base (not to exceed 1” beyond cake)
 - d. Pies – in a zip lock bag.
 - e. See division for required amounts of product
3. Entries must be accurately labeled on the bottom of the bag, plate or cardboard
4. Entries that spoil during exhibit time will be removed from the display and entry card (provided by the Fair when you drop off your item) and photo of entry will be left in place.

OPEN YOUTH, 4-H, GRANGE FINE ARTS (Unframed art/craft projects should be entered in Crafts)

2024 IMPORTANT ENTRY DATES

YOUTH FINE ARTS					
DIVISION	ENTRIES CLOSE	DIVISION	ENTRY RECEIVING	DIVISION	ENTRY JUDGING
N		N		N	
ALL	12 midnight/SUNDAY AUG 4 online	ALL	9:00AM-3:00PM/SAT AUG 10 Expo Hall	ALL	9AM/MON AUG 12 Expo Hall

!!PLEASE SEE DEPARTMENTAL RULES FOR ENTRY GUIDELINES!!

DIVISION 550 – PENCIL DRAWINGS

CLASS:

1. Any pencil drawing, specify – Open Youth Grades K-5
2. Any pencil drawing, specify – Open Youth Grades 6-8
3. Any pencil drawing, specify – Open Youth Grades 9-12
4. *Any pencil drawing, specify – 4-H, Ages 9-10*
5. *Any pencil drawing, specify – 4-H, Ages 11-13*
6. *Any pencil drawing, specify – 4-H, Ages 14-19*
7. Any pencil drawing, specify – Grange, Ages 5-8
8. Any pencil drawing, specify – Grange, Ages 9-13
9. Any pencil drawing, specify – Grange, Ages 14-19



DIVISION 551 – PEN AND INK

CLASS:

1. Any pen and ink drawing, specify – Open Youth Grades K-5
2. Any pen and ink drawing, specify – Open Youth Grades 6-8
3. Any pen and ink drawing, specify – Open Youth Grades 9-12
4. *Any pen and ink drawing, specify – 4-H, Ages 9-10*
5. *Any pen and ink drawing, specify – 4-H, Ages 11-13*
6. *Any pen and ink drawing, specify – 4-H, Ages 14-19*
7. Any pen and ink drawing, specify – Grange, Ages 5-8
8. Any pen and ink drawing, specify – Grange, Ages 9-13
9. Any pen and ink drawing, specify – Grange, Ages 14-19

DIVISION 552 – OIL OR ACRYLIC

CLASS:

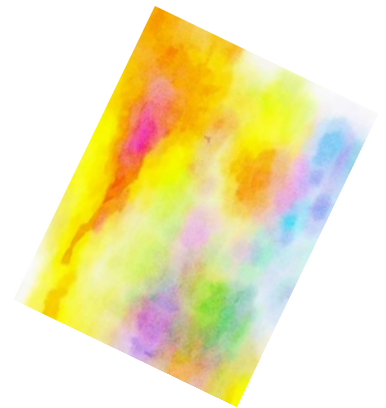
1. Any oil or acrylic painting, specify – Open Youth Grades K-5
2. Any oil or acrylic painting, specify – Open Youth Grades 6-8
3. Any oil or acrylic painting, specify – Open Youth Grades 9-12
4. *Any oil or acrylic painting, specify – 4-H, Ages 9-10*
5. *Any oil or acrylic painting, specify – 4-H, Ages 11-13*
6. *Any oil or acrylic painting, specify – 4-H, Ages 14-19*
7. Any oil or acrylic painting, specify – Grange, Ages 5-8
8. Any oil or acrylic painting, specify – Grange, Ages 9-13
9. Any oil or acrylic painting, specify – Grange, Ages 14-19



DIVISION 553 – WATERCOLOR

CLASS:

1. Any watercolor painting, specify – Open Youth Grades K-5
2. Any watercolor painting, specify – Open Youth Grades 6-8
3. Any watercolor painting, specify – Open Youth Grades 9-12
4. *Any watercolor painting, specify – 4-H, Ages 9-10*
5. *Any watercolor painting, specify – 4-H, Ages 11-13*
6. *Any watercolor painting, specify – 4-H, Ages 14-19*
7. Any watercolor painting, specify – Grange, Ages 5-8
8. Any watercolor painting, specify – Grange, Ages 9-13
9. Any watercolor painting, specify – Grange, Ages 14-19



DIVISION 554 – PASTELS

CLASS:

1. Any pastel painting, specify – Open Youth Grades K-5
2. Any pastel painting, specify – Open Youth Grades 6-8
3. Any pastel painting, specify – Open Youth Grades 9-12
4. *Any pastel painting, specify – 4-H, Ages 9-10*
5. *Any pastel painting, specify – 4-H, Ages 11-13*
6. *Any pastel painting, specify – 4-H, Ages 14-19*
7. Any pastel painting, specify – Grange, Ages 5-8
8. Any pastel painting, specify – Grange, Ages 9-13
9. Any pastel painting, specify – Grange, Ages 14-19

YOUTH FINE ARTS RULES

1. In Fine Arts, Beginner is defined as someone who engages in the creation of artworks as a hobby or for the love of the work
2. Experienced is defined as someone who engages in the creation of artworks as a hobby or for the love of the work for *a lengthy time* OR who puts their art on display with the intention of selling for monetary profit. Art instructors or teachers are considered experienced
3. All exhibits in this department must have been completed after August 2022 and must not have been shown at any previous Butte County Fair
- 4. All paintings and drawings are to be framed and ready for hanging. *Any exhibit that is not suitably framed will be refused or moved to a more appropriate department!***
5. Frames consist of wood or plastic frames or heavy-duty mat board frames and are to be in good condition suitable for hanging. Heavy pieces should have affixed wire with suitable strength to hold picture
- 6. Unframed artwork should be entered in the Crafts/Home & Industrial Arts. Division 595.**
7. Fragile or unstable items may be eliminated
8. List the size of the painting/drawing (including the frame) in description box of the online entry form
9. Names are not permitted on the front of the artwork and will be covered by Fair staff prior to Judging. Judging is “blind”, which means the Judge cannot know the name of the Exhibitor
10. An ID label should be affixed to the upper left-hand corner of the back of the entry showing the name, address and phone number of the exhibitor
11. Items will be moved by the Fair staff. Fair and/or Management is not responsible for damage
12. Management reserves the right to remove any item not deemed appropriate for a family based Fair Fine Arts show

OPEN YOUTH, 4-H, GRANGE PHOTOGRAPHY 2024 IMPORTANT ENTRY DATES

YOUTH PHOTOGRAPHY			
DIVISIO N	ENTRIES CLOSE	DIVISIO N	ENTRY RECEIVING
ALL	12 midnight/SUNDAY AUG 4 online	ALL	9:00AM-3:00PM/SAT AUG 10 Expo Hall
		DIVISIO N ALL	ENTRY JUDGING 11AM/MON AUG 12 Expo Hall

!!PLEASE SEE DEPARTMENTAL RULES FOR ENTRY GUIDELINES!!

DIVISION 560 – BLACK AND WHITE



CLASS:

1. Black and white any subject, specify – Open Youth Grades K-5
2. Black and white any subject, specify – Open Youth Grades 6-8
3. Black and white any subject, specify – Open Youth Grades 9-12
4. *Black and white any subject, specify – 4-H, Ages 9-10*
5. *Black and white any subject, specify – 4-H, Ages 11-13*
6. *Black and white any subject, specify – 4-H, Ages 14-19*
7. Black and white any subject, specify – Grange, Ages 5-8
8. Black and white any subject, specify – Grange, Ages 9-13
9. Black and white any subject, specify – Grange, Ages 14-19

DIVISION 561 – COLOR

CLASS:

1. Color any subject, specify – Open Youth Grades K-5
2. Color any subject, specify – Open Youth Grades 6-8
3. Color any subject, specify – Open Youth Grades 9-12
4. *Color any subject, specify – 4-H, Ages 9-10*
5. *Color any subject, specify – 4-H, Ages 11-13*
6. *Color any subject, specify – 4-H, Ages 14-19*
7. Color any subject, specify – Grange, Ages 5-8
8. Color any subject, specify – Grange, Ages 9-13
9. Color any subject, specify – Grange, Ages 14-19

DIVISION 562- BUTTE COUNTY SCENES: Photos must be identifiable scenes from Butte County. Examples include: rice paddies with ducks, historic parks and places, etc

1. Landscape or Place, any, specify-Open Youth Grades K-5
2. Landscape or Place, any, specify-Open Youth Grades 6-8
3. Landscape or Place, any, specify-Open Youth Grades 9-12
4. *Landscape or Place, any, specify-4H, Ages 9-10*
5. *Landscape or Place, any, specify-4H, Ages 11-13*
6. *Landscape or Place, any, specify-4H, Ages 14-19*
7. Landscape or Place, any, specify-Grange, Ages 5-8
8. Landscape or Place, any, specify-Grange, Ages 9-13
9. Landscape or Place, any, specify-Grange, Ages 14-19

DIVISION 563- CALIFORNIA STATE PARKS

CLASS:

1. California State Park, specify – Open Youth Grades K-5
2. California State Park, specify – Open Youth Grades 6-8
3. California State Park, specify – Open Youth Grades 9-12
4. *California State Park, specify – 4-H, Ages 9-10*
5. *California State Park, specify – 4-H, Ages 11-13*
6. *California State Park, specify – 4-H, Ages 14-19*
7. California State Park, specify – Grange, Ages 5-8
8. California State Park, specify – Grange, Ages 9-13
9. California State Park, specify – Grange, Ages 14-19

YOUTH PHOTOGRAPHY RULES

1. Beginner is defined as being NEW to photography
2. Experienced is defined as someone who has entered their photography in the Fair three or more times
3. All exhibits in this department must not have been shown AT ANY PREVIOUS Butte County Fair
4. No photograph of identical subject matter may be entered in more than one class/division (i.e. same dancer/pet in different poses entered in more than one class/division)
5. All photographs must be a minimum size of 8”x10” up to a maximum size of 16”x20” with a maximum mat size of 20”x24”

6. Photos are to be mounted on a mat board. Colored, proportional mat board may be used. **MATS MUST BE SECURELY ATTACHED**
7. Labels must be affixed to upper left-hand corner **of the back** of the entry showing Name, address and phone number. *DO NOT SHOW OR SIGN PHOTOGRAPHERS NAME ON FRONT OF WORK!! IT WILL BE COVERED BY STAFF DURING JUDGING AND MAY DETRACT FROM YOUR WORK!!*
8. ***FRAMED PRINTS, POLAROID PRINTS OR ANY EXHIBIT NOT PROPERLY MATTED WILL NOT BE ACCEPTED***
9. Management reserves the right to remove any item not deemed appropriate for a family based Fair
10. Butte County Fair will not be responsible for any loss or damage to personal property of exhibitors

**OPEN YOUTH, 4H, GRANGE CRAFTS/HOME & INDUSTRIAL ARTS
(non-auction)
2024 IMPORTANT ENTRY DATES**

YOUTH CRAFTS/HOME/INDUSTRIAL ARTS					
DIVISION		ENTRIES CLOSE	DIVISION	ENTRY RECEIVING	DIVISION
N			N		N
ALL		12 midnight/SUNDAY AUG 4	ALL	10:00AM-4:00PM/SAT AUG 10	570-574
		online		Expo Hall	575-579
					ENTRY JUDGING
					2PM/MON AUG 12
					4PM/TUES AUG 13

!!PLEASE SEE DEPARTMENTAL RULES FOR ENTRY GUIDELINES!!

DIVISION 595 – UNFRAMED ART, PENCIL, ACRYLIC, ANY OTHER MEDIUM

CLASS:

1. Any unframed art, specify – Open Youth Grades K-5
2. Any unframed art, specify – Open Youth Grades 6-8
3. Any unframed art, specify – Open Youth Grades 9-12
4. *Any unframed art, specify – 4-H, Ages 9-10*
5. *Any unframed art, specify – 4-H, Ages 11-13*
6. *Any unframed art, specify – 4-H, Ages 14-19*
7. Any unframed art, specify – Grange, Ages 5-8
8. Any unframed art, specify – Grange, Ages 9-13
9. Any unframed art, specify – Grange, Ages 14-19

DIVISION 596 – ANY OTHER CRAFT, ANY MEDIUM

CLASS:

1. Any other craft, specify – Open Youth Grades K-5
2. Any other craft, specify – Open Youth Grades 6-8
3. Any other craft, specify – Open Youth Grades 9-12
4. *Any other craft, specify – 4-H, Ages 9-10*
5. *Any other craft, specify – 4-H, Ages 11-13*
6. *Any other craft, specify – 4-H, Ages 14-19*
7. Any other craft, specify – Grange, Ages 5-8
8. Any other craft, specify – Grange, Ages 9-13

9. Any other craft, specify – Grange, Ages 14-19

DIVISION 570 – ROCK ART: May consist of One rock or several

CLASS:

10. Any rock art, specify – Open Youth Grades K-5
11. Any rock art, specify – Open Youth Grades 6-8
12. Any rock art, specify – Open Youth Grades 9-12
13. *Any rock art, specify – 4-H, Ages 9-10*
14. *Any rock art, specify – 4-H, Ages 11-13*
15. *Any rock art, specify – 4-H, Ages 14-19*
16. Any rock art, specify – Grange, Ages 5-8
17. Any rock art, specify – Grange, Ages 9-13
18. Any rock art, specify – Grange, Ages 14-19

DIVISION 571 – LEGOS

All Lego builds must be mounted on a display “board” with a maximum depth/width of 18”

CLASS:

1. Any Lego build, specify – Open Youth Grades K-5
2. Any Lego build, specify – Open Youth Grades 6-8
3. Any Lego build, specify – Open Youth Grades 9-12
4. *Any Lego build, specify – 4-H, Ages 9-10*
5. *Any Lego build, specify – 4-H, Ages 11-13*
6. *Any Lego build, specify – 4-H, Ages 14-19*
7. Any Lego build, specify – Grange, Ages 5-8
8. Any Lego build, specify – Grange, Ages 9-13
9. Any Lego build, specify – Grange, Ages 14-19



DIVISION 572 – JEWELRY

CLASS:

1. Any jewelry, specify – Open Youth Grades K-5
2. Any jewelry, specify – Open Youth Grades 6-8
3. Any jewelry, specify – Open Youth Grades 9-12
4. *Any jewelry, specify – 4-H, Ages 9-10*
5. *Any jewelry, specify – 4-H, Ages 11-13*
6. *Any jewelry, specify – 4-H, Ages 14-19*



7. Any jewelry, specify – Grange, Ages 5-8
8. Any jewelry, specify – Grange, Ages 9-13
9. Any jewelry, specify – Grange, Ages 14-19

DIVISION 573 – 3-D PRINTED PROJECTS

CLASS:

1. Any 3-D printed item, specify – Open Youth Grades K-5
2. Any 3-D printed item, specify – Open Youth Grades 6-8
3. Any 3-D printed item, specify – Open Youth Grades 9-12
4. *Any 3-D printed item, specify – 4-H, Ages 9-10*
5. *Any 3-D printed item, specify – 4-H, Ages 11-13*
6. *Any 3-D printed item, specify – 4-H, Ages 14-19*
7. Any 3-D printed item, specify – Grange, Ages 5-8
8. Any 3-D printed item, specify – Grange, Ages 9-13
9. Any 3-D printed item, specify – Grange, Ages 14-19

DIVISION 574 – JUNK ART: Any combination of metal, wood, glass or plastic

CLASS:

1. Any junk art, specify – Open Youth Grades K-5
2. Any junk art, specify – Open Youth Grades 6-8
3. Any junk art, specify – Open Youth Grades 9-12
4. *Any junk art, specify – 4-H, Ages 9-10*
5. *Any junk art, specify – 4-H, Ages 11-13*
6. *Any junk art, specify – 4-H, Ages 14-19*
7. Any junk art, specify – Grange, Ages 5-8
8. Any junk art, specify – Grange, Ages 9-13
9. Any junk art, specify – Grange, Ages 14-19

DIVISION 575 – WELDING PROJECTS (non-auction)

CLASS:

1. Welding, small project – Open Youth Grades 6-8
2. Welding, small project – Open Youth Grades 9-12
3. Welding, small project – 4-H, Ages 9-13 (Jr & Int)
4. Welding, small project – 4-H, Ages 14-19 (Senior)
5. Welding, small project – Grange, Ages 9-13 (Junior)
6. Welding, small project – Grange, Ages 14-19 (Senior)
7. Welding, large project – Open Youth Grades 6-8

8. Welding, large project – Open Youth Grades 9-12
9. Welding, large project – 4H, Ages 9-13 (Jr & Int)
10. Welding, large project – 4H, Ages 14-19
11. Welding, large project – Grange, Ages 9-13
12. Welding, large project – Grange, Ages 14-19

DIVISION 576 – JUNK ROBOTS.: MODELS; May be made from any material. NO chemicals, fire or living things are can be part of any robot. Does not move.

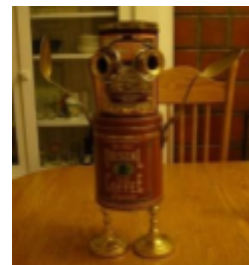
CLASS:

1. Model, specify – Open Youth Grades 1-3
2. Model, specify – Open Youth Grades 4-6
3. Model, specify – Open Youth Grades 7-8
4. Model, specify – Open Youth Grades 9-12
5. Model, specify – 4-H, Ages 9-10
6. Model, specify – 4-H, Ages 11-13
7. Model, specify – 4-H, Ages 14-19
8. Model, specify –Grange, Ages 5-8
9. Model, specify –Grange, Ages 9-13
10. Model, specify –Grange, Ages 14-19

DIVISION 577 – JUNK ROBOTS: MOCK-UP: May be made from any material. NO chemicals, fire or living things are can be part of any robot. Is stationary. Makes sound and/or has lights.

CLASS:

1. Mock-up, specify – Open Youth Grades 1-3
2. Mock-up, specify – Open Youth Grades 4-6
3. Mock-up, specify – Open Youth Grades 7-8
4. Mock-up, specify – Open Youth Grades 9-12
5. Mock-up, specify – 4-H, Ages 9-10
6. Mock-up, specify – 4-H, Ages 11-13
7. Mock-up, specify – 4-H, Ages 14-19
8. Mock-up, specify – Grange, Ages 5-8
9. Mock-up, specify – Grange, Ages 9-13
10. Mock-up, specify – Grange, Ages 14-19



DIVISION 578 – JUNK ROBOTS: PROTOTYPES: May be made from any material. NO chemicals, fire or living things are can be part of any robot. Must move. Must accomplish a simple or complex task.

CLASS:

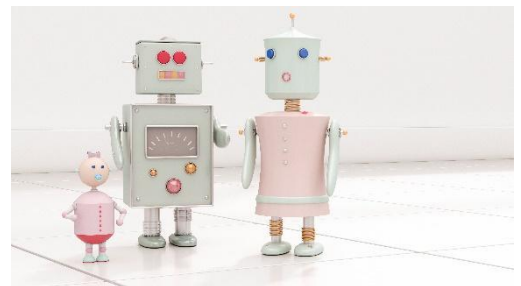
1. Prototype, specify – Open Youth Grades 1-3
2. Prototype, specify – Open Youth Grades 4-6
3. Prototype, specify – Open Youth Grades 7-8
4. Prototype, specify – Open Youth Grades 9-12
5. Prototype, specify – 4-H, Ages 9-10
6. Prototype, specify – 4-H, Ages 11-13
7. Prototype, specify – 4-H, Ages 14-19
8. Prototype, specify – Grange, Ages 5-8
9. Prototype, specify – Grange, Ages 9-13
10. Prototype, specify – Grange, Ages 14-19



DIVISION 579 – JUNK ROBOTS: PROTOTYPE – GROUP: Not less than two people comprise a group. May be made from any material. NO chemicals, fire or living things are can be part of any robot. Must move. Must accomplish a simple or complex task.

CLASS:

1. Prototype, specify – Open Youth Group Grades 1-3
2. Prototype, specify – Open Youth Group Grades 4-6
3. Prototype, specify – Open Youth Group Grades 7-8
4. Prototype, specify – Open Youth Group Grades 9-12
5. Prototype, specify – 4-H Group, Ages 9-10
6. Prototype, specify – 4-H Group, Ages 11-13
7. Prototype, specify – 4-H Group, Ages 14-19
8. Prototype, specify – Grange, Ages 5-8
9. Prototype, specify – Grange, Ages 9-13
10. Prototype, specify – Grange, Ages 14-19



YOUTH CRAFTS, HOME & INDUSTRIAL ARTS RULES

1. All exhibits in this department must not have been shown at any previous Butte County Fair
2. Fragile or unstable items may be eliminated if it is difficult to properly display
3. All names or personal information should be placed on the back of the entry for judging purposes. Exhibit tags will be provided by the Fair and will be attached at the time of receiving and while on display
4. Each entry in a class by the same exhibitor must be different in material and pattern
5. The Butte County Fair reserves the right to refuse to display items which have been deemed vulgar, in poor taste or inappropriate for display at a family arts and crafts show
6. Butte County Fair is not responsible for any theft/damage
7. Dedicated drop off will be available again this year, for **large and bulky items**. **Please contact the Fair office to schedule your time slot.** This will allow us to make appropriate arrangements for any special handling your project may require

If you have a large project, we encourage you to enter early so we can assess your display space needs 😊

ANY YOUTH DIGITAL ART

2024 IMPORTANT ENTRY DATES

ANY YOUTH DIGITAL ARTS					
DIVISION	ENTRIES CLOSE	DIVISION	ENTRY RECEIVING	DIVISION	ENTRY JUDGING
ALL	12 midnight/Sunday Aug 4 online	ALL	9:00-3:00 Sat August 10 Expo Hall	ALL	3:00PM/TUES AUG 13

!! PLEASE SEE DEPARTMENTAL RULES FOR ENTRY GUIDELINES!!

FIRST PLACE ENTRIES WILL RECEIVE BEST OF DIVISION ROSETTES

Digital Arts encompasses original artwork created digitally using graphics software and programs (**excluding AI programs**) to create T-shirts, banners, posters, CAD drawings and many other items.

DIVISION 584 - DIGITAL ARTS, INDIVIDUAL OR GROUP: This division is for original artwork created digitally using graphics/software programs, (**excluding AI generated**) and must be delivered to the Fairgrounds on Saturday, August 13th. Please remember it is your responsibility to be aware of/follow copyright and licensing laws when creating your Digital Art work. If items are meant to be “hung” in order to be displayed, please follow the rules for the Fine Arts Department. Examples of Graphic Art include:

- Graphic Design piece (clothing/posters, etc.)
- Digital Illustration
- Photo Editing
- Technical Art/CAD drawings

CLASS:

1. Digital Art, individual, specify – Any Youth Ages 14 and under
2. Digital Art, individual, specify – Any Youth Ages 18 and under
3. Digital Art, group, specify – Any Youth Ages 14 and under
4. Digital Art, group, specify – Any Youth Ages 18 and under

Judging Guidelines for Digital Arts

Division 584- Digital Arts, Individual or Group. Each item scored on a scale of 1-10, 10 being highest. Total score possible: 70 of 70.

1. Concept execution
2. Level of detail
3. Workmanship: Accuracy, Line Technique
4. Placement of dimension and views
5. General appearance
6. Art and design
7. Originality of design



Judging guidelines/glossary:

DIGITAL ARTS:

Workmanship: Accuracy, Line Technique = Clean, crisp straight or curved lines, no smudges, obvious erasures

Placement of Dimensions and Views = Perspective and dimensions are correct and accurately reflect real world measurements

General Appearance = Work is clean and well presented in the proper format for the item being submitted

Art and Design = Entry is well thought out, design is clean and recognizable

Originality = Not a common design seen everyday

YOUTH DIGITAL ARTS RULES

1. All digital art entries **must** be produced by **the exhibitor**.
2. Digital Arts is for original artwork created digitally using graphics/software programs.
3. It is the Exhibitors sole responsibility to be aware of/follow copyright and licensing laws when creating your Digital artwork.
4. If items are meant to be “hung,” in order to be displayed, please follow the rules for the Fine Arts Department.

DIVISION 592 – OPEN YOUTH COLORING CONTEST
2024 IMPORTANT ENTRY DATES

OPEN YOUTH COLORING CONTEST					
DIVISION	ENTRIES CLOSE	DIVISION	ENTRY RECEIVING	DIVISION	ENTRY JUDGING
N		N		N	
ALL	12 midnight/SUNDAY AUG 18 online MUST ENTER ONLINE FOR ENTRY TO BE ACCEPTED	ALL	By 5:00PM MON AUG 19 Fair Office NO LATE ENTRIES WILL BE ACCEPTED	ALL	TBD/WEDS AUG 21 Expo Hall

COLORING PAGE AVAILABLE ONLINE

ENTRY FEE PER ENTRANT: No entry fee, one entry per person

PREMIUMS OFFERED PER CLASS: Participant ribbon for all entries

ONE PARTICIPANT WILL BE RANDOMLY DRAWN FOR A SPECIAL PRIZE

RULES:

1. Coloring page is available online or at the Fair Office
2. One entry per person
3. Entry entitles the entrant to one discounted Carnival ride ticket
4. **Entrant must have registered online to be eligible for the discount.** *Any entrant already eligible for a discounted ticket through the Livestock program is not eligible for any additional discount*
5. Entrant must include child's name, class number, contact name and telephone number
6. Entry must be prepared by the exhibitor
7. No late entries will be accepted

CLASS:

1. Pre K
2. K- 5th Grade
3. 6 - 8th Grade
4. 9th – 12th Grade