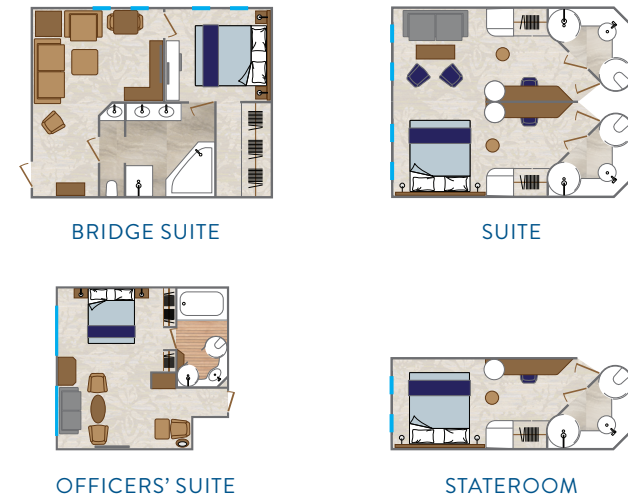
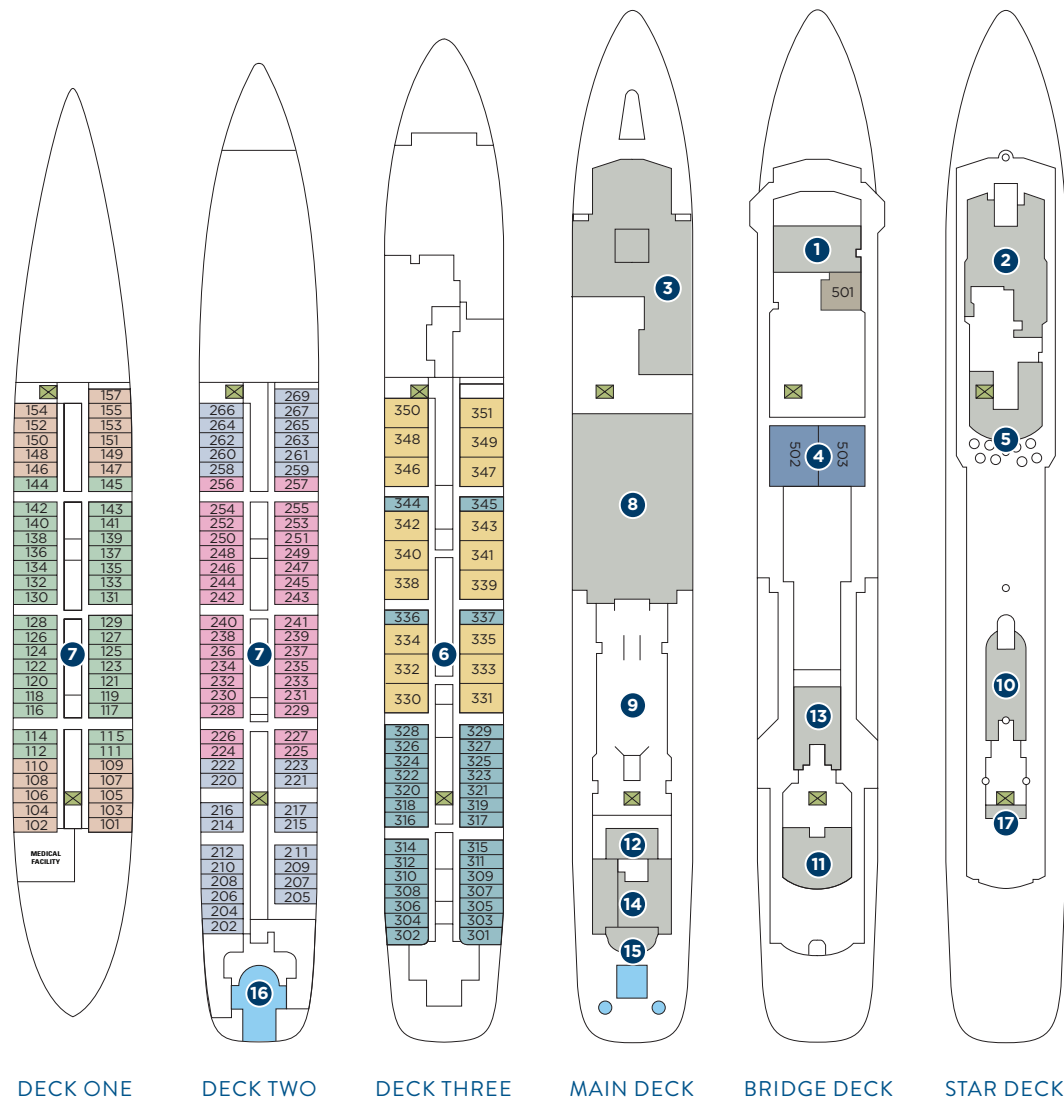


WIND SURF

WORLD'S LARGEST SAILING SHIP



STATEROOMS & SUITES

Bridge Suites: 495 square feet (46 square meters)

Officers' Suite: 242 square feet (22.5 square meters), 1 bathroom

Suites: 376 square feet (35 square meters), 2 bathrooms

Staterooms: 188 square feet (18 square meters)

Staterooms with 3rd Berths: 117-140; all suites

Staterooms with One Queen Size Bed Only (no twin option): 101, 102, 157, 202, 204, 269, 301-302, 303-304

ONBOARD SPACES

- | | | | |
|-------------------------|---------------------|---------------------------------|-------------------|
| 1 Bridge | 7 Staterooms | 13 World Spa by Windstar | Bridge Suites |
| 2 Stella Bistro | 8 Lounge | 14 Star Boutique | Officers' Suite |
| 3 Amphora Restaurant | 9 Yacht Club Café | 15 Pool / Pool Bar / Whirlpools | Suites |
| 4 Bridge Suites | 10 Fitness Center | 16 Watersports Platform | Category TX |
| 5 Veranda/Candles | 11 Compass Rose Bar | 17 Terrace Bar | Category AX |
| 6 Suites and Staterooms | 12 Reception | | Category A |
| | | | Category BX |
| | | | Category B |
| | | | Public Spaces |
| | | | Stairs / Elevator |

SHIP FACTS

GUEST CAPACITY: 342

GUEST DECKS: 6

CREW MEMBERS: 210

LENGTH: 535 feet (162 meters) at waterline; 619 feet (188.8 meters) including bowsprit

DRAFT: 16.5 feet (5 meters)

TONNAGE: 14,745 gross registered tons (grt)

BEAM: 66 feet (20 meters)

SAILS: 7 triangular, self-furling, bridge-operated sails with 26,881 square feet (2,600 square meters) of Dacron surface area

MASTS: 5 at 221 feet (67.5 meters)

ENGINES: 4 diesel electric generator sets, 2 electrical propulsion motors

SPEED: 10 to 12 knots with engines only; up to 15 knots with prevailing wind

SHIP'S REGISTRY: Bahamas



• Access to board ship is via stairs only.
 • Access to/from outside deck may require assistance with doors and thresholds.

Illustrations are representative only. Actual layout of ships may vary slightly.