

AGPROfessionals

DEVELOPERS OF AGRICULTURE

County Road 19 Ft. Lupton, CO Building Lots

DESCRIPTION: These 35+/- acre lots have excellent views and are ideal for new home building, grazing, or recreation. They are located just east of Firestone and minutes from Interstate 25 with paved road access for each parcel.

MINERALS: Seller shall retain all mineral rights

ZONED: Ag

LEGAL: Lots 4-8 located in Section 10, Township 2 North, Range 67 West. Property specific legal descriptions will be available pending completion.

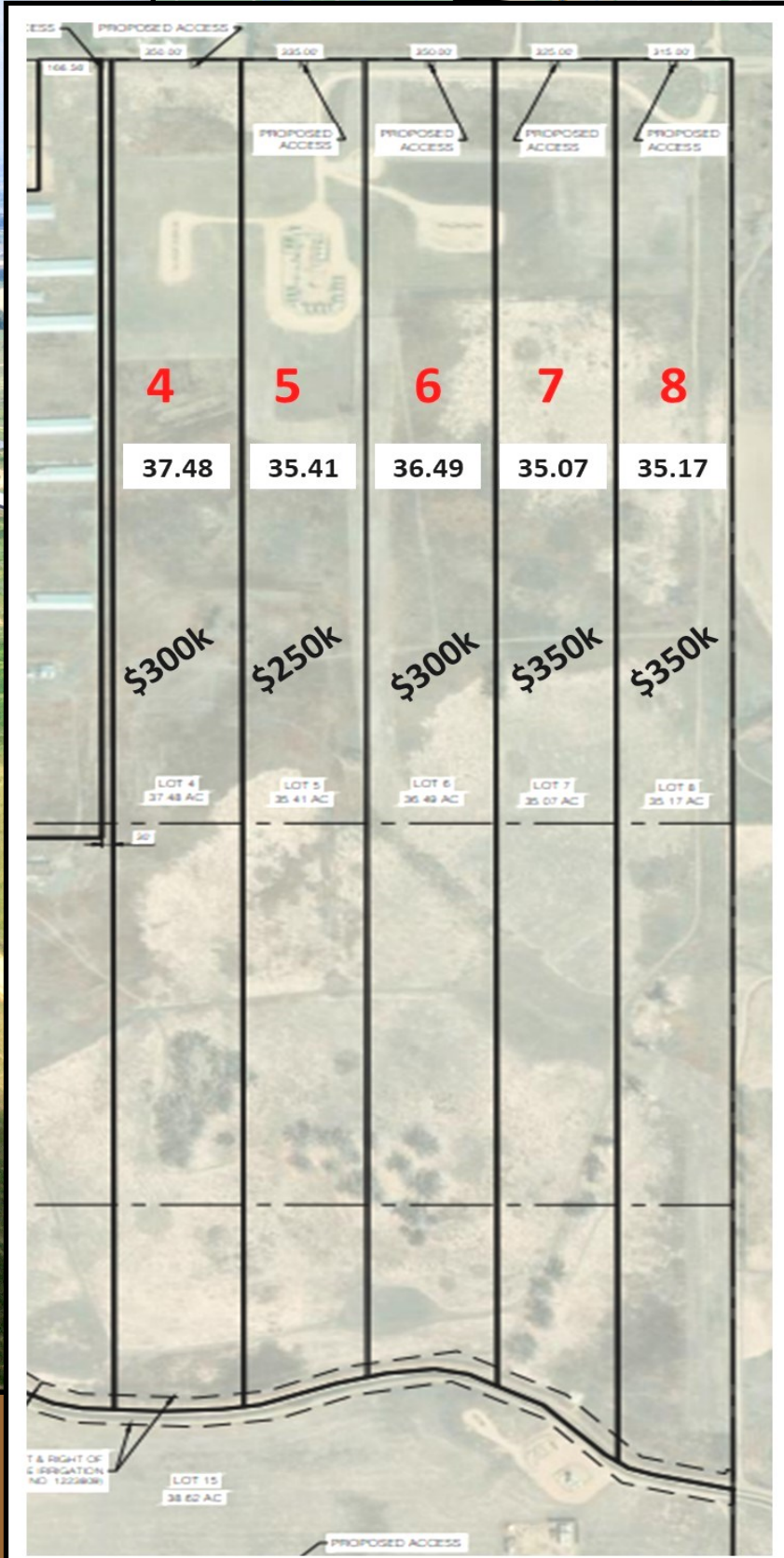
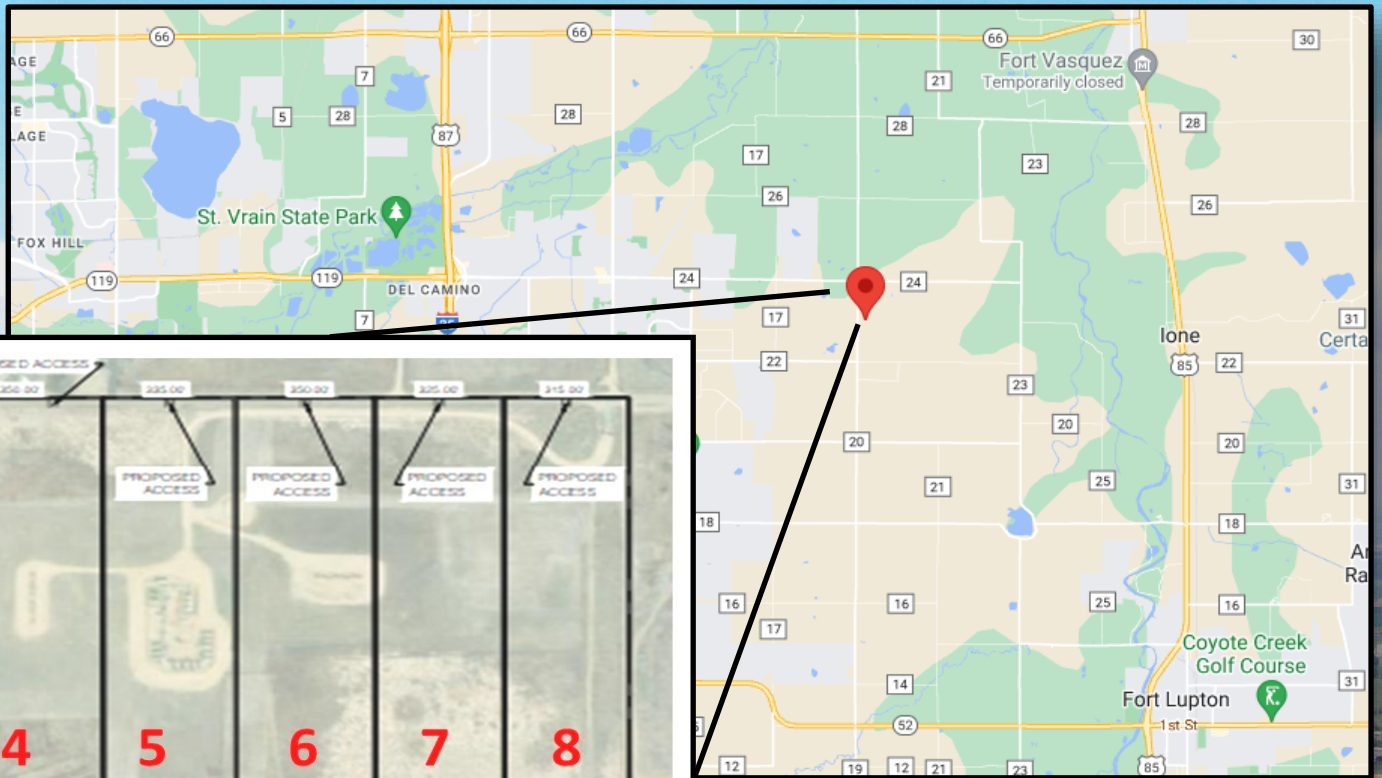


**RYAN
HOSTETLER**
Accredited Land Consultant

AGPROS.COM
3050 67th Avenue, Greeley, CO

303.883.7080 Ryan@Agpros.com

The information contained in this brochure is from reliable sources and is believed to be correct, but is NOT guaranteed.



From Hwy 119/I-25 (CR 24) east to CR 19 then continue east approximately 3/4 mile, properties are located on the south side of County Road 24.