



## Product Data Sheet

### Product Name:

Tecpan™  
Structural Metal Insulated Panel

### Manufacturer:

Columbia Architectural Products, Inc.  
10722 Tucker Street  
Beltsville, Maryland 20705  
phone: (301) 937-4383  
fax: (301) 937-6850  
web: [www.tecpan.com](http://www.tecpan.com)

### Panel Description:

The Tecpan™ panel is a formed composite utilizing two brake formed pans pressed within one another and fastened to framing or other substrate through the back sheet with clips. Available in various standard or custom configurations in aluminum or stainless steel.

Typically these panels are mounted to the face of a building utilizing a hanging clip with a rod & caulk joint application, or can also be used in place of glass in aluminum glazing / storefront channels. With this option an offset panel is also offered to bring the panel flush with the window mullions. No mechanical fasteners or adhesives are needed.

### Stock CAP-Clad™ Color Selection:

#### Kynar 500® Solid Colors (20 Year Finish Warranty)



#### Kynar 500® Metallic Colors (20 Year Finish Warranty)



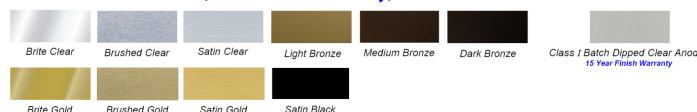
#### Polyester DuraCoat® (10 Year Finish Warranty)



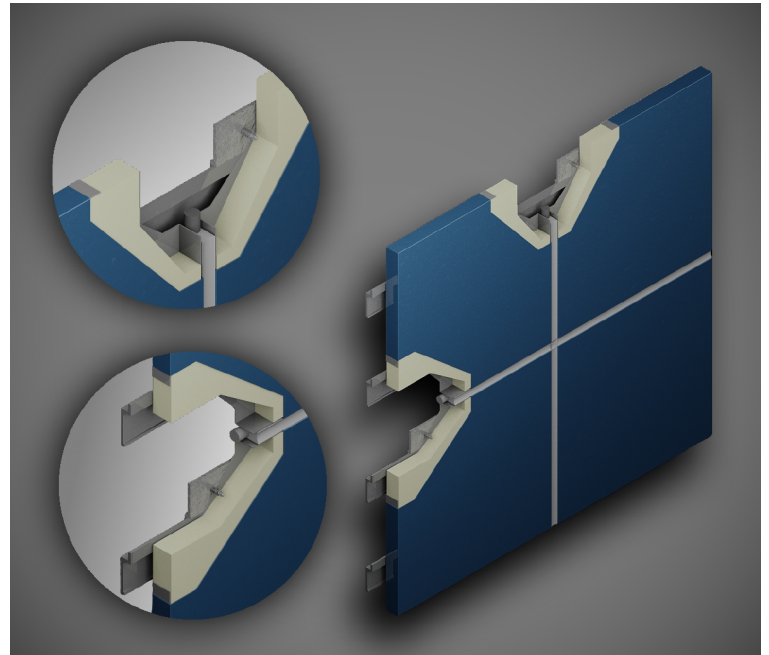
#### Stucco Embossed (10 Year Finish Warranty)



#### Coil Coat Anodize Colors (5 Year Finish Warranty)



Actual Colors may vary from those shown above.  
Samples are available upon request. Call 866-583-2726



### Panel Composition:

Our standard 1" panel is made up of an .040 aluminum color face, Extruded Polystyrene core, and a mill/random finished aluminum back pan, which fits into the face pan. This panel offers an R value of 5.20. Add an additional R value of 5.00 per each 1" core thickness.

### Available Options:

- \* Thickness range from 1" to 3" and more @ 1/2" increments.
- \* #4 or #8 polished Stainless Steel Finishes
- \* Polyisocyanurate Foam (ISO) Core for a greater R value
- \* Plywood (PW) Core, offering impact resistance
- \* 4mm Cement Board (4mmCB), offering greater impact resistance

### Features & Benefits:

Tecpan™ panels offer the ability to add a greater R value to your building envelope.

Because all edges of this pan-in-pan assembly are permanently sealed, this panel is virtually unaffected by moisture.

Our standard colors offer beauty and durability with a coil coated Kynar 500® finish. Both solid and metallic colors come with a 20 year finish warranty and little to no maintenance is required.

The Tecpan™ panel is an economical alternative to other panel solutions. With a wide variety of material compositions available, we offer the ability to customized any panel to meet your needs.

