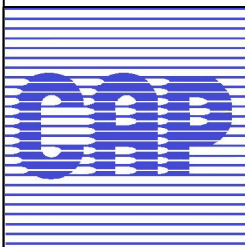
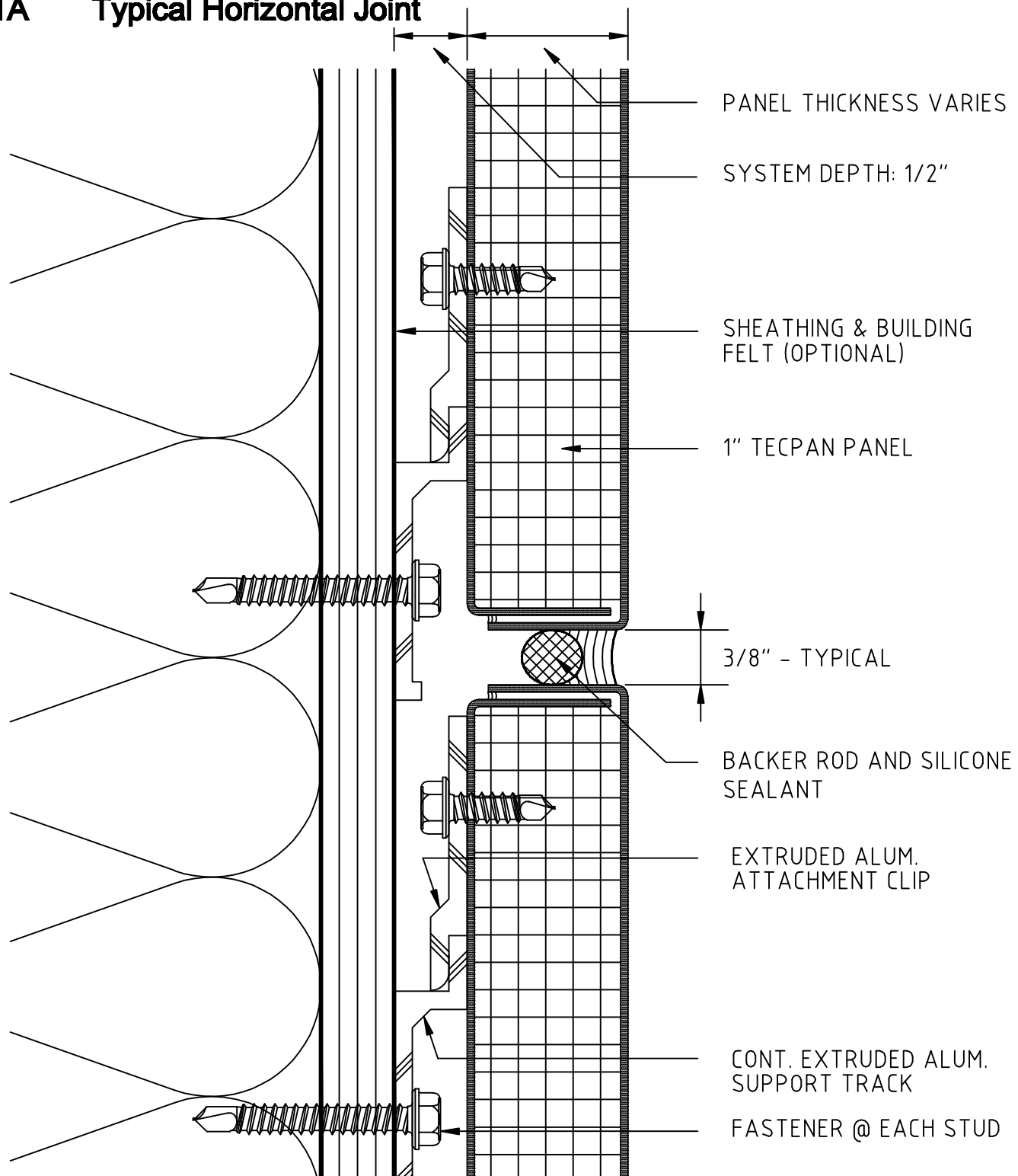


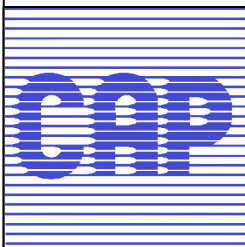
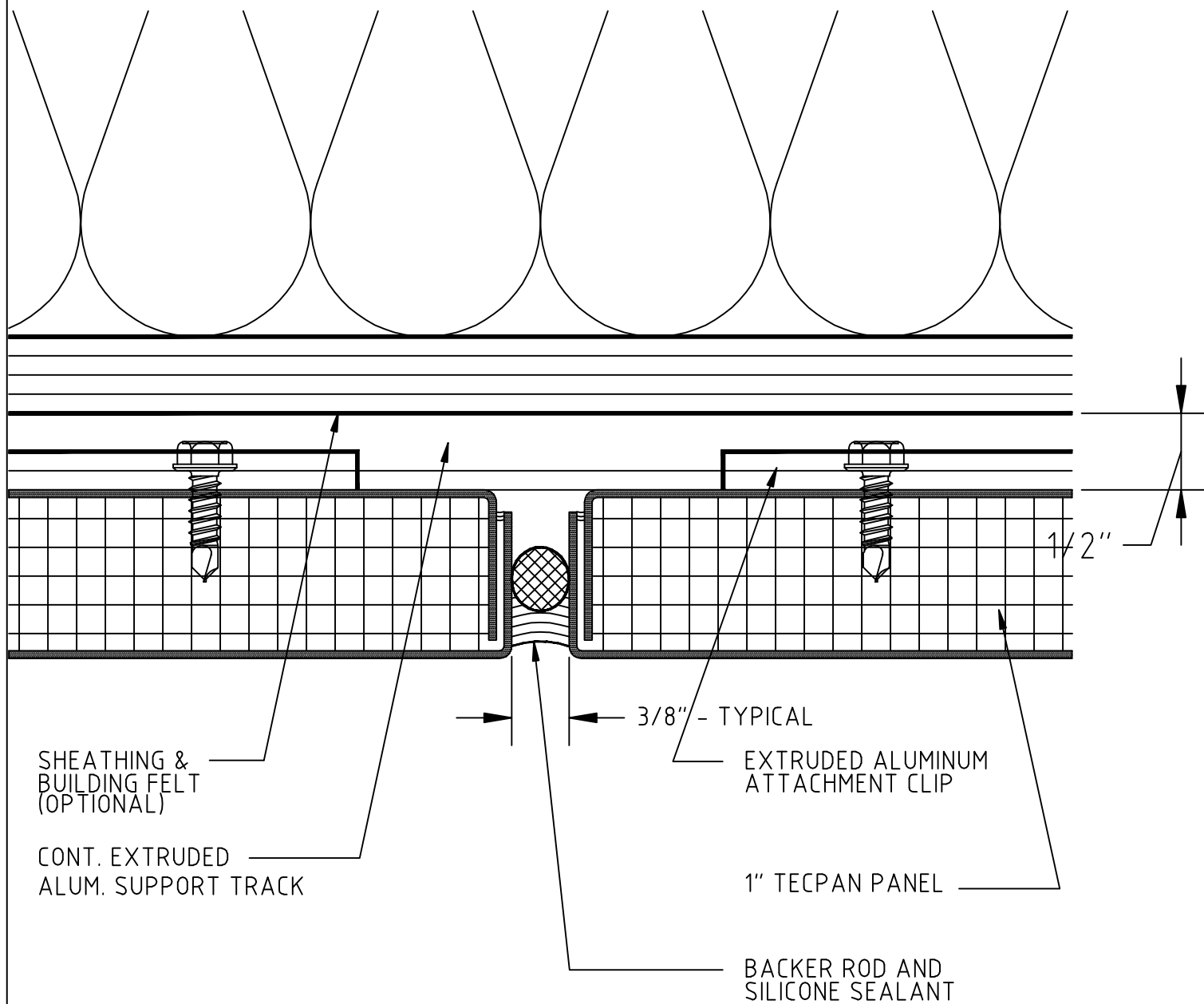
## 1A Typical Horizontal Joint



**Columbia Architectural Products, Inc.**  
10722 Tucker Street  
Beltsville, MD 20705  
Tel: 301-937-4383  
Fax: 301-937-6850

**Tecpan<sup>TM</sup>**  
**Architectural Panel Systems**

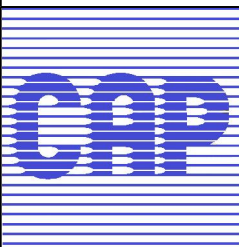
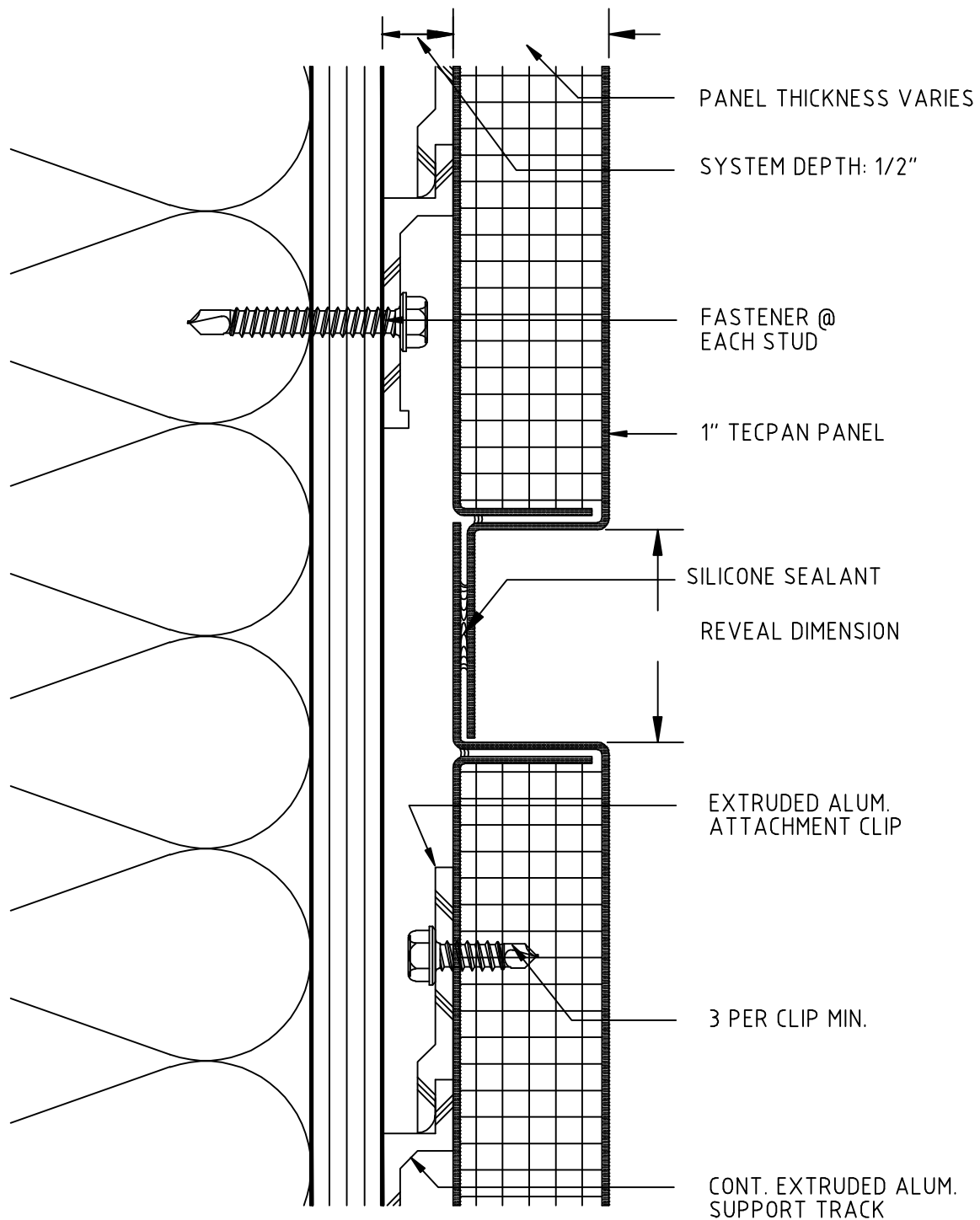
## 1B Typical Vertical Joint



**Columbia Architectural Products, Inc.**  
10722 Tucker Street  
Beltsville, MD 20705  
Tel: 301-937-4383  
Fax: 301-937-6850

**Tecpan<sup>TM</sup>**  
**Architectural Panel Systems**

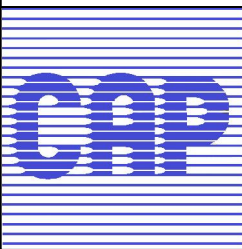
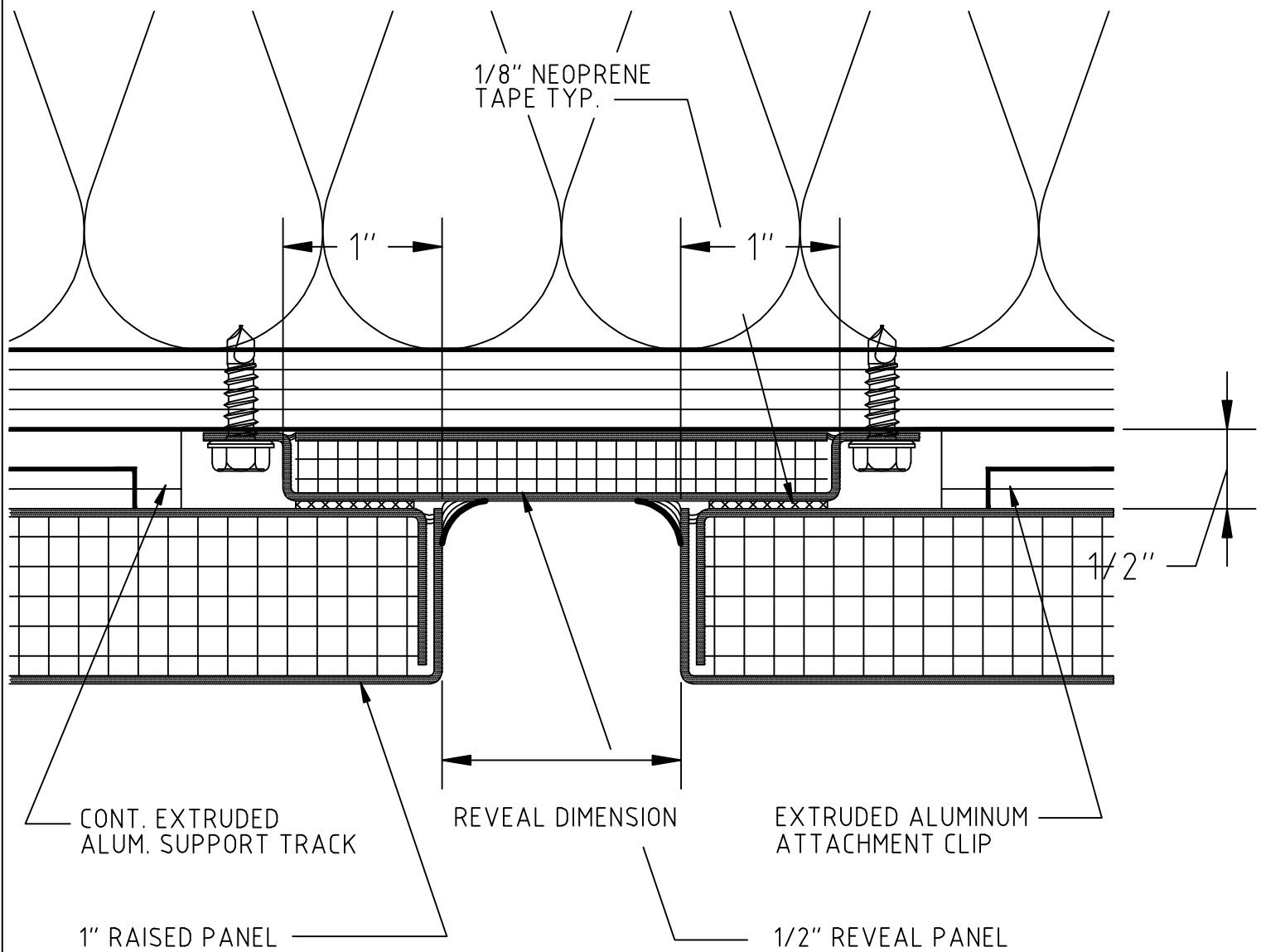
## 1C Typical Horizontal Reveal joint



**Columbia Architectural Products, Inc.**  
10722 Tucker Street  
Beltsville, MD 20705  
Tel: 301-937-4383  
Fax: 301-937-6850

**Tecpan<sup>TM</sup>**  
**Architectural Panel Systems**

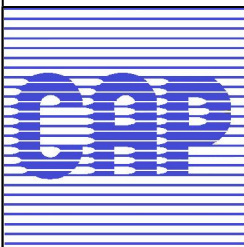
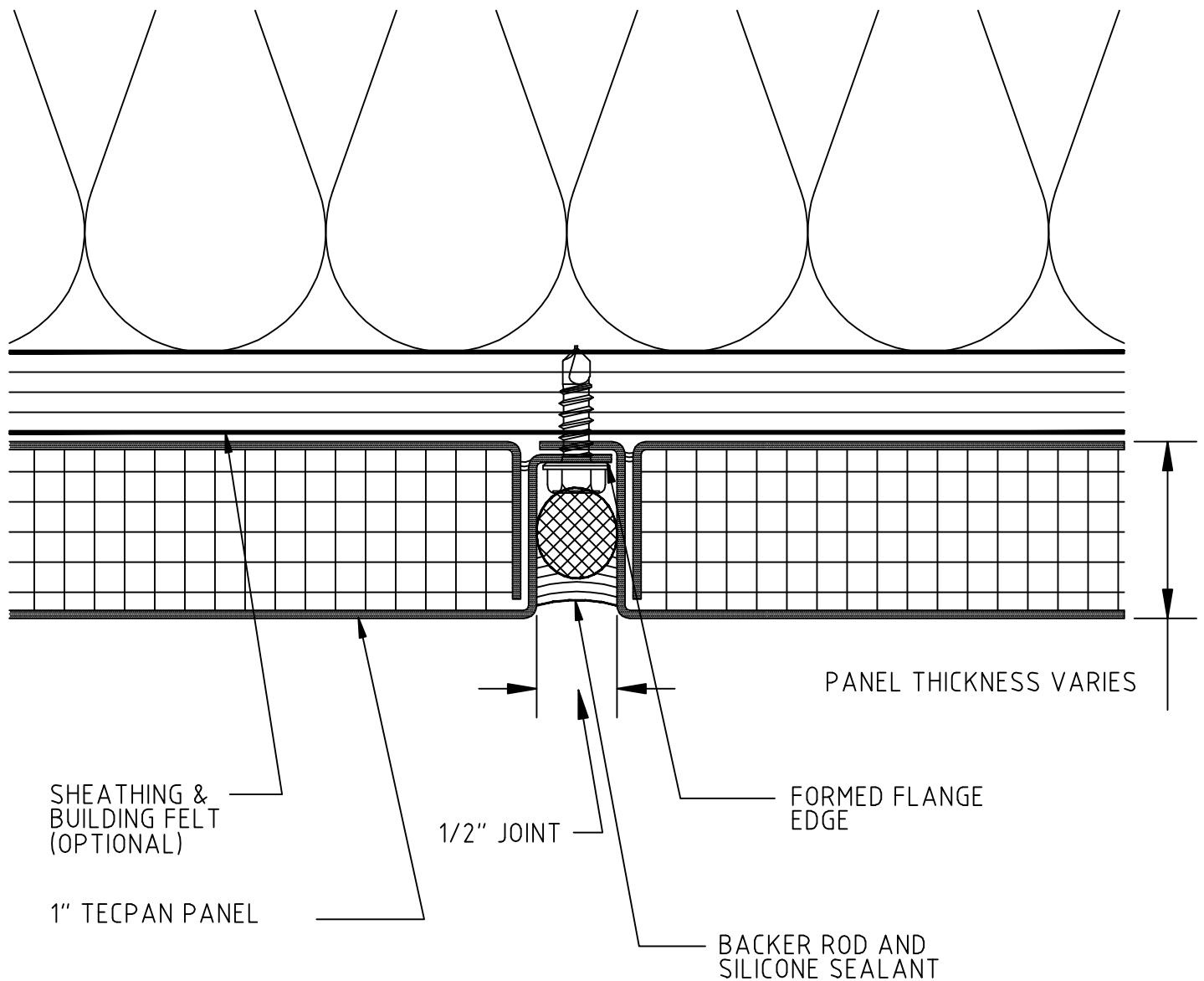
## 1D Typical Vertical Reveal Joint



**Columbia Architectural Products, Inc.**  
10722 Tucker Street  
Beltsville, MD 20705  
Tel: 301-937-4383  
Fax: 301-937-6850

**Tecpan<sup>TM</sup>**  
**Architectural Panel Systems**

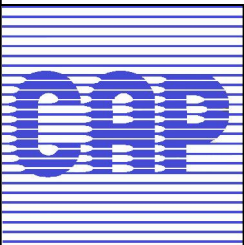
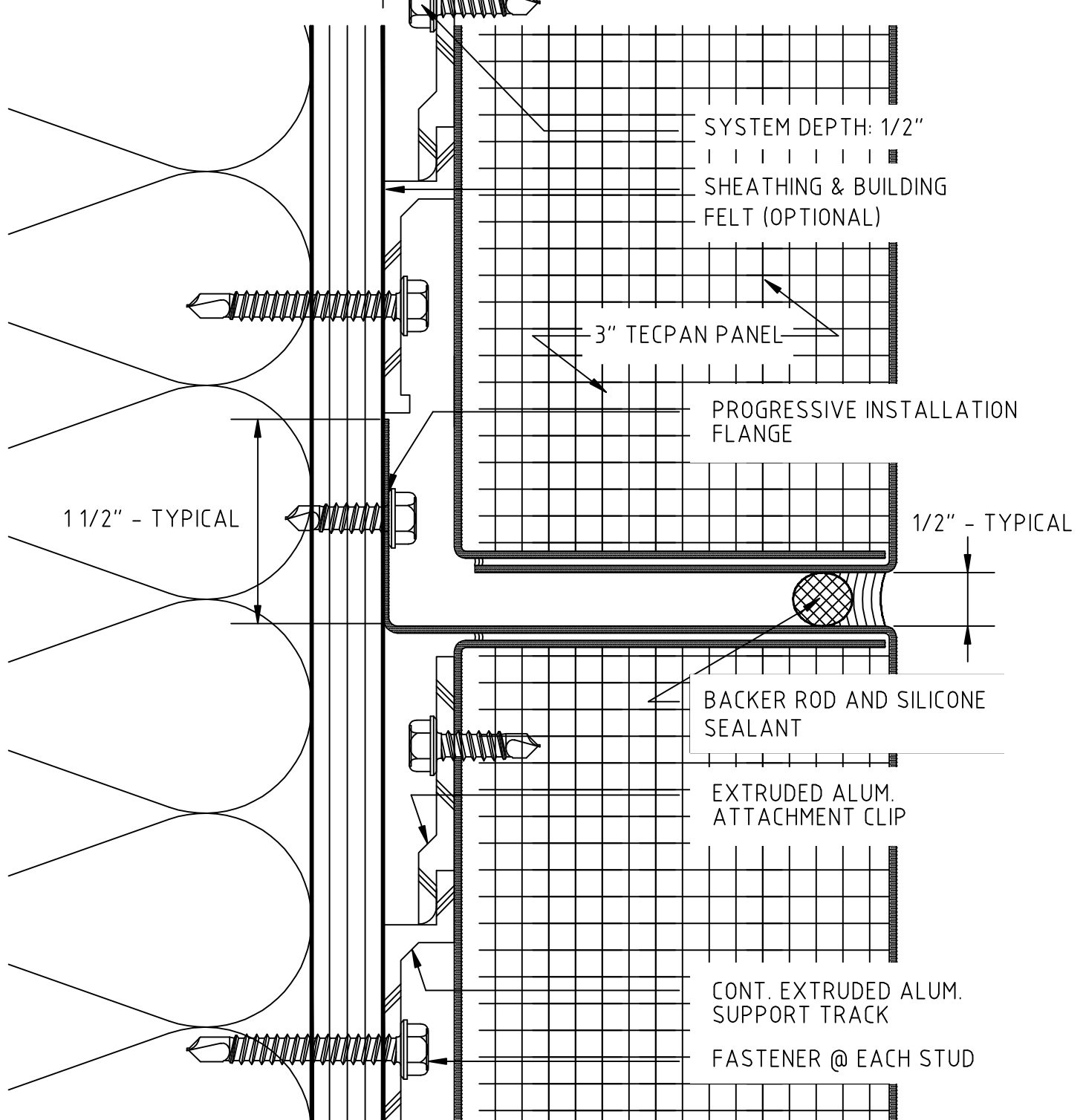
## 1E Typical Hat Panel Joint



Columbia Architectural Products, Inc.  
10722 Tucker Street  
Beltsville, MD 20705  
Tel: 301-937-4383  
Fax: 301-937-6850

**Tecpan**<sup>TM</sup>  
Architectural Panel Systems

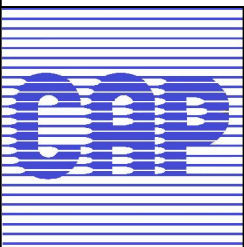
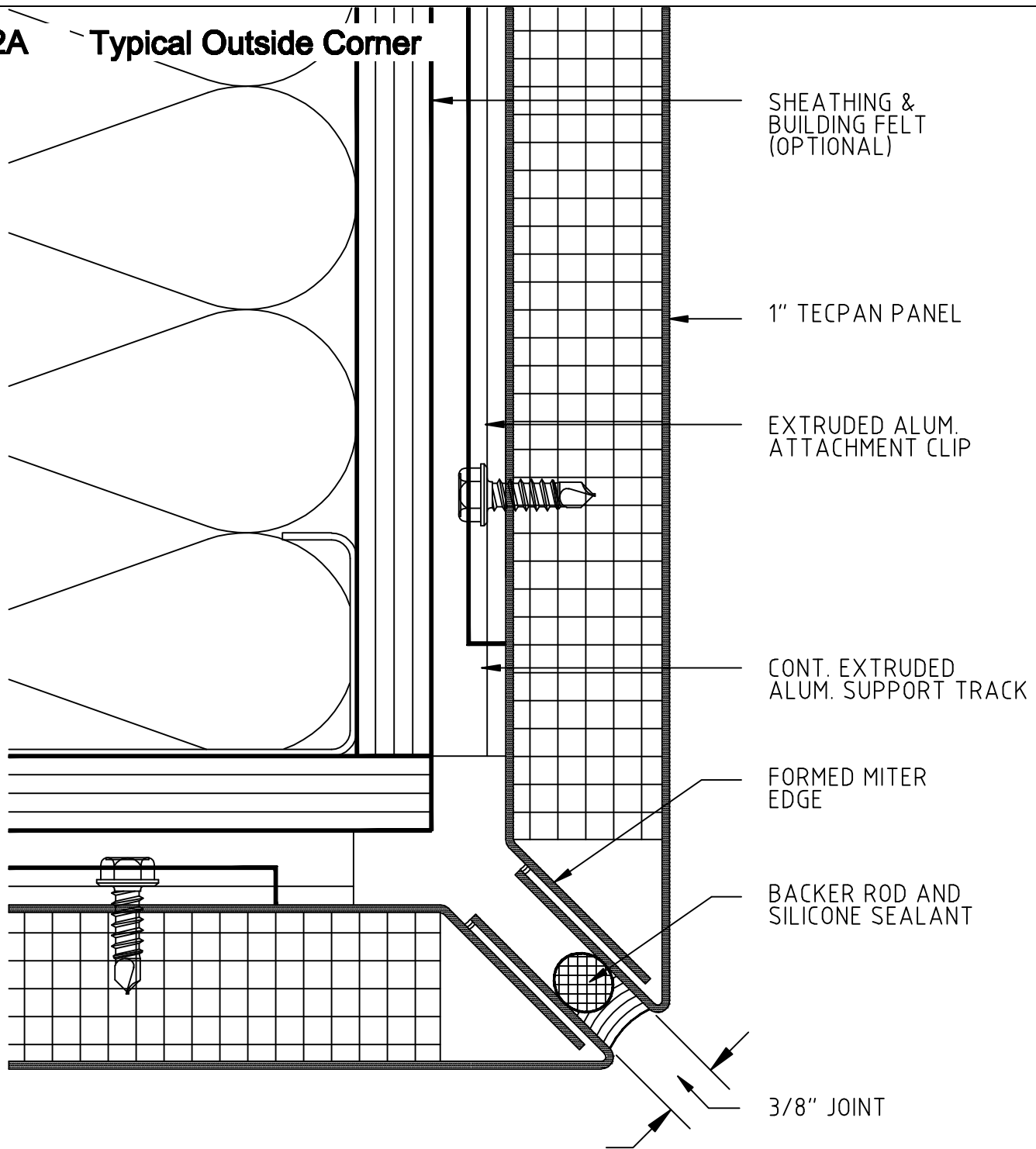
## 1F Progressive Installation Horizontal Joint



**Columbia Architectural Products, Inc.**  
10722 Tucker Street  
Beltsville, MD 20705  
Tel: 301-937-4383  
Fax: 301-937-6850

**Tecpan<sup>TM</sup>**  
**Architectural Panel Systems**

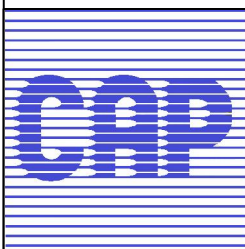
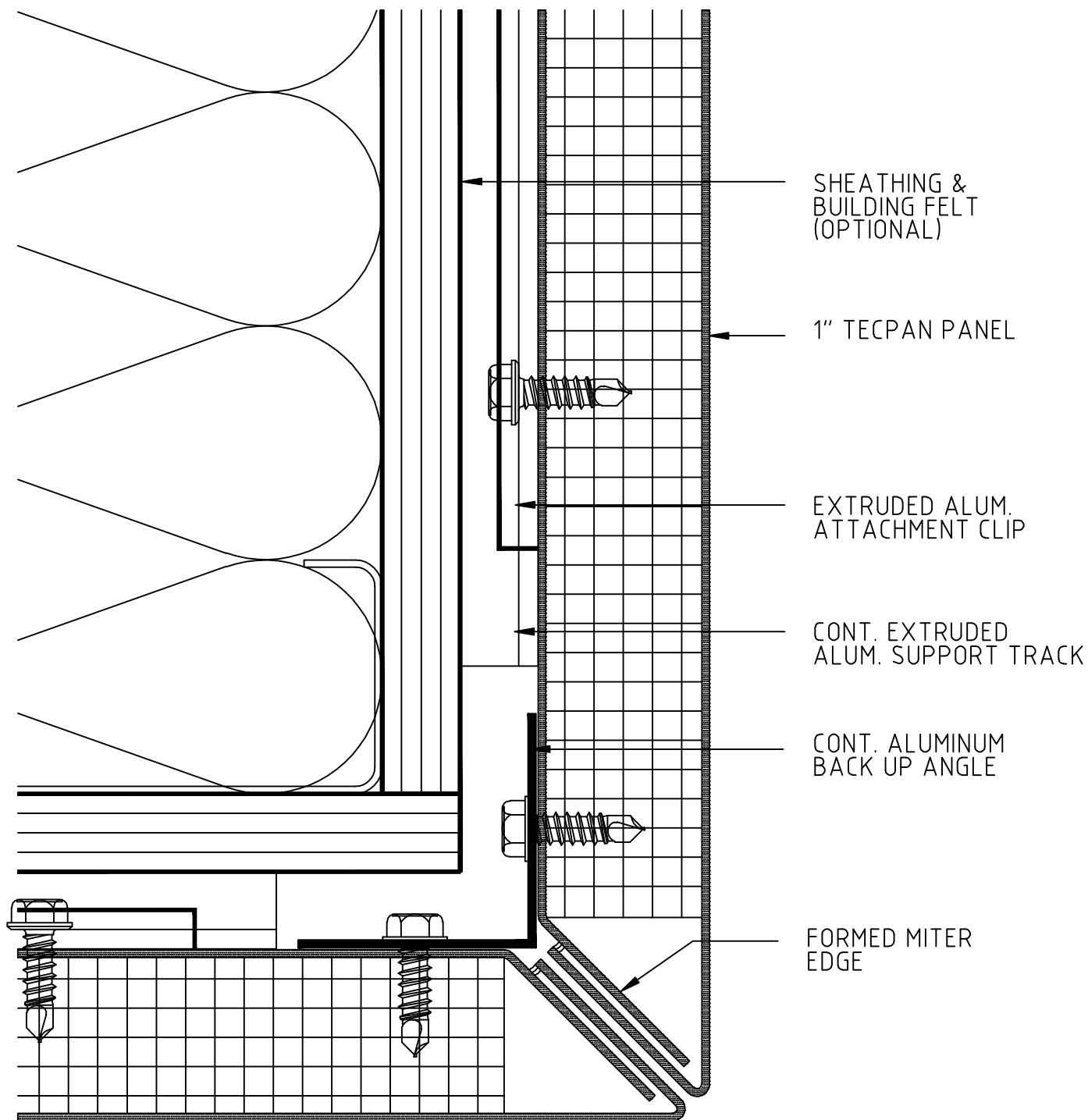
2A Typical Outside Corner



Columbia Architectural Products, Inc.  
10722 Tucker Street  
Beltsville, MD 20705  
Tel: 301-937-4383  
Fax: 301-937-6850

**Tecpan**<sup>TM</sup>  
Architectural Panel Systems

## 2B Typical Outside Corner

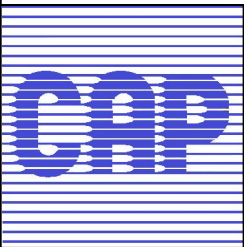
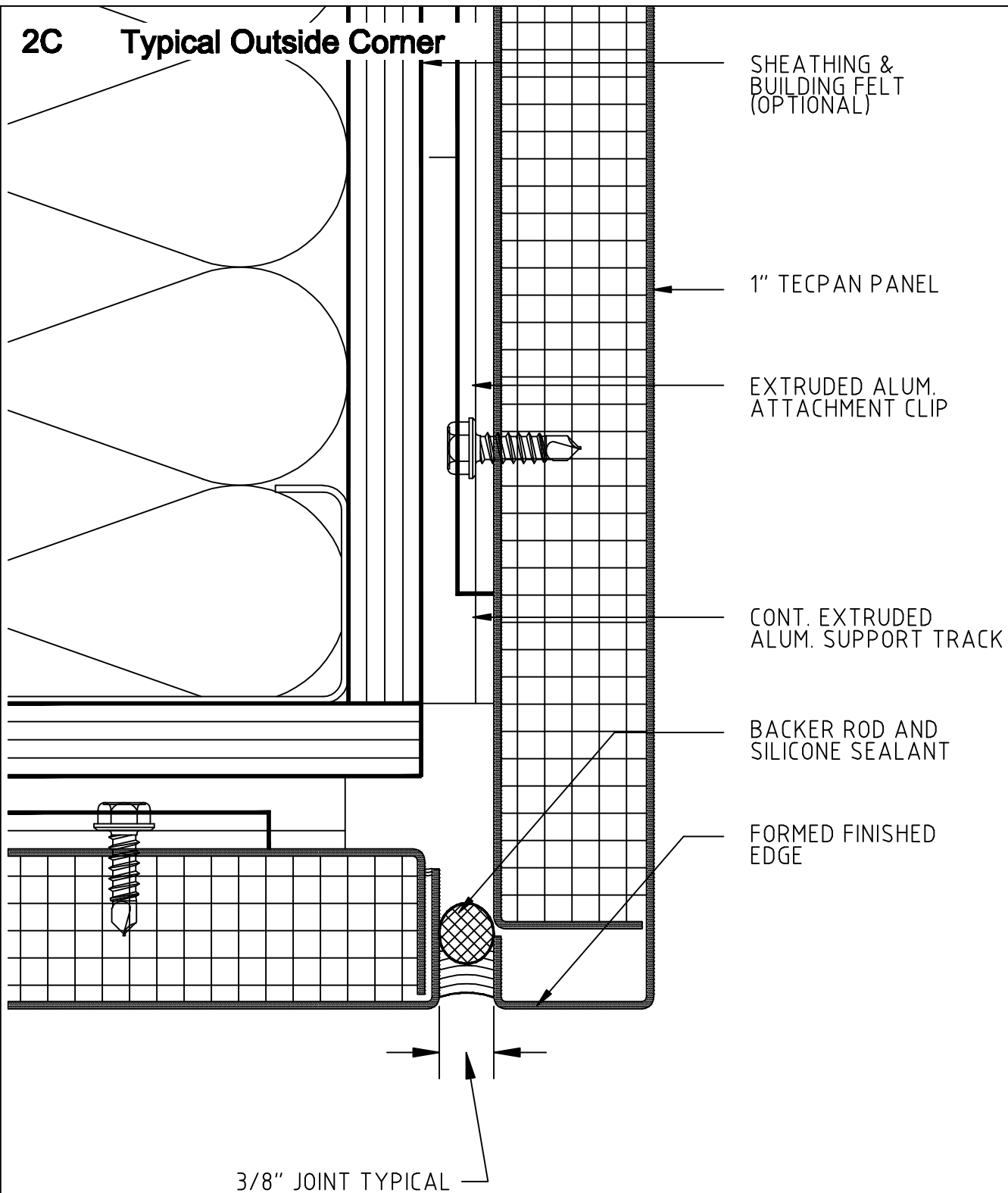


Columbia Architectural Products, Inc.  
10722 Tucker Street  
Beltsville, MD 20705  
Tel: 301-937-4383  
Fax: 301-937-6850

**Tecpan**<sup>TM</sup>  
Architectural Panel Systems



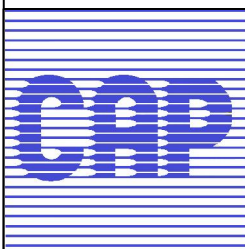
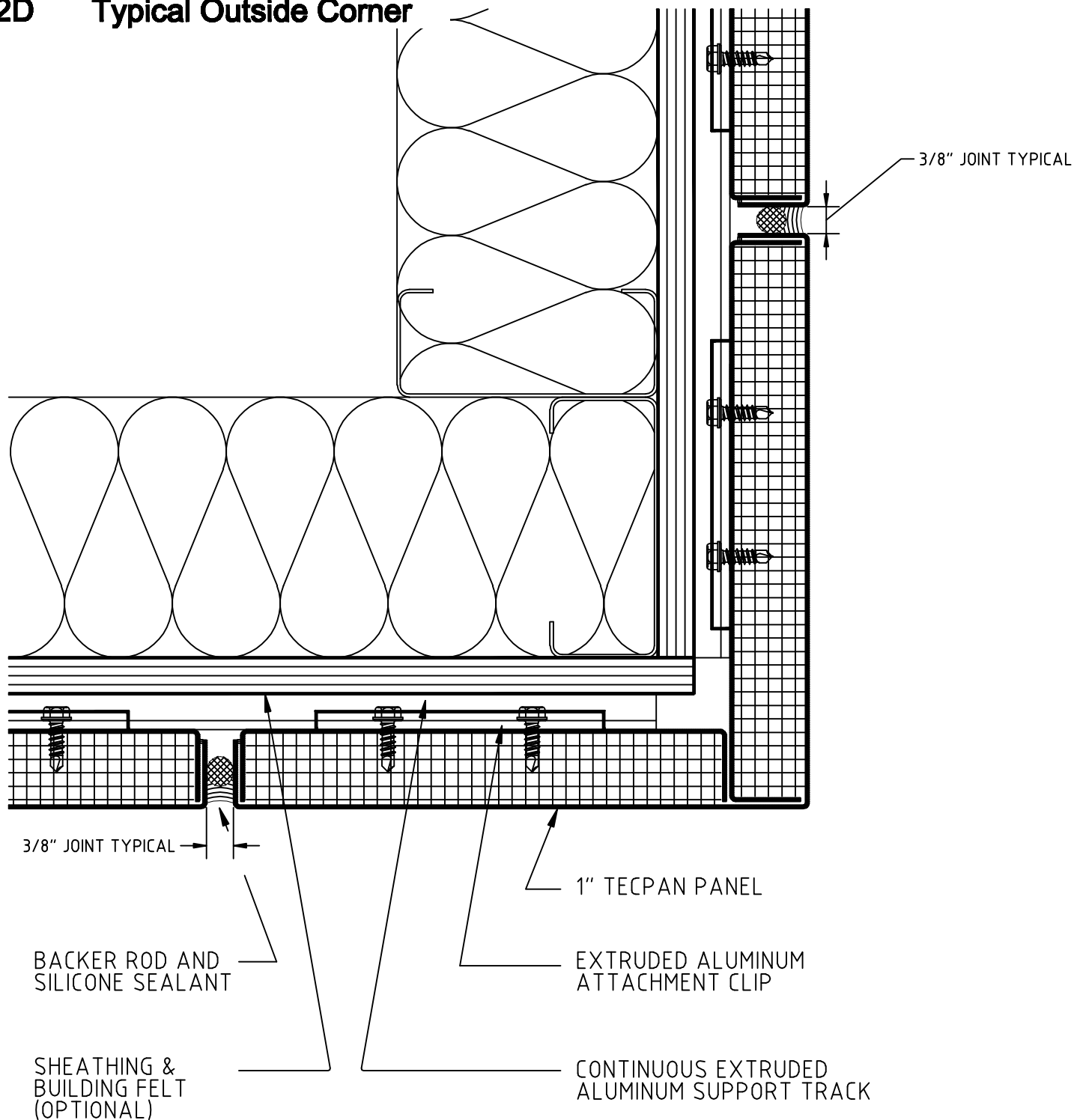
**2C Typical Outside Corner**



**Columbia Architectural Products, Inc.**  
10722 Tucker Street  
Beltsville, MD 20705  
Tel: 301-937-4383  
Fax: 301-937-6850

**Tecpan<sup>TM</sup>**  
**Architectural Panel Systems**

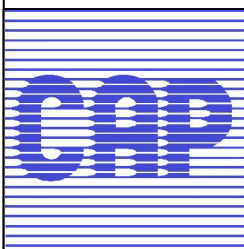
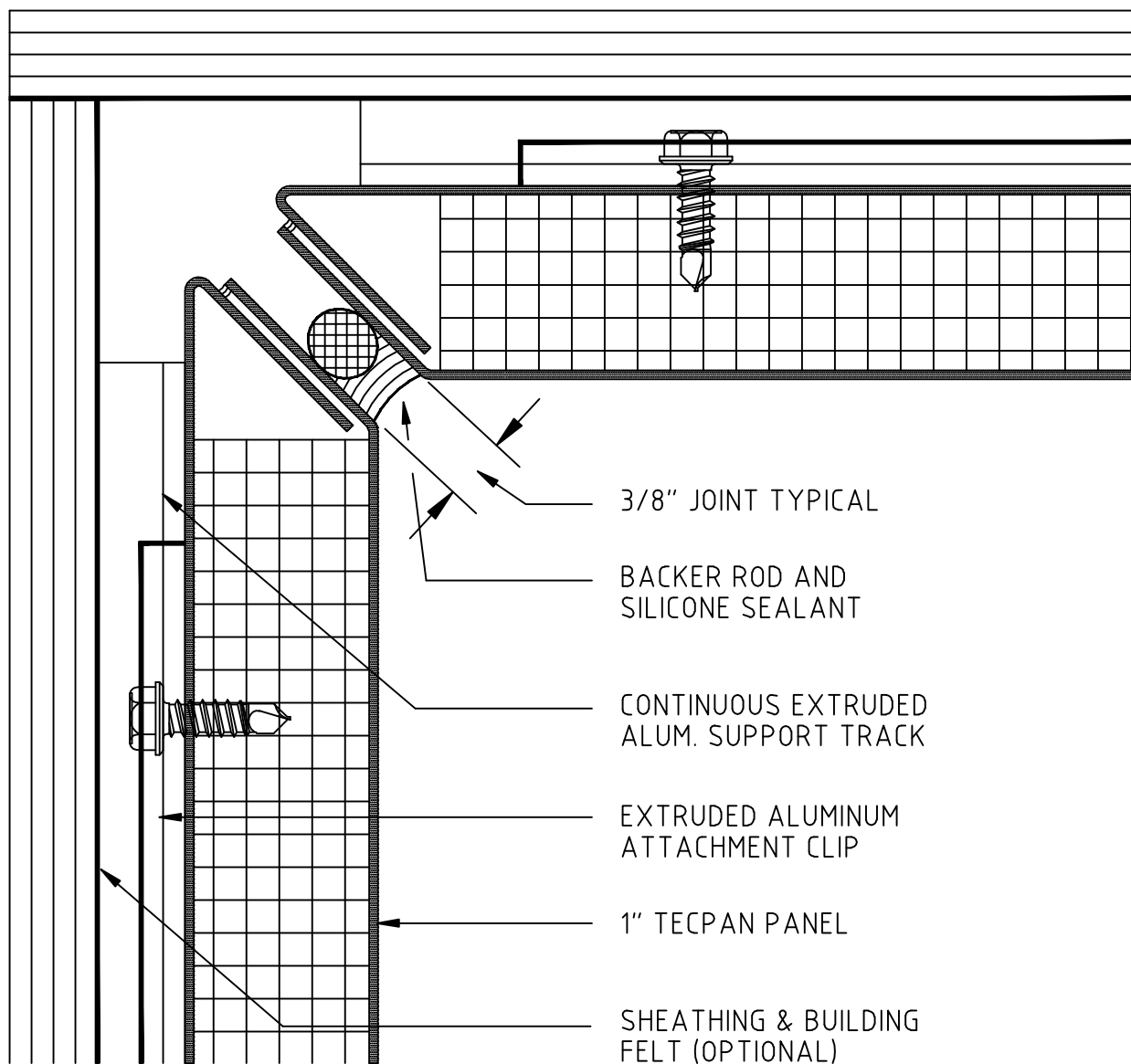
## 2D Typical Outside Corner



**Columbia Architectural Products, Inc.**  
10722 Tucker Street  
Beltsville, MD 20705  
Tel: 301-937-4383  
Fax: 301-937-6850

**Tecpan<sup>TM</sup>**  
Architectural Panel Systems

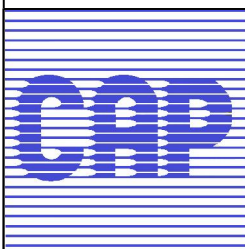
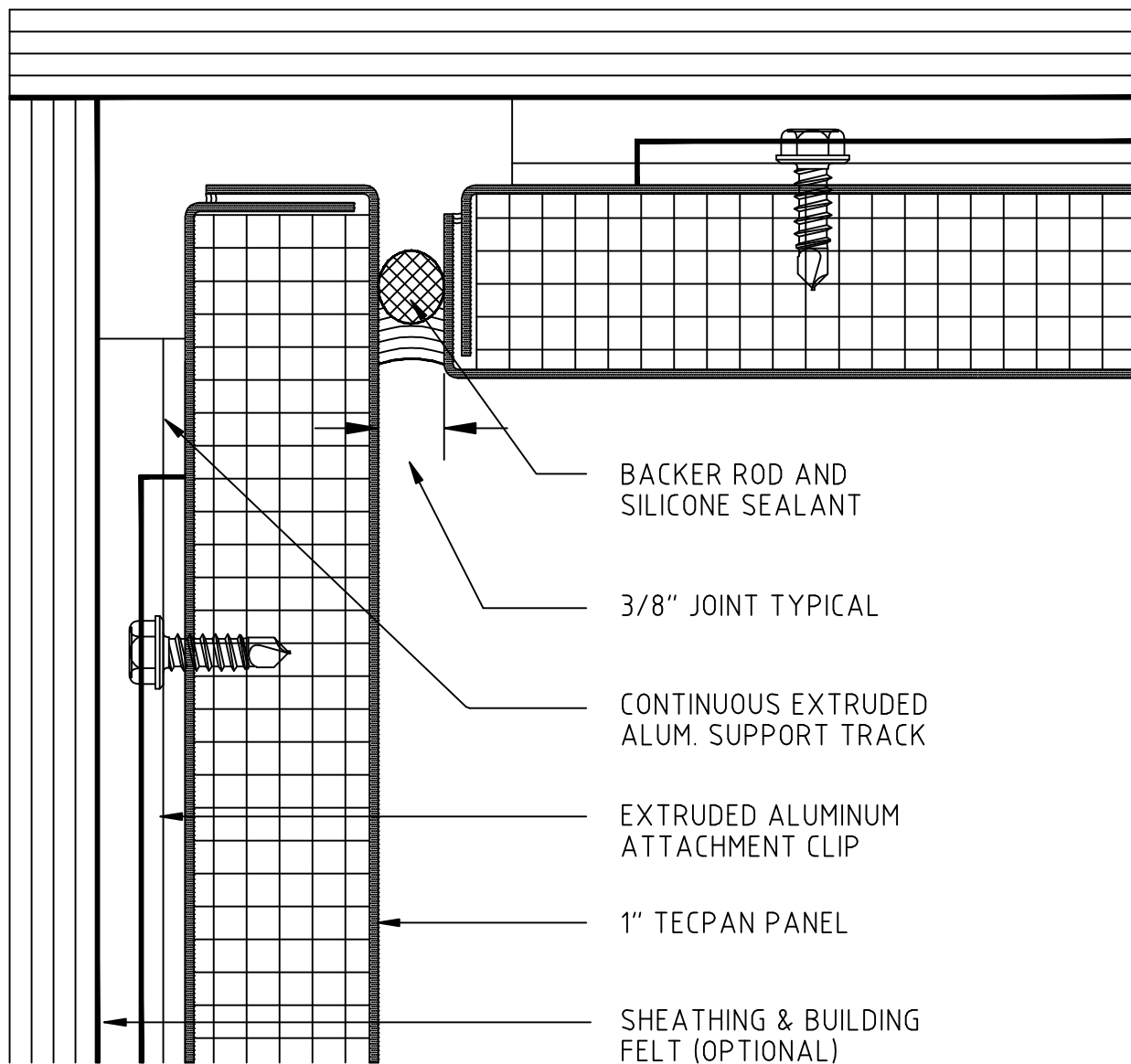
### 3A Typical Inside Corner



Columbia Architectural Products, Inc.  
10722 Tucker Street  
Beltsville, MD 20705  
Tel: 301-937-4383  
Fax: 301-937-6850

**Tecpan**<sup>TM</sup>  
Architectural Panel Systems

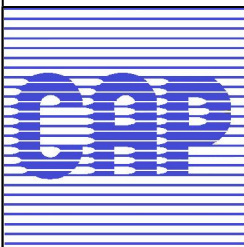
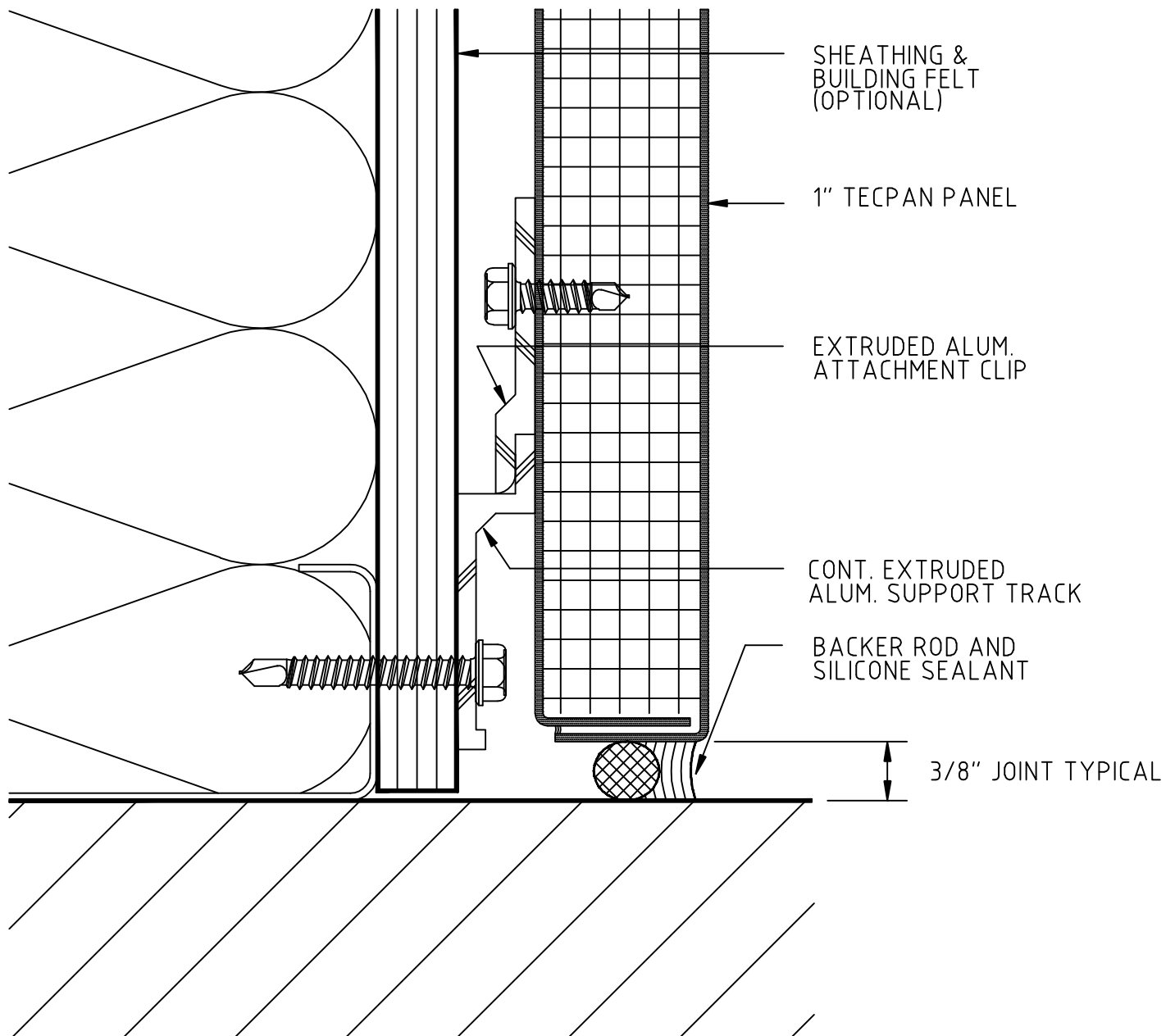
### 3B Typical Inside Corner



Columbia Architectural Products, Inc.  
10722 Tucker Street  
Beltsville, MD 20705  
Tel: 301-937-4383  
Fax: 301-937-6850

**Tecpan**<sup>TM</sup>  
Architectural Panel Systems

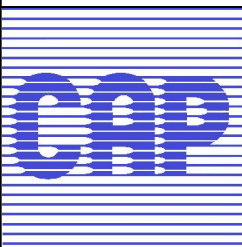
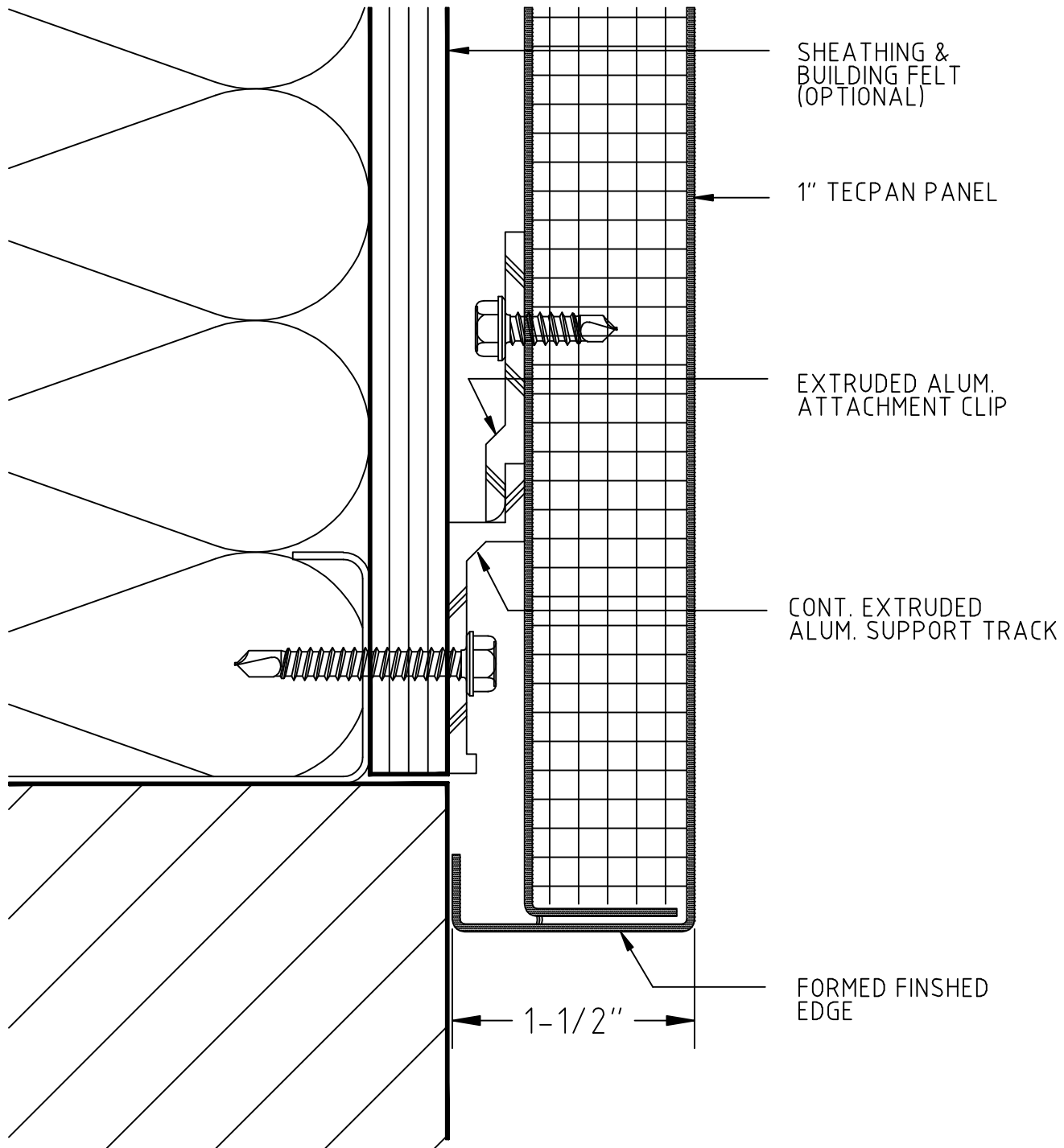
## 4A Typical Sill



Columbia Architectural Products, Inc.  
10722 Tucker Street  
Beltsville, MD 20705  
Tel: 301-937-4383  
Fax: 301-937-6850

**Tecpan**<sup>TM</sup>  
Architectural Panel Systems

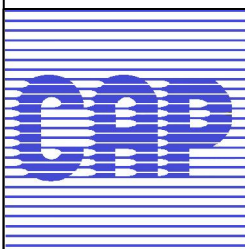
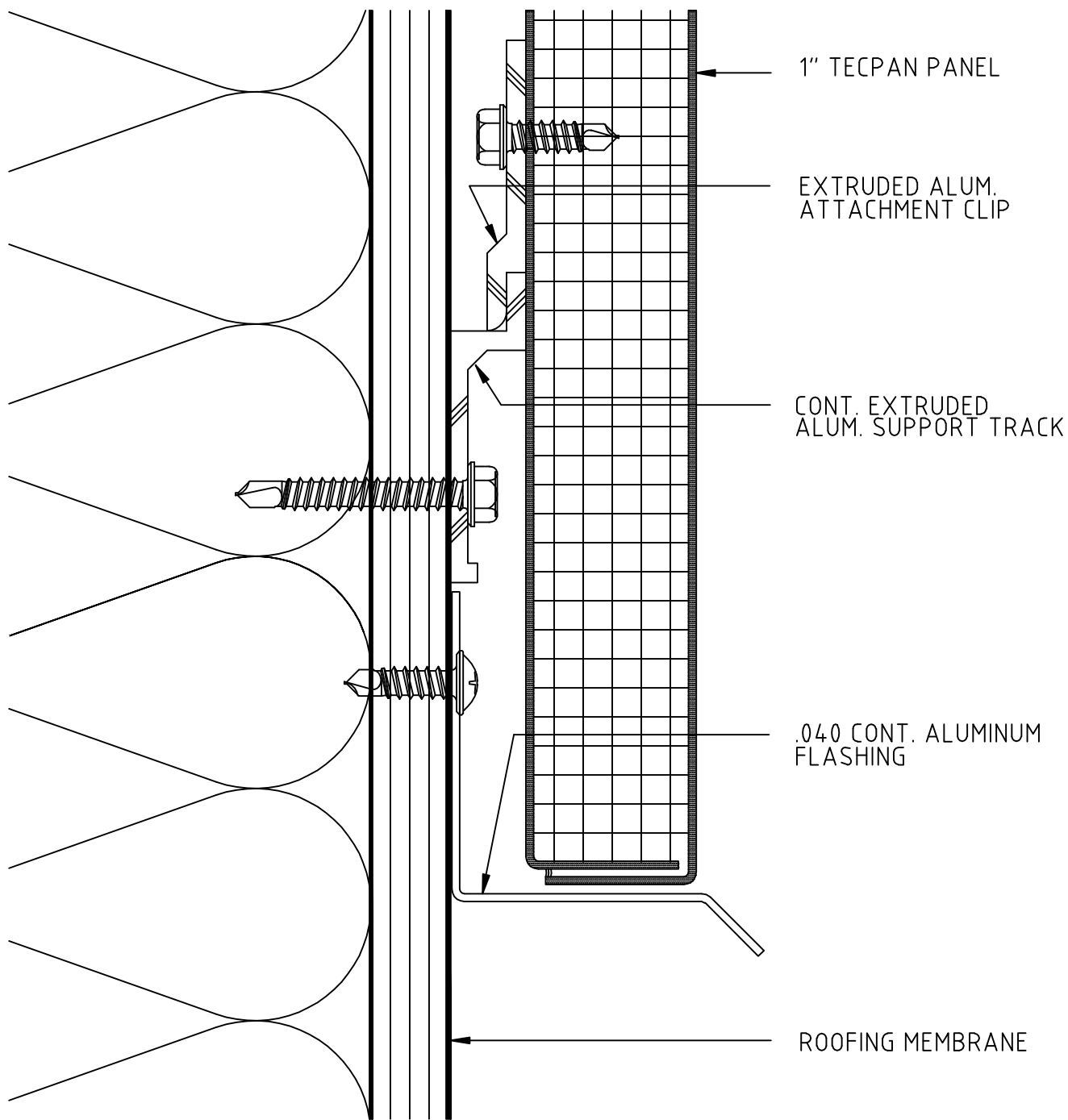
## 4B Typical Sill



Columbia Architectural Products, Inc.  
10722 Tucker Street  
Beltsville, MD 20705  
Tel: 301-937-4383  
Fax: 301-937-6850

**Tecpan**<sup>TM</sup>  
Architectural Panel Systems

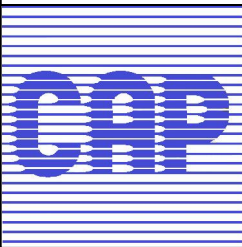
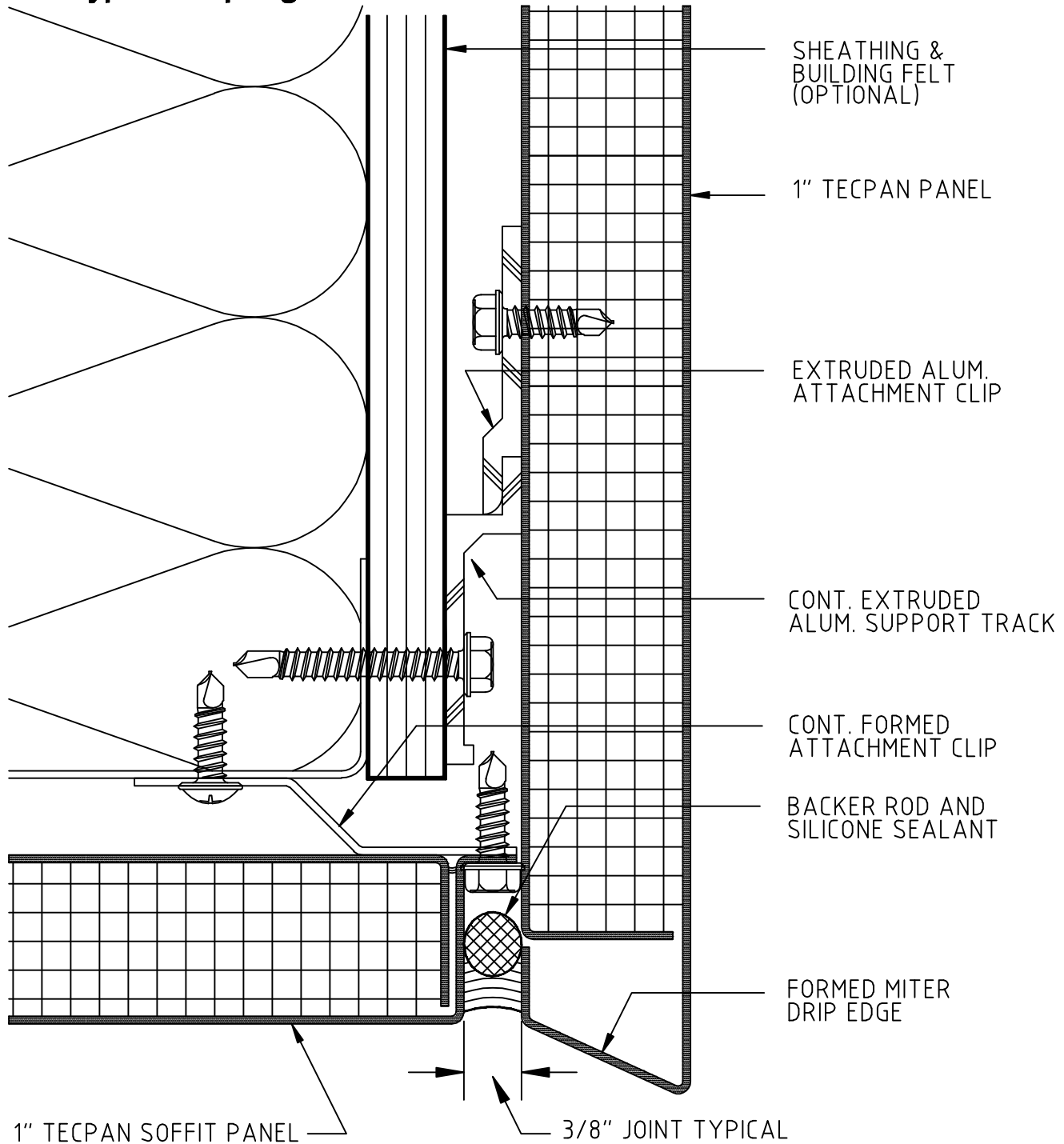
## 4C Typical Sill



**Columbia Architectural Products, Inc.**  
**10722 Tucker Street**  
**Beltsville, MD 20705**  
**Tel: 301-937-4383**  
**Fax: 301-937-6850**

**Tecpan<sup>TM</sup>**  
**Architectural Panel Systems**

## 5A Typical Dripedge at Soffit

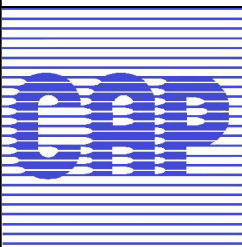
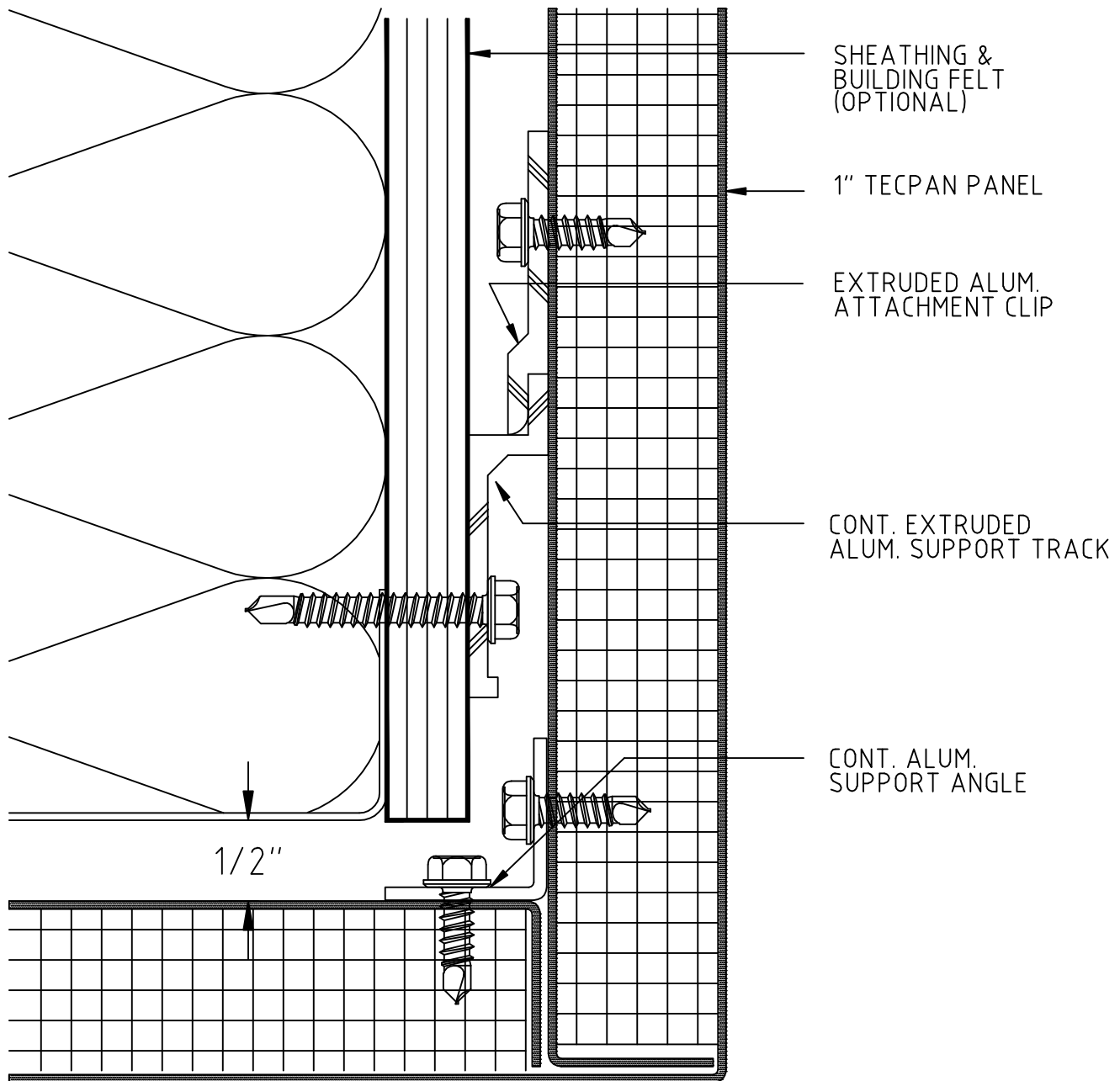


**Columbia Architectural Products, Inc.**  
10722 Tucker Street  
Beltsville, MD 20705  
Tel: 301-937-4383  
Fax: 301-937-6850

**Tecpan<sup>TM</sup>**  
**Architectural Panel Systems**



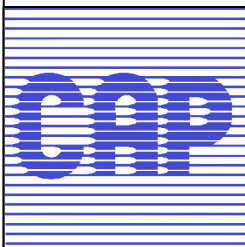
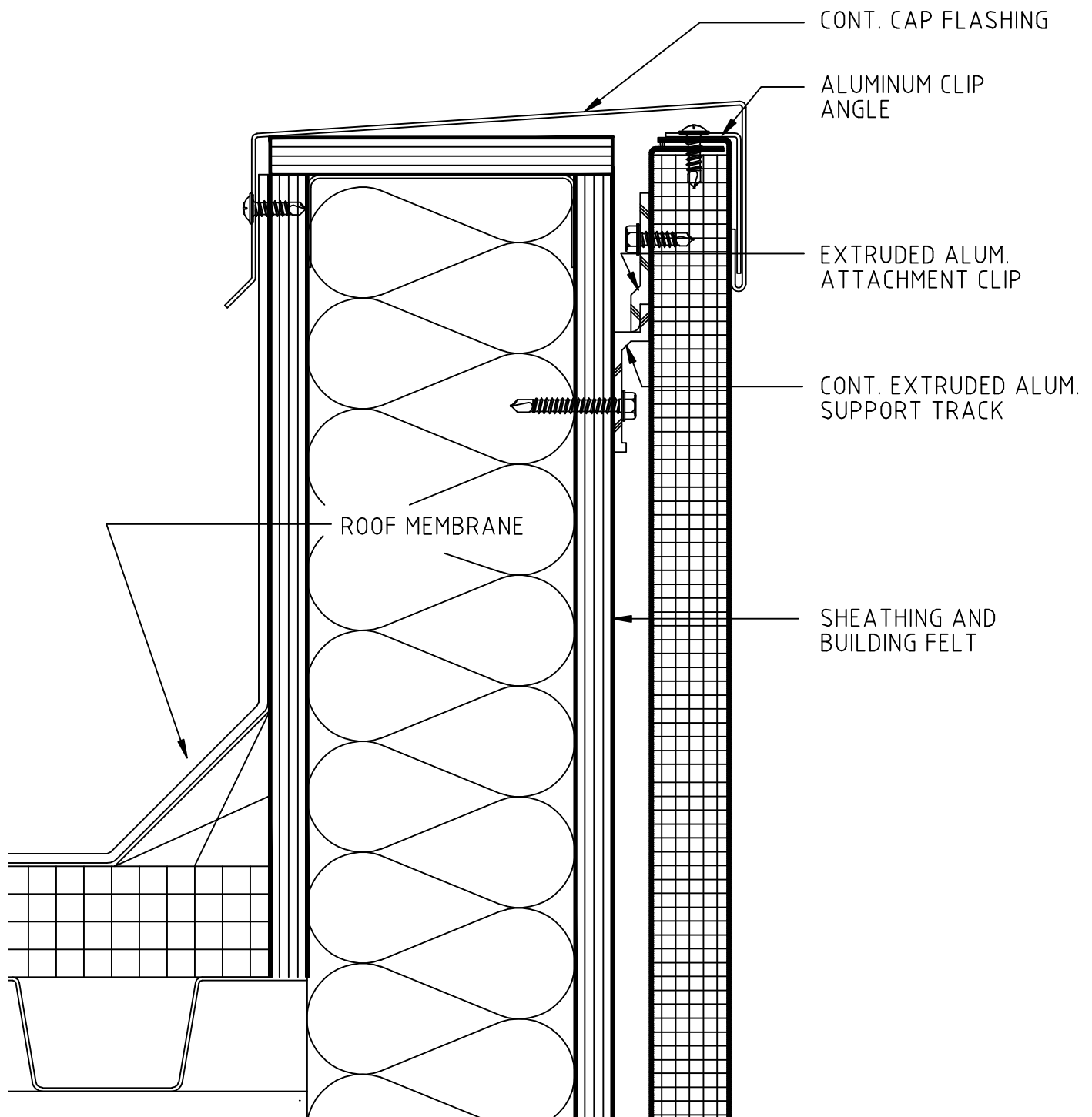
## 5B Typical Soffit Return



Columbia Architectural Products, Inc.  
10722 Tucker Street  
Beltsville, MD 20705  
Tel: 301-937-4383  
Fax: 301-937-6850

**Tecpan**<sup>TM</sup>  
Architectural Panel Systems

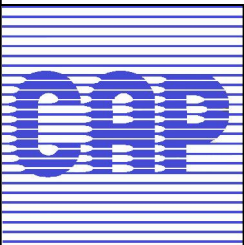
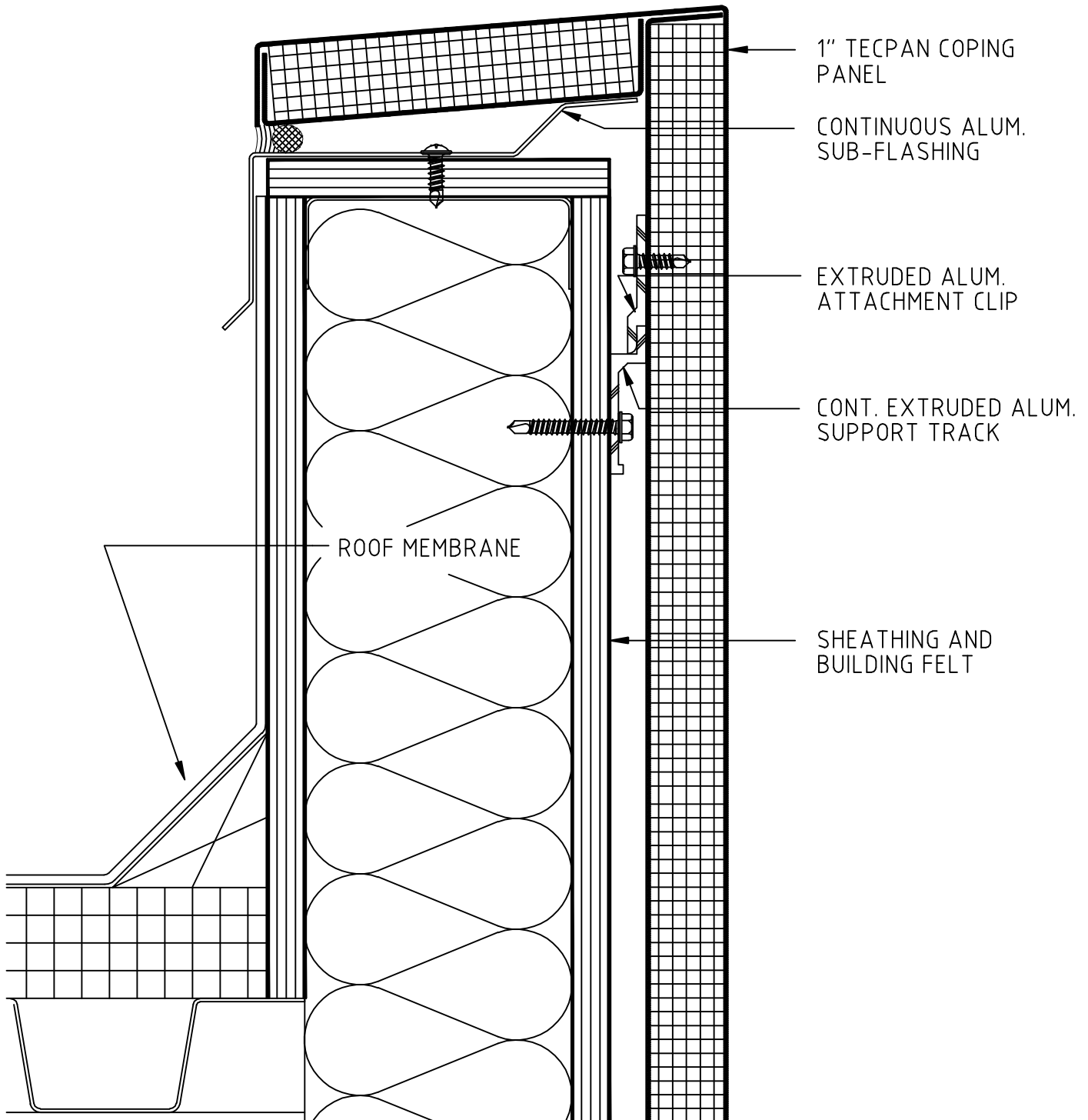
## 6A Typical Coping



**Columbia Architectural Products, Inc.**  
10722 Tucker Street  
Beltsville, MD 20705  
Tel: 301-937-4383  
Fax: 301-937-6850

**Tecpan<sup>TM</sup>**  
**Architectural Panel Systems**

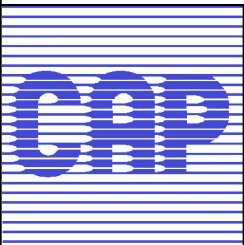
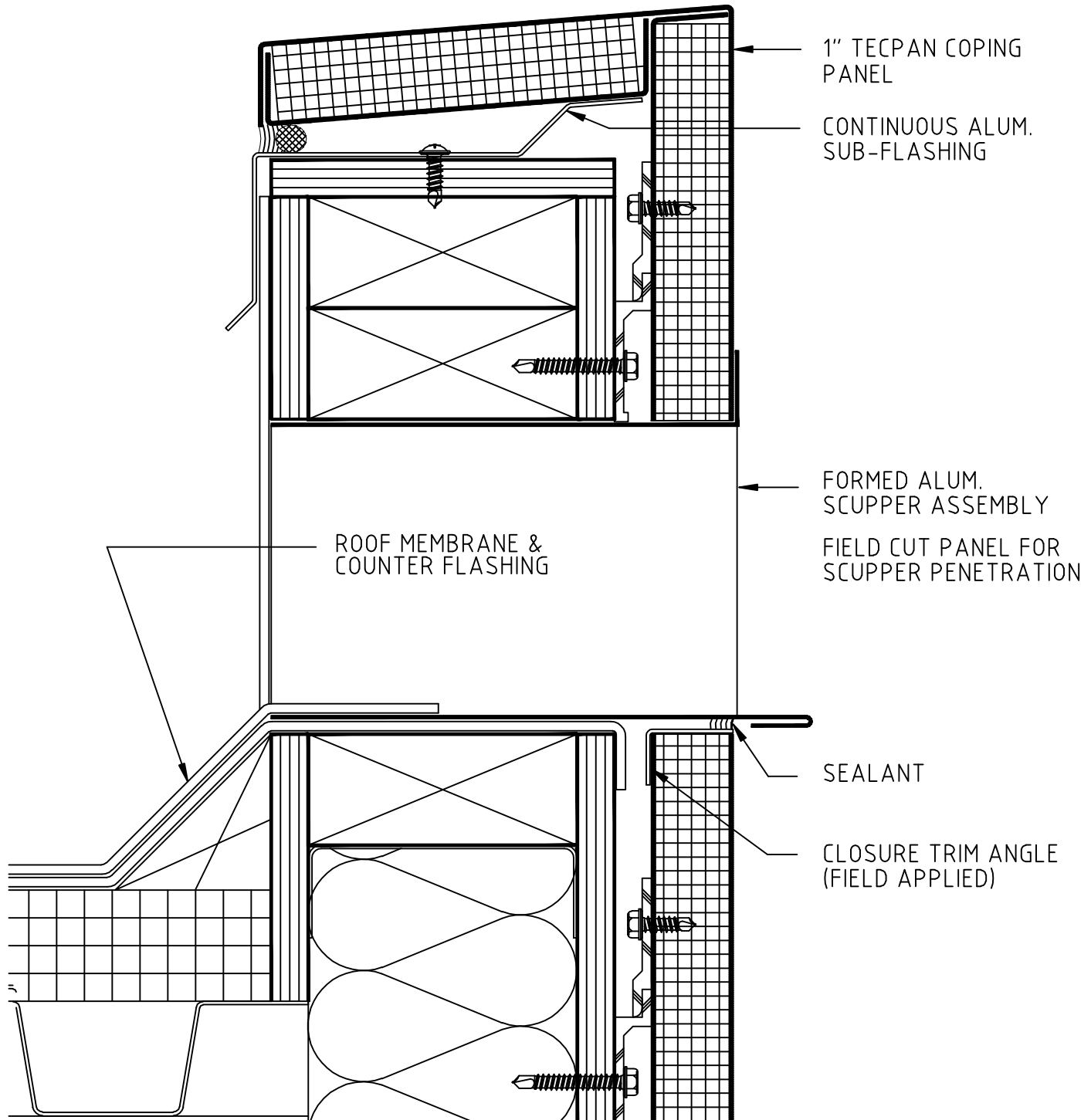
## 6B Typical Coping



**Columbia Architectural Products, Inc.**  
10722 Tucker Street  
Beltsville, MD 20705  
Tel: 301-937-4383  
Fax: 301-937-6850

**Tecpan<sup>TM</sup>**  
**Architectural Panel Systems**

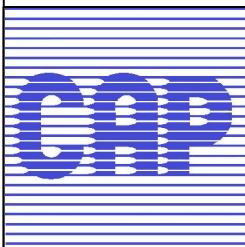
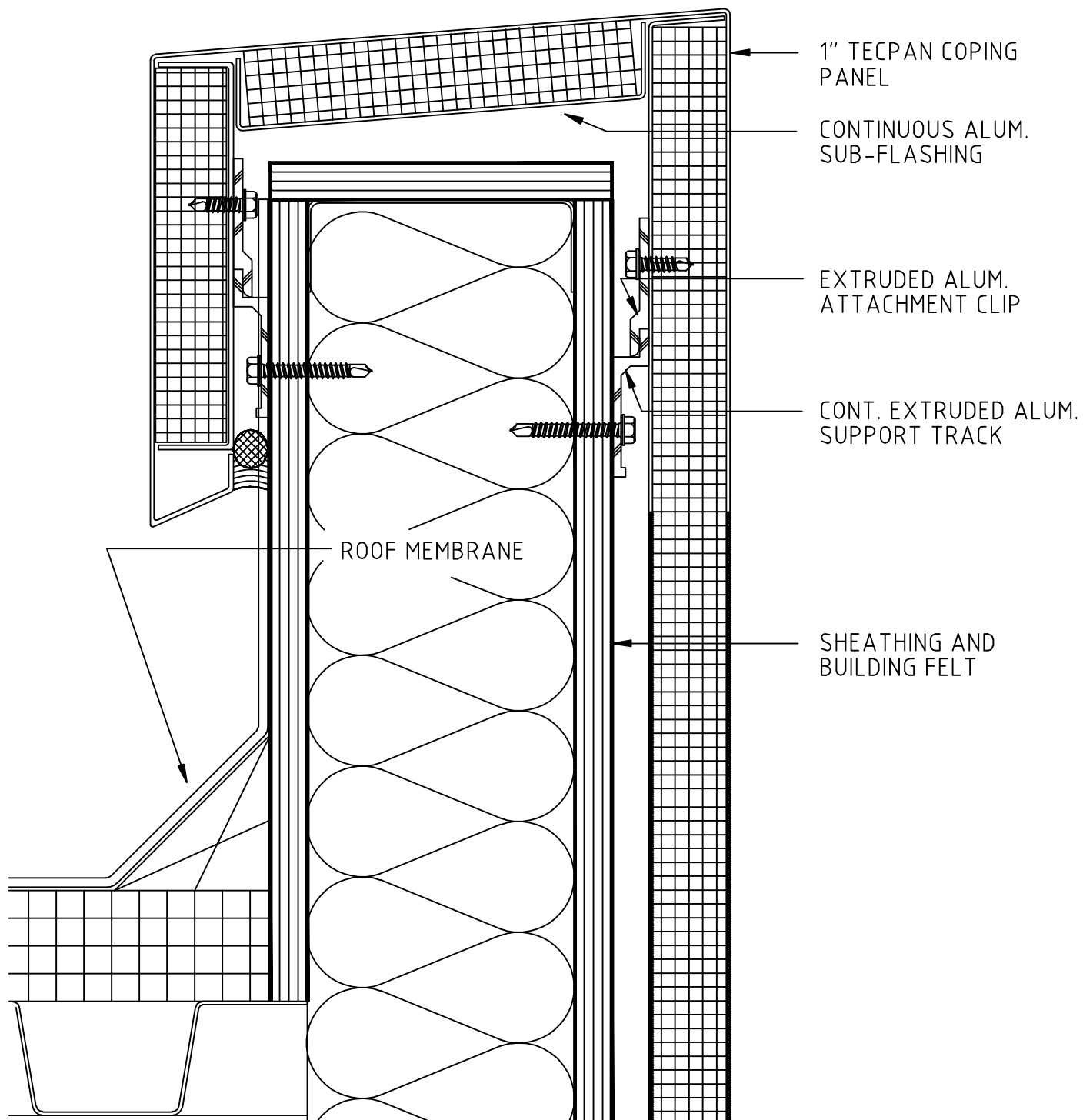
## 6C Typical Parapet Overflow Scupper



**Columbia Architectural Products, Inc.**  
10722 Tucker Street  
Beltsville, MD 20705  
Tel: 301-937-4383  
Fax: 301-937-6850

**Tecpan<sup>TM</sup>**  
**Architectural Panel Systems**

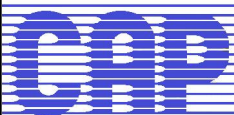
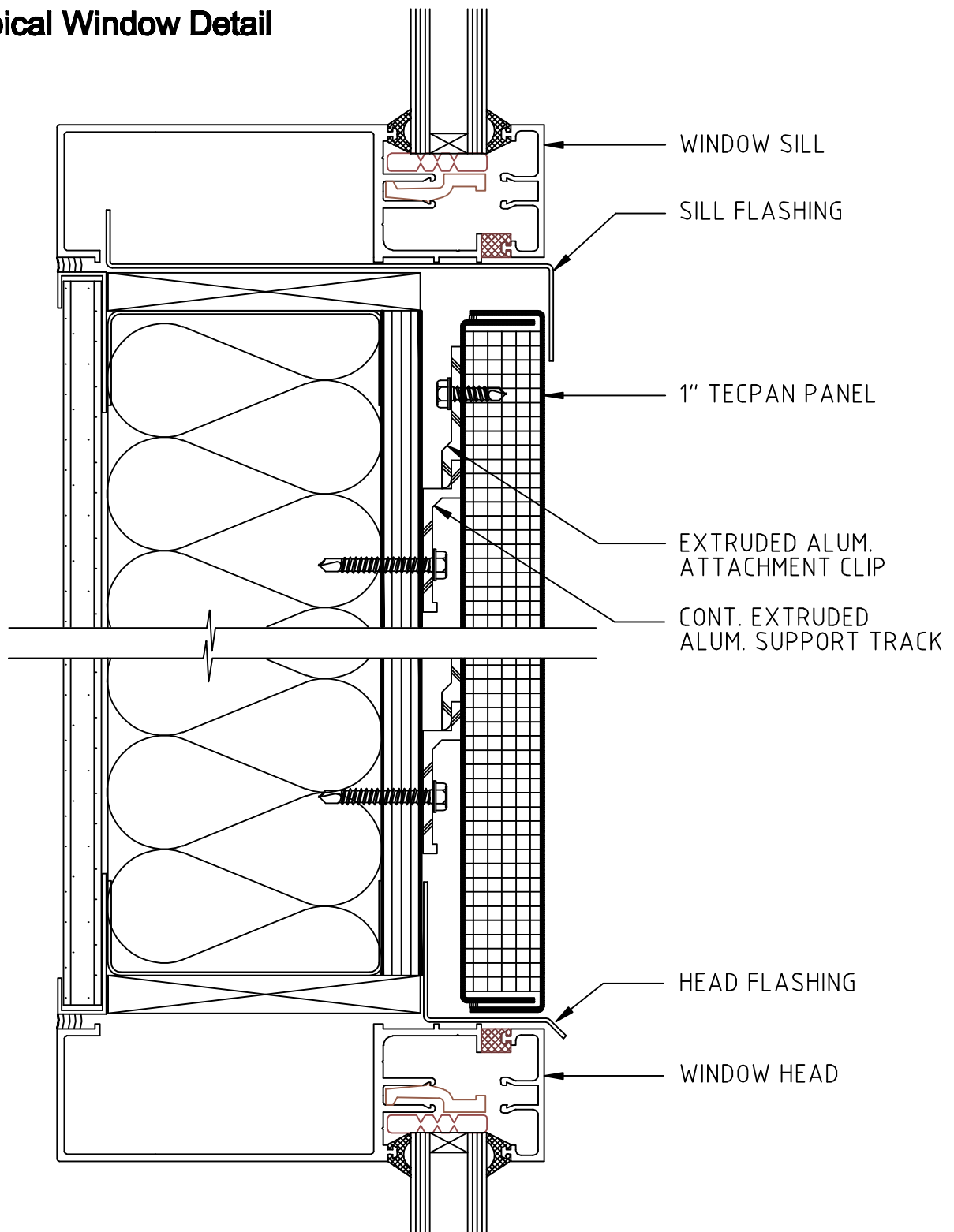
## 6D Typical Coping



**Columbia Architectural Products, Inc.**  
10722 Tucker Street  
Beltsville, MD 20705  
Tel: 301-937-4383  
Fax: 301-937-6850

**Tecpan<sup>TM</sup>**  
**Architectural Panel Systems**

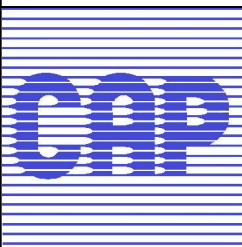
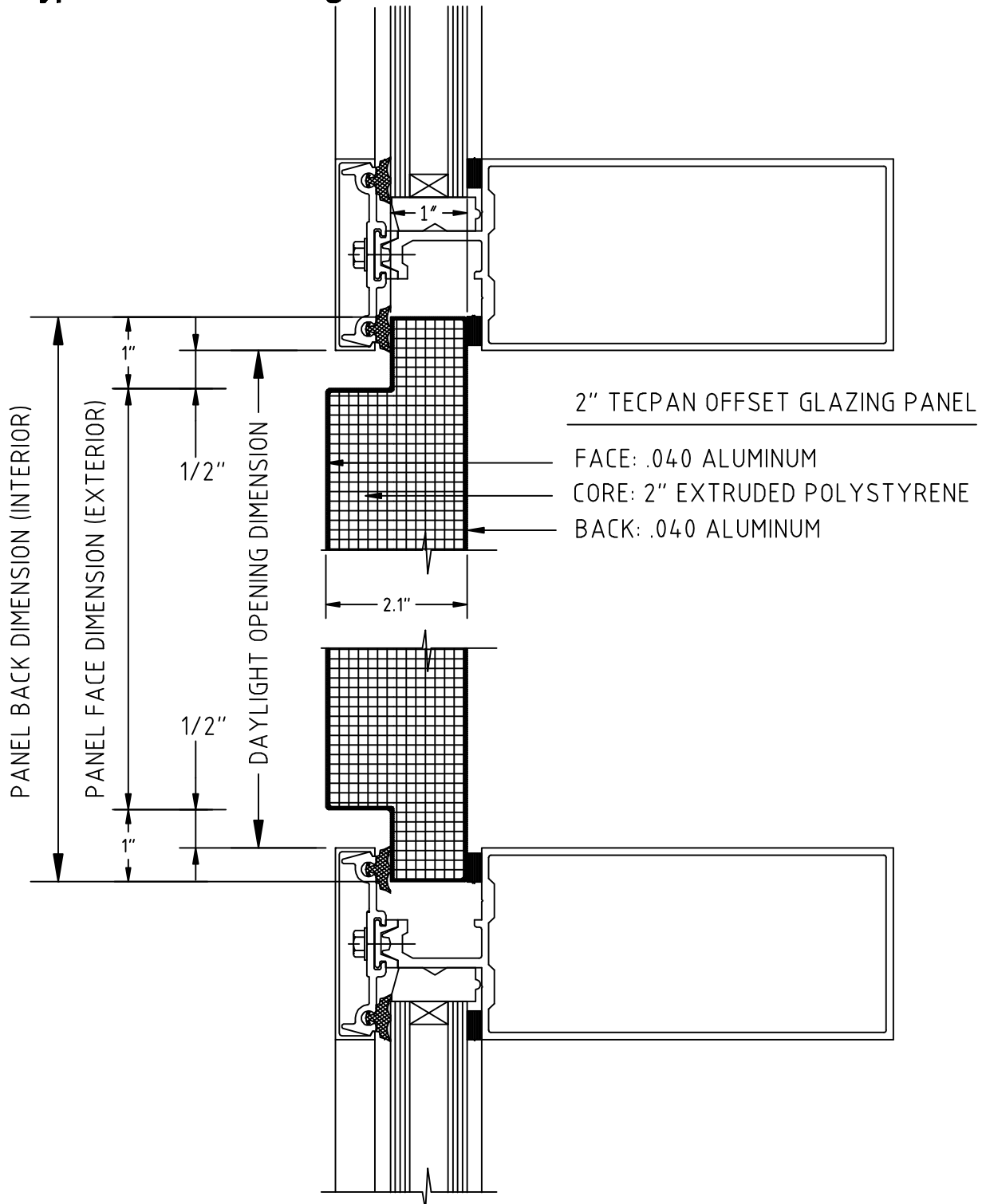
## 7A Typical Window Detail



**Columbia Architectural Products, Inc.**  
10722 Tucker Street  
Beltsville, MD 20705  
Tel: 301-937-4383  
Fax: 301-937-6850

**Tecpan<sup>TM</sup>**  
**Architectural Panel Systems**

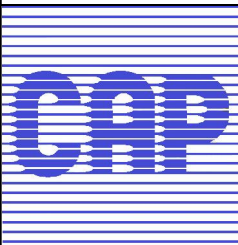
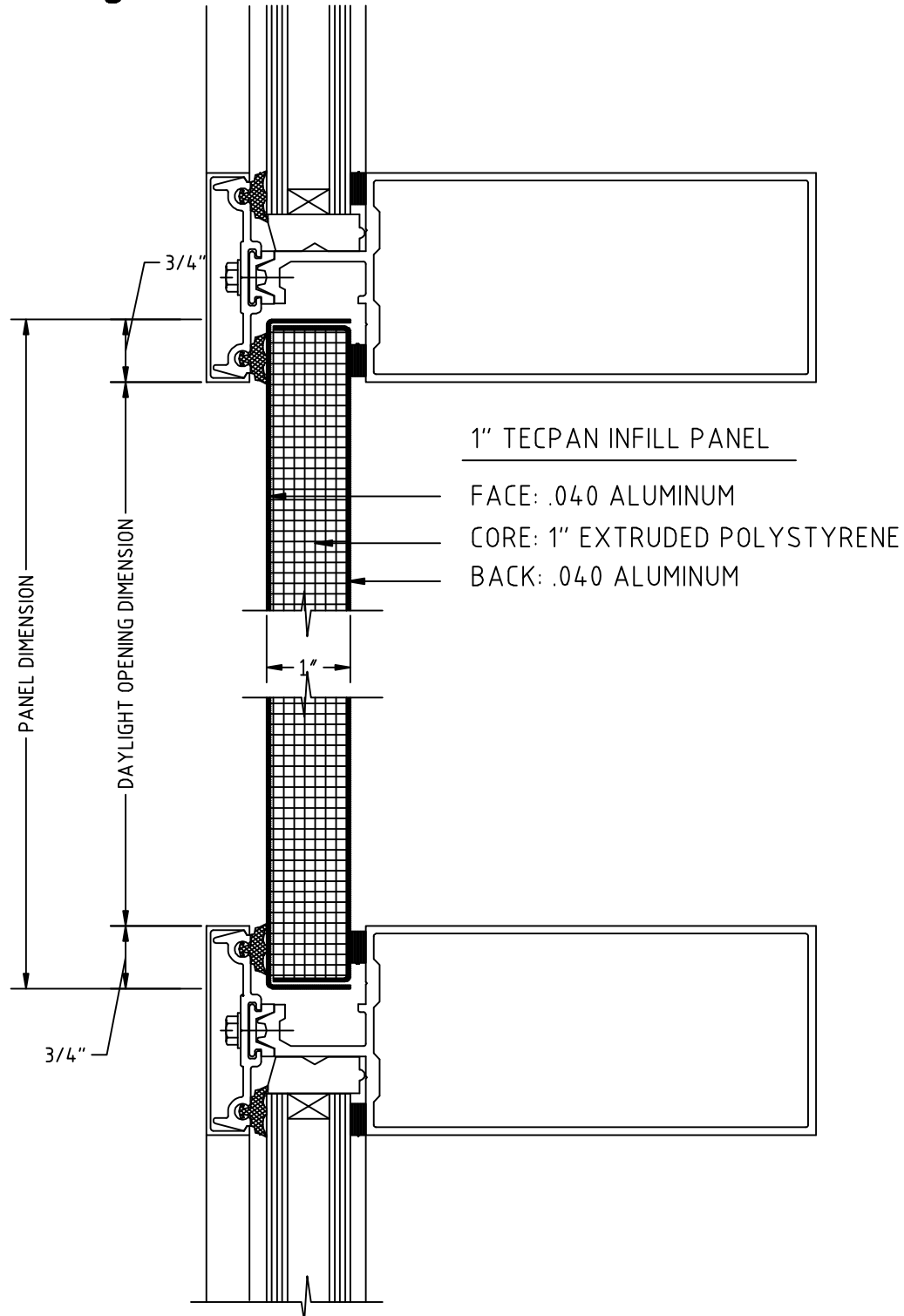
## 7B Typical Offset Glazing



Columbia Architectural Products, Inc.  
10722 Tucker Street  
Beltsville, MD 20705  
Tel: 301-937-4383  
Fax: 301-937-6850

**Tecpan**<sup>TM</sup>  
Architectural Panel Systems

## 7C Typical Glazing

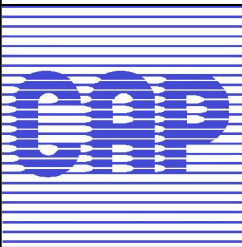
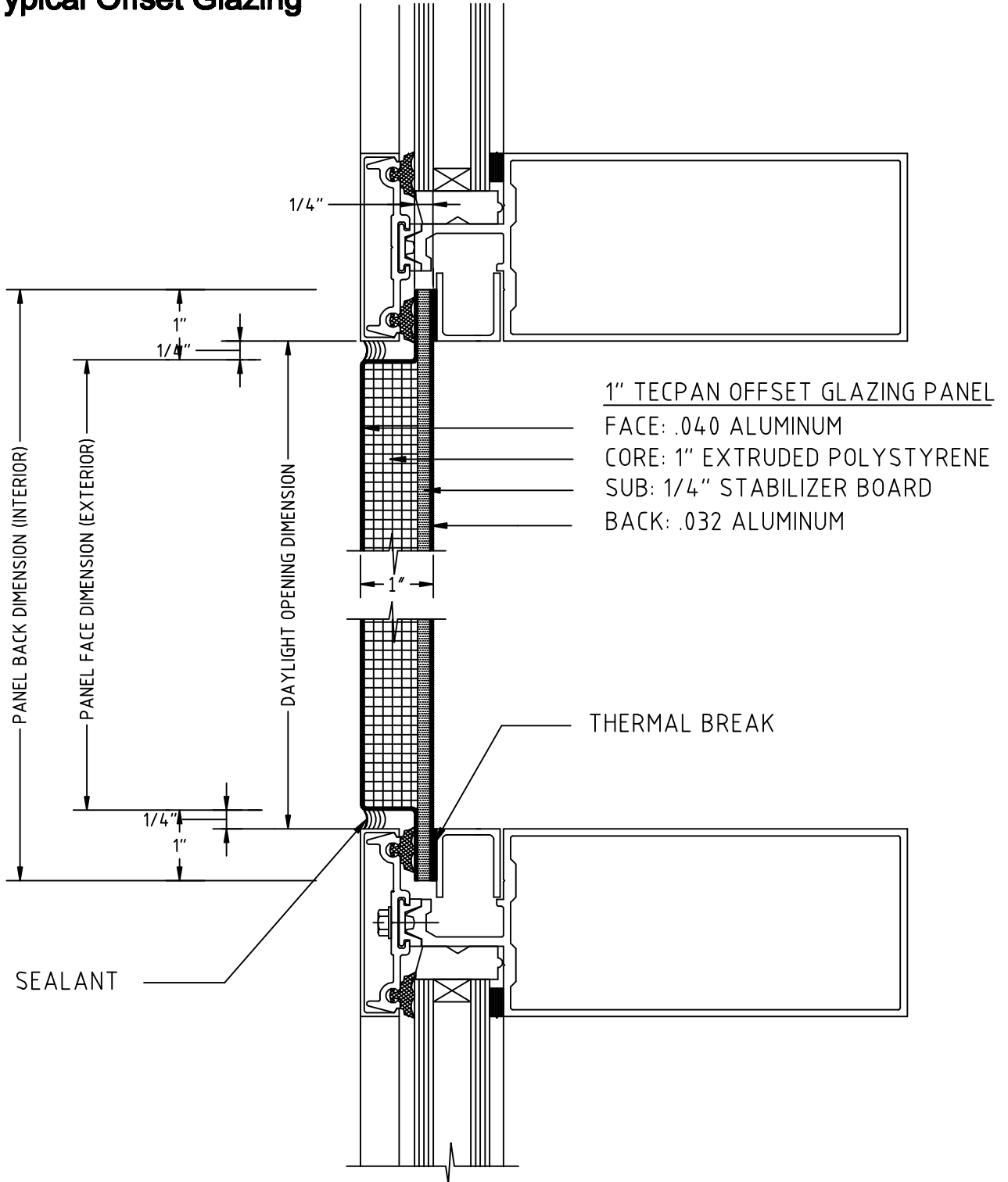


Columbia Architectural Products, Inc.  
10722 Tucker Street  
Beltsville, MD 20705  
Tel: 301-937-4383  
Fax: 301-937-6850

**Tecpan**<sup>TM</sup>  
Architectural Panel Systems



## 7D Typical Offset Glazing

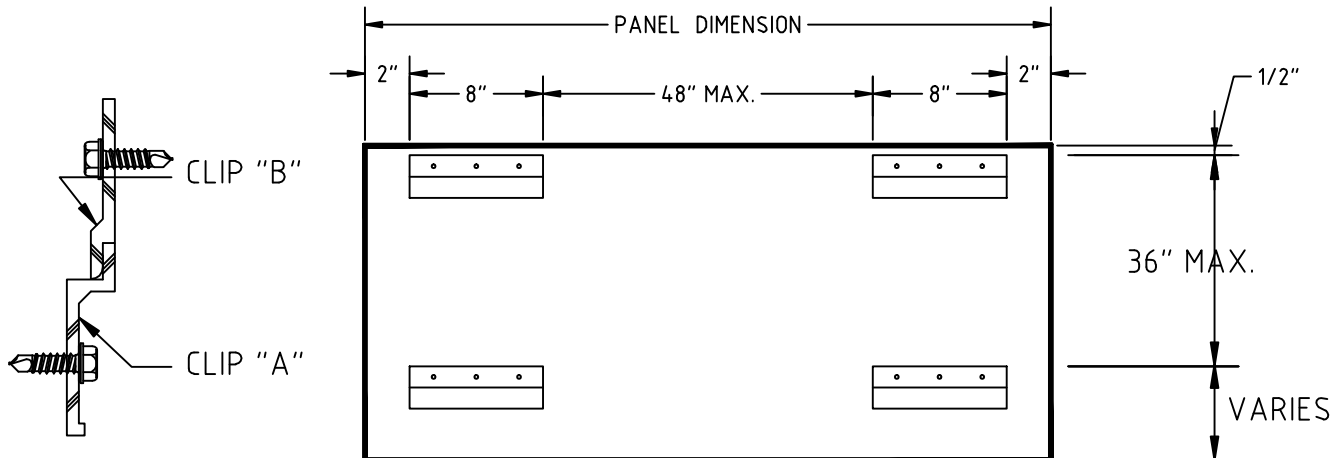


Columbia Architectural Products, Inc.  
10722 Tucker Street  
Beltsville, MD 20705  
Tel: 301-937-4383  
Fax: 301-937-6850

**Tecpan**<sup>TM</sup>  
Architectural Panel Systems

## 8

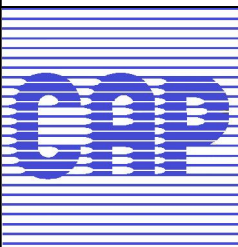
## Attachment Guidelines

CLIP "A"

- EXTRUSION IS FURNISHED IN LENGTHS OF 120", TO BE CUT TO LENGTH OR PREDRILLED (IF REQ'D) BY INSTALLER
- CONTINUOUS HORIZONTAL ATTACHMENT TO FRAMING MEMBERS OR WALL SURFACE.
- FASTEN TO EACH FRAMING MEMBER - 16" TO 24" ON CENTER TYPICALLY
- SPACING SHOULD BE MAXIMUM 48" O.C. VERTICALLY: PANELS WITH PLYWOOD CORE REQUIRE CLOSER CLIP SPACING (36" MAX) TO PREVENT PANEL BOW

CLIP "B"

- EXTRUSION IS FURNISHED IN LENGTHS OF 8" (PRE-PUNCHED) FOR FASTENERS.
- ATTACHED TO BACK OF PANEL IN 8" LENGTHS.
- MINIMUM OF 3 FASTENERS PER CLIP (NO. 12 X 3/4" HWH S/S).
- A MINIMUM OF 4 CLIPS PER PANEL IS REQUIRED. SPACING SHOULD BE MAXIMUM 48" O.C. VERTICALLY AND HORIZONTALLY: VERTICAL SPACING FOR PANELS WITH PLYWOOD CORE TO BE MAXIMUM 36" O.C. AS REQUIRED FOR CLIP "A".
- EXAMPLE: A PANEL WITH FOAM CORE 4' HIGH X 8' WIDE WOULD REQUIRE 2 ROWS OF 3 CLIPS; A PANEL 8' HIGH X 4' WIDE WOULD REQUIRE 3 ROWS OF 2 CLIPS EACH.



**Columbia Architectural Products, Inc.**  
**10722 Tucker Street**  
**Beltsville, MD 20705**  
**Tel: 301-937-4383**  
**Fax: 301-937-6850**

**Tecpan<sup>TM</sup>**  
**Architectural Panel Systems**