

☒ **STEEL**

- 0.188 WALL (3/16") STEEL ON ALL PRODUCTS
- 56% THICKER THAN 0.120 AKA 11 GAUGE

☒ **POWDER COATING**

- HYBRID TEXTURE POWDER COATING FOR INCREASED DURABILITY

☒ **UPHOLSTERY / PADDING**

- DOUBLE STITCHED SEAMS
- 3/4" PLYWOOD
- T-NUT FASTENERS
- 1" SUPER DENSE CLOSED CELL NEOPRENE PADDING

☒ **LINEAL BALL BEARINGS**

- PRECISION GROUND STEEL SEALED 1", 1.25", & 1.5"
- RIDING ON ROCKWALL 60 SHAFTING

☐ **SOLID OAK**

- 3/4" SOLID TONGUE & GROOVE

☐ **STAINLESS STEEL**

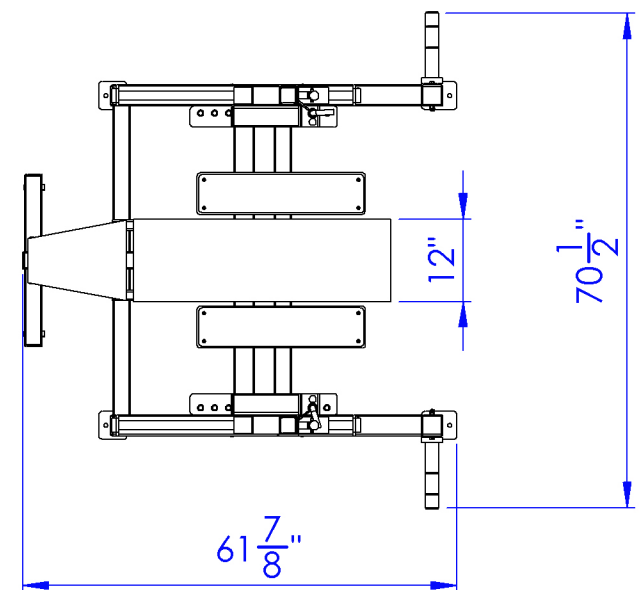
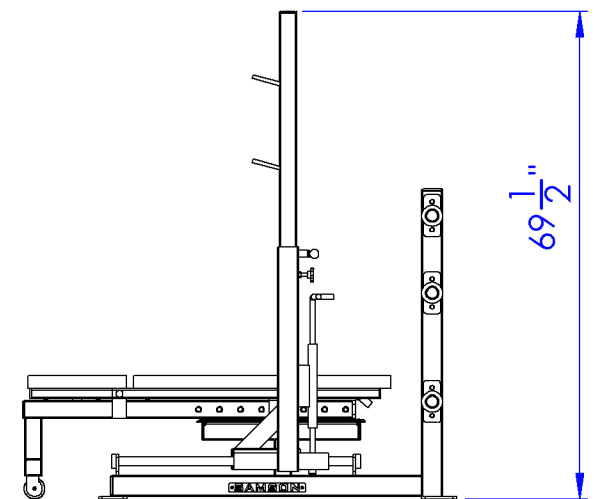
- ON ALL ADJUSTABLE PARTS

☐ **WEIGHT STACKS**

- 1" SOLID ROUND GUIDE ROD
- W/INDUSTRIAL CHROME PLATING
- 100% STEEL SELECTORIZED WEIGHT STACK PLATES

☒ **CUSTOM COLORS AVAILABLE**

☒ **CUSTOM DESIGNS AVAILABLE**



PRODUCT #
102HHIPB

PRODUCT WEIGHT:
544LB

SAMSON EQUIPMENT, INC.
1-800-4-SAMSON
SAMSONEQUIPMENT.COM

OLYMPIC BENCH/INCLINE/SLIDING RACK



SAMSON EQUIPMENT
MADE IN AMERICA