

ADJUSTABLE KNEE AND SEAT
PAD

ADJUSTABLE PULLEY
SYSTEM

☒ **STEEL**

-0.188 WALL (3/16") STEEL ON ALL PRODUCTS
56% THICKER THAN 0.120 AKA 11 GAUGE

☒ **POWDER COATING**

-HYBRID TEXTURE POWDER COATING FOR
INCREASED DURABILITY

☐ **UPHOLSTERY / PADDING**

-DOUBLE STITCHED SEAMS
-3/4" PLYWOOD
-T-NUT FASTENERS

-1" SUPER DENSE CLOSED CELL NEOPRENE PADDING

☐ **STEEL SEALED BALL BEARINGS**

-PRECISION GROUND STEEL SEALED 1", 1.25", & 1.5"
RIDING ON ROCKWALL 60 SHAFTING

☐ **SOLID OAK**

-3/4" SOLID TONGUE & GROOVE

☒ **STAINLESS STEEL**

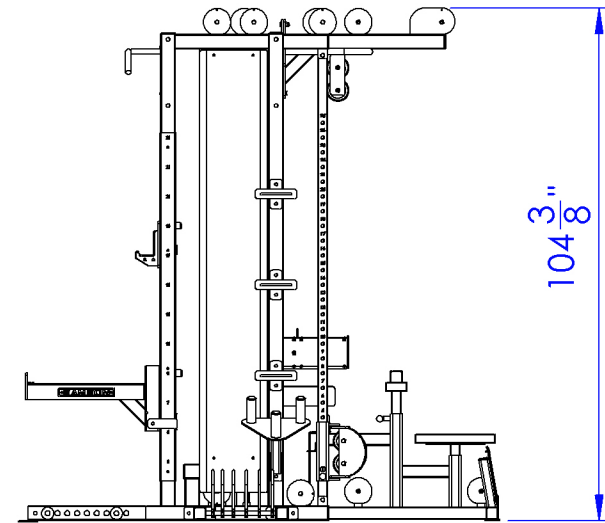
-ON ALL ADJUSTABLE PARTS

☒ **WEIGHT STACKS**

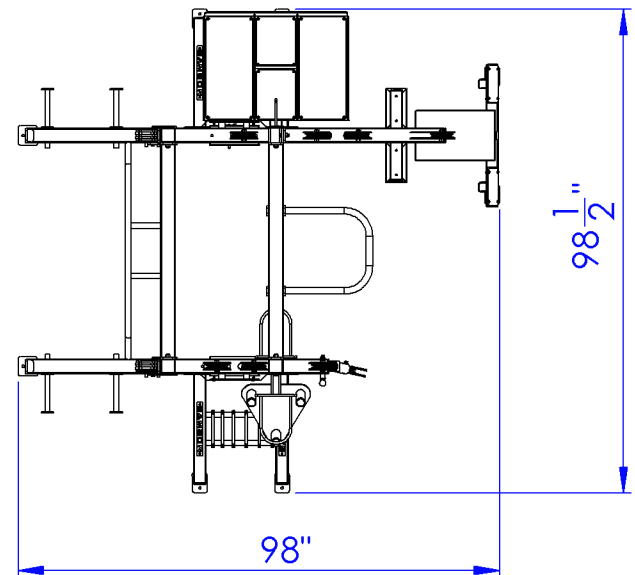
-1" SOLID ROUND GUIDE ROD
W/INDUSTRIAL CHROME PLATING
-100% STEEL SELECTORIZED
WEIGHT STACK PLATES

☒ **CUSTOM COLORS AVAILABLE**

☒ **CUSTOM DESIGNS AVAILABLE**



104 ³/₈"



98 ¹/₂"

98"

PRODUCT #
FTR111MSSL816PB

PRODUCT WEIGHT:
1786LB

SAMSON EQUIPMENT, INC.
1-800-4-SAMSON
SAMSONEQUIPMENT.COM

FUNCTIONAL TRAINING HALF POWER RACK WITH LAT PULLDOWN, ROW COMBO & POWER BLOCKS



SAMSON EQUIPMENT
MADE IN AMERICA