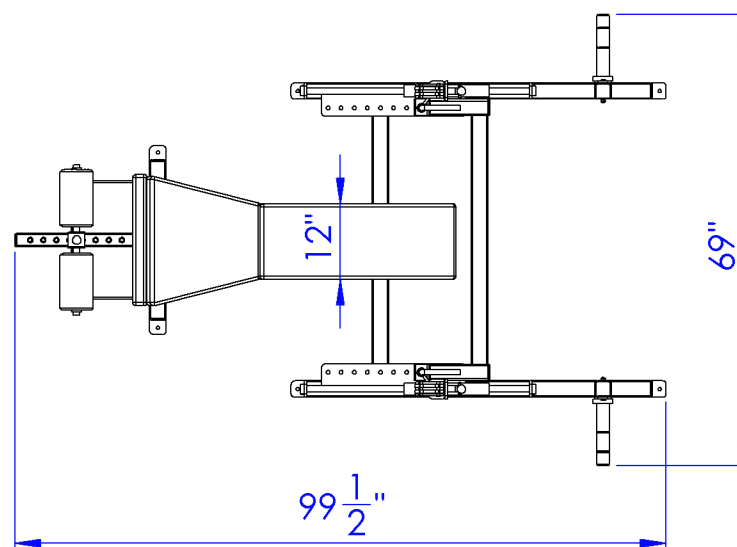
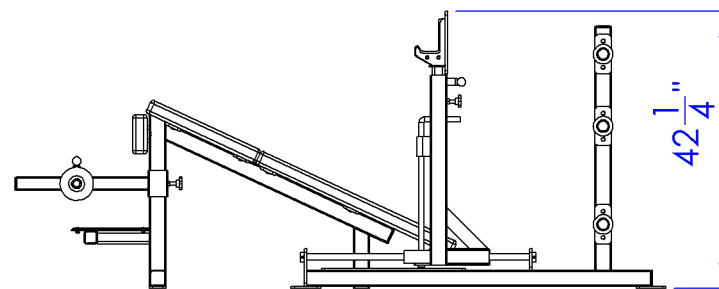


- ☒ **STEEL**
 - 0.188 WALL (3/16") STEEL ON ALL PRODUCTS
 - 56% THICKER THAN 0.120 AKA 11 GAUGE
- ☒ **POWDER COATING**
 - HYBRID TEXTURE POWDER COATING FOR INCREASED DURABILITY
- ☒ **UPHOLSTERY / PADDING**
 - DOUBLE STITCHED SEAMS
 - 3/4" PLYWOOD
 - T-NUT FASTENERS
 - 1" SUPER DENSE CLOSED CELL NEOPRENE PADDING
- ☒ **STEEL SEALED BALL BEARINGS**
 - PRECISION GROUND STEEL SEALED 1", 1.25", & 1.5"
 - RIDING ON ROCKWALL 60 SHAFTING
- ☐ **SOLID OAK**
 - 3/4" SOLID TONGUE & GROOVE
- ☒ **STAINLESS STEEL**
 - ON ALL ADJUSTABLE PARTS
- ☐ **WEIGHT STACKS**
 - 1" SOLID ROUND GUIDE ROD W/INDUSTRIAL CHROME PLATING
 - 100% STEEL SELECTORIZED WEIGHT STACK PLATES
- ☒ **CUSTOM COLORS AVAILABLE**
- ☒ **CUSTOM DESIGNS AVAILABLE**



PRODUCT #
103HS

PRODUCT WEIGHT:
396LB

SAMSON EQUIPMENT, INC.
1-800-4-SAMSON
SAMSONEQUIPMENT.COM

OLYMPIC DECLINE BENCH



SAMSON EQUIPMENT
MADE IN AMERICA