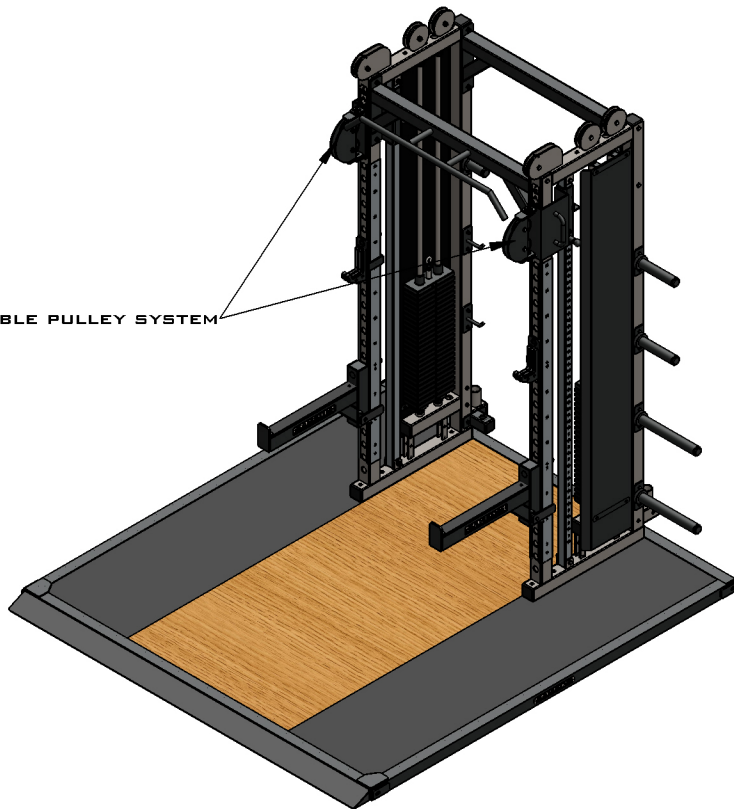


ADJUSTABLE PULLEY SYSTEM



☒ **STEEL**

- 0.188 WALL (3/16") STEEL ON ALL PRODUCTS
- 56% THICKER THAN 0.120 AKA 11 GAUGE

☒ **POWDER COATING**

- HYBRID TEXTURE POWDER COATING FOR INCREASED DURABILITY

☐ **UPHOLSTERY / PADDING**

- DOUBLE STITCHED SEAMS
- 3/4" PLYWOOD
- T-NUT FASTENERS
- 1" SUPER DENSE CLOSED CELL NEOPRENE PADDING

☐ **STEEL SEALED BALL BEARINGS**

- PRECISION GROUND STEEL SEALED 1", 1.25", & 1.5" RIDING ON ROCKWALL 60 SHAFTING

☒ **SOLID OAK**

- 3/4" SOLID TONGUE & GROOVE

☒ **STAINLESS STEEL**

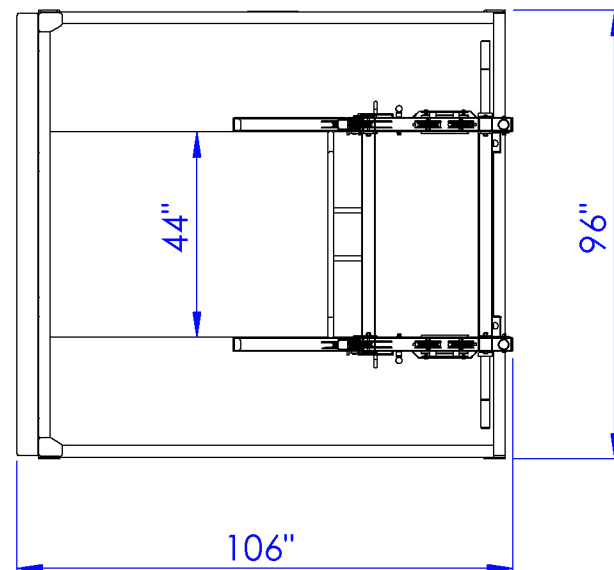
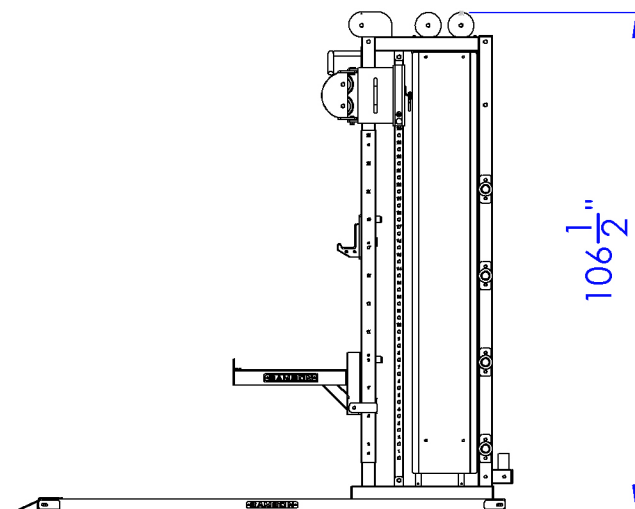
- ON ALL ADJUSTABLE PARTS

☒ **WEIGHT STACKS**

- 1" SOLID ROUND GUIDE ROD W/INDUSTRIAL CHROME PLATING
- 100% STEEL SELECTORIZED WEIGHT STACK PLATES

☒ **CUSTOM COLORS AVAILABLE**

☒ **CUSTOM DESIGNS AVAILABLE**



PRODUCT #
FTRPSHH

PRODUCT WEIGHT:
2118LB

SAMSON EQUIPMENT, INC.
1-800-4-SAMSON
SAMSONEQUIPMENT.COM

FUNCTIONAL TRAINING HALF RACK WITH PLATFORM



SAMSON EQUIPMENT
MADE IN AMERICA