



# 2019 Annual Report



April 8, 2020

Dear Friends of The House,

The Greeley Family House is pleased to provide the 2019 Annual Report, which marks the 35<sup>th</sup> year that The House has served Weld County. Everyone involved in helping families who face acute homelessness in Weld County knows that The House has a big mission and the numbers in 2019 underscore the need. Last year The House provided 16,870 individual nights of shelter to 72 families – families who are comprised of 93 adults and 142 children. The number of families needing shelter reflects the ongoing shortage of affordable housing in the community. The House was full nearly every day the entire year...and at many times there was a wait list.

But we not only continued the mission we started 35 years ago, we also made changes to help prepare for The House for the future: we are using a new name, we hired a new executive director and we have a new way of thinking about our families. With the hiring of our new executive director, the board embarked on a new strategic plan, one that is touching every part of The House. By replacing our name “Greeley Transitional House” with “Greeley Family House” as a dba, we better express who we serve and at the same time remind everyone that we provide “home” for the families we serve. Our new executive director is getting the message out to our community, to our donors and to others, a message that reminds everyone that The House provides much more than 60 days of shelter to families in need. We go further to assist families and help them move from homelessness to self-sufficiency in the shortest timeframe possible.

In 2019, forty-two of our families (58%) found permanent housing, and 52 families (72%) were employed when they left The House. We provided our families with over 975 hours of case management and 320 referrals to more than 30 community partner agencies and programs. We are proud to report that 72 families we served with post-shelter housing programs were housing stable at the end of their program participation. But the need continues and we’re certain that demand in 2020 will only rise.

As the shortage of affordable housing in Weld County continues to be an issue, The Greeley Family House is a critical resource for families needing temporary housing. We want to thank each individual and every corporate donor that contributed to The House, enabling us to provide services and programs that empower families with short and long-term housing stability. Please read on to learn more about the two programs The House provides to families in need. Feel free to contact us with any questions you may have, or to make a contribution to our families.

Sincerely,

A handwritten signature in black ink that reads "Bianca Fisher". The signature is written in a cursive, flowing style.

Bianca Fisher  
2019 Board President

## **2019 BOARD OF DIRECTORS**

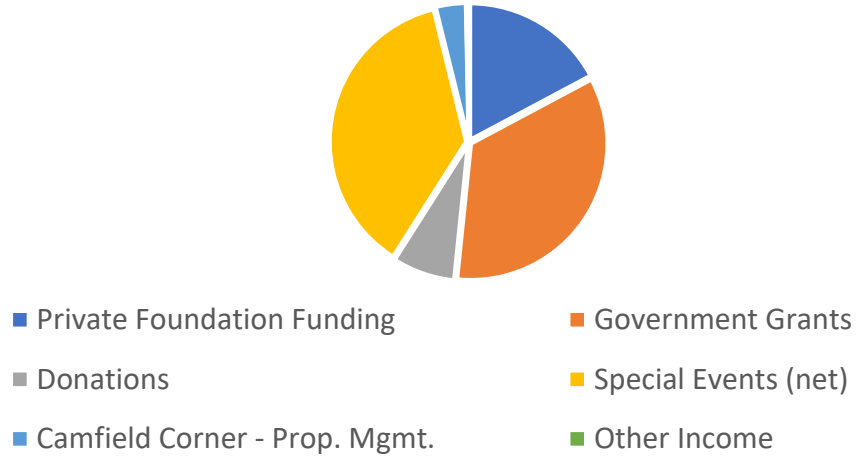
Bianca Fisher	President
Scott Bicknell	Vice President
Morgan Wallace	Secretary
Chris Moser, Treasurer	Treasurer
Polly Kurtz	Past President
Rev. Ben Konecny	
Tim Blandford	
Randy Moser	
Leslie Trujillo	
Lesli Bicknell	
Dawn Lang	
Zach Bond	
Kate Silvas	
Travis Gillmore	Ex-Officio

## **AGENCY PERSONNEL**

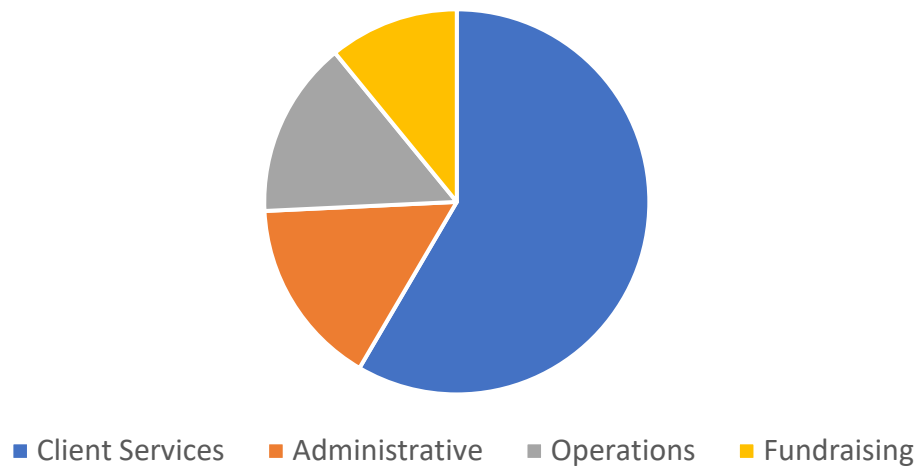
Nancy Wiehagen	Executive Director
Teddy Sanchez	Office Manager
Maria Hernandez	Emergency Shelter Case Manager
Asya Kindle	Housing Stabilization Case Manager
Robert Aldridge	House Manager
Felix Hernandez	House Manager
Emma Lee Muniz	House Manger
Rhonda White	House Manager
Wilbur White	House Manager

## 2019 FINANCIALS

Operating Revenues



Operating Expenses

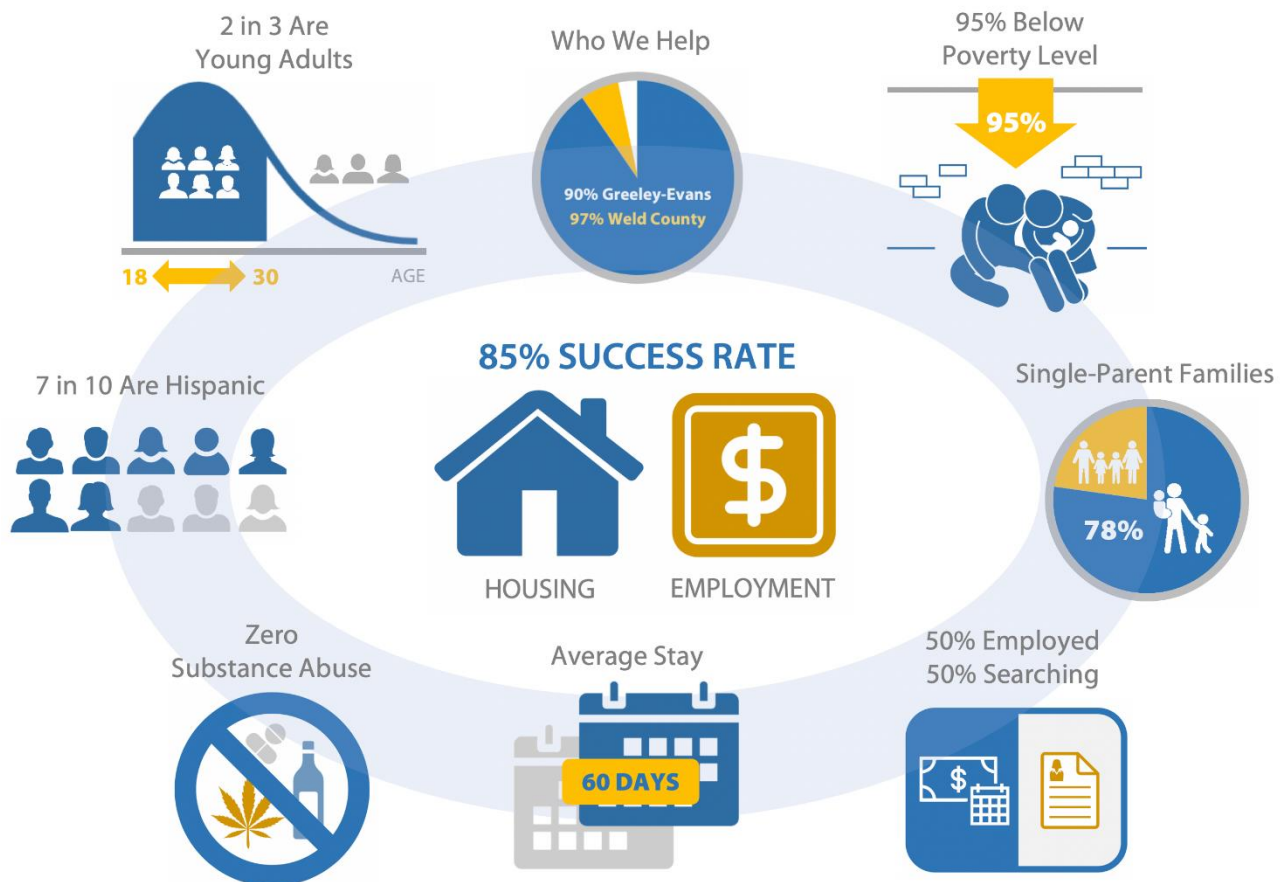


# EMERGENCY SHELTER CASE MANAGEMENT PROGRAM

The House has an application-based 60-day program that provides families with weekly Emergency Shelter Case Management. Case management helps families develop self-sufficiency plans, which includes setting goals for improving their situation. Goals include finding permanent affordable housing and, if unemployed, finding employment. Families are eligible to stay at the House for up to 60 days as long as they are making progress on these goals.

The House operates under HUD's "Housing First" model, a homeless assistance approach that prioritizes providing permanent housing to people experiencing homelessness and serving as a platform from which the families can pursue personal goals and improve their quality of life. The Housing First approach views housing as the foundation for life improvement and enables access to permanent housing without prerequisites or conditions beyond those of a typical renter. Supportive services are offered to support people with housing stability and individual well-being, but participation is not required as services have been found to be more effective when a person chooses to engage.

Families receive weekly, bi-weekly or monthly visits from the House Stabilization Case Manager who provides on-going support and encouragement, assessment of needs, frequent review of goal-setting, referrals, advocacy, and in some cases, direct financial assistance of supplemental rent and security deposits. This infographic shows who The House serves.



## **MAJOR CORPORATE & FOUNDATION CONTRIBUTORS – 2019**

**We are proud of and grateful for the support of our donors,  
please join us in thanking them for their support**

Andersen's Sales & Salvage  
AV Hunter Trust  
Axis Management  
Banner Health  
Burris Optics  
Daniels Fund  
Ehrlich Toyota  
EnviroTech Services, Inc.  
Flood & Peterson  
Flood & Peterson  
George Derring Family Foundation  
Great Western Oil & Gas  
Greeley Subaru  
Hensel Phelps  
Kenny's  
Lat 40, Inc.  
Martillaro Raub & Associates  
Monfort Family Foundation  
Myra Monfort Foundation  
NCCM Inc. (w/ Banner Health)  
Noble Energy  
PDC Energy  
Phelps-Tointon, Inc.  
Richmark Companies  
University of Colorado Health

**ABOUT THE HOUSE**

The Greeley Transitional House was established in 1985 to address the acute lack of services for Weld County families who are homeless. Through the collaboration of the Greeley Interfaith Association, the United Way of Weld County and local human service agencies the House was formed to provide programs and facilities in the community and to accommodate the unique needs of homeless families with shelter and supportive services. The organization has full and part-time staff with oversight from an independent board. Funding is provided through federal and state programs, private foundations, the United Way of Weld County, the City of Greeley, Weld County, businesses, churches and the generous contributions of individual donors.

The Greeley Transitional House, operating as the Greeley Family House since 2019, is the only homeless shelter in Greeley focusing exclusively on the unique needs of homeless families by providing temporary residential emergency and housing stabilization programs. Located in a condo-style facility near downtown Greeley, The House supports up to 12 families with private bedrooms/baths and shared kitchens and living rooms. Whatever the reasons behind a family's homelessness, the Greeley Family House provides a positive, hopeful, and supportive environment in which families in crisis can live temporarily while re-establishing their independence and moving forward with their lives.



Greeley Family House  
1206 10<sup>th</sup> Street, Greeley, CO 80631  
Telephone: (970) 352-3215  
E-mail: [info@greeleytransitionalhouse.org](mailto:info@greeleytransitionalhouse.org)  
[www.greeleytransitionalhouse.org](http://www.greeleytransitionalhouse.org)