



2023 Annual Report





MISSION

To provide temporary housing and support services
for families experiencing housing instability

VISION

To empower all families in Northern Colorado to achieve long-
term housing stability



To empower all families in Northern Colorado to achieve long-term housing

Dear Friends of The House,

The Greeley Family House is pleased to provide the 2023 Annual Report, which marks the 38th year that The House has served Weld County. Everyone involved in helping families who face acute homelessness in Weld County knows that The House has a big mission and the numbers in 2023 underscore the need.

In 2022, the Greeley Family House provided 10,723 individual nights of shelter to 60 families made up of 72 adults and 119 children. The number of families supported reflects the increase in need for emergency shelter and housing assistance. The average length of stay was 87 days, as housing availability continues to make it harder to find affordable housing for families with lower income levels.

GFH continues to review and adjust processes, procedures, and protocols to better assist families. The families we are encountering are more vulnerable, needing more services for longer periods of time beyond immediate emergency shelter. In 2023 we assisted 46 families (77%) in securing affordable housing (remaining families returned to living with family members, left the state or self-resolved). 50 of adults participating in GFH programming (69%) were employed when they left The House. We supported our families with over 1,890 hours of case management and 200 referrals to more than 30 community partner agencies and programs.

The second part of our program is moving families into permanent housing. We are proud to report that 72 families were housing stable at the end of their program participation. Our support was needed longer as families seem to struggle more to find solid employment. Hourly rates may be higher, but hours of employment are not always 40 hours/week.

The need continues to be greater than the resources available. The shortage of affordable housing in Weld County and inconsistent employment opportunities continue to be an issue. The Greeley Family House is a critical resource for families needing temporary housing. We want to thank each individual and every corporate donor that contributed to The House, enabling us to provide services and programs that empower families with short and long-term housing stability. Please read on to learn more about the two programs. Feel free to contact us with any questions you may have, or to contribute to our families.

Sincerely,

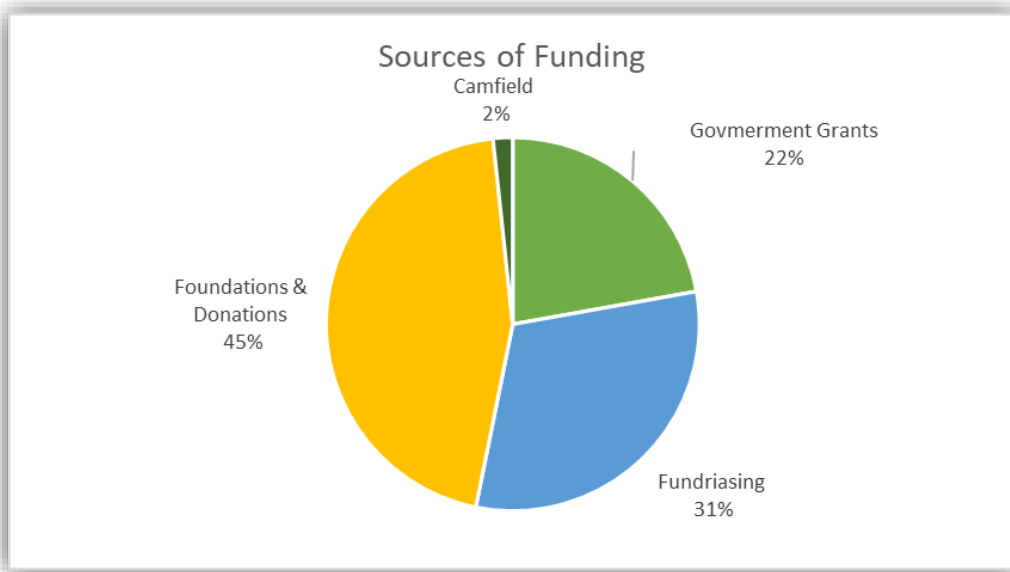
Kristi Thomas
2023 Board President

2023 BOARD OF DIRECTORS

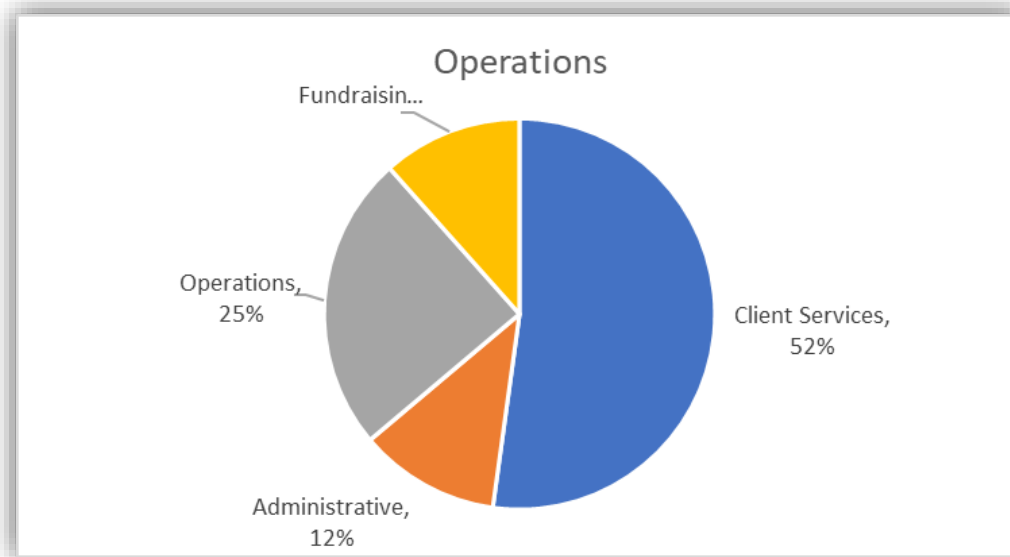
Kristi Thomas	President
Merissa Hice	Vice President/Secretary
Zach Bond, Treasurer	Treasurer
Kate Silvas	Past President
Dawn Lang	
Samantha Franzen	
Jeremy Ehardt	
Ryan Lang	
Leonel "Leo" Carmona	
Jericho Hurley	
Irene Davila	
Travis Gillmore	Ex-Officio

AGENCY PERSONNEL

Nancy Wiehagen	Executive Director
Marcia Diamond	Administrative Assistant
Teddy Sanchez	HMIS/Case Manager Support
Deland Soto	Housing Case Manager
Megan Rhodes	Housing Case Manager
Carol Yazzie	House Manager
Luke Brigham	Facility Maintenance Manager
Robert Aldridge	Snow Removal/Lawn Care



Private Foundation & Donations	\$ 274,312
Government Grants	\$ 134,860
Special Events	\$ 188,398
Camfield Corner - Prop. Mgmt	\$ <u>10,282</u>
Total Revenue	\$ 607,852



Client Services	\$ 317,240
Administrative	\$ 70,955
Operations	\$ 149,253
Fundraising	\$ <u>70,404</u>
Total Expenses	\$ 607,895

MAJOR CORPORATE & FOUNDATION CONTRIBUTORS – 2023

**We are proud of and grateful for the support of our donors,
please join us in thanking them for their support**

4B Holdings

Ace Hardware of Greeley

AIMS Community College

Allo Fiber

Anschutz Family Foundation

Apartments @ Maddie

AV Hunter Trust

Bicknell Insurance

Dutch Bros

EnviroTech Services, Inc.

Flood & Peterson

Travis & Jennifer Gillmore

Hensel Phelps

Kenneth & Myra Monfort Foundation

Martillaro Raub & Associates

McDonald Toyota Greeley

Monfort Family Foundation

Osprey Tree Family Foundation

PDC Energy

Phelps-Tointon, Inc.

Pioneer Press

Royal & Angela Lovell

SoRelle Family Foundation

Timmerman Cattle Company

Trujillo Holdings Inc

The Weld Trust

UFP Industries Foundation

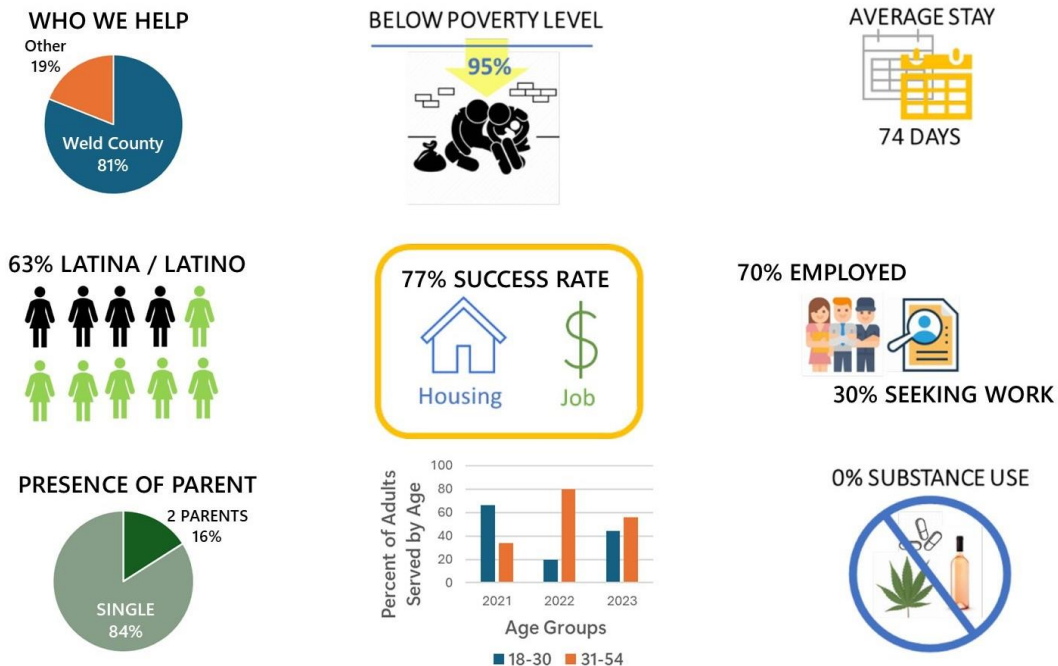
EMERGENCY SHELTER CASE MANAGEMENT PROGRAM

The Greeley Family House provides an assessment-based 60-day program that supports families with weekly Emergency Shelter Case Management sessions. Case management helps families develop self-sufficiency plans, which includes setting goals for improving their situation. The primary goal of the program itself is finding the family permanent affordable housing. Families are eligible to stay at the House for up to 60 days if they are making progress on these goals.

HOUSING CASE MANAGEMENT PROGRAM

The House operates under HUD's "Housing First" model, a homeless assistance approach that prioritizes providing permanent housing to people experiencing homelessness and serving as a platform from which the families can pursue personal goals and improve their quality of life. The Housing First approach views housing as the foundation for life improvement and enables access to permanent housing without prerequisites or conditions beyond those of a typical renter. Supportive services are offered to support people with housing stability and individual well-being, but participation is not required as services have been found to be more effective when a person chooses to engage.

Families receive weekly, bi-weekly, or monthly visits from a GFH Housing Case Manager who provides on-going support and encouragement, assessment of needs, frequent review of goal setting, referrals, advocacy, and in some cases, direct financial assistance of supplemental rent and security deposits. This infographic visualized more information about the families supported by Greeley Family House programs.



ABOUT THE HOUSE

The Greeley Transitional House was established in 1985 to address the acute lack of services for Weld County families who were experiencing homeless. Through the collaboration of the Greeley Interfaith Association, the United Way of Weld County, and local human service agencies the House was formed to provide programs and facilities in the community with the goal of accommodating the unique needs of families experiencing homelessness with shelter and supportive services. The organization has full and part-time staff with oversight from an independent board. Funding is provided through federal and state programs, private foundations, the United Way of Weld County, the City of Greeley, Weld County, businesses, churches, and the generous contributions of individual donors.

The Greeley Family House continues to be the only homeless shelter in Greeley providing temporary residential emergency and housing stabilization programs to families with children. Located in a townhome style facility near downtown Greeley, the House supports up to 12 families with private bedrooms/baths and shared kitchens and living rooms. Whatever the reasons behind a family's experience with homelessness, the Greeley Family House provides a positive, hopeful, and supportive environment in which families in crisis can live temporarily while re-establishing their independence and moving forward with their lives.



Greeley Family House
1206 10th Street, Greeley, CO 80631
Telephone: (970) 352-3215
E-mail: info@greeleyfamilyhouse.org
www.greeleyfamilyhouse.org