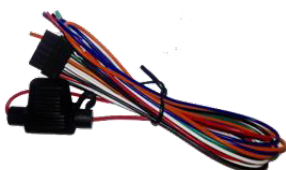
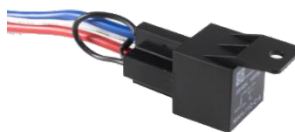




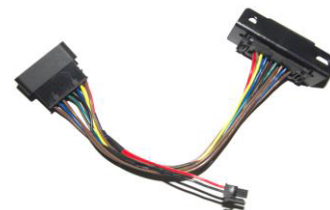
SP3801



*Power Harness



Relay (Optional)



*OBD II Adapter (Optional)

SP3801 INSTALLATION STEPS

When mounting the SP3801, find a suitable mounting location under the vehicle dash pad. Be sure the label is facing up to ensure a better GPS fix. Measure the voltage at the vehicle battery with the car off. Power to the SP3801 can be taken directly from the battery, fuse box, or at a point near the steering column that has the exact same voltage as the vehicle battery with the car off. A voltage on a wire that is slightly less than the battery voltage indicates that the wire is not directly from the battery and should not be used.

Standard Non-OBD II Install

- Cut the wire shown in figure 1 of the power harness.
- Connect the Red wire of the device power harness to the vehicle's constant battery source.
- Connect the Black wire of the device power harness to chassis ground.
- For the starter interrupt installation follow the steps shown in figure 3.
- To use the starter interrupt feature, connect the White wire from the power harness to ignition source.

OBD II Install

- Connect the power harness and the OBDII pass through cable together as show in figure 1 and 2.
- For the starter interrupt installation follow the steps shown in figure 3.
- To use the starter interrupt feature, connect the White wire from the power harness to ignition source.
- Plug the power harness to the device and secure the device under the vehicle dash pad out of view.

LED STATUS		
COLOR	FUNCTION	BEHAVIOR
GREEN	NETWORK	BLINKING FAST=SEARCHING BLINKING SLOW=CELL SIGNAL OK
BLUE	GPS	SOLID ON=GPS OK BLINKING FAST=GPS SEARCHING BLINKING SLOW= NO GPS
RED	POWER	SOLID ON=UNIT IS ON

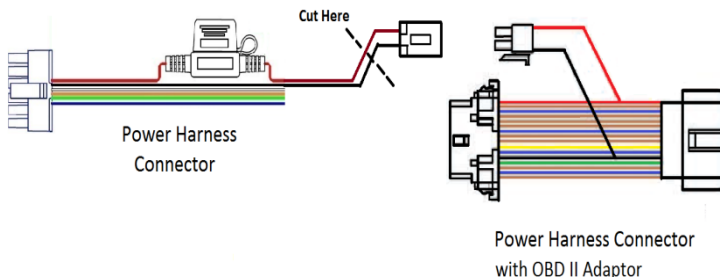


Figure 1

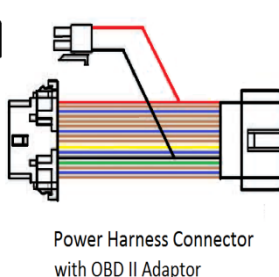


Figure 2

Starter Interrupt

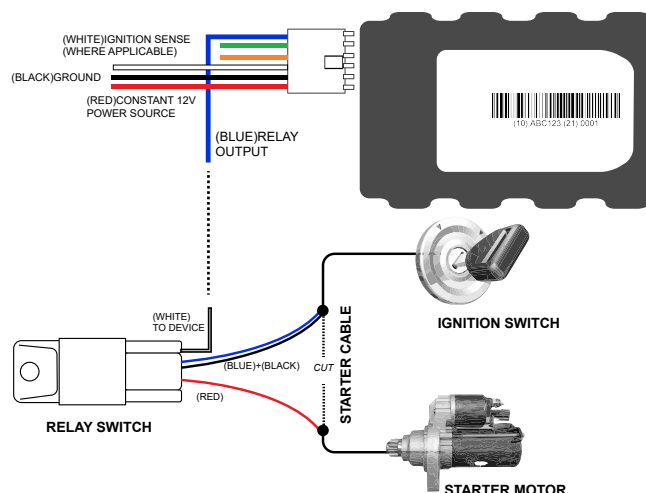


Figure 3

* Power Harness and OBDII Adapter may be soldered as one harness, or available separately.