

GPS Quick Start

- 1 LED Indicator Lights
Blue – GPS
Red – Power
Green – Cellular
- 2 Mini USB Port
- 3 Message Button
- 4 Power Button



BATTERY CHARGING

- Connect AC-DC power adapter to SP8801.
- Plug the AC-DC power adapter into the power outlet.
- The Power LED will flash fast. When the battery is fully charged, the Power LED will stay on.
- It is also possible to charge the SP8824 thru a USB port.
- Complete charging of the battery takes about 5 hours. Please note that before using the SP8824 for the first time you should completely charge the battery for better performance.

TURN ON / TURN OFF

Turn On:

- Option 1: Press the Power Button for at least 3 seconds and release it to turn on the SP8824. The Power LED will light on.
- Option 2: Connect device to charger or external battery, and it will turn on automatically. The Power LED will light on.

Turn Off:

- Press the Power Button for at least 3 seconds; the Power LED will fast flash and then turn off. You will get a vibration feedback as a confirmation. The time it takes to power off depends on the quality of the network at the moment.

MESSAGE BUTTON

- Press and hold the Message Button to initiate the message signal. The device will vibrate as a confirmation.

*Note: to send a notification it is necessary to setup up an alert on the system.

ACCESSORIES

- AC-DC Power Adapter
- Car Kit Charger (optional)

GPS Setup

1 TO GET STARTED

- The system will email you a temporary password
- Go to protekgps.skypatrol.com
- Login and change your password

2 LOCATE NOW

- Click on 'Locate Now' icon
- The system will search for the unit
- You will see a check mark as a confirmation that the command has been processed and will plot its location.

*Right-click on the screen to select a device if you have more than one device in the same account

3 CREATING A GEOFENCE

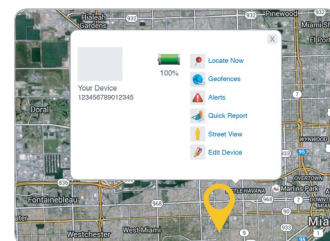
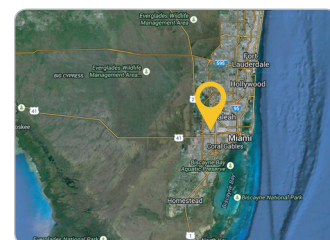
- Click on 'Geofence' icon in the device info window or
- Click on 'Admin' icon and then on 'Geofence' icon
- Adjust your Geofence preferences

4 SETTING UP NOTIFICATION ALERTS

- Click on 'Geofence' icon in the device info window or
- Click on 'Admin' icon and then on 'Alerts' icon
- Select your Alert preferences. You will have the ability to setup multiple alerts, such as: Low Battery, Wake on Motion, Entering Sleep Mode, Speeding, and Message Button.

5 DOWNLOAD PROTEK GPS MOBILE APP

Along with our desktop application, you also have the option to download our mobile app available for both Apple and Android users. Search 'Protek GPS'



(Device Info Window)

