

POLYMER FILTRATION



PMF's **SINTERPORE®** laminates and sintered fiber filter media are designed to meet the challenges of today's polymer filtration industry. All of our polymer filtration media are designed for the specific requirements of the user's process and product.

Selection and optimization of media for a given application can be extremely complex or made easy. Some of the factors to consider when designing and selecting the appropriate media include:

- Suitable media type
- Efficiency
- Particle size retention
- Configuration of filter and system
- Cleaning process type and costs
- Filter re-use criteria
- Expected filter cycle life
- Total cost
- Supplier knowledge and reliability

Optimization of all these factors will have an impact on capital and operating costs as well as product quality and market position. **PMF's fundamental understanding of filtration concepts, technologies and the end user's basic filtration needs will lead to:**

- Quality product manufactured
- Consistent performance/results
- Optimum on-stream life
- Optimum operating cost

TYPICAL FILTER SHAPES

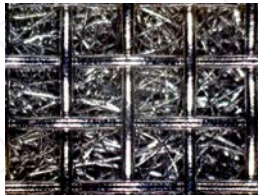
- Pleated cartridges
- Pleated discs
- Disc filters
- Simple flat sheets/discs



Disc filter

TYPICAL APPLICATIONS

- Recycling packs
- Virgin resin screens
- Food grade screens
- Film applications
- Spin packs and fiber applications



Fiber/mesh composite

MATERIALS PROCESSED

- PET
- PS/PES
- PBT
- PP
- PC
- Nylon 6 and 66
- PE
- Polyurethanes



Filter cartridges

Porous Metal Filters, Inc.
 19994 Hickory Twig Way, Spring TX, 77388
 Toll Free: 866-288-2522 Tel: 281-719-1352 Fax: 281-719-1351
www.pmfiler.net sales@pmfilter.net



Toll Free: 866-288-2522

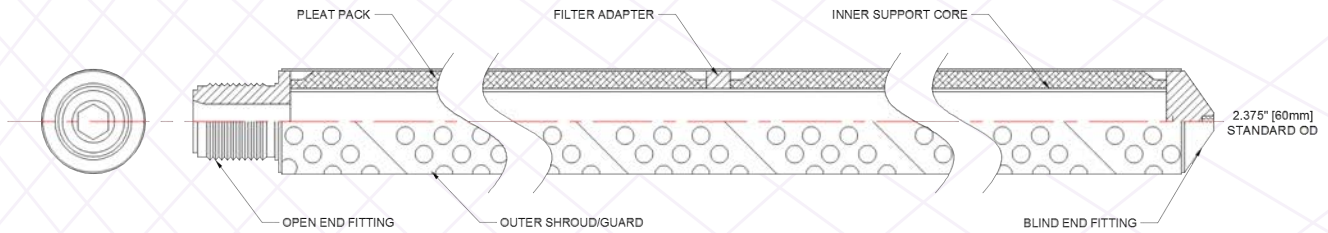
POLYMER METALLIC FILTER CARTRIDGES

WHAT SEPARATES A GREAT FILTER MANUFACTURER FROM THE OTHERS?

- Exceptional customer service
- Product quality
- Fast and reliable information
- Professional and positive attitude

We welcome the opportunity to help with your industrial filter needs.

THE PMF SCREEN CODE IS ILLUSTRATED BELOW



STANDARD CARTRIDGE ORDER CODE

PFC 5 S 10 AF B

316L Media Type

PFC	Sintered Fiber Media, Cylinder	
PFP	Sintered Fiber Media, Pleated	
PWC	Wire Mesh, Cylinder	
PWP	Wire Mesh, Pleated	
PLS	Sintered Laminate, Cylinder	
PLP	Sintered Laminate, Pleated	

Micron Rating

5	40	100
10	60	150
20	70	
30	80	

Fitting Metallurgy

S	316L
N	Nitronic 60

Elastomers

B	Buna N
N	Neoprene
V	Viton
E	EPDP
P	PTFE

Inlet/Cap Fitting Configuration

A	Female 1" NPT
B	Male 1" NPT
C	Open Gasket Fitting
D	Standard 222 double O-rings
E	Standard 226 double O-rings
F	Blind end

Cartridge Length

10	10" - 250 mm
20	20" - 500 mm
30	30" - 750 mm
40	40" - 1000 mm

Custom media, media alloys, fitting configurations, gasket materials and lengths available upon request

Porous Metal Filters, Inc.

19994 Hickory Twig Way, Spring TX, 77388

Toll Free: 866-288-2522 Tel: 281-719-1352 Fax: 281-719-1351

www.pmfiler.net

sales@pmfilter.net



Technical information is subject to change