

**Project**

LVT Restoration and
Micron Sealing at K-12
School in South Dakota

Product

LVT from a top 5
Global manufacturer

Date

May, 2021



The group began with a tour of the facility to understand the scope of the concerns with the LVT performance. The discussion included what had been done for ongoing and spot maintenance, protection of the floors with mats and chair protectors and what activities were taking place in each of the spaces.

A total of 7,700 sf of tile in two colorways were installed in the following areas:

- Front entrance, with border and school abbreviations used in the design
- Corridor leading to an auditorium, gymnasium and carpeted hallway to commons area
- Science Lab
- Multi-use room in-between the two gymnasiums, used as cafeteria dining area and small assemblies

The floor has been installed for approximately 18 months. Floor care maintenance by internal school custodian incorporated a quality auto scrubber with blue pad; neutral cleaner, walk off mats at entrances and felt chair glides for move-able furniture. No on-site applications of wax or finishes had been used as this was sold as a floor not needing any finishes as part of the regular maintenance. A tour of the facility revealed a number of concerns. A statement made by Ms. Niederbaumer was from frustration with the LVT: "Can't pull anything across the floor without leaving a mark!". Scuff marks were very difficult to remove if at all. "We are afraid of being too aggressive with mark removal." There were several long, dark scuff marks, one at the end of the entrance way about 10 feet long in an arc, that they tried to remove. This included a sponge with an abrasive scrub pad, that started to dull the surface so the process was abandoned. There were some shallow scratches and many smaller scuffs that were visible on the dark accent tiles, more so than the beige tiles. A few deeper scratches were also observed, particularly in the science lab and multi-use room.

As a general observation, the tiles were firmly adhered to the subfloor and not fitted to each other with limited gapping.

Environment:

It was a cool damp day with ongoing showers, and temperatures in the upper 40's to low 50's.

Process:

I. The floor was cleaned by wet scrubbing using standard 175 rpm swing machines and a Maroon X Restoration Pad. The pad was flipped every 500 sq. feet. NeverStrip Deep Clean was used at 4 oz./gallon of water. The cleaner solution resided on the floor for 10 minute prior to scrubbing. The scrubbing goals were 1) to deep clean the floor; 2) remove/reduce a large percentage of scuffs, marks and stains and 3) buff out or reduce the visibility of surface scratches on the UV cured urethane applied in the factory.

II. After drying, an inspection took place to evaluate the visible scuff marks and scratches. The scuffs and scratches were largely no longer visible to the naked eye while standing on the floor. Remaining scuffs were gently buffed by hand with water and the Maroon X Restoration Pad. The one long scuff referenced earlier had been significantly removed but a final removal was quickly achieved with a swing machine, the restoration pad and water.

III. The first application of Vinyl Seal was applied using a microfiber pad, with one person spraying the Vinyl Seal on the floor in four tile sections using a small nozzle bottle, while the other spread the Vinyl Seal on the floor tiles. The motion was gentle but brisk as the Vinyl Seal dries quickly, particularly in low humidity environments.

IV. After 10 to 15 minutes, the next coat was applied.

V. Another 10 to 15 minutes, coat three.

VI. Another 10 to 15 minutes, coat four.

The corridor closest to the auditorium as well as the science lab were done first, with the final coat being completed around noon. From there the crews moved to the large multi-use area between the gymnasiums, and finishing the project completing the front entrance last.

Here are a series of before and after photos with descriptive commentary.



Multi-use room by gym entrance. Many scratches and scuffs visible on the black tile.



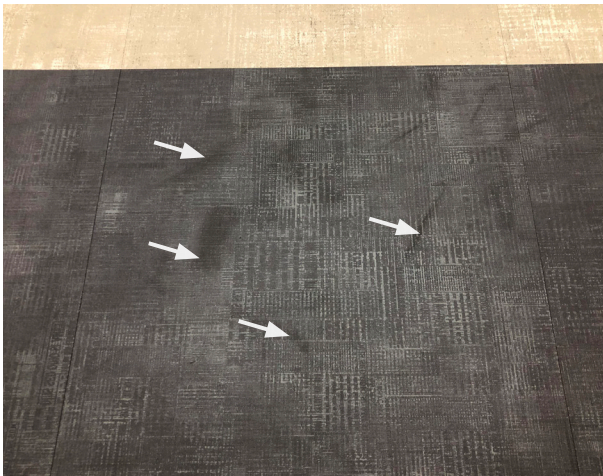
Same area after full treatment.



Top of entry lobby with very long arcing dark scuff. Attempts by the school to remove the mark using an abrasive sponge scrub pad resulted in a dulled-out spot (circled).



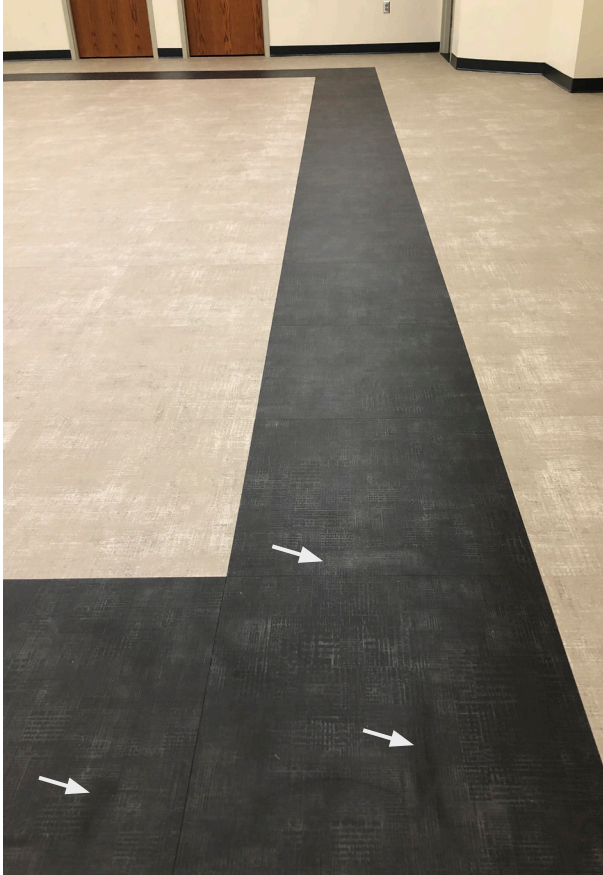
After treatment, the scuff was 100% removed and the dulled area eliminated with no sign of damage.



Multi-use room where black border showed more scuffs and scratches. Note this room has portable dining tables and chairs brought in and out regularly, which had quality felt glides.



Same tiles after full treatment. Some of the deeper scratches were not removed by this more tempered approach to refurbishment in which case it was recommended to replace those tiles with attic stock and applying Vinyl Seal.



Science Lab with some deeper scratches, scuffs and general difficult to keep the surface clean.



After treatment, scuffs were gone and the appearance of most scratches eliminated. There were deeper scratches that we attempted to repair with the restoration pad by hand. We were not successful and suggested replacing these tiles with attic stock.

Here are some additional photos before and during treatment:



Inspecting the Multi-use room.



Cleaning the science lab.



Applying the Vinyl Seal.

Summary:

We believe all of the scuffs were removed. Many surface scratches were substantially removed or were far less visible after the restorative process. The overall gloss level was slightly elevated but to the naked eye was minimally changed.



Front entry lobby after treatment. The long dark scuffs in early photos were at the top and left side of this space.



Appendix:

Vinyl Seal is a Member of NeverStrip's Micron Sealer product line. The Micron, lithium/silicate based sealers, were brought to market by NeverStrip over 7 years ago. The Micron sealers are used on essentially all hard surface flooring including LVT, ceramic, concrete.

The Vinyl Seal core Value Proposition for facility owners with LVT and other resilient flooring are:

1) provides protection from scuffs, surface scratches, and stains; 2) is easy to use; dries in 10 minutes and scuffs, scratches and stains are cost effectively removed on a continuous basis with routine floor care practices; 3) many customers say flooring, including LVT, is easier to clean and keep clean than bare floor and 4) a restorative process is available for scuffed/scratched resilient flooring (LVT, Linoleum, Sheet Vinyl, VCT, Rubber, etc.).

NeverStrip is a Chicago-based manufacturer of floor sealers and coatings. The Company is an approved Starnet and Fuse Alliance Vendor Partner. NeverStrip's customers form a significant nationwide network of quality floor care maintenance contractors, many of whom are also commercial flooring dealers with floor care maintenance divisions.