

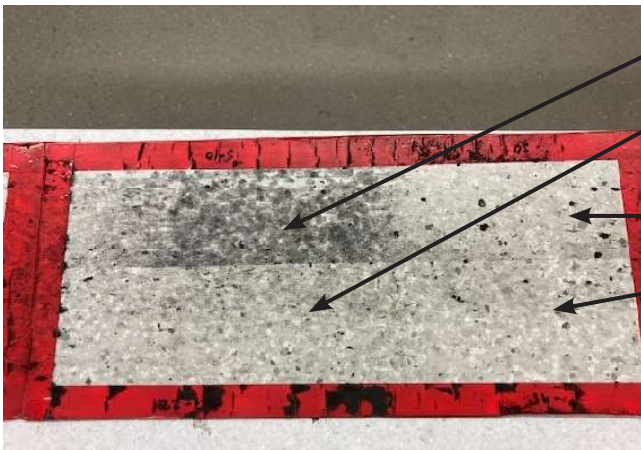
## NEVERSTRIP VINYL SEAL - SURFACE RESTORATION PRODUCT TEST

**Tested product:** NeverStrip Vinyl Seal

**Tested substrates:** Quartz Composition Tile unworn and worn samples

The sealer was applied three times according to manufacturer instructions.  
 The sealer was applied both on unworn and worn areas.

**Quartz Composition Tile sample after dirt pickup test;  
 before cleaning:**



- Worn area: original surface**
  - Heavy dirt pick up
- Worn area: sealed with NeverStrip**
  - Dirt pickup equal to unworn original surface
- Unworn original surface**
- Unworn original surface: sealed with NeverStrip**
  - Dirt pickup equal to original surface

**Quartz Composition Tile sample after dirt pickup test;**

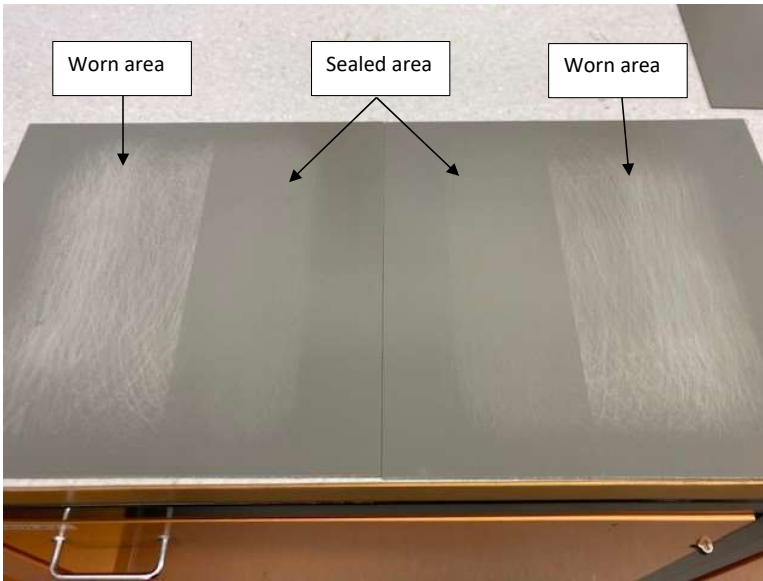


- Worn area: original surface**
  - Dirty after cleaning
- Worn area: sealed with NeverStrip**
  - Easy to clean, equal to unworn original surface
- Unworn original surface**
- Unworn original surface: sealed with NeverStrip**
  - Easy to clean; equal to original surface

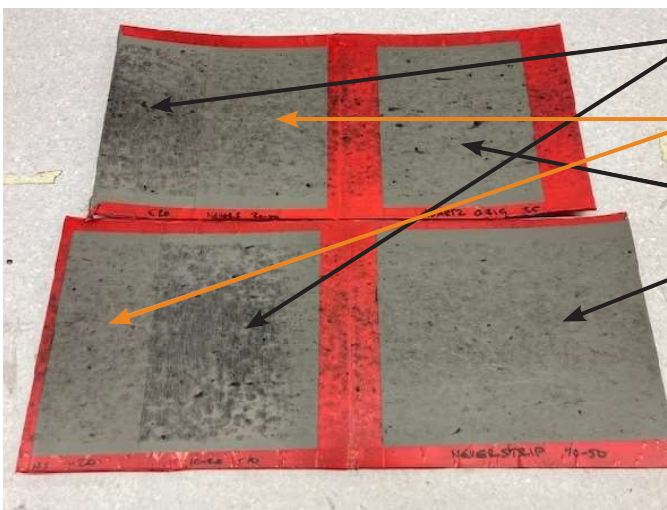
## NEVERSTRIP VINYL SEAL - SURFACE RESTORATION PRODUCT TEST

**Worn Quartz Composition Tile samples:  
 half of the worn area is sealed with NeverStrip:**

- NeverStrip is hiding scratches well



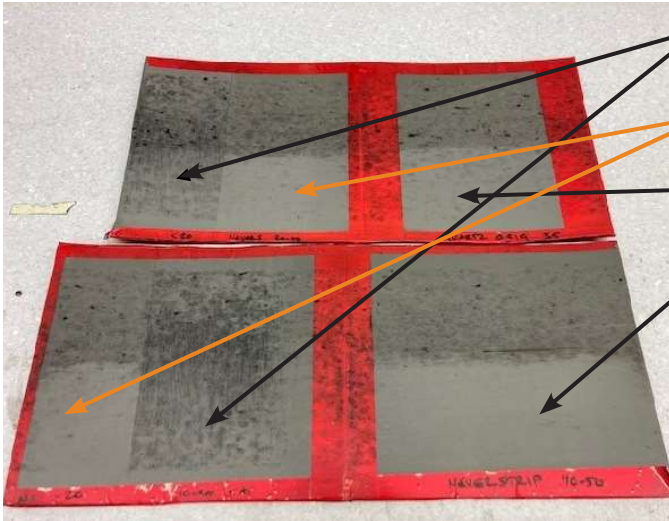
**Quartz Composition Tile after dirt pickup test;  
 before cleaning:**



- Worn area; original surface**
  - Heavy dirt pickup
- Worn area; sealed with NeverStrip**
  - Dirt pickup equal to original unworn area
- Unworn original surface area**
- Unworn original; sealed with NeverStrip**
  - Dirt pick equal to unworn original

## NEVERSTRIP VINYL SEAL - SURFACE RESTORATION PRODUCT TEST

Quartz Composition Tile after dirt pickup test;  
before cleaning:



**Worn area; original surface**

- Dirty after cleaning

**Worn area; sealed with NeverStrip**

- Easy to clean, equal to unworn original surface

**Unworn original surface; easy to clean**

**Unworn original surface; sealed with NeverStrip**

- Easy to clean; equal to original surface

### Conclusion:

- NeverStrip Vinyl Seal seems to work fine on Quartz Composition Tile.
- It restores the worn surface, hiding the scratches and improves the cleanability of the worn surface.
- Also the adhesion to Quartz Composition Tile was ok.
- NeverStrip Vinyl Seal increases the gloss level significantly.
- On unworn area the gloss rose from 35 to 45-50.
- On worn areas the gloss returned quite close to original level, depending on the level of wear.
- According to this test NeverStrip Vinyl Seal can be used on Quartz Composition Tile.
- Chemical resistance was not tested.