



PACKAGES & ACCESSORIES GUIDE



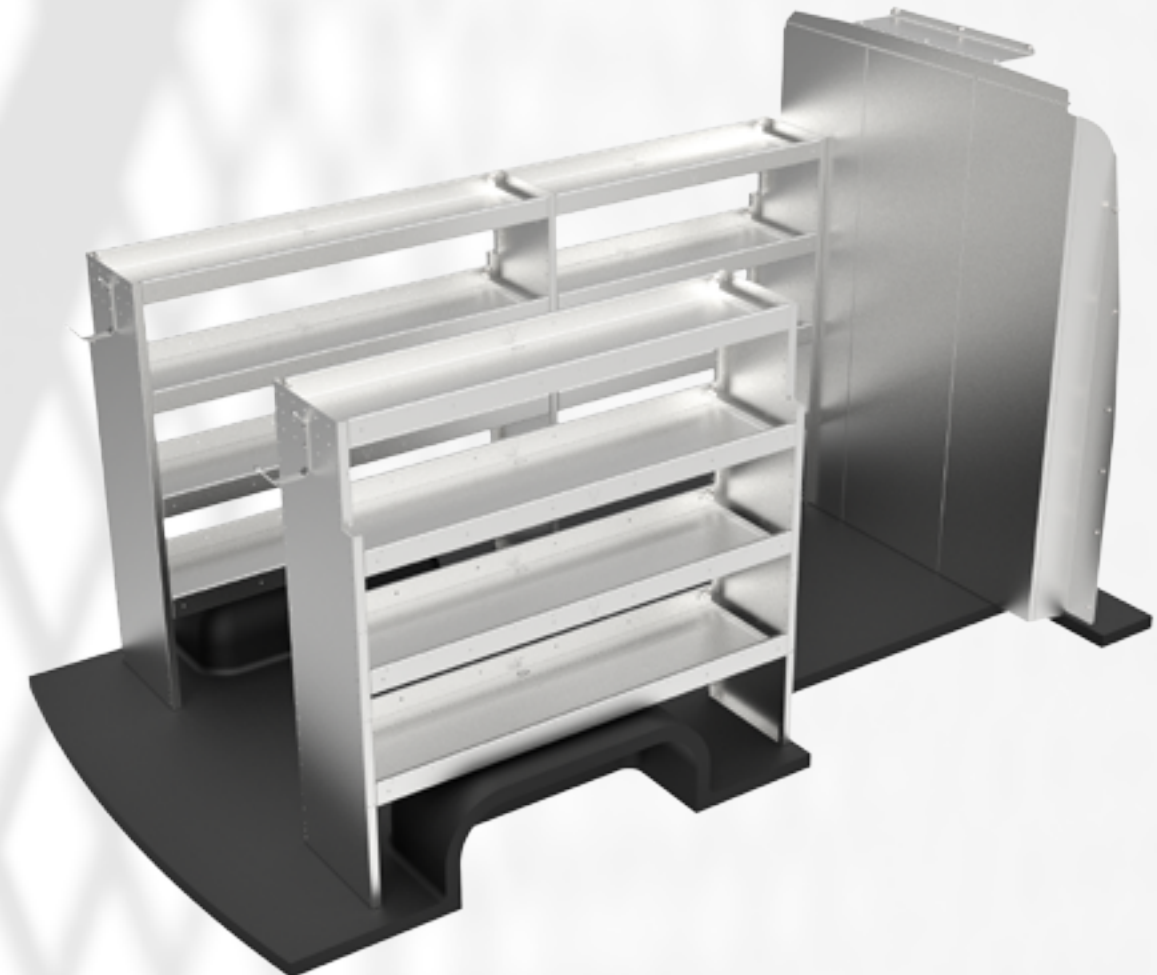
The V Spec Techno product line is designed with a specific goal: to meet our customer's needs. We understand that your work vehicle is an extension of yourself and your business. That thought prevailing, it goes into everything we manufacture. Our products are made of 100% North American .100 Marine Grade Aluminum and carry a limited lifetime warranty. 100% Aluminum means - lightweight, no rust, no paint and no plywood. It is built to last.

Packages

Our trade packages are intended to help the end user design his own vehicle according to his specific needs. Each package can be modified with many different shelf lengths and bulkhead partition options.

We have designed our shelving modules so they can be accessorized to your needs, regardless of the trade you work in. All our packages start from a basic setup and it is the accessories you choose that determine the end result. All of our shelving units are designed in a modular fashion and can be adjusted to your changing needs. Altering the initial setup does not translate into purchasing new modules they are designed specifically for that purpose. Shelves can be added or removed without having to disassemble the entire unit. These packages are a reference tool to help you visualize a standard or complex setup. There are various options to satisfy every end user's needs.

Your qualified dealer will guide you through this process to ensure that the proper shelving modules are chosen according to the specific vehicle size. Please refer to the vehicle dimensions in the "Reference" tab of our website at www.vspectechno.com to ensure proper vehicle fitment.



The "Base" package consists of a bulkhead partition for either low or high roof vans available in solid, Lexan window, perforated, or swing door options. It is generally installed with three shelving modules, two on the driver side and one on the passenger side either 44" or 58" high. The shelving modules are available with 4 or 5 adjustable shelves. The top shelf is 14" wide and the bottom shelves are 16" wide. Shelving modules are available in 24", 36", 48", 60", 72", 84" and 96" in length and do not require a center support. The package also comes with two hooks.

Modules, shelves and bulkhead partitions are constructed of 100% North American Marine grade Aluminum

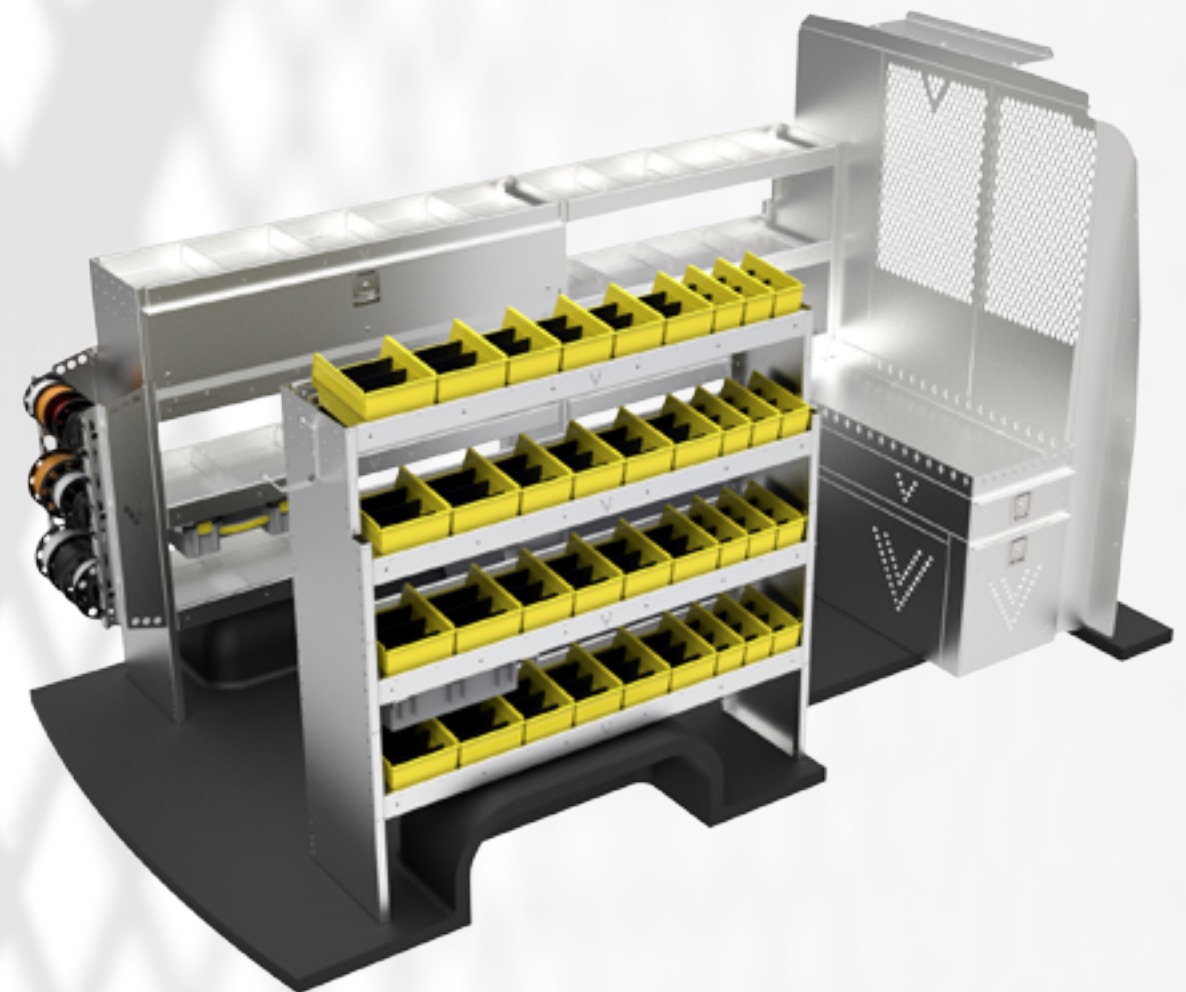
PLUMBER



The “Plumber“ package consists of a bulkhead partition for either low or high roof vans available in solid, Lexan window, perforated, or swing door options. It is generally installed with three shelving modules, two on the driver side and one on the passenger side, 44” or 58” high. The shelving modules are available with 4 or 5 adjustable shelves. The top shelf is 14” wide and the bottom shelves are 16” wide. Shelving modules are available in 24”, 36”, 48”, 60”, 72”, 84”, and 96” in length and they do not require a center support. The package also comes with a large drawer unit, a small drawer and a top crown. Also included is a height adjustable door, two parts holder cases, a hook, a vise module(vise not included), multiple plastic bins and a caulking tube holder.

Modules, shelves and bulkhead partitions are constructed of 100% North American Marine grade Aluminum

ELECTRICAL



The “Electrical” package consists of a bulkhead partition for either low or high roof vans available in solid, Lexan window, perforated, or swing door options. It is generally installed with three shelving modules, two on the driver side and one on the passenger side, 44” or 58” high. The shelving modules are available with 4 or 5 adjustable shelves. The top shelf is 14” wide and the bottom shelves are 16” wide. Shelving modules are available in 24”, 36”, 48”, 60”, 72”, 84”, and 96” in length and they do not require a center support. The package also comes with a large drawer unit, a small drawer unit and a top crown. Also included is a height adjustable door, two parts holder cases, a hook, wire spool holder and multiple plastic bins.

Modules, shelves and bulkhead partitions are constructed of 100% North American Marine grade Aluminum

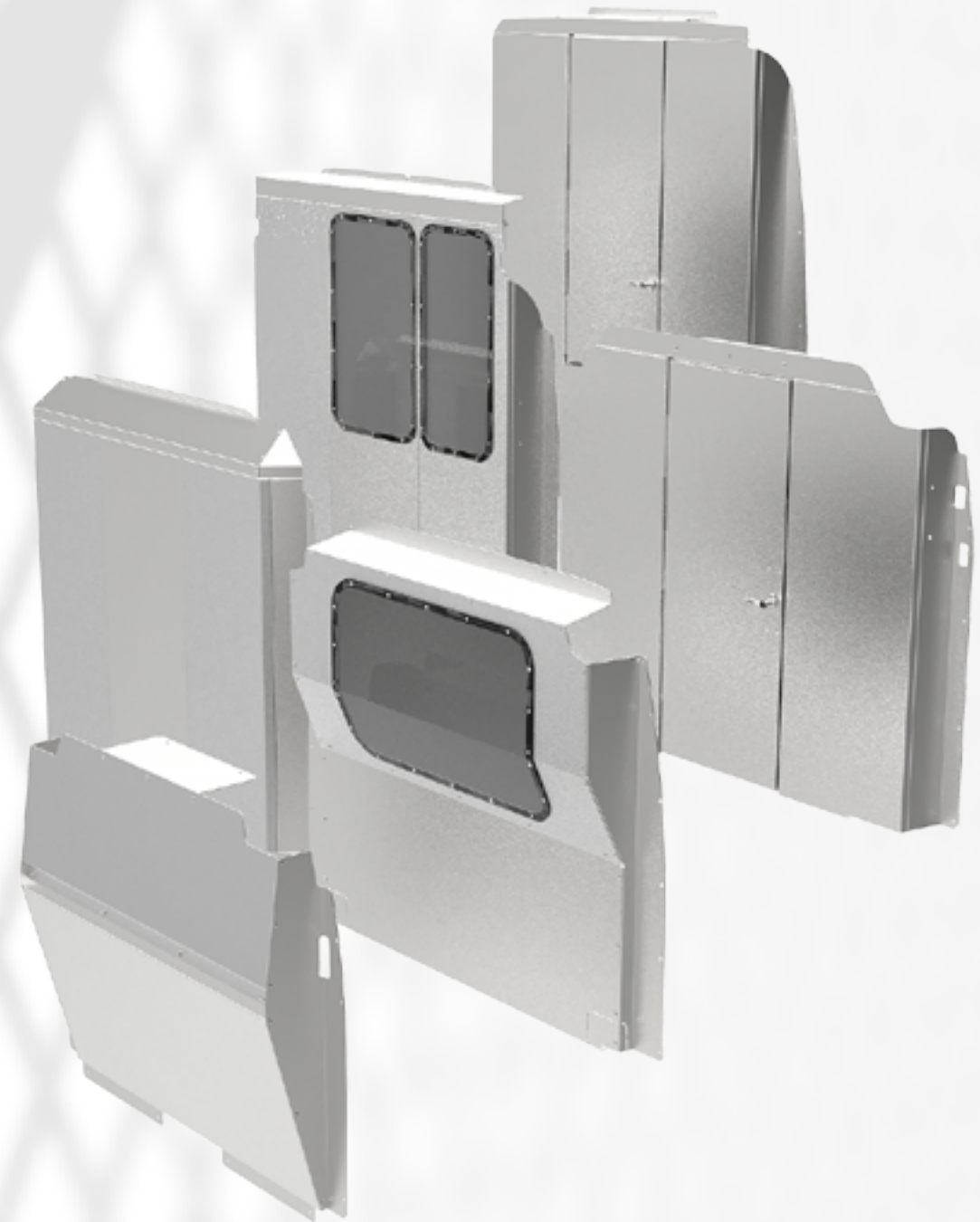
HVAC



The HVAC package consists of a bulkhead partition for either low or high roof vans available in solid, Lexan window, perforated, or swing door options. It is generally installed with three shelving modules, two on the driver side and one on the passenger side available in 44" or 58" high. The shelving modules are available with 4 or 5 adjustable shelves. The top shelf is 14" wide and the bottom shelves are 16" wide. Shelving modules are available in 24", 36", 48", 60", 72", 84", and 96" in length and they do not require a center support. The package also comes with a large drawer unit, a small drawer unit and a top crown, two single tank holders a hook and a five-tank shelf holder module.

Modules, shelves and bulkhead partitions are constructed of 100% North American Marine grade Aluminum

PARTITIONS



The bulkhead partitions are available and adapted for compact and full sized vehicles with low, medium and high roofs. The V Spec Techno partition has a unique feature; it is recessed approximately 6" to offer more seat reclining options. We offer 4 options, Solid, Grilled, Lexan Window, or Hinged Door.

SHELVES



Shelving modules are designed to be a generic fit which means they are adaptable to most if not all vehicles. They are available in 2 standard heights, 44" and 58". The standard shelving module is sold with 4 or 5 shelves but the bolt-on design permits the end user to add or remove shelves in only a few minutes. All shelf bases are pre-punched to accept (optional) dividers at every inch held with machine screws. The shelves have a 3" lip and are 16" wide. Modules are available in lengths ranging from 24" to 96" long and are rated at 150lb/linear ft.



(1) Adjustable doors



(2) Drawer combo
(3) Lock in-Lock out drawer system
(dividers sold as an option)



(4) Single bottle holder (Shown in HVAC package)
(5) Vertical Bottle Holder



(6) Shelf Tank Holder
Options ranging from 2 to 5 tanks per shelf. Security straps included



(7) Small Parts plastic case
Individual units mount under a shelf with brackets.
(8) Stand-alone case module



(9) Plastic Bins
Available in different widths and heights and require a bin bracket.
(10) Dividers.
5 units per pack

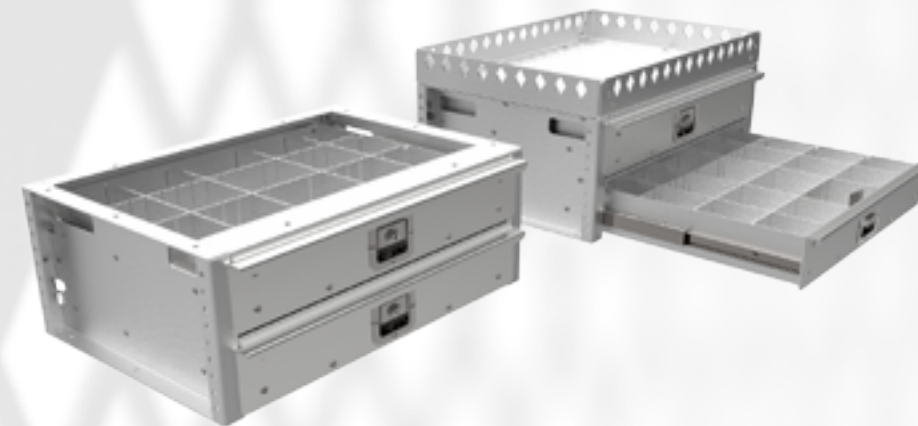
DRAWERS

The Tool drawer system can be installed as individual units or stacked on top of one another. They are also pre-punched to accept (optional) dividers at 1" increments.

(11) The small drawer is assembled using UHMW strips and is rated at 250lb.

(12) The large drawer is built using bearing rollers and is rated at 350lb.

(13) The top crown is a valuable addition to help keep tools or boxes in place.



(2) Drawer Combo unit. Fits neatly under shelf or over a large tool drawer. Optional dividers can be installed at 1" increments. The 2 drawer combos are built with 150lb sliders and have a paddle lock. Ideal for small parts or to store valuable tools and items. An optional top crown is required for stand-alone installation.

(14) The 9 Drawer Module.
Each drawer is 3" high and has its own paddle lock. A single key can be used to unlock each drawer. Each drawer is assembled with 150lb sliders. The drawer bases are pre-punched at every inch to accept (optional) dividers. The unit is assembled with 2 top shelves as shown in the picture.



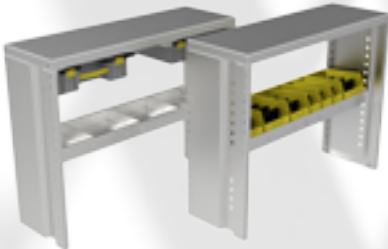
ACCESSORIES



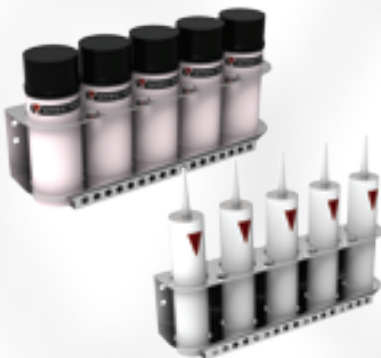
(15) Documents holder
Letter or Legal



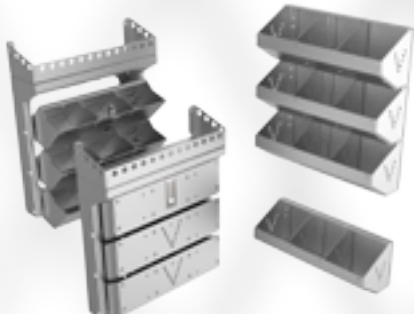
(16) Locker Module
The door can open from the left or right.



(17) Aluminum workbench
Dividers, bins and small parts case sold as options



(18) Spray can holder
(19) Caulking Tube Holder



(20) Tilting hardware module
(21) Fixed hardware module



(22) Ladder hook
(23) Large hooks 6"
(24) Small hooks 3"



(25) Centre console with base



(26) Folding vise support (locks in either opened and closed positions)
*Vise not included



(27) Wire Spools Holder
Supplied with 3 horizontal supports

ACCESSORIES

- 1 V-DOOR-24 (Adjustable door with paddle lock. Extends from 10" to 14")
V-DOOR-36
V-DOOR-48
V-DOOR-60
- 2 V-DRW-150-2 (24"l x 16"d x 10h")
- 3 V-500-24-3/ V-500-24-6. (24"l x 3"d or 6"d)
V-500-36-3/ V-500-36-6. (36"l x 3"d or 6"d)
V-500-48-3/ V-500-48-6. (48"l x 3"d or 6"d)
- 4 V-BOT-1 Single bottle holder (18"h x 12"w x 3"d)
- 5 V-BOT-44 (holds 3 tanks) Stand-alone unit (44"h x 13"w x 16"d)
V-BOT-58 (holds 5 tanks) Stand-alone unit (58"h x 13"w x 16"d)
V-BOT-2 (2 bottles per shelf)
V-BOT-3 (3 bottles per shelf)
- 6 V-BOT-4 (4 bottles per shelf)
V-BOT-5 (5 bottles per shelf)
- 7 V-PTO-2 (2" individual case & bracket) 2.5"h x 18"w x 14"d
V-PTO-4 (4" individual case & bracket) 4.75"h x 18"w x 14"d
- 8 V-PTO-1858-10(module w/10 cases) 58"h x 20.5"w x 16"d
V-PTO-1844-8(module w/8 cases) 44"hx 20.5"w x 16"d
- 9 V-BIN-4 (4" wide). V-BIN-6 (6"wide). V-BIN-8(8"wide). Bins are 4"h or 6"h x 11.5"d
- 10 V-DIV-14(14"l x 3"h dividers) packs of 5 dividers
V-DIV-16(16"l x 3"h dividers) packs of 5 dividers
- 11 V-DRW-40-6. Small drawer (48"l x 20"w x 6"h)
- 12 V-DRW-40-20. Large drawer (48"l x 20"w x 19"h)
- 13 V-DRW-CRO. Top crown (48"l x 20"w x 3"h)
- 14 V-DRW-150-9. 9 Drawer module w/paddle locks. (58"h x 24"w x 16"d)
- 15 V-LEG-1. Legal format literature holder (20"w x 12"w x 3"d)
V-LET-1. Letter format literature holder (17.5"h x 12"w x 3"d)
- 16 V-LOK-1844. Also available in straight back for trailers and cube vans. (44"h x 18"w x 16"d)
V-LOK-1858. Also available in straight back for trailers and cube vans. (58"h x 18"w x 16"d)
- 17 V-WRK-AL-28. (28"h x 48"l x 16d)
V-WRK-AL-36. (36"h x 48"l x 16"d)
- 18 V-PNT1. Spray paint can holder. (16"w x 6"h x 4"d)
- 19 V-CAU1. Caulking tube can holder. (16"w x 6"h x 4"d)
- 20 V-PTS-1. Tilting hardware parts module. (19.5"h x 16"w x 5"d)
- 21 V-PTS-3. Fixed/single hardware parts holder. (16"w x 6"h x 5.5"d)
- 22 V-HOOK-LAD (step ladder/ladder hooks). Sold in pairs.
- 23 V-HOOK6 (6" hook)
- 24 V-HOOK3 (3" hook)
- 25 V-CONSO Centre console with base and paddle- lock. (20"h x 18"l x 13"w)
- 26 V-VISE (vise not included) (32"h x 12"w x 3"d)
- 27 V-SPOOL (wire spool holder.) Holds up to 5 wire spools. (32"h x 16"w x 8"d)



LIMITED LIFETIME WARRANTY

V SPEC TECHNO warrants to the original purchaser that all products manufactured by V SPEC, including the complete V Line, are exempt of manufacturing defects from the initial purchase date and for the normal life span of the product. All inquiries or claims should be addressed to our authorized distributors or directly to V SPEC TECHNO Inc. Proof of purchase may be required.

Canadian location:

1200 rue Nationale
Terrebonne, QC J6W6C1
Canada
Tel: 1.450.961.2499
Fax: 1.450.961.9004
info@vspectechno.com



USA location:

3 Area Development Drive
Plattsburgh, NY 12901
USA
Tel: 1.450.961.2499
Fax: 1.450.961.9004
info@vspectechno.com



WWW.VSPECTECHNO.COM