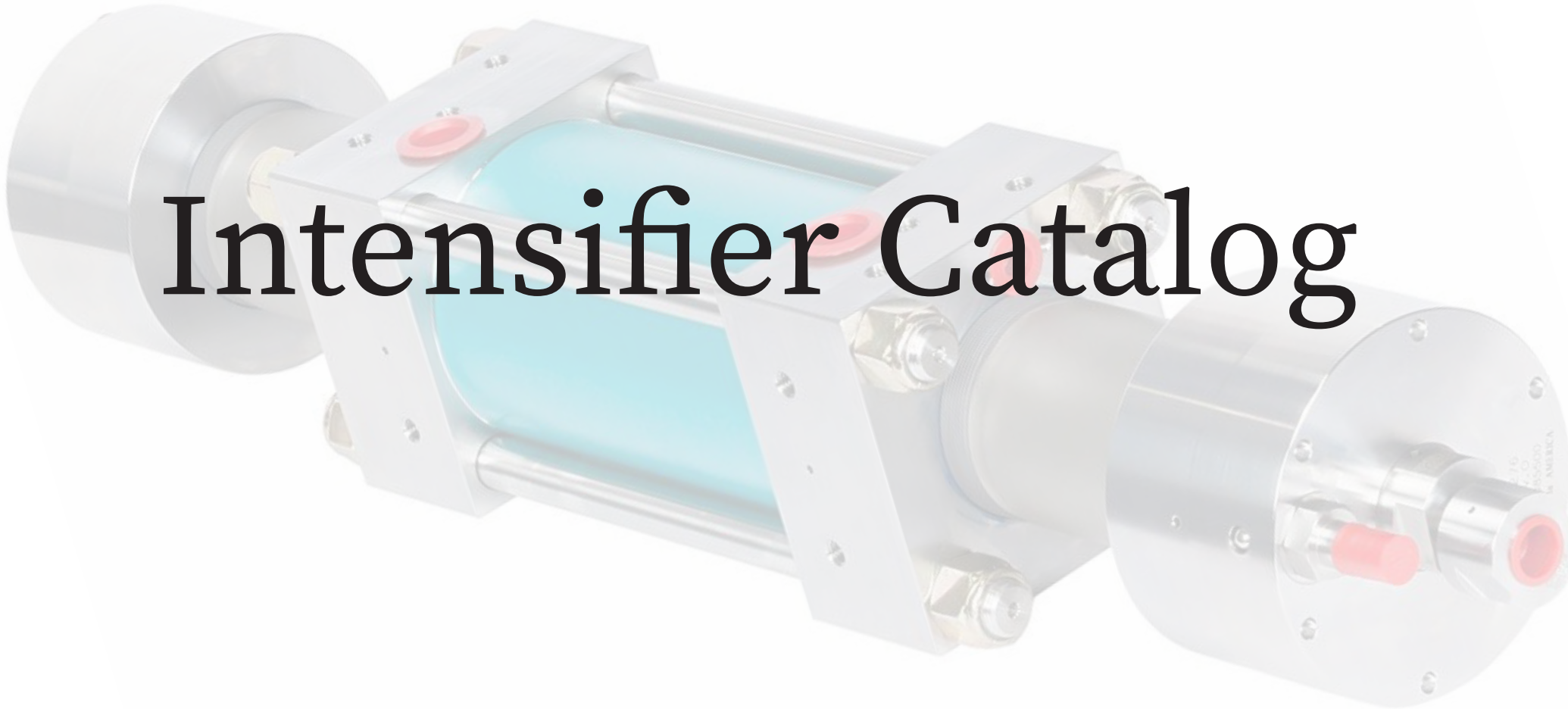


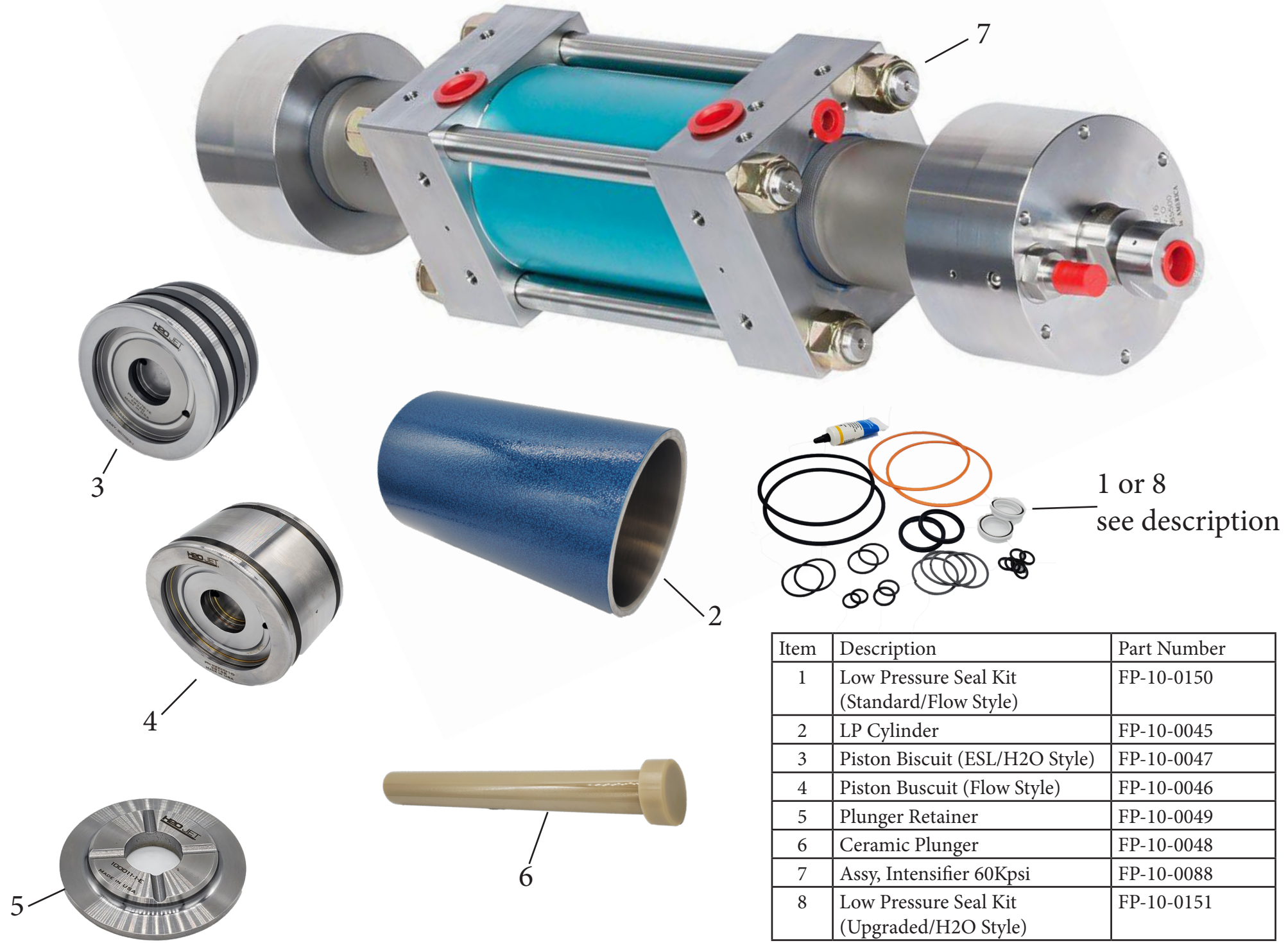
# Ranger MFG

## Intensifier Catalog



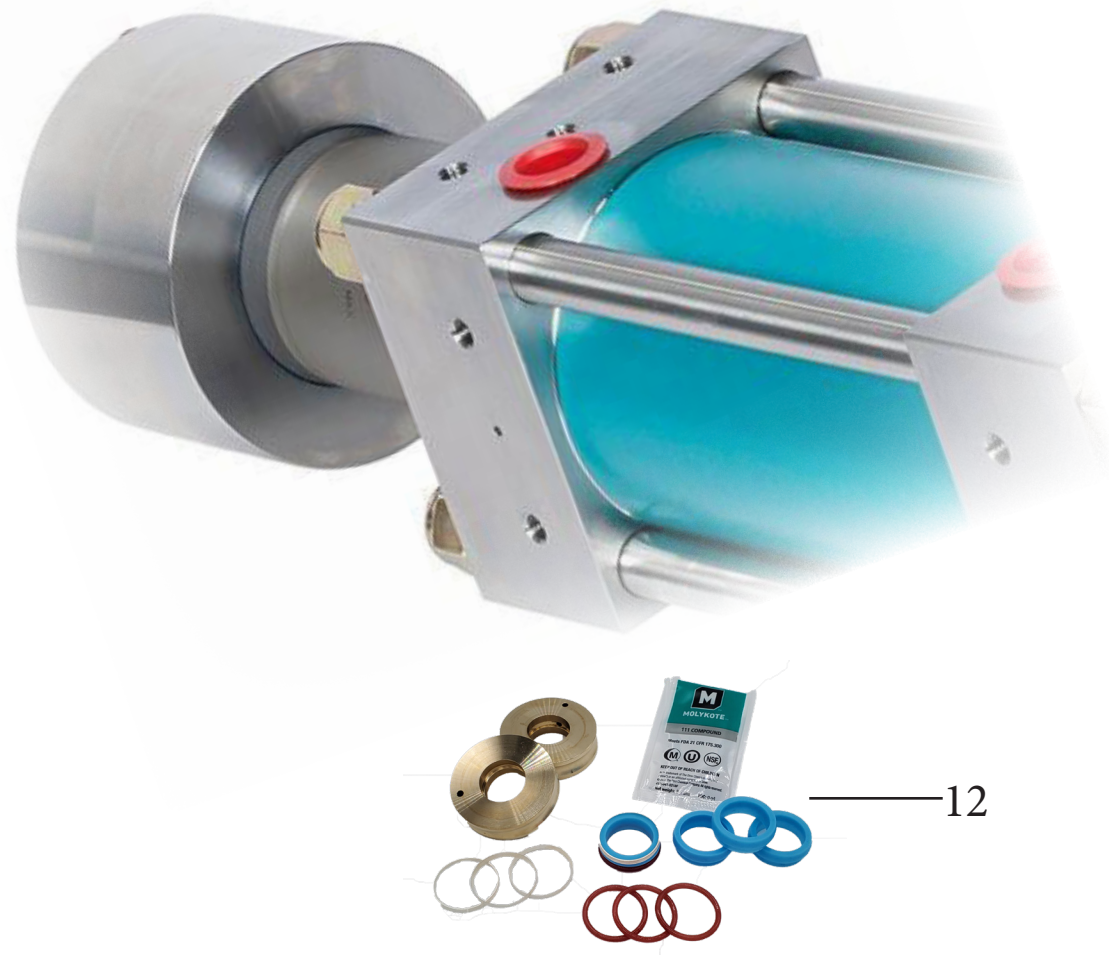
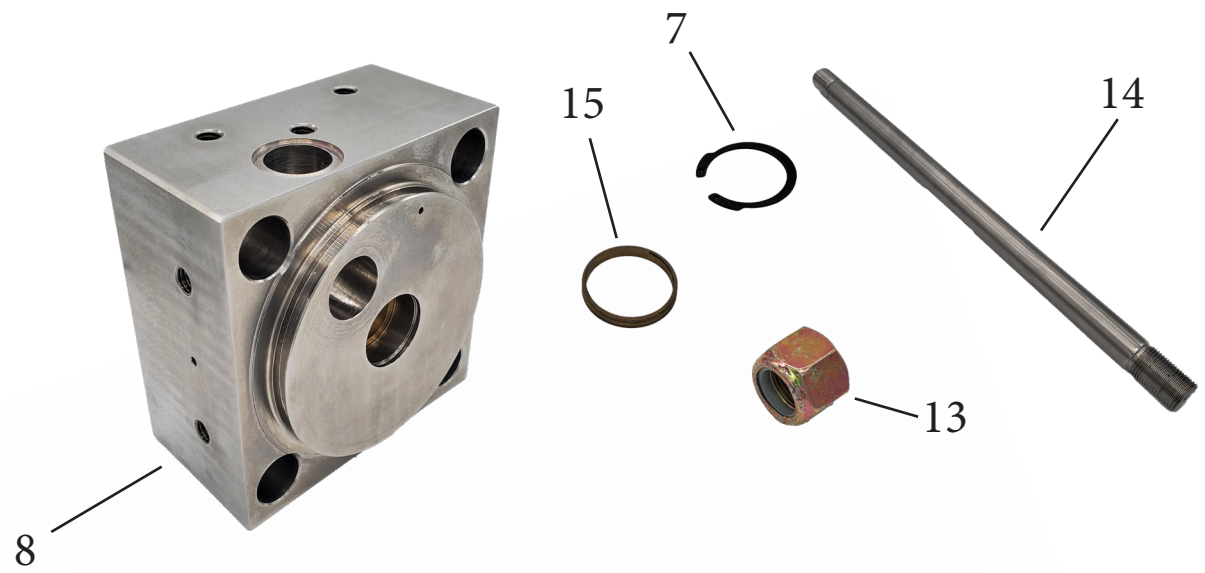
Ranger Manufacturing • 770-536-8031 • [parts@rangermfg.com](mailto:parts@rangermfg.com)

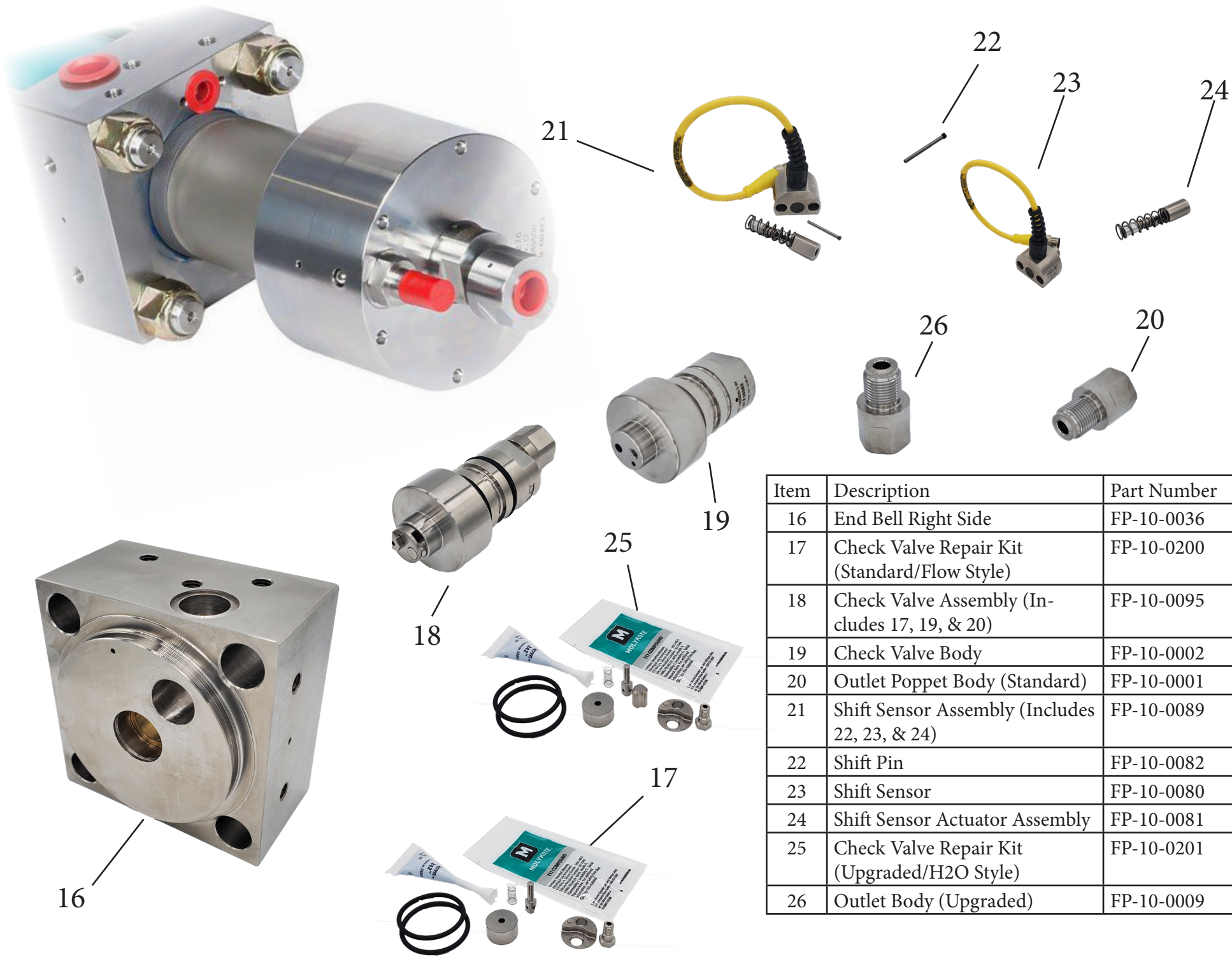




Item	Description	Part Number
1	Low Pressure Seal Kit (Standard/Flow Style)	FP-10-0150
2	LP Cylinder	FP-10-0045
3	Piston Biscuit (ESL/H2O Style)	FP-10-0047
4	Piston Biscuit (Flow Style)	FP-10-0046
5	Plunger Retainer	FP-10-0049
6	Ceramic Plunger	FP-10-0048
7	Assy, Intensifier 60Kpsi	FP-10-0088
8	Low Pressure Seal Kit (Upgraded/H2O Style)	FP-10-0151

Item	Description	Part Number
7	Rod Seal Retaining Clip	FP-10-0050
8	End Bell, Left Side	FP-10-0035
9	End Cap	FP-10-0026
10	Backup Sleeve	FP-10-0027
11	High Pressure Cylinder	FP-10-0025
12	High Pressure Seal Kit	FP-10-0175
13	Tie Rod Nut	FP-10-0053
14	Tie Rod	FP-10-0052
15	Rod Seal Backup Ring (Brass)	FP-10-0028





Item	Description	Part Number
16	End Bell Right Side	FP-10-0036
17	Check Valve Repair Kit (Standard/Flow Style)	FP-10-0200
18	Check Valve Assembly (Includes 17, 19, & 20)	FP-10-0095
19	Check Valve Body	FP-10-0002
20	Outlet Poppet Body (Standard)	FP-10-0001
21	Shift Sensor Assembly (Includes 22, 23, & 24)	FP-10-0089
22	Shift Pin	FP-10-0082
23	Shift Sensor	FP-10-0080
24	Shift Sensor Actuator Assembly	FP-10-0081
25	Check Valve Repair Kit (Upgraded/H2O Style)	FP-10-0201
26	Outlet Body (Upgraded)	FP-10-0009



770-536-8031

parts@rangermfg.com

Located just 1 hour Northeast of Atlanta, Ranger Manufacturing is your all in one source for OEM parts. Are you having trouble with your current provider? Long lead times, expensive overseas manufacturer, or just need local guaranteed stock, then Ranger Manufacturing is the shop for you. OEM quality with the pricing and availability you need. Give us a call to discuss your parts needs today!

