



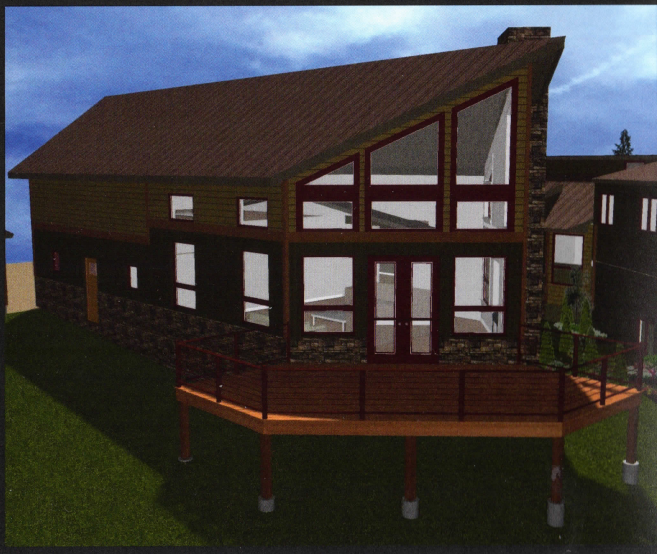
LICENSED ARCHITECT

IOWA - 06580
ILLINOIS - 015868
NCARB - 72706

Edward J Shannon is an Architect with a practice emphasizing Custom Residential and Light Commercial projects. Mr. Shannon earned Architecture degrees from Iowa State and Virginia Tech. He is a member of The American Institute of Architects (AIA) and The National Council of Architecture Registration Boards (NCARB). He is a Licensed Architect in Iowa and Illinois.

The Practice has expertise in:

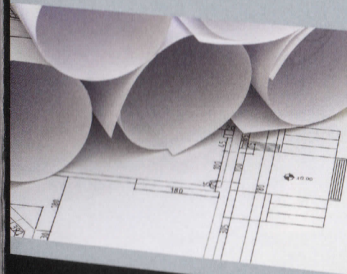
- Vacation Homes
- Custom Homes
- Additions
- Renovations
- Restaurants
- Multi-Family Residential
- Retail Spaces



The Addition (above) to this 1930's Bungalow Cottage (right) will harmonize with the existing by giving attention to massing and detail.



Find me on Houzz and Facebook



Midwest Vacation Home Design Guide

EDWARD J SHANNON ARCHITECT PLC

Spirit Lake Studio
515 779 9050

Des Moines Office
515 779 9050

www.edwardjshannon.com



**THE AMERICAN
INSTITUTE
OF ARCHITECTS**

Building a Vacation Home is Exciting! Your design deserves a thorough process.

Whether you are building a new vacation home or adding & renovating an older home, much thought should go into the design and planning. As such, going through a thorough design process with a seasoned, licensed design professional will guarantee your project reaches its ultimate potential.

As a licensed architect, I have been trained in Aesthetics, Space Planning, and Materials & Methods. This ensures your design looks, functions and performs to high standards. As you think about building or renovating, I offer you **FIVE DESIGN PRINCIPLES** I typically employ in my projects.

- Light & View
- Harmony with Site
- Spacious, yet Quaint
- Rustic Materials
- Relaxed Feel

LIGHT & VIEW

Orient the Vacation Home toward optimum view



This house sits on a bluff overlooking Lake Michigan. The great room is centered on the view.

HARMONY WITH SITE



This house is built into a sloping site, with a front approach. Great care was made to ensure the house blended with the site.

SPACIOUS, YET QUAIN

Your home should feel comfortable for one person as well as many. Attention to proportion and scale will accomplish this.



RUSTIC MATERIALS

A simple garage & guest suite is elevated with use of wood and exposed framing.

RELAXED FEEL

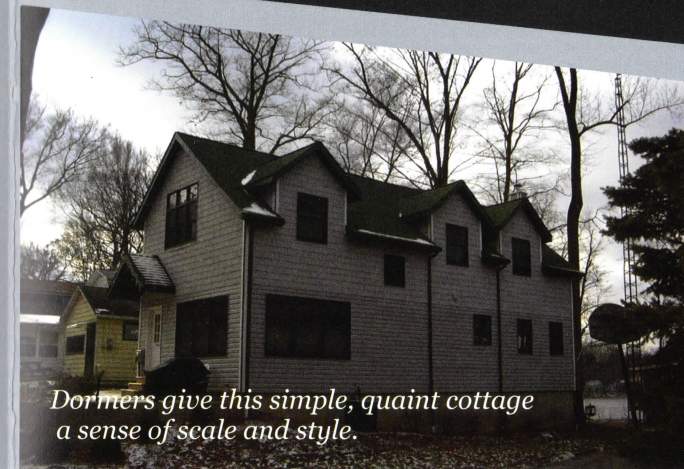
A variety of cladding materials takes this addition/renovation to a new level. It feels informal, yet elegant in its own way.



Before - A simple spec cottage from the 1980's.



After - The house is now transformed in to a year round lake residence with many new amenities.



Dormers give this simple, quaint cottage a sense of scale and style.