



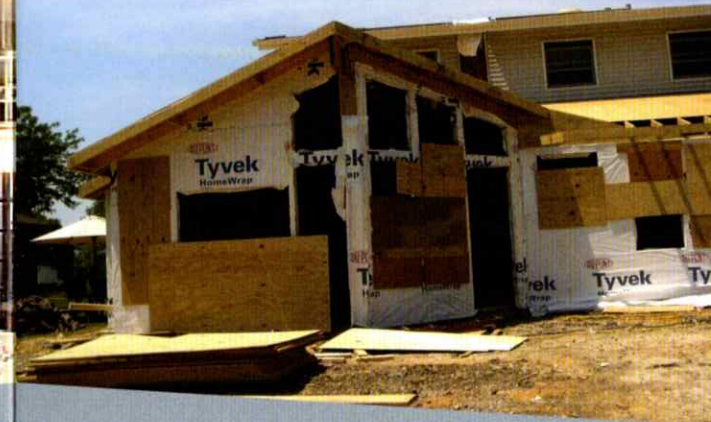
LICENSED ARCHITECT

IOWA - 06580
ILLINOIS - 015868
NCARB - 72706

Edward J Shannon is a sole proprietor Architect with a practice emphasizing Custom Residential and Light Commercial projects. Mr. Shannon earned Architecture degrees from Iowa State and Virginia Tech. He is a member of The American Institute of Architects (AIA) and The National Council of Architecture Registration Boards (NCARB). He is a Licensed Architect in Iowa and Illinois.

The Practice has expertise in:

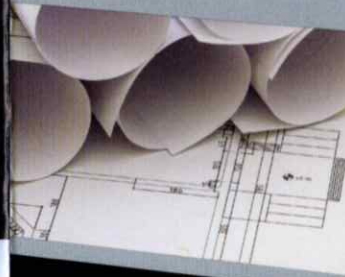
- "Custom Homes*
- "Additions*
- "Renovations*
- "Vacation Homes*
- "Restaurants*
- "Multi-Family Residential*
- "Retail Spaces*



Find me on Facebook
and Houzz



Des Moines Home Renovation & Addition Guide



THE AMERICAN
INSTITUTE
OF ARCHITECTS

EDWARD J SHANNON ARCHITECT PLC
The Neighborhood Architect
Des Moines, Iowa

515 779 9050
www.edwardjshannon.com



We love our old neighborhoods and the houses that fill them!

Yes, these old homes are charming! Yet, in many cases they do not meet the needs of today's families. How does one make them livable for the 21st Century? Adding on & renovating is a huge investment. However, we have all been in homes that do not look, feel or flow right. These are flawed homes and they are expensive to construct too! How does one ensure their renovation dollars are well spent? By working with a seasoned design professional! As a licensed architect, I have been trained in Aesthetics, Space Planning, and Materials & Methods. This ensures your design looks, functions and performs to high standards. As you think about renovating, I offer you FIVE DESIGN PRINCIPLES I typically employ in my designs.

- Elegant Proportions
- Harmonious Rooflines
- Attention to Detail
- Spacious, yet Quaint
- Ease of Flow

ELEGANT PROPORTIONS

Do the parts relate well to each other?

HARMONIOUS ROOFLINES



This family room addition adds a lot of needed square footage, yet blends well with the original house. Can you tell the old from the new?

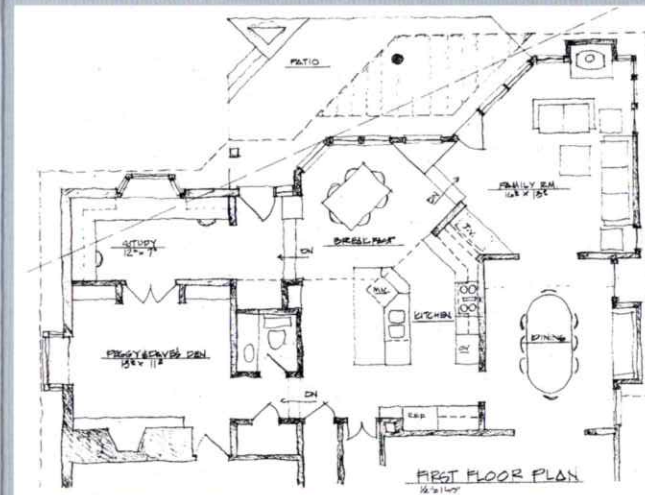
SPACIOUS, YET QUAIN

Your home should feel comfortable for one person as well as many. Great attention to scale will help accomplish this.



EASE OF FLOW

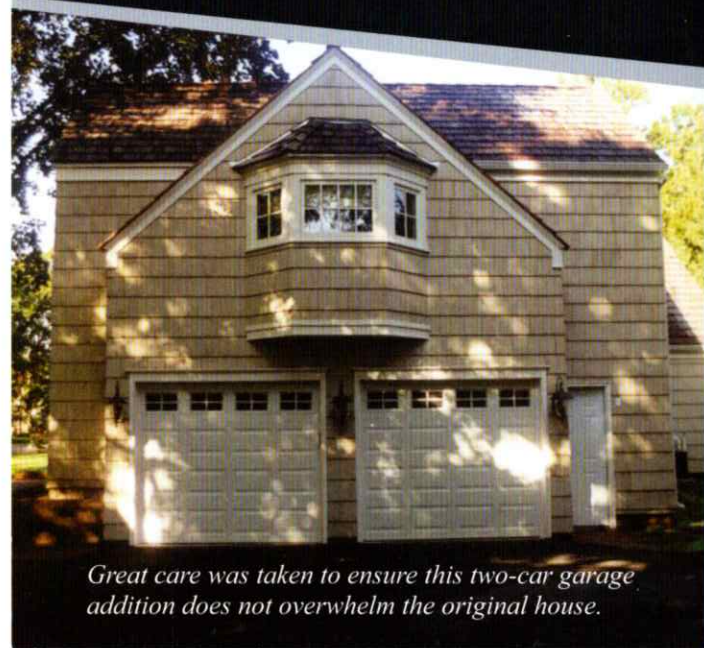
This principle is the most difficult to detect. However, everybody knows when a space doesn't flow right. It may be that the rooms are not the right size; difficult to layout to conversational furniture; poor traffic patterns; rooms with dead-ends. Licensed Architects are trained to avoid these flaws!



The objective of the plan depicted above was to fix many circulation flaws in this house. The owner described it as a "Letter E" with three dead-ends. This renovation transformed it into a "figure 8" that flows seamlessly.

ATTENTION TO DETAIL

Trim boards, dormers, brick gate and chimney all contribute to this homes sense of charm.



Great care was taken to ensure this two-car garage addition does not overwhelm the original house.

