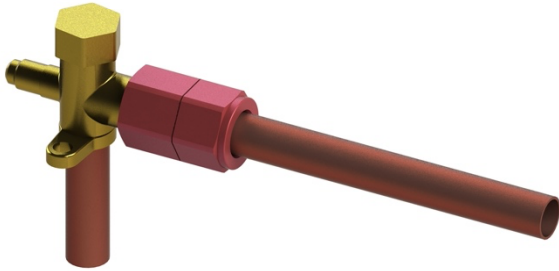




Compatible Wrench Sizes

Each SmartLock fittings have six (6) flat sides. Nut sizes indicated are the total measurement of the three (3) sides where the wrenches sit.

Flare Connector Multi Angle (FCMA)



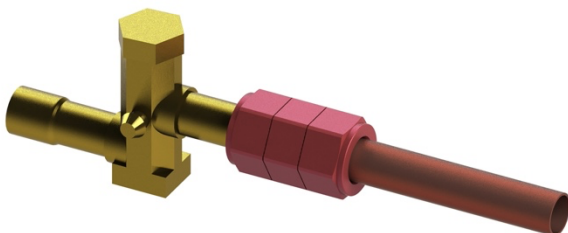
Model No.	Union Nut
FCMA1400	17 mm
FCMA3800	22 mm
FCMA1200	24 mm
FCMA5800	27 mm
FCAM3400	32 mm

Flare Connector Reducer Special (FCRS)



Model No.	Torque Nut	Union Nut
FCRS1238	27 mm	22 mm

Swage Union (SWUN)

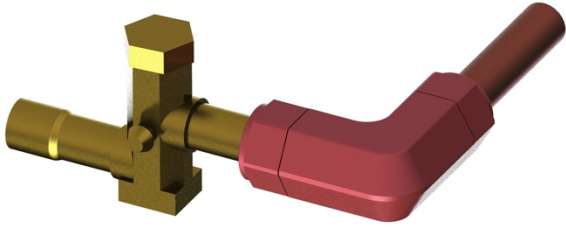


Model No.	Swage Nut	Union Nut
SWUN3800	22 mm	22 mm
SWUN5800	27 mm	27 mm
SWUN3400	32 mm	32 mm
SWUN7800	36 mm	36 mm





Elbow Swage Union (ELSW)



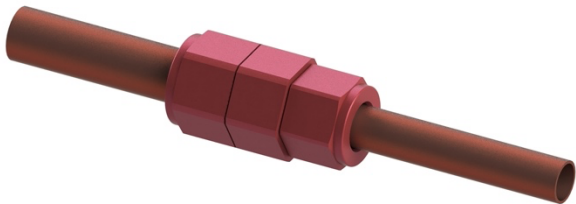
Model No.	Swage Nut	Union Nut
ELSW3800	22 mm	22 mm
ELSW5800	27 mm	27 mm
ELSW3400	32 mm	32 mm
ELSW7800	36 mm	36 mm

Union Straight (UNST)

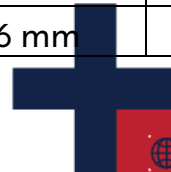


Mode No.	Left Union Nut	Right Union Nut
UNST1400	17 mm	17 mm
UNST3800	22 mm	22 mm
UNST1200	24 mm	24 mm
UNST5800	27 mm	27 mm
UNST3400	32 mm	32 mm
UNST7800	36 mm	36 mm

Union Reducer (UNRD)



Mode No.	Larger Tube Union Nut	Smaller Tube Union Nut
UNRD3814	22 mm	17 mm
UNRD1238	24 mm	22 mm
UNRD5812	27 mm	24 mm
UNRD3458	32 mm	27 mm
UNRD7834	36 mm	32 mm





Elbow Union (ELUN)



Model No.	Swage Nut	Union Nut
ELUN1200	24 mm	24 mm
ELUN5800	27 mm	27 mm
ELUN3400	32 mm	32 mm
ELUN7800	36 mm	36 mm

