



Compatible Wrench Sizes

Each SmartLock fittings have six (6) flat sides.

Nut sizes indicated are the total measurement of the three (3) sides where the wrenches sit.

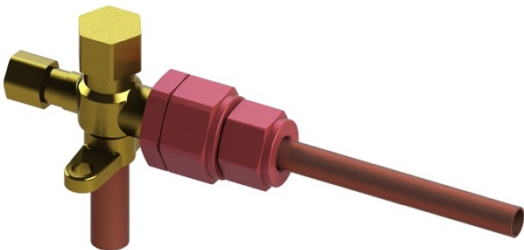
Flare Fittings

Flare Connector Multi Angle



Model No.	Nut Size
FCMA1400	17 mm
FCMA3800	22 mm
FCMA1200	24 mm
FCMA5800	27 mm
FCAM3400	32 mm

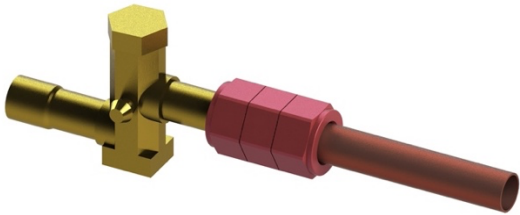
Flare Connector Reducer Special



Model No.	Flare Nut Size	Union Nut Size
FCRS1238	27 mm	22 mm

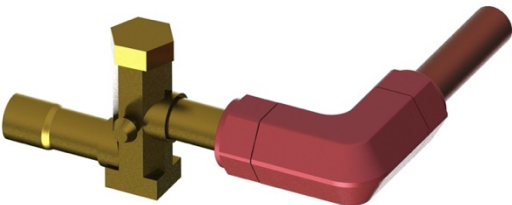
Swage Fittings

Swage Union



Model No.	Swage Nut Size	Union Nut Size
SWUN3800	22 mm	22 mm
SWUN5800	27 mm	27 mm
SWUN3400	32 mm	32 mm
SWUN7800	36 mm	36 mm
SWUN3458	32mm	27mm
SWUN7834	36mm	32mm

Elbow Swage Union



Model No.	Swage Nut Size	Union Nut Size
ELSW3800	22 mm	22 mm
ELSW5800	27 mm	27 mm
ELSW3400	32 mm	32 mm
ELSW7800	36 mm	36 mm

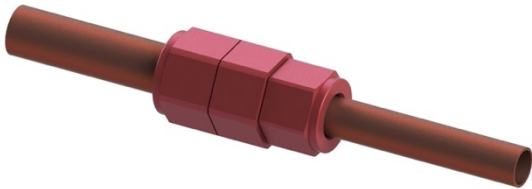
Coupling Fittings

Union Straight



Mode No.	Left Union Nut Size	Right Union Nut Size
UNST1400	17 mm	17 mm
UNST3800	22 mm	22 mm
UNST1200	24 mm	24 mm
UNST5800	27 mm	27 mm
UNST3400	32 mm	32 mm
UNST7800	36 mm	36 mm

Union Reducer



Mode No.	Larger Tube Union Nut Size	Smaller Tube Union Nut Size
UNRD3814	22 mm	17 mm
UNRD1238	24 mm	22 mm
UNRD5812	27 mm	24 mm
UNRD3458	32 mm	27 mm
UNRD7834	36 mm	32 mm

Elbow Union



Model No.	Swage Nut Size	Union Nut Size
ELUN1200	24 mm	24 mm
ELUN5800	27 mm	27 mm
ELUN3400	32 mm	32 mm
ELUN7800	36 mm	36 mm